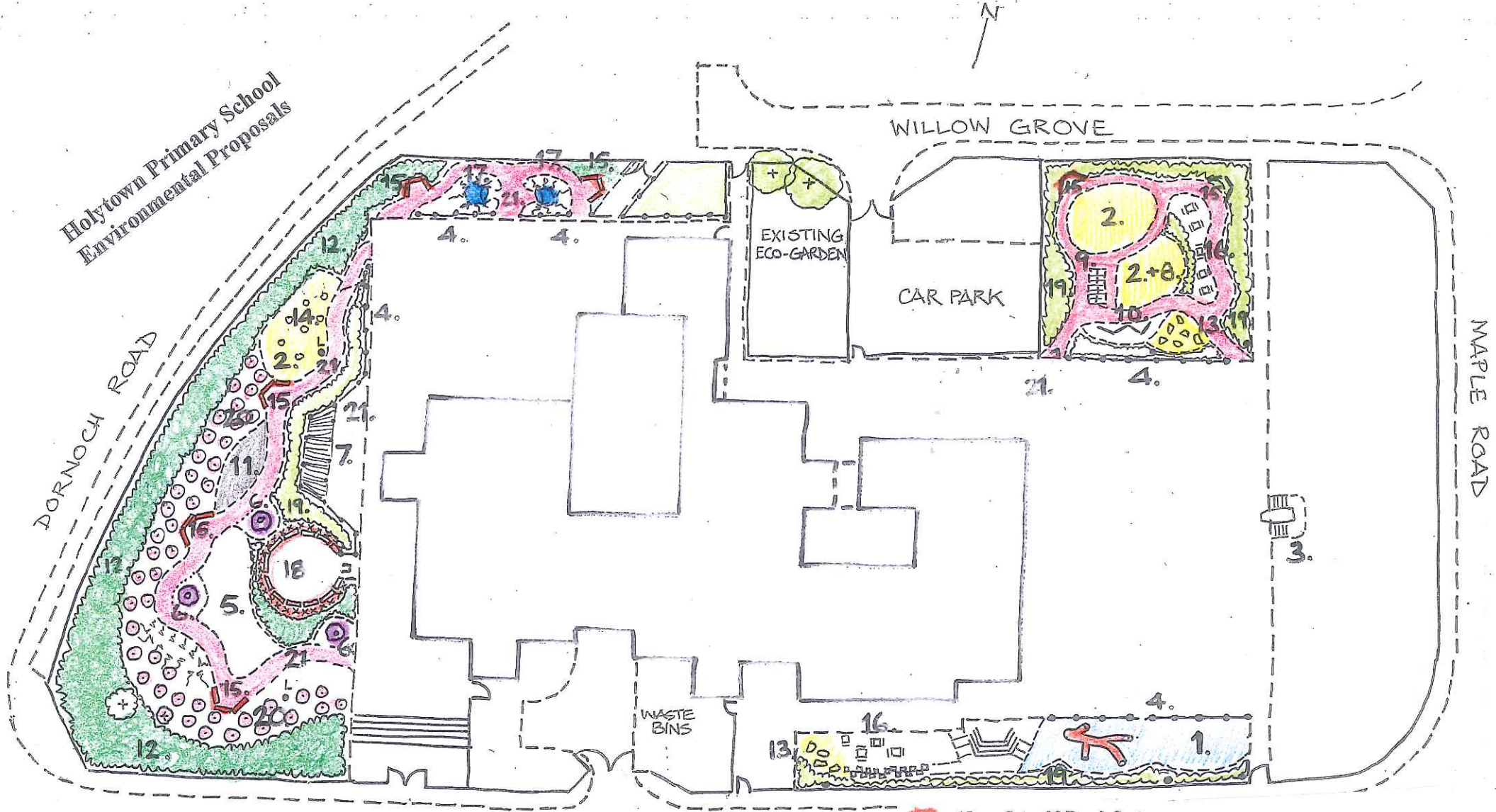


Holytown Primary School
Environmental Proposals



- | | | |
|---|--|--|
| 1. Climbing Frame + Safety Surface | 8. Space for Materials Play | 15. Sets of 3 Bench Seats |
| 2. Sandpit + Timber Edging | 9. Storage for Loose Materials | 16. Existing Picnic Tables and benches in new positions. |
| 3. Chute + Timber Safety Steps | 10. Chalk Board or Art Wall | 17. "Hobbit Houses" - Large Pipes set into earth Mounds |
| 4. Net Fencing on edge of Football Area | 11. Obstacle Course (Timber structure + Ropes and Nets) | 18. Outdoor Learning Area - Circle of Benches (10m.) with Shelter fencing of Woven Willows |
| 5. Balance Beams | 12. Woodland Planting for Wildlife (Native trees and Shrubs) | 19. Shrub planting of Fruit Bushes |
| 6. Tree House with Platform 1.2m high | 13. Rocks set in Sand | 20. Orchard Trees |
| 7. Shed for Shelter from Wind + Benches | 14. Timber Poles for draping Tarpaulins/Sheets | 21. Scaled Gravel Surface Path or Hardstanding |