



Holy Family Primary School

Hope Street, Mossend ML4 1QA Tel: 01698 274967
Email: enquiries-at-holyfamily@northlan.org.uk

January/
February
2025

Dear Parent/Carers,

Welcome to our January/ February 2025 Newsletter.

Many thanks for your efforts in turning the children out so well in our school uniform. We receive many compliments from people visiting the school and from the extended community and a lot of time the support shown in wearing school uniform is mentioned.

As we begin the second half of this academic year, our newsletter contains important messages with regards to the school so please keep your copy safe or know how to access it online from our website. We know life can get busy so being able to refer to the information is handy.

If you have any questions please get in touch through our various communication channels.

Kind regards

Mrs Harley (HT)

Community of Faith

Our P3 and P4 children are beginning preparations to receive First Reconciliation and First Eucharist respectively. Class teachers will plan and deliver the diocesan programme. As with preparing for any Sacrament we use the image of a triangle to show the partnership between home, school and parish. This partnership is essential to fully support each child's understanding on their spiritual journey. Mrs Daisley/ Mrs Cooney and Mrs Stevenson will send home workbooks for families to complete session linked to the learning going on in class. Attending Sunday Mass with your child will allow Father Krzysztof and the parish to support the children working towards receiving their Sacrament.

Jubilee Year 2025– Pilgrim of Hope

We have started to explore with the children what this means. Our focus will be our relationship with God, our relationships with other and our relationship with the environment.

Reporting to Parents/ Carers

This term you will receive a written report detailing your child's progress using the format we used in June 2024. This session Parents' Evening will be 21st May 2025. We have changed the order of reporting processes this session and we welcome any feedback you have.

Christmas Festivities

Many thanks to the extended community who supported our Christmas celebrations. The Christmas Fayre was extremely well attended and gave people a chance to come together as community. As always, your generosity was overwhelming and all funds raised goes Parent Council Fund– which benefits the children. The final total raised was over £1500.

Our choir went out into the community to spread some Christmas cheer. Well done to everyone and the staff who dedicated their time preparing the children so well. We hope to continue with our choir into 2025. New members always welcome.

Residential Experiences

Our P7 children are preparing for their residential experience to Barcaple Outdoor Centre later in the session. Shortly I will send out a Microsoft Form to all families of our P6 children to gather views on a residential experience for their P7 year.

Labelling Reminder- please ensure your child's name is on their belongings so that we can try our best to reunite children with their lost property. Having names on items left helps us to get it back to you promptly. Please remember to add names to winter jackets, hats, scarves and gloves if possible.

Donation

The school has been gifted a very generous donation from a local business. Before Christmas during Thinking Circles the children shared their views on equipment we could purchase for our playgrounds. We are extremely grateful for this very kind donation and very shortly some of the equipment the children suggested will be in the playground.



P.E.

Taking part fully in P.E. is so important for the physical health of our children and their habits in developing healthy lifestyles. We ask you to ensure children have their kits on their designated gym days. Children wear full school uniform every day. They will have time to change for P.E. lessons and should bring their PE kit, a yellow t-shirt and navy or dark shorts or jogging bottoms/leggings. If you do not have a yellow t-shirt then a dark plain t-shirt would be suitable, no football club items please. Jewellery should not be worn on P.E. days.

Water bottles

Please ensure your child has a suitable water bottle with them every day with sufficient supply to last them all through the day. Children are able to refill their bottles. NLC policy is **plain water** to be drunk throughout the day to help with refreshing and rehydrating our brains which improves concentration. I ask for your support on this.



P1 Enrolment—During w.b. 13th Jan 2025 we enrolled children who are aged to start school in August 2025. Please remind any family members, friends or neighbours of this opportunity. Parent/ carers should bring along relevant documentation.

IMPORTANT!!! NUT FREE ZONE!

As with all NLC schools, we are a **Nut Free Zone**. This is to protect staff and children who have **severe allergies**. If they come into contact with or experience airborne triggers they can become extremely ill. Can I ask parents/ carers to continue to carefully check the packaging of snacks and packed lunch items coming into school and refrain from sending anything containing nuts. We want everyone to be safe.



Education Outings

Class teachers are in the process of planning outings for your child's class. We are working hard behind the scenes getting this organised. In addition to class outings, we regularly take children out of the school to access experiences in the community or visit other schools. To ensure we are meeting health and safety guidelines we need to maintain a lower adult: child ratio. We need your help with this. We are looking to gather a list of parents/ carers/ family members who would be available to accompany us on these occasions. If you have sometime and are willing to help us out accompanying various groups/classes of children to get to experiences, please call the school office and share your availability. Thank you in advance.

Communication

Our main source of direct communication is through **Groupcall** which sends emails. Please ensure you regularly check emails to keep up-to-date with school and nursery information. If you have not been receiving regular emails from us please confirm with the office we have an up-to-date email contact as going forward the use of text message will be in emergency situations only.

You may have noticed we have reduced our content on Twitter. After extensive reflection we have decided to move to our school website as a way of sharing information and learning with you. This is a work in progress, and we will send more details soon.



Parent Council : We are very lucky in Holy Family to have such an active and caring Parent Council support the school. If you can spare some time to support our Parent Council please come along to our next meeting on Thursday 20th February at 6.30pm in the Church Hall. Below are the planned dates for meetings for the remainder of the school session. Our current Parent Council is in need of new members to continue the support they offer to our children. Any support you can offer would be more than appreciated.

Day	Date	Time	Location	P7 Hoodies
Thursday	20/02/2025	6.30pm	Church Hall	On behalf of our P7 children, thank you to our Parent Council for gifting their Leavers' hoodies. Parent Council funds cover this cost because of your generosity and support throughout the year with our various fund-raising events.
Thursday	20/03/2025	6.30pm	Church Hall	
Thursday	24/04/2025– TBC	6.30pm	Church Hall	
Thursday	15/05/2025	6.30pm	Church Hall	
Thursday	June 25– TBC	6.30pm	Church Hall	

Parent Portal

Almost all Parents/ Carers are already registered with Parents Portal. This is a one stop shop for all aspects of school life involving Parents and Carers. You can:

- Keep the data we have on file up to date (name, address, emergency contact etc)
- Make payments for lunches/ snacks/ outings etc
- Make appointment for Parent's Evening
- Report absences
- Receive information about the school

We will continue to issue digital copies of report cards through Parent Portal just before the Easter break.

Any problems please accessing contact the school office.

Holy Family Primary and Nursery Class Vision

After consultation with pupils, staff and the wider parents form the below vision statement has been created for our school and nursery.

'Our children are at the heart of our Community'

It is important that our vision and values are shared and central to our school/nursery ethos and culture. This vision encompasses the most important characteristics which were identified through the consultation activities to be recognised and displayed by everyone involved with our establishment. You will note Community with a capital 'C'. This makes the word a proper noun as we refer to the extended community of the establishment. If you have any thoughts or feedback to share please get in touch.

Child Protection and Safeguarding: All staff in Holy Family engaged in refreshed Child Protection and Safeguarding training during the In-set days in August and have regular updates throughout the year. I am the Child Protection Co-ordinator for the school and nursery. If you have any concerns for a child please contact me on 01698 274967 or enquiries-at-holyfamily@northlan.org.uk. It is the job of everyone to keep all children safe.

Once a Week Take a Peek:

Head lice and nits are very common in young children and their families. They do not have anything to do with dirty hair and are picked up by head-to-head contact. Weekly, check your child's hair and seek advice from a local pharmacy if you need to treat this childhood issue.

Partnership with Mossend Primary - Our strong partnership with Mossend continues this session. Mrs Preston is taking the lead, liaising with a class teacher from Mossend to plan and organise events for each stage to be involved in. So far, the children seem to be enjoying the opportunities to meet up and work with friends and build new bonds.

Drop-off: There has been a **notable increase** in the number of cars stopping on the yellow zig-zag lines to allow children out of cars. This creates a number of safety issues. The children are running in front or behind cars while other vehicles are moving in the area at the front of the school. The stopped cars are also interrupting the flow of traffic. Please be considerate and ensure you arrive at school in enough time for a safe drop-off.

Attendance and Late-coming Update

We continue to focus on increased attendance at school. Below is an overview of our average attendance figures for the first half of the year. We are progressing well towards consistently achieving the NLC suggested average of 95% which will benefit the children in making progress. Keep up the great efforts!!

August 2024- 97% September 2024- 95% October- 93% November- 94% December- 87%

I continue to include this illustration summary to show the number of days/weeks lost against attendance percentages as a gentle reminder. Holidays taken during school time are not permitted and should be avoided at all costs. Holidays will not be authorised unless in very exceptional circumstances and approved after discussions with myself. We experienced a high level of illness during December so hopefully everyone has recovered and ready for this term. We have a great number of children smashing the 95% and above target which is brilliant. Every day at school counts.

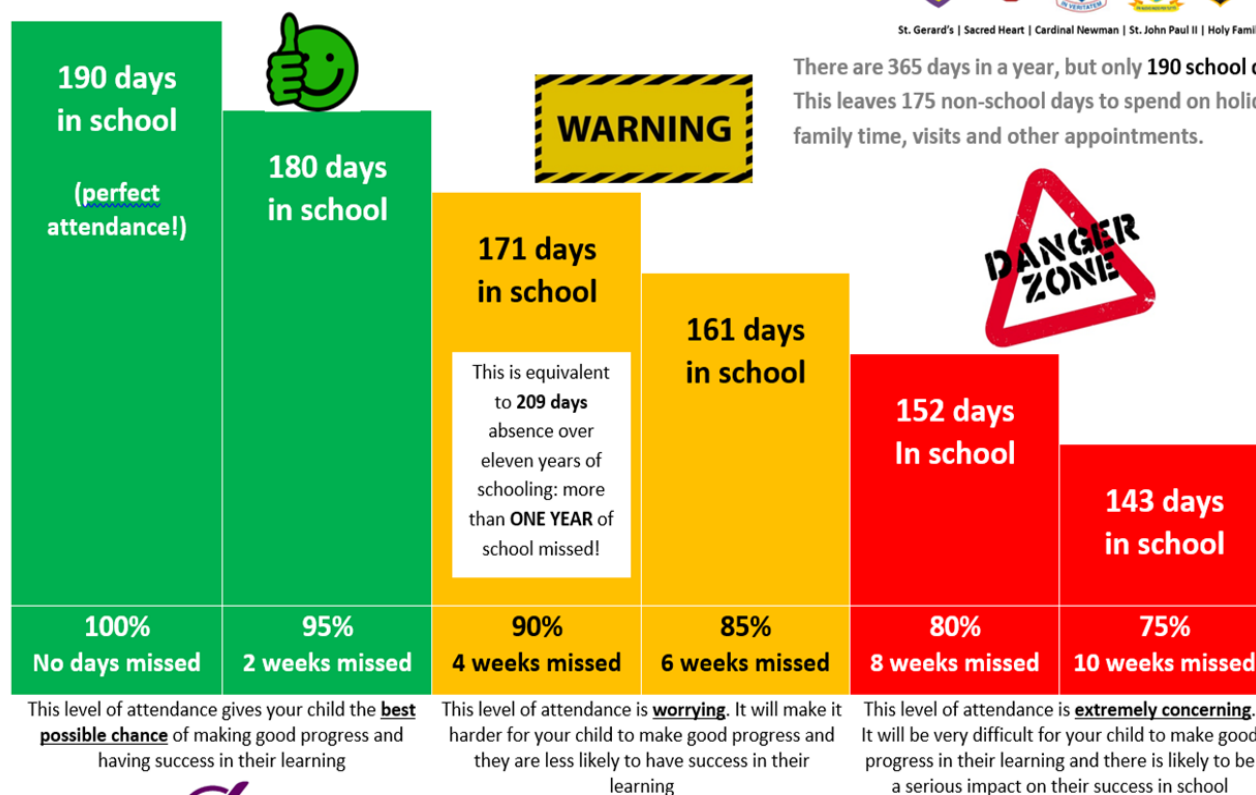
Late-coming can also be very disruptive and stressful for children. We understand from time-to-time situations arise and I would ask you share information with us to help our understanding but as a rule I expect all children to be in the yard for the bell ringing. Persistent late-coming is a concern and we will support families in anyway we can.

Understanding your child's attendance percentage

CARDINAL NEWMAN CLUSTER OF SCHOOLS



St. Gerard's | Sacred Heart | Cardinal Newman | St. John Paul II | Holy Family



ATTENDANCE MATTERS... every school day counts!

Staffing

Mrs Speirs has officially returned from Mat Leave and has settled back into school life well. Mrs Rooney and Mrs Cook continue to support children across the school delivering various strategies and interventions. Mrs Nixon has been in school keeping in touch over recent months.

Mrs LeBlond intends to retire at the end of this academic year. She has held the post of Principal Teacher in Holy Family for a number of years and is a much-loved and fundamental member of our team and Parish. I am sure the whole community will join to support her during the final few months of her working career.

Clubs

Class teachers are planning a range of after school opportunities for this term. At the moment plans are in place for netball, Dancemania (Friday afternoons) and a Family Arts and Craft Club. Emails will be sent to families of the relevant stages the opportunities target. A number of children are keen to lead lunchtime clubs. Rehearsals for our school show will begin shortly.

Holy Family Primary School

Hope Street, Mossend ML4 1QA Tel: 01698 274967
Email: enquiries-at-holyfamily@northlan.org.uk



**Dates for your Diary
2024-25**

January 2025

Monday 27th – Flu Immunisation catch-up

February 2024

Wednesday 5th – Global Play Day

Friday 7th – First Friday Mass and Coffee Morning.

Tuesday 11th – Session 2 Nil by Mouth, Holy Family hosting Mossend P7's

Mon 17th, Tues 18th Feb – Holiday.

Wednesday 19th In-service Day – School and Nursery closed to pupils.

Thursday 20th – Parent Council.

March 2025

Wednesday 5th – Ash Wednesday

The School Year 2024-25

Please use the link below to familiarise yourself with school holidays for this session and next.

[School holidays and term dates | North Lanarkshire Council](#)

Reading Books

If anyone has come across books belonging to the school which have mistakenly not been handed back, please return them. Replacing reading books year-on-year is a huge expense so if we can gather as many back it would help our finances. No questions will be asked even if the book has been at home for a number of years. Thank you for your support with this.



Homework

Class teachers issue homework weekly. Generally, homework should not take any longer than 20 mins, Monday-Thursday. P3/2-7 have their tasks published on the school website. P1 and P2/1, class teachers will send materials home in school bags. Any issues please speak to your child's teacher. Homework reinforces what your child has been learning in class and helps support the progress your child makes at school. Thank you to all our families who have gone to great efforts to support this.

