



# Holy Family Primary School

Hope Street, Mossend ML4 1QA Tel: 01698 274967  
Email: [enquiries-at-holyfamily@northlan.org.uk](mailto:enquiries-at-holyfamily@northlan.org.uk)

March 2025

Dear Parent/Carers,

Welcome to our March 2025 Newsletter.

As the brighter mornings and lighter nights are coming in, we would like to share this shorter than normal newsletter. This month the newsletter is deliberately shorter to share a few key messages.

Kind regards  
Mrs Harley (HT)

## Community of Faith

Our P3 and P4 children are preparing well to receive their respective sacraments. A huge thank you to the families and staff who are supporting the preparation of the children also to the parish for their continued support.

### Lent

During the season of Lent we are tasked to focus on Prayer, Fasting and Almsgiving. As well as our usual focus on prayer in class and during whole school assemblies, Father Krzysztof has invited the children to attend additional masses throughout Lent with the parish community. Please see the schedule below. Each week during Lent, our P7 children are planning a number of fun activities for children to get involved in and raise money for a number of charities. The Holy Family community is always very kind in giving to others. We will also be talking to the children about fasting. While our children are too young to fast from food, we are pointing them in the direction of other means of fasting i.e. screen, games etc. We also highlight how they could spend the time they have while fasting showing thanks to God for all they have which is good.

Date	Time	Stage	Event
5/3/2025	9.30am	Whole school	Ash Wednesday Mass
6/3/2025	11am	P6	Confession in Church
	1.30pm	P7	Confession in Church
10/3/2025	11am	P5	Confession in Church
	1.30pm	P4/5	Confession in Church
12/3/2025	9.30am	P7 and P6	Lenten Mass with Parish
14/3/2025	9.30am	Whole school	Mass with Holy Family Parish to mark the beginning of 40 hours adoration. Short video sharing the life of Blessed Carlo Acutis
17/3/2025	9.30am	Whole school	Mass for the feast of St Patrick with Parish
	All day	P3	First Reconciliation retreat
18/3/2025	All day	P4	First Communion retreat including mass at 12 noon with Parish
19/3/2025	9.30am	P2/3	Lenten Mass with Parish
21/3/2025	9.30am	P1 and P2/1	Lenten Mass with Parish
26/3/2025	9.30am	P7 and P6	Lenten Mass with Parish
28/3/2025	9.30am	P5 and P4/5	Lenten Mass with Parish
31/3/2025	All day	Whole school- times TBC	PFFA children leading Stations of the Cross Group 1- P7, P1 and P2/1 Group 2- P6 and P2/3 Group 3- P4/5 and P5
2/4/2025	9.30am	P2/3	Lenten Mass with Parish
4/4/2025	9.30am	Whole school	First Friday Mass

## Science Week:

Classes are looking forward to parents/ carers joining us on **Tuesday 11th March at 2pm** when the children will showcase their learning. Our doors will open at 1.55pm and the captains will be on hand to escort you to the correct class. Science Week 2025 focuses on the theme of 'Change and Adapt'. Throughout the week of 10-14<sup>th</sup> March staff will be planning learning around this theme. By the nature of science learning and some classes having higher numbers of children, this restricts space therefore we are asking for **1 adult per child**. If you are visiting more than one child, please feel free to move about the classes as you need. We will ring a bell at 2.45pm to indicate the end of the session and allow us time to tidy up before dismissal. There will be a digital evaluation available as you leave. We would really appreciate your feedback as this will also allow us to plan for future events.



## Catering– Cashless System

For a number of years now NLC have operated a cashless system to pay for school meals. Families can add funds to their child's 'iPayimpact' account to cover the cost of school meals for P6 and 7 pupils who are NOT in receipt of Free School Meals, items from our tuck shop and Breakfast Club. Until now, the catering staff have kindly been accepting cash payments and adding them to the child's account but this is no longer sustainable. If you have not already done so, please access your child's iPayimpact account if you need to pay for school meals/ Breakfast Club or tuck shop items. As of 31st March the catering staff will NOT be accepting any cash. Parents/carers will need to add funds to the iPayimpact accounts before then. If needed, come into school and we will support parents/ carers to access their 'iPayimpact' accounts through 'Parent Portal' or other NLC avenues. The Parent Portal system is where you access your child's reports.

## Library Visits

We have arranged for most classes to visit the library at Bellshill Cultural Centre. Children will walk to and from this community resource, spend some time with the library staff and if they have a card which does not have any outstanding books on loan, they can borrow a book to bring home. If your child doesn't have a library card, you can apply for one- see link below for advice. We will be looking for helpers to support us on these outings.

[Join the Library - North Lanarkshire Council](#)

24th March @9.15am– P2/1

28th April @ 9.15am– P1

31st March @9.15am– p3/2

P5 and P6 dates TBC (after Easter)

11th March @ 1pm– P4/5

18th March @ 1pm– P7

## Attendance Update

Our focus and efforts to improve attendance at school is showing a very positive picture. Every day at school is so valuable helping children to achieve all they can. Keep up the great work Holy Family!!!

Average Monthly Attendance		
Month	Percentage 23-24	Percentage 24-25
August	96%	97%
September	95%	95%
October	95%	93%
November	94%	93%
December	89%	87%
January	93%	95%
February	90%	95%

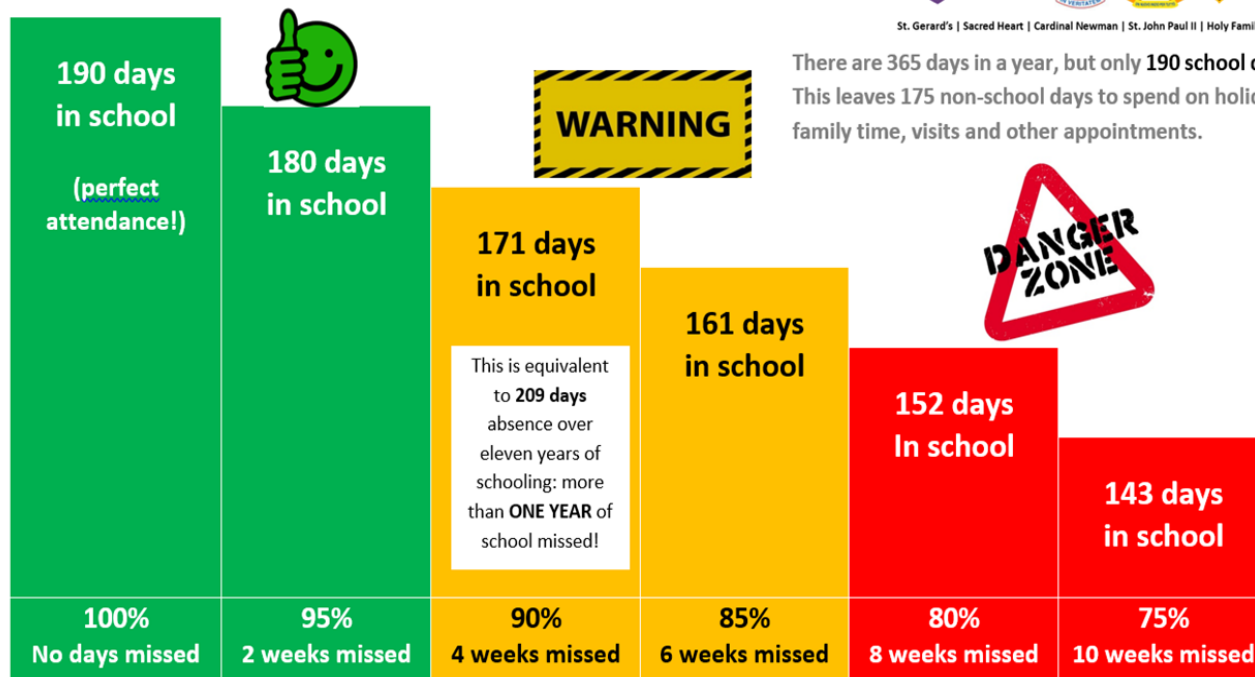
Average Monthly Attendance by Stage		
Stage	August 2024	Feb 2025
P1	99.5%	97.2%
P2	95.3%	92.5%
P3	95.9%	92.1%
P4	96.6%	96.2%
P5	99.2%	96.1%
P6	96.9%	96.3%
P7	95.2%	94.4%

## Understanding your child's attendance percentage

CARDINAL NEWMAN CLUSTER OF SCHOOLS



St. Gerard's | Sacred Heart | Cardinal Newman | St. John Paul II | Holy Family



There are 365 days in a year, but only 190 school days. This leaves 175 non-school days to spend on holidays, family time, visits and other appointments.

This level of attendance gives your child the **best possible chance** of making good progress and having success in their learning

This level of attendance is **worrying**. It will make it harder for your child to make good progress and they are less likely to have success in their learning

This level of attendance is **extremely concerning**. It will be very difficult for your child to make good progress in their learning and there is likely to be a serious impact on their success in school



**ATTENDANCE MATTERS... every school day counts!**

## Lenten Charities– send on behalf of P7

P7 are planning a whole host of fun activities for children to take part in and raise some money for charities during the season of Lent. Please note due to our busy schedule in P7's some activities are on a Friday and others a Thursday.

Day/ Date	Activity	Suggested Donation
<b>FRIDAY</b> 7 <sup>th</sup> March	Dress Down Day	£1 per child max £3 per family
Thursday 13 <sup>th</sup> March	Science Activity Session	£1 per child max £3 per family
Thursday 20 <sup>th</sup> March	Sweet Treat Day	1 packet of shop bought cakes or treats 50p per child to buy treats
Thursday 27 <sup>th</sup> March	Thrilling Thursday- games, assault course and much more	£1 max £3 per family
<b>FRIDAY</b> 4 <sup>th</sup> April	Dress Down Day H Factor	£1 max £3 per family

## Child Protection and Safeguarding:

All staff in Holy Family engaged in refreshed Child Protection and Safeguarding training during the In-set days in August and in February. I am the Child Protection Co-ordinator for the school and nursery. If you have any concerns for a child, please contact me on 01698 274967 or enquiries-at-holyfamily@northlan.org.uk. It is the job of everyone to keep all children safe.

## Recycle and Re-use

A few parents/ carers have been asking if we continue to accept uniform which children may have grown out of. Yes, we do and are happy to accept items which can be recycled throughout the year. In our Jungle Room we have a stock of uniform for parents/ carers to access as they need.