

HILLTOP

Important School Information August 2024-2025





HILLTOP



Vision

We are a nurturing and inclusive school community, where all learners are inspired to have the confidence, motivation and support to be the best they can be.



HILLTOP



Values

We want everyone to be a Hilltop 'HERO'.

To be...

- Happy
- Empowered
- Respected
- Outstanding

Happy
Empowered
Respected
Outstanding



HILLTOP



Aims

- Provide a safe, happy and nurturing environment, where diversity is celebrated and all pupils can thrive.
- Create an environment where learners, staff and members of the wider school community feel included, respected and valued.
- Foster a responsible attitude in our learners to encourage them to be curious, make choices and be leaders of their own learning.
- Provide creative, stimulating learning experiences to develop the skills for learning, life and work.

SCHOOL MEALS

Menus available online

All P1-P5 children
receive a free
breakfast club &
school meal



[Primary school menu | North Lanarkshire Council](#)

JOIN US



Free & open everyday from
8.15am - 8.45am

Free School Meals and Clothing Grants



Do you qualify?

If you are in receipt of:

- Housing Benefit
- Council Tax Rebate
- Income Support
- Jobseekers Allowance (Income Based)
- ESA (Income Based)
- Child Tax Credit (Income below £16,105) with no element of Working Tax Credit
- Maximum Child & Working Tax Credit (Income below £6,420)
- Support Under part V1 of the Immigration & Asylum Act (1999)
- Universal Credit (Maximum monthly income of £610)

Application forms are available from First Stop Shops, Schools or online at www.northlanarkshire.gov.uk/freeschoolmeals

If you think you qualify, complete a form making sure the benefit received is clearly identified and relevant documents enclosed. No documents are required if you are in receipt of Housing /Council Tax Benefit

Submit your application form to any First Stop Shop now to allow processing for the new term in August.

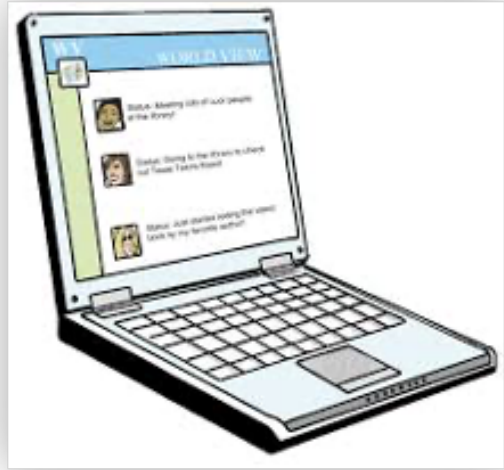
Apply Now!

How do I find out more

North Lanarkshire's website



<https://www.northlanarkshire.gov.uk/schools-and-learning/school-meals/free-school-meals-and-clothing-grants>



HILLTOP



How will we share information with you



- We need the latest phone numbers and email address.
- We will use email for almost all individual, class and school messages.



The School App is also a great way to get the most up to date information .



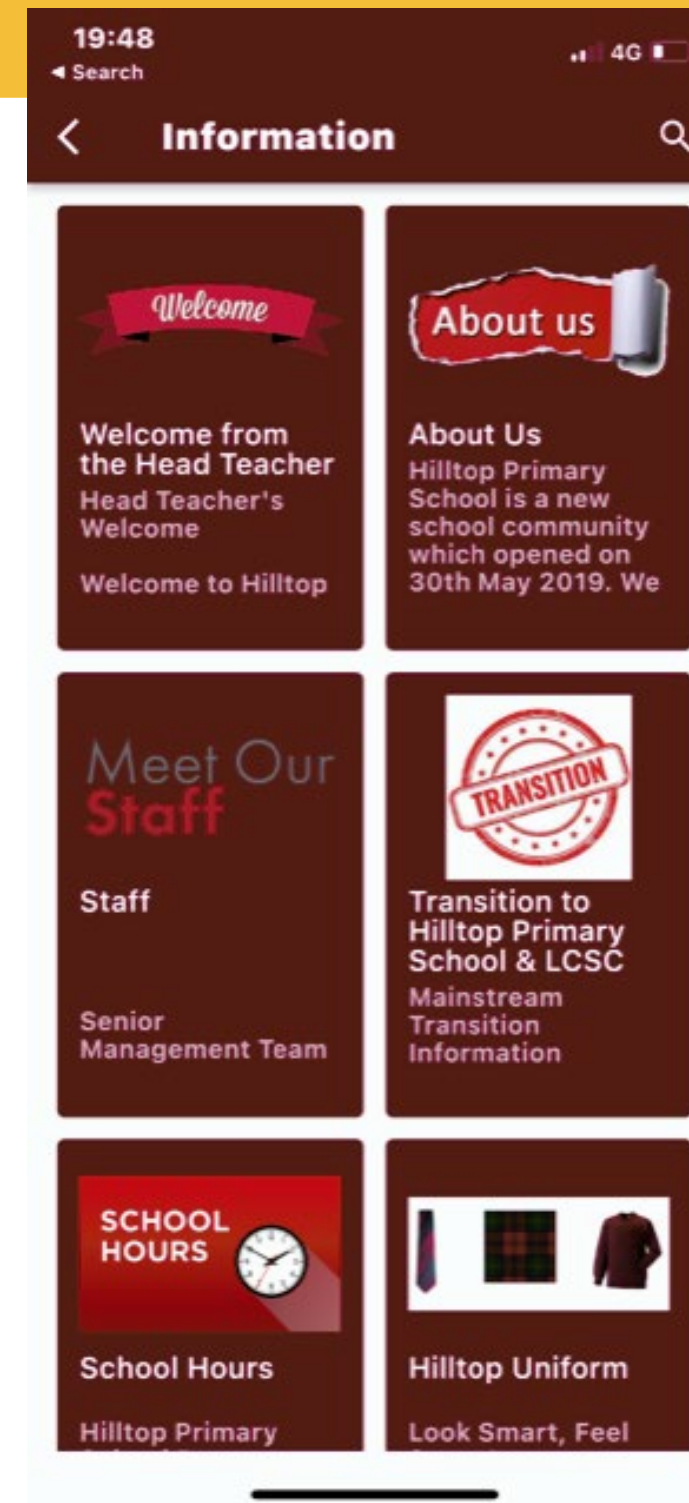
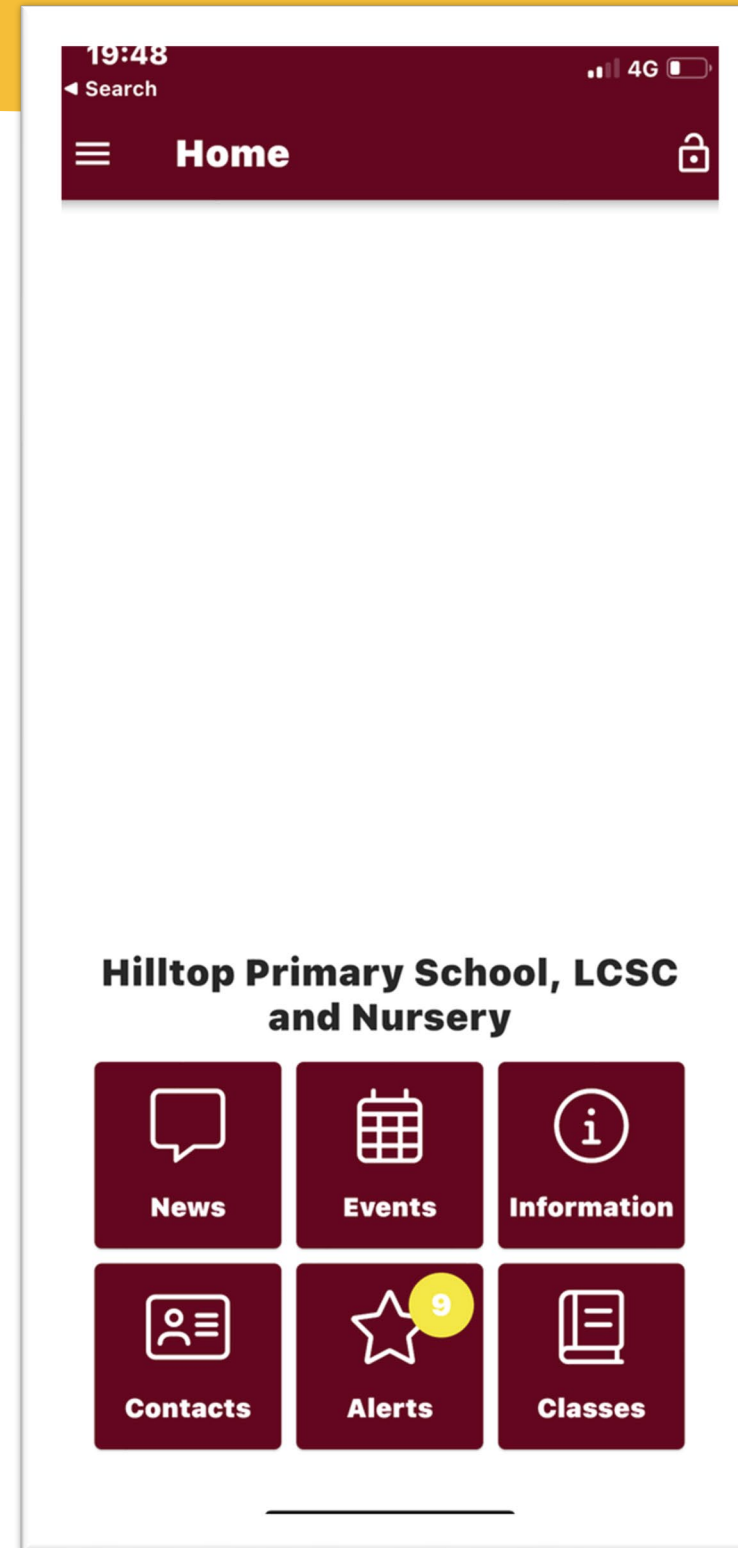
Regular digital newsletters

How can I get the School App ?



Download the free ScotEd App on Android or Apple phones

Select Hilltop PS from the dropdown menu.





HILLTOP



How can I find out what is happening



hilltop School & Nursery



Check out our X accounts!



[@PrimaryHilltop](https://twitter.com/PrimaryHilltop)

[@AirdrieHilltop](https://twitter.com/AirdrieHilltop)





North Lanarkshire Council School holidays Dates 2024/2025



August 2024

- Monday 12 August 2024 (Return date for Teachers & In -Service Day)
- Tuesday 13 August 2024 (In -Service Day)
- Wednesday 14 August 2024 (Return date for Pupils)

September 2024

- Friday 27 September and Monday 30 September 2024 (September weekend)

October 2024

- Monday 14 to Friday 18 October 2024 (October Week)

November 2024

- Monday 18 November 2024 (In -Service Day)

December 2024 - January 2025

- Schools close at 2.30pm on Friday 20 December 2024
- Monday 23 December 2024 - Friday 3 January 2025 (inclusive) (Christmas holidays) Schools return on Monday, 6 January 2025

February 2025

- Monday 17 February and Tuesday 18 February 2025 (Mid -term break)
- Wednesday 19 February 2025 (In -service day)

April 2025

- Schools close at 2.30 pm on Friday 4 April 2025
- Monday 7 April - Friday 18 April 2025 (Inclusive)* Spring Holiday (Easter)
- *Good Friday 18 April and Easter Monday 21 April 2025

May 2025

- Monday 5 May 2025 (May Public Holiday)
- Tuesday 6 May 2025 (in-service day)
- Friday 23 May 2025 and Monday 26 May 2025 (May Weekend)

June 2025

- Schools Close at 1pm on Wednesday 25 June 2025

The School management team



Mrs Elspeth Roddick
Depute Headteacher



Mrs Tina Donnelly
Headteacher



Miss Laura McGhee
Depute Headteacher



Mrs Lynn Sidlo
Principal Teacher



Miss A Sangster
Principal Teacher



Hilltop Staff team



P1A
Mrs Elliott



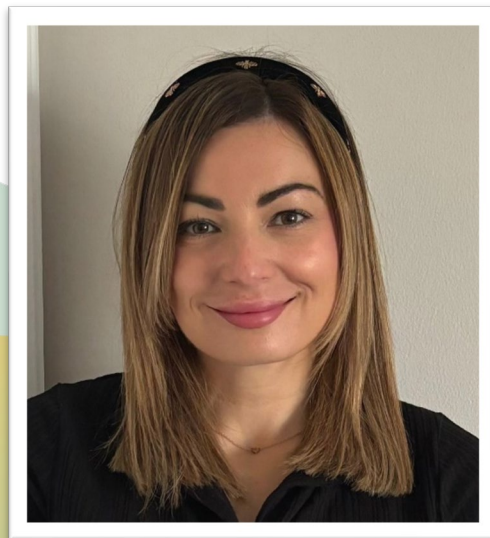
P1B
Mrs Grier



P2A
Mrs Craig



P2B
Dr Striker & Miss Sangster



P3A
Mrs Scott & Mrs Sidlo



P3B
Miss Hannah



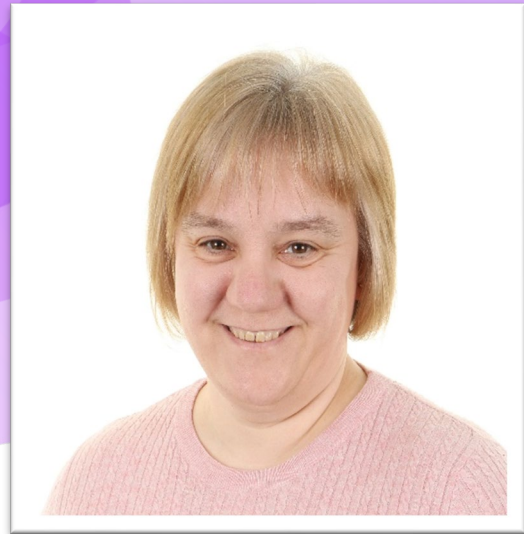
P4A
Mrs Armstrong



P4B
Miss McLaughlin

Hilltop Staff team

Hilltop Primary Office Staff



Mrs Boyd



Mrs Addison



Mrs Stangoe



Breakfast Club & Lunchtime Supervision



Diane Robertson



Mary Gracie

School Support Staff



Mrs Montgomery



Mrs Gribben



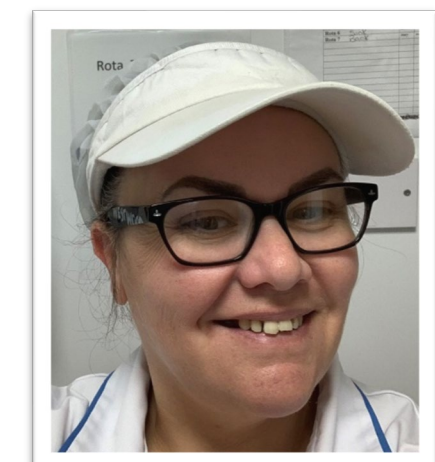
Mrs Shing

Facilities Support



Mr Kearney

Catering Manager



Mrs Kelly

Hilltop Staff team



P5A
Miss Allardice



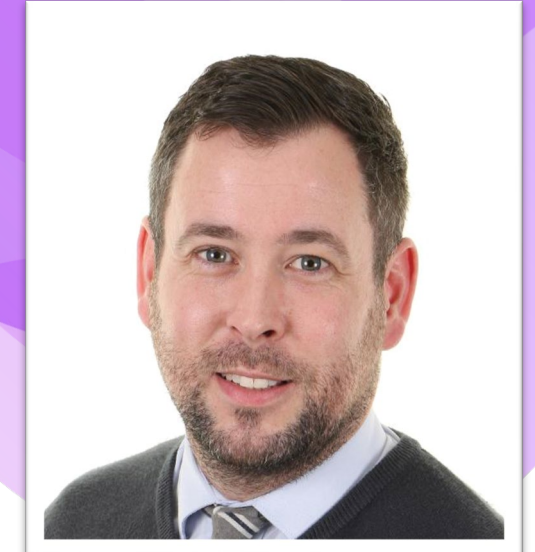
P5B
Miss Brown



P5C
Mrs Slowman



P6A
Mrs Steele



P6B
Mr Daye



P7A
Mrs Drummond



P7B
Mr McIvor



Non Class Contact Teachers



Mrs Hendrie



Mrs Reid



Miss Waugh



Hilltop LCSC Staff team

Depute Headteacher
Miss Laura McGhee



Ness

Mrs McGuinness & Mrs Nicholls



Leven

Mrs Strickland



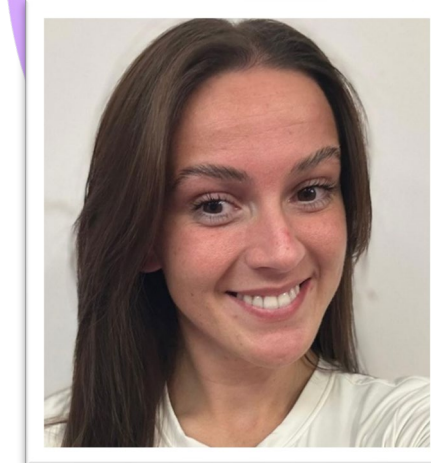
Calder

Miss Kennedy



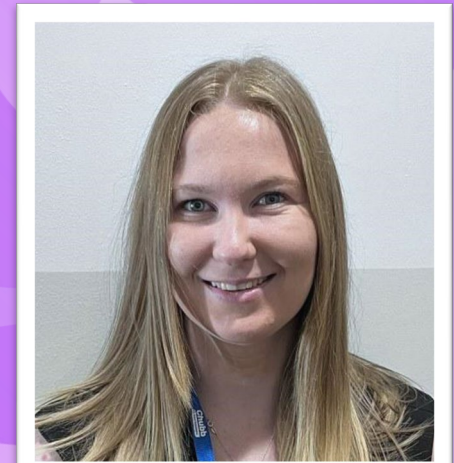
Nairn

Mrs Ho



Carron

Miss Jackson



Dee

Miss McMahon



Spey

Mr Hendrie



Spey

Mrs Innes



Forth

Miss Whitelaw



Clyde

Miss Kane



Tay

Miss McFadyen



NCCT

Mrs Bah



Tweed

Mrs Irwin

Hilltop LSCS Staff Team



Pamela Jones



Mary Brown



Mattie Stewart



Sandra Campbell



Debbie Hilferty



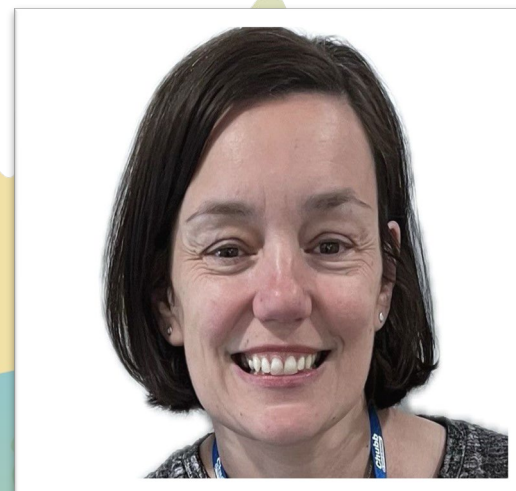
Teresa Gallagher



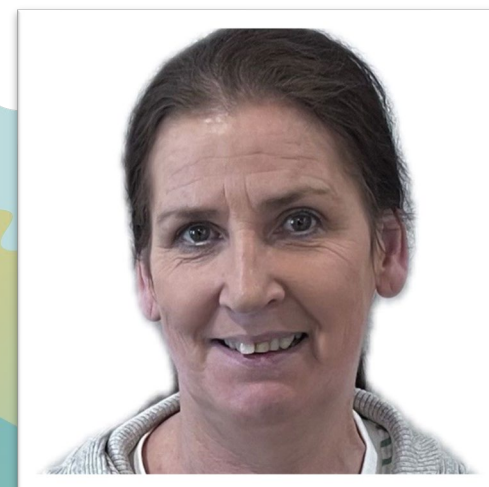
Gemma Watson



Karen Hayward



Kirsten Crielly



Caragh
MacDonald



Magdalena
Grubinska



Nicola Rea

Support for families



Contact him on 01236 632240
enquiries-at-hilltop@northlan.org.uk

Fraser Hamilton
Family Support Worker

Hilltop Parent Council



Calendar of meetings for next session will be emailed shortly.

Why not come along to the
AGM at the school on Wednesday
28th August 6pm



@Hilltop_PC

[https://www.facebook.com/
Hilltop.PC/](https://www.facebook.com/Hilltop.PC/)



Physical Education

Indoor and Outdoor PE sessions

- Children need to bring a pair of plimsoles or trainers for indoor gym sessions. **Crocs are not suitable footwear for PE.**
- White top and black shorts or joggers.
- Waterproof jacket

PE days will be confirmed in August when we return for the new term.

Attendance at school

Attendance is expected to stay above 95%

If your child is unwell, please contact the school by calling as soon as you can in the morning.

In line with Child Protection guidance, if a child does not arrive at school as expected and we have no explanation, the school is required to text the parent to make them aware and ask them to contact us.

Getting to school on time

The school day begins

8.55am start for the LCSC & P1 & P3

9am start for Primary 2, 4, 5, 6 & 7

The school day ends

2.55pm for P1 & P3 & LCSC pupils

3pm for P2, P4, P5, P6 & P7

MISS SCHOOL MISS OUT

NORTH LANARKSHIRE

Did you know...?

- There are **190 days** in each school year
- That means there are **175 non school days** for holidays, haircuts and appointments!
- 90%** attendance may sound good but = **19 days missed** each year
- 2 school days** missed each month during your school life adds up to **1 whole year** of school lost
- 15 mins** late every day = **2 weeks** of lost learning each year.
- In Primary School there are **25 hours** of learning each week. **4 weeks** missed = **100 hours** of learning missed.
- Some Children and Teens find it hard to come to school. Tell the school as soon as you can if there is a problem.
- Don't worry.. You are not on your own, we are here to help and to work with you and your family.
- Working Together we can do it and make sure your child does not **MISS OUT**

LEARN HERE

...making sure your child is at school and ready to learn, before the school bell rings!

Did you know? - being 15 minutes **late** each day is the same as missing **two weeks** of school!*



**Lost minutes =
Lost learning!**



Getting to school on t



Persistent latecoming could amount to several days of lost schooling across the year!

School Uniform

- Black trousers or skirt
- White shirt or polo top
- Black or burgundy jumper, sweatshirt, cardigan or hoodie.
- Tartan pinafore or skirt is not essential.



Please remember you can purchase iron on badges for nursery and school from our school office.



School Uniform

Please see below the range of uniform items available from Scotcrest, our main uniform supplier.



**School Uniform
Amnesty.**



**school uniform
donations welcome
here.**

Help us, Help you.



Airdrie Uniform Bank

Please hand into the school office any preloved uniform items your child may have outgrown.

Anything we cannot use or donate will be given to the Airdrie Uniform bank to benefit other families.

Thank you for your help and consideration.



PLEASE

LABEL EVERYTHING



HILLTOP



Important information

Please note that no adults are permitted in the playground areas unless you are an escort or parent of a child in the LCSC.

There is strictly no smoking or vaping permitted in the school grounds.

Strictly no dogs are permitted in the school grounds.

We are a Nut Free School





HILLTOP

Travelling to school

Please encourage your child to walk to school if possible.

Your child can bring a bike or scooter to school and leave it in the bike storage areas during the day.

Please be a considerate driver. Do not park or wait in the drop off zones and use only the designated parking bays provided.



HILLTOP



what is the best way to get in touch with us

Email us...
enquiries-at-hilltop@northlan.org.uk

Visit the app...

Call us...
01236 630240

Visit the website...
<https://blogs.glowscotland.org.uk/nl/hilltopps/>

Remember that we are always here to help and support you

Please get in touch if you need any guidance

The school App and Website contain all of our "how-to" guides for Digital Learning. Please take a look.

