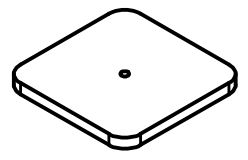
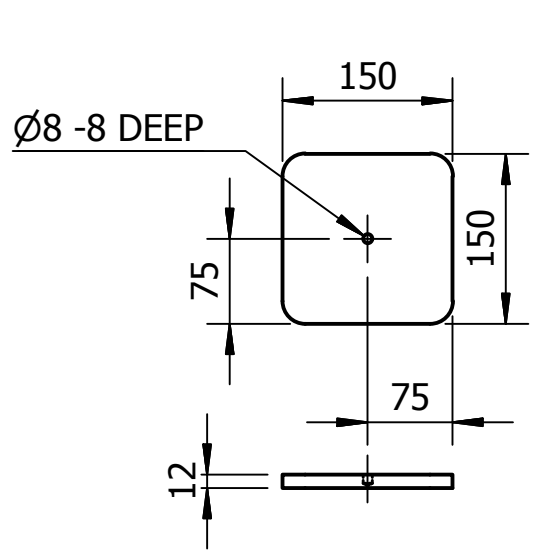
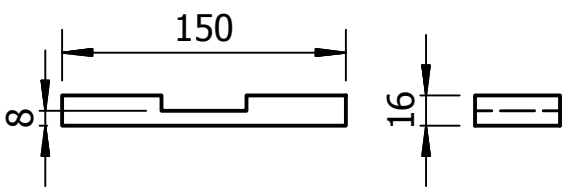
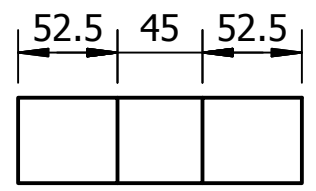
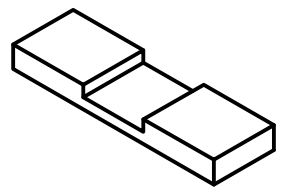
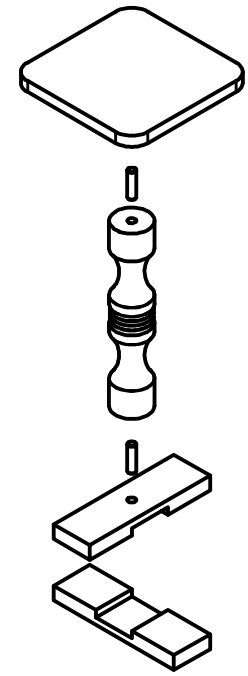
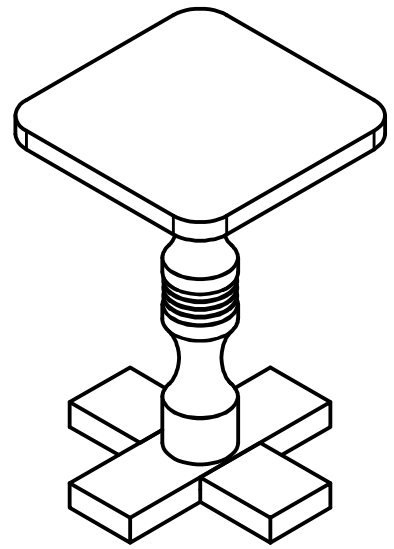
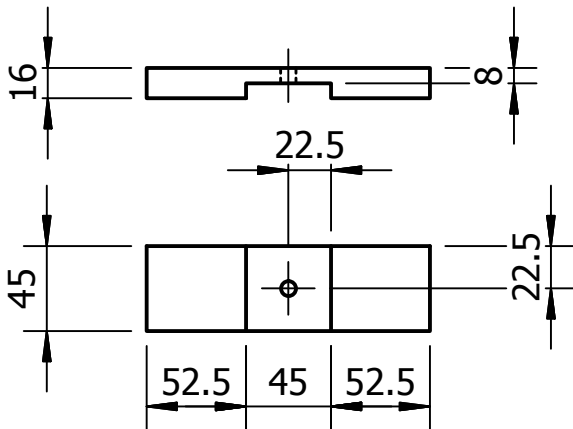
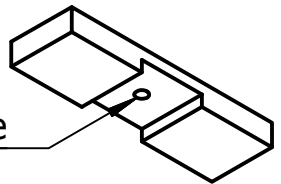
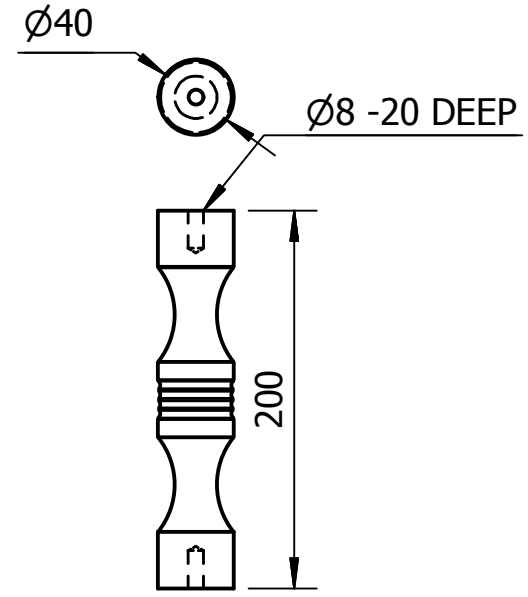


Ø8mm - Through hole



The blank is prepared for turning between centres on the woodwork lathe.  
 Reduce the blank to a uniform 40 mm diameter prior to shaping.  
 A turnery template should be used for assessment purposes, if required.  
 Use of woodwork lathe (between centres) to a given diameter to ±1mm (N5) or ±2mm (N4)



# Practical Woodworking Trophy Stand

## N4: Operation Tolerance

- Marking out 2mm
- Planing or similar 2mm
- Constructing - joint gaps not to exceed 2mm
- Flat-frame - overall sizes within 5mm

## N5: Operation Tolerance

- Marking out 1mm
- Planing or similar 1mm
- Constructing - joint gaps not to exceed 1mm
- Flat-frame - overall sizes within 3mm