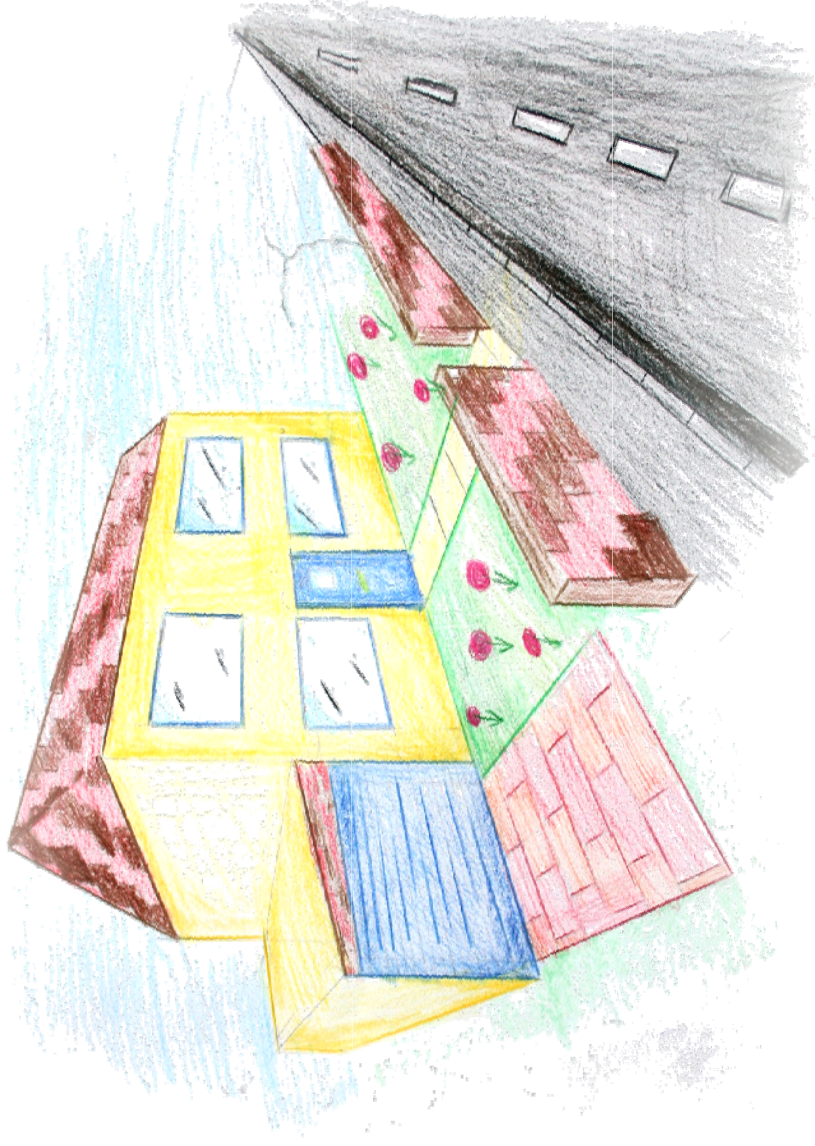




Greenfaulds High School

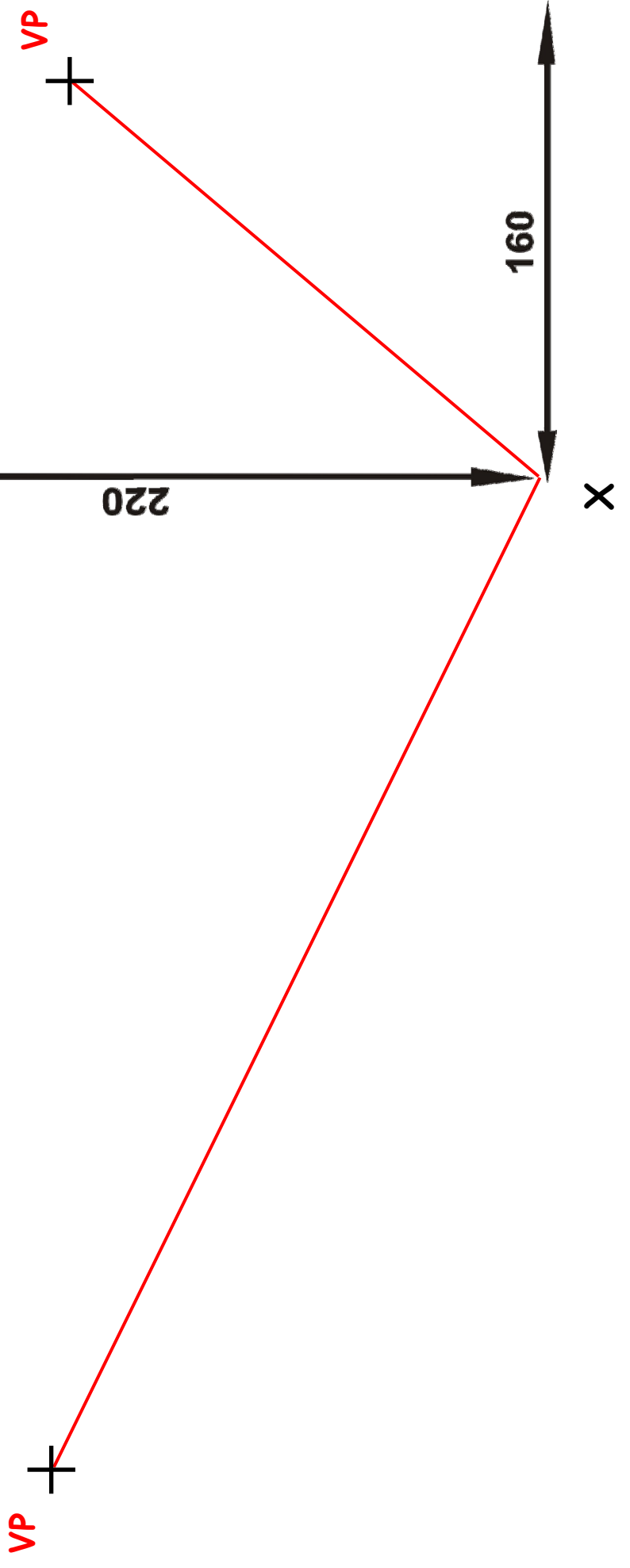
Technical Department



Nat 4 & 5 - Graphic Communication

2pt Perspective Drawing Practice

Suggested A3 Page Layout

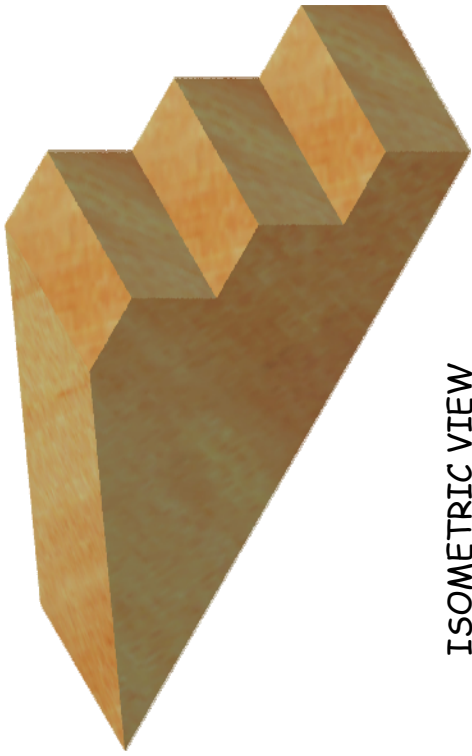


NAME	CLASS	DATE		2pt PERSPECTIVE VIEWS - 1
------	-------	------	--	---------------------------

2Pt perspective views - Shape 1 - Step

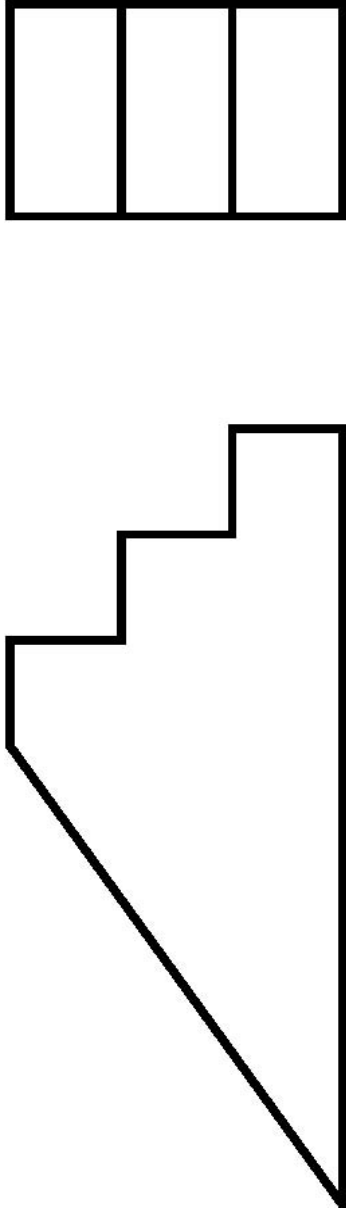
A straight edge can be used.

Try to sketch your drawing in proportion.



ISOMETRIC VIEW

X



X

X

ELEVATION

END ELEVATION

Sketch, in the suggested position shown in Page 1, 2pt perspective of the step shown by the views above.

2Pt perspective views - Shape 2 - Bungalow

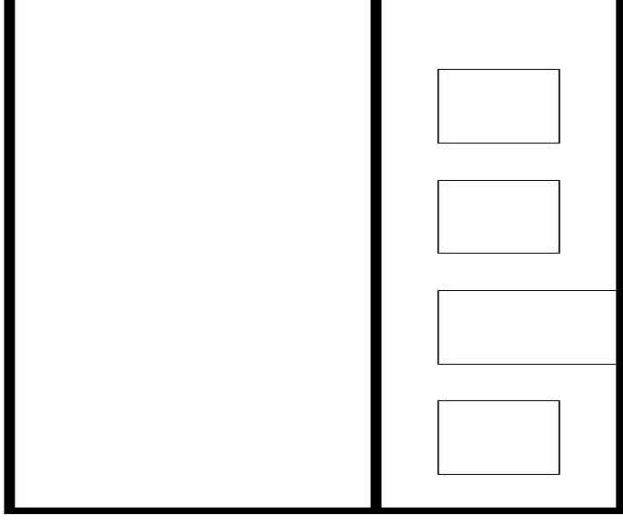
A straight edge can be used.

Try to sketch your drawing in proportion.



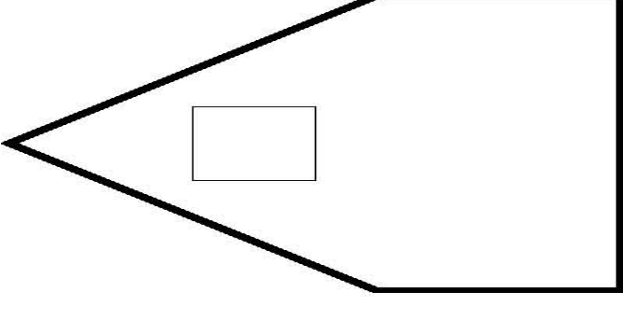
ISOMETRIC VIEW

X



X

ELEVATION



X

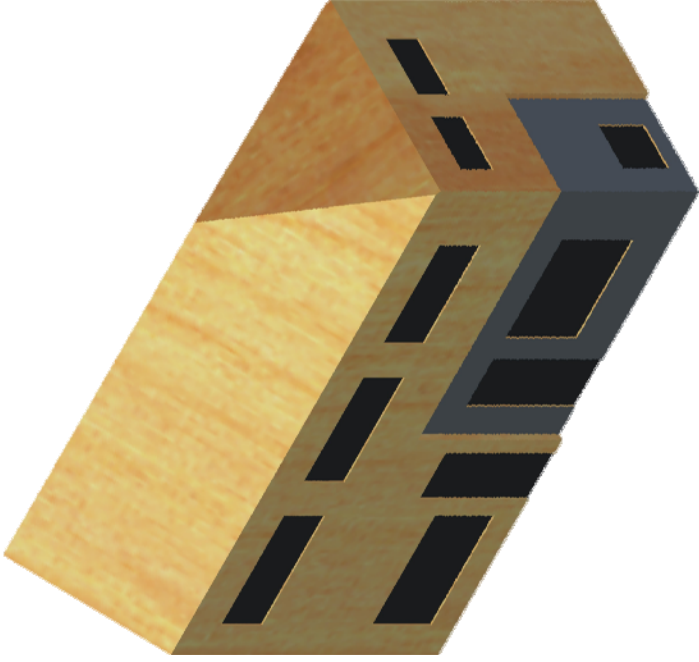
END ELEVATION

Sketch, in the suggested position shown in Page 1, A 2pt perspective of the bungalow shown by the views above.

2Pt perspective views - Shape 3 - Shops

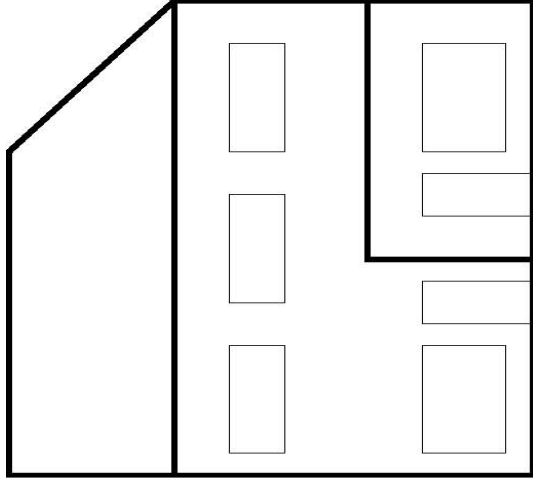
A straight edge can be used.

Try to sketch your drawing in proportion.



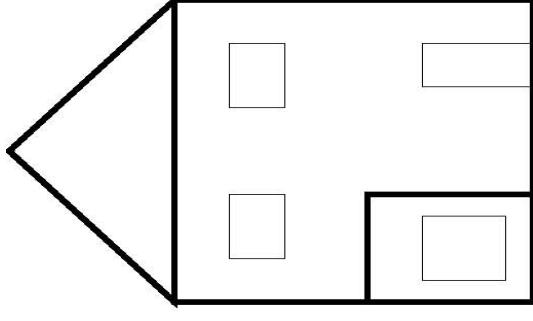
X

ISOMETRIC VIEW



X

ELEVATION



X

END ELEVATION

Sketch, in the suggested position shown in Page 1,
A 2pt perspective of the shops shown by the views
above.

2Pt perspective views - Shape 4

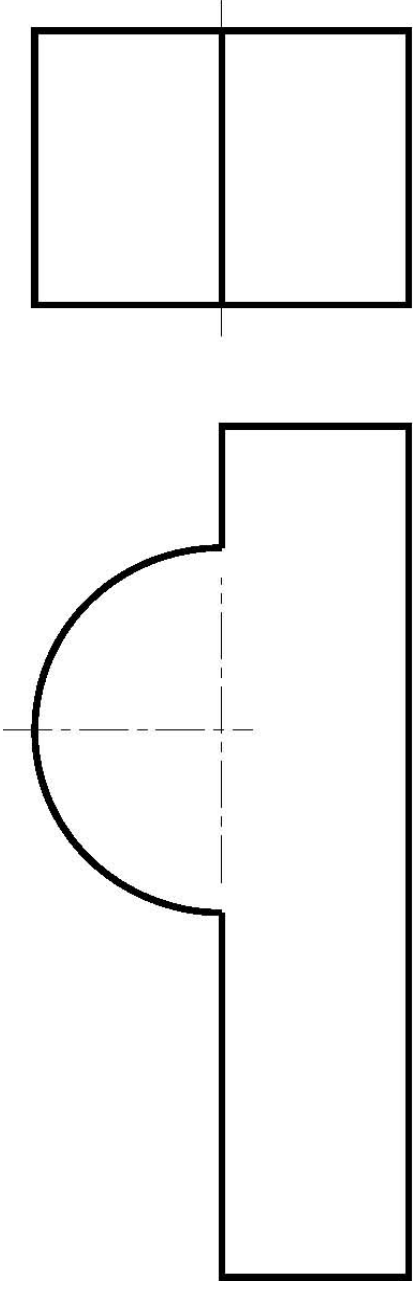
A straight edge can be used.

Try to sketch your drawing in proportion.

ISOMETRIC VIEW



X



X

X

ELEVATION

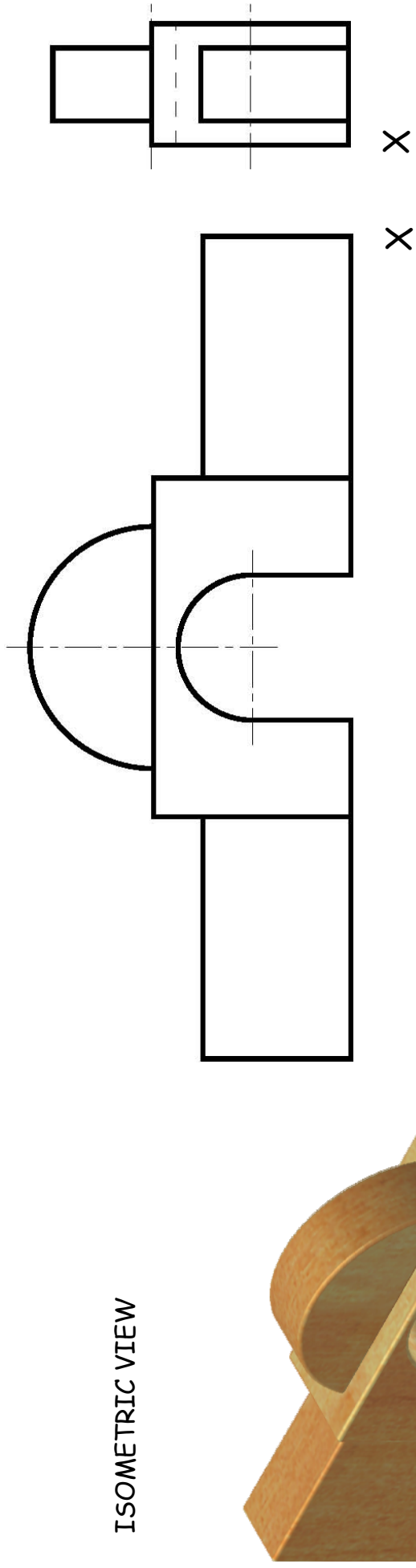
END ELEVATION

Sketch, in the suggested position shown in Page 1,
A 2pt perspective of the shape shown by the views
above.

2Pt perspective views - Shape 5

A straight edge can be used.

Try to sketch your drawing in proportion.



ISOMETRIC VIEW

ELEVATION

END ELEVATION

X

Sketch, in the suggested position shown in Page 1, A 2pt perspective of the wall shown by the views above.

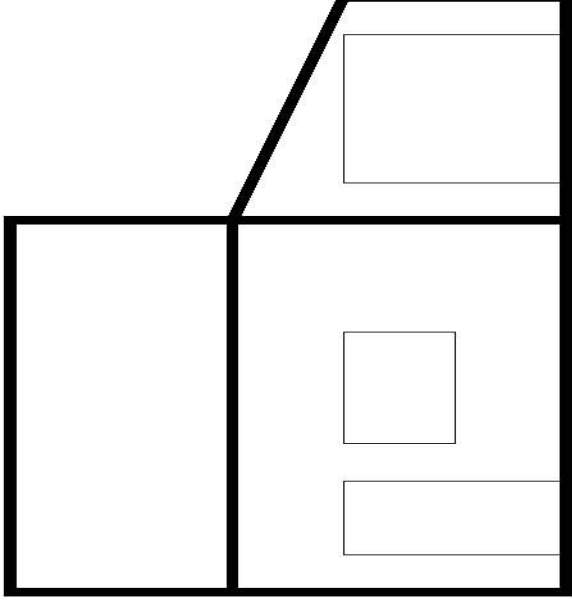
2Pt perspective views - Shape 6 - Bungalow

A straight edge can be used.

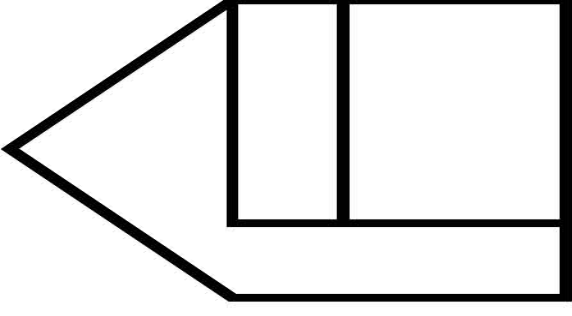
Try to sketch your drawing in proportion.



ISOMETRIC VIEW



ELEVATION



END ELEVATION

Sketch, in the suggested position shown in Page 1, A 2pt perspective of the bungalow shown by the views above.

2Pt perspective views - Shape 7 - Bungalow

A straight edge can be used.

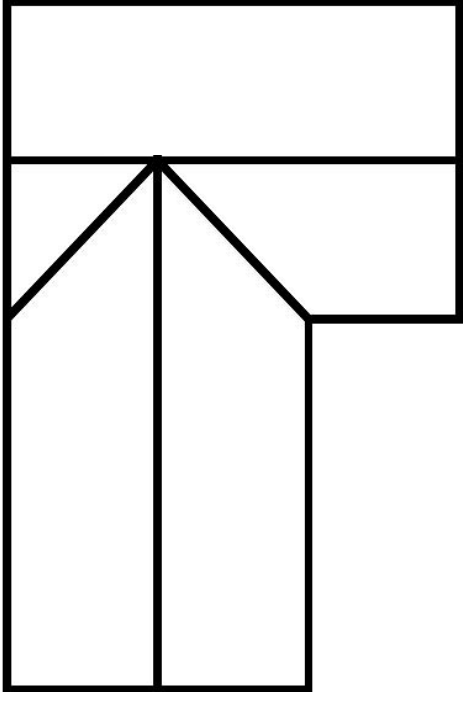
Try to sketch your drawing in proportion.



X

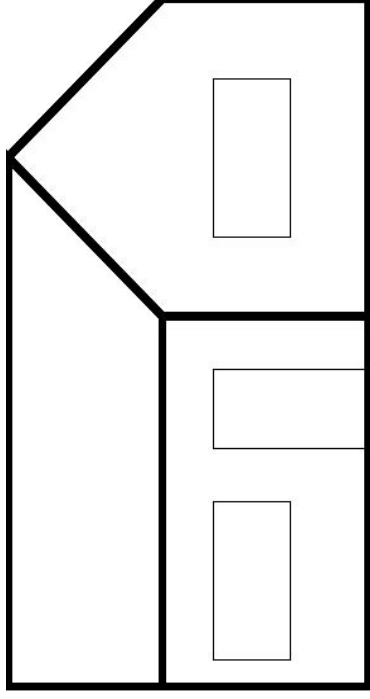
ISOMETRIC VIEW

Sketch, in the suggested position shown in Page 1,
A 2pt perspective of the bungalow shown by the
views above.



PLAN

X



ELEVATION

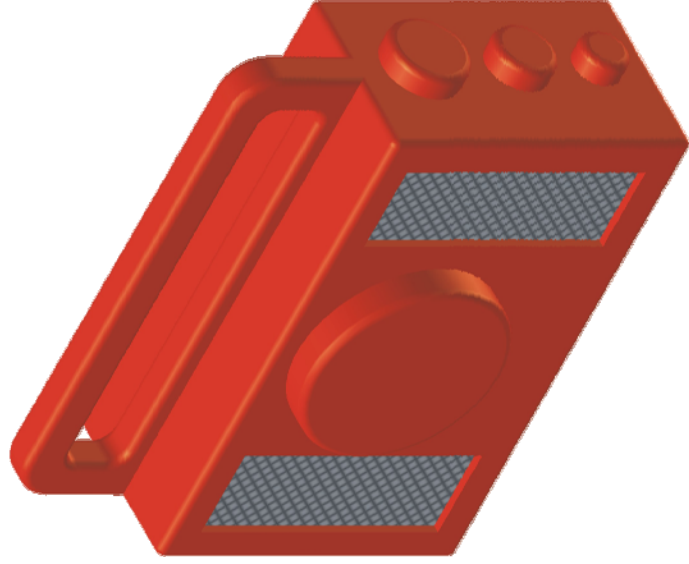
X

2Pt perspective views - Shape 8 - CD Player

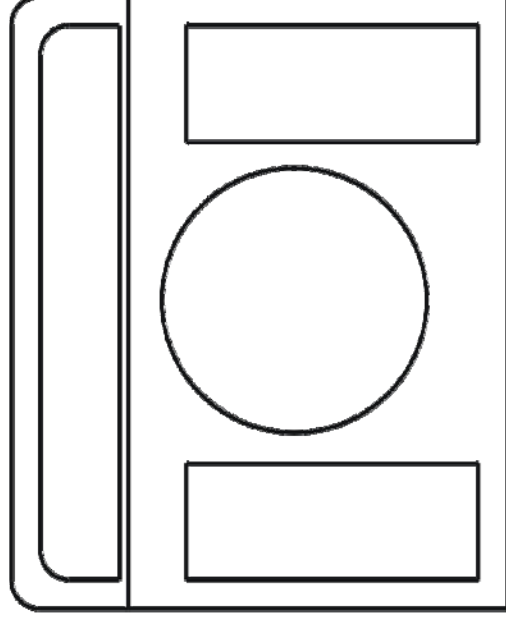
A straight edge can be used.

Try to sketch your drawing in proportion.

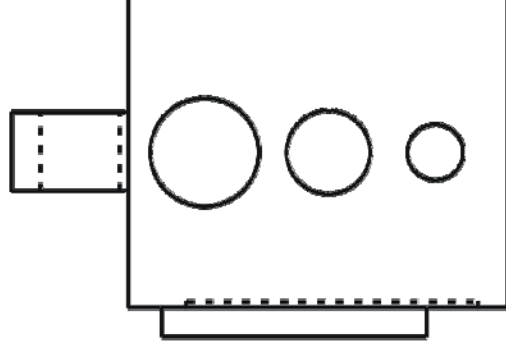
ISOMETRIC VIEW



X



ELEVATION



END ELEVATION

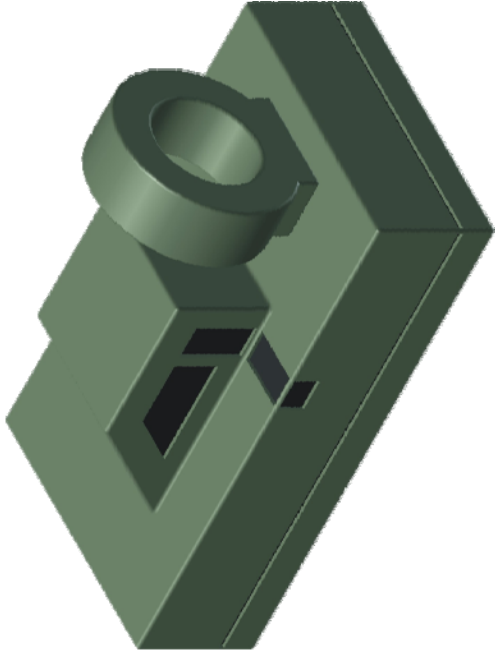
Sketch, in the suggested position shown in Page 1,
A 2pt perspective of the CD Player shown by the
views above.

2Pt perspective views - Shape 9 - Hovercraft

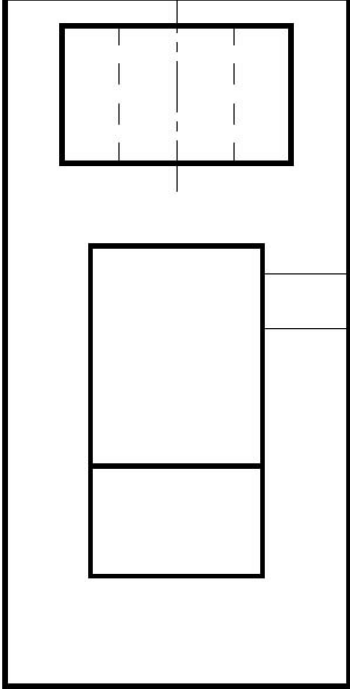
A straight edge can be used.

Try to sketch your drawing in proportion.

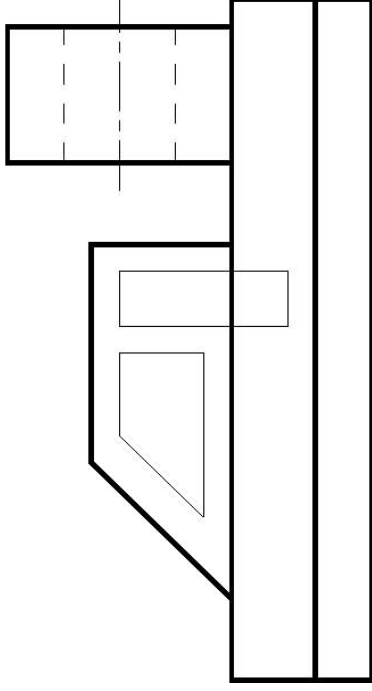
ISOMETRIC VIEW



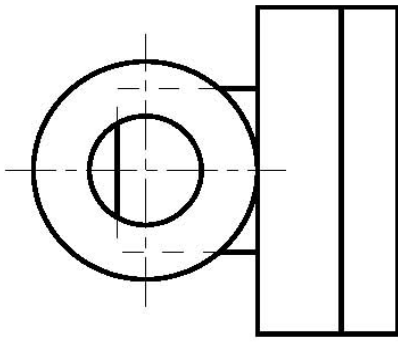
X



PLAN



ELEVATION



END ELEVATION

Sketch, in the suggested position shown in Page 1, A 2pt perspective of the hovercraft shown by the views above.

2Pt perspective views - Shape 10 - Torch

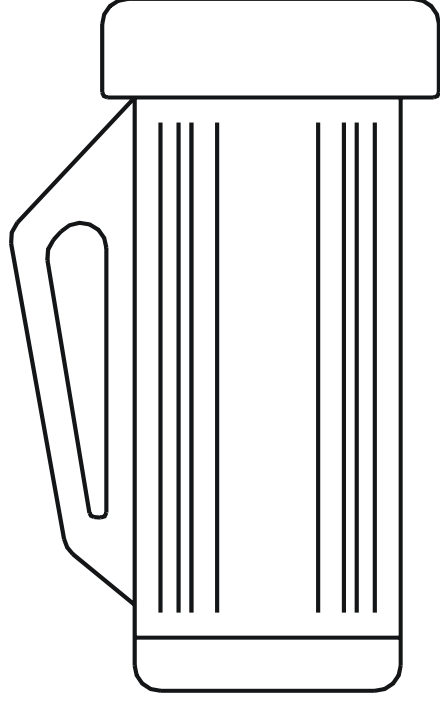
A straight edge can be used.

Try to sketch your drawing in proportion.

ISOMETRIC VIEW

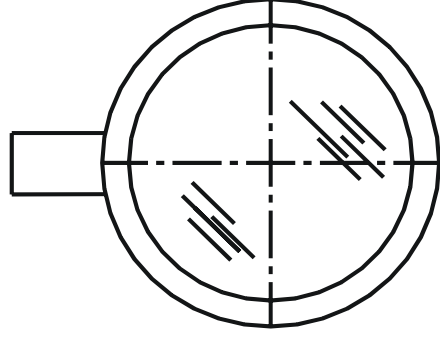


X



X

ELEVATION



X

END ELEVATION

Sketch, in the suggested position shown in Page 1,
A 2pt perspective of the torch shown by the views
above.