

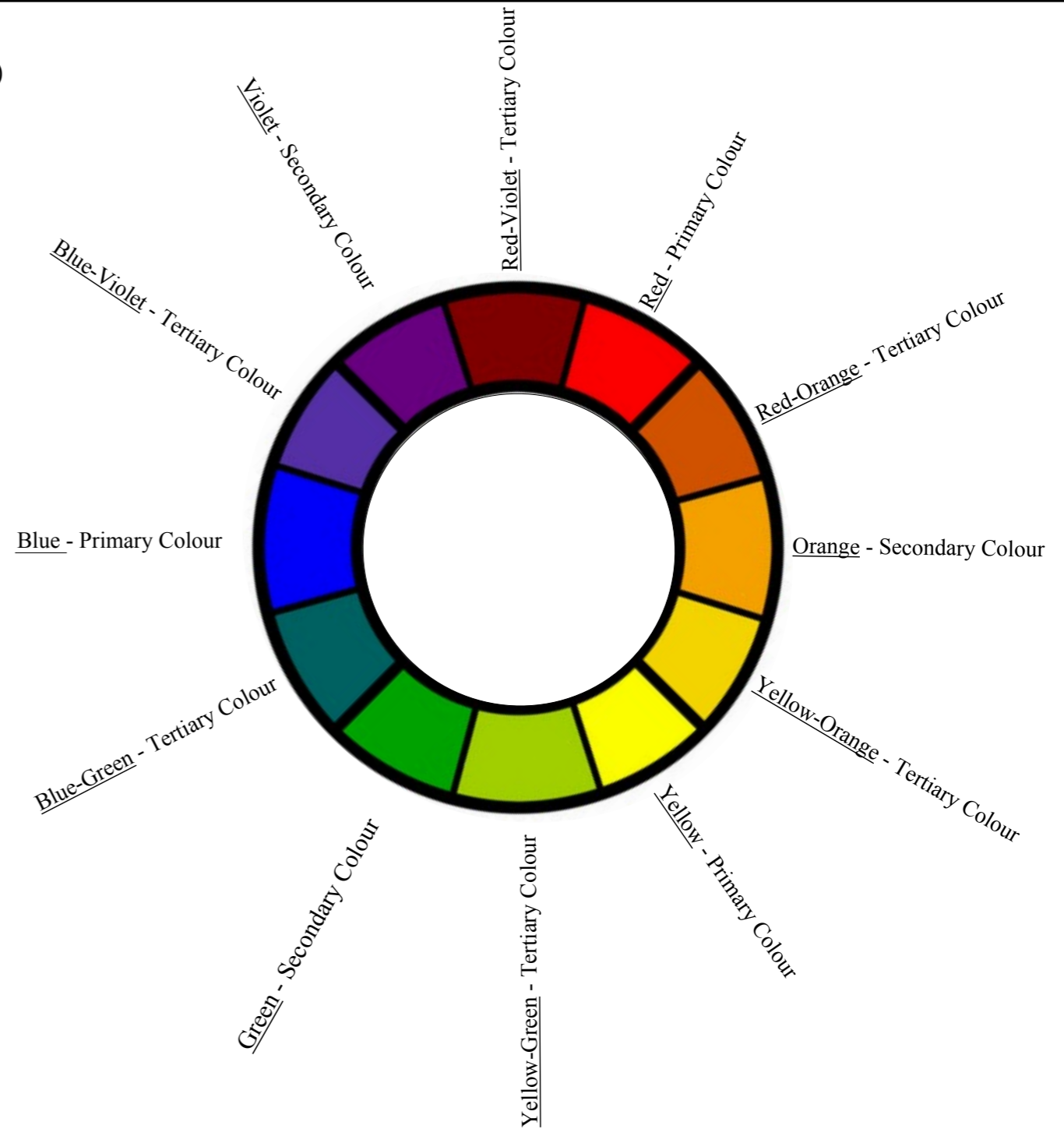
L1a  
 Choose 4 colours from the colour wheel shown opposite (they may be primary, secondary or, tertiary colours)  
 - Shade in the 4 rectangles given to produce a tonal range (light to dark) for each of your chosen colours.

Colour 1 \_\_\_\_\_

Colour 2 \_\_\_\_\_

Colour 3 \_\_\_\_\_

Colour 4 \_\_\_\_\_



L1b  
 Choose 2 HARMONISING colours. Shade the rectangle below by blending your 2 chosen colours together.  
 (Harmonising colours are next to each other on the colour wheel)

L1c  
 Choose 2 CONTRASTING colours. Shade the 2 rectangles below using your 2 chosen colours.  
 (Contrasting colours are not close to each other on the colour wheel)

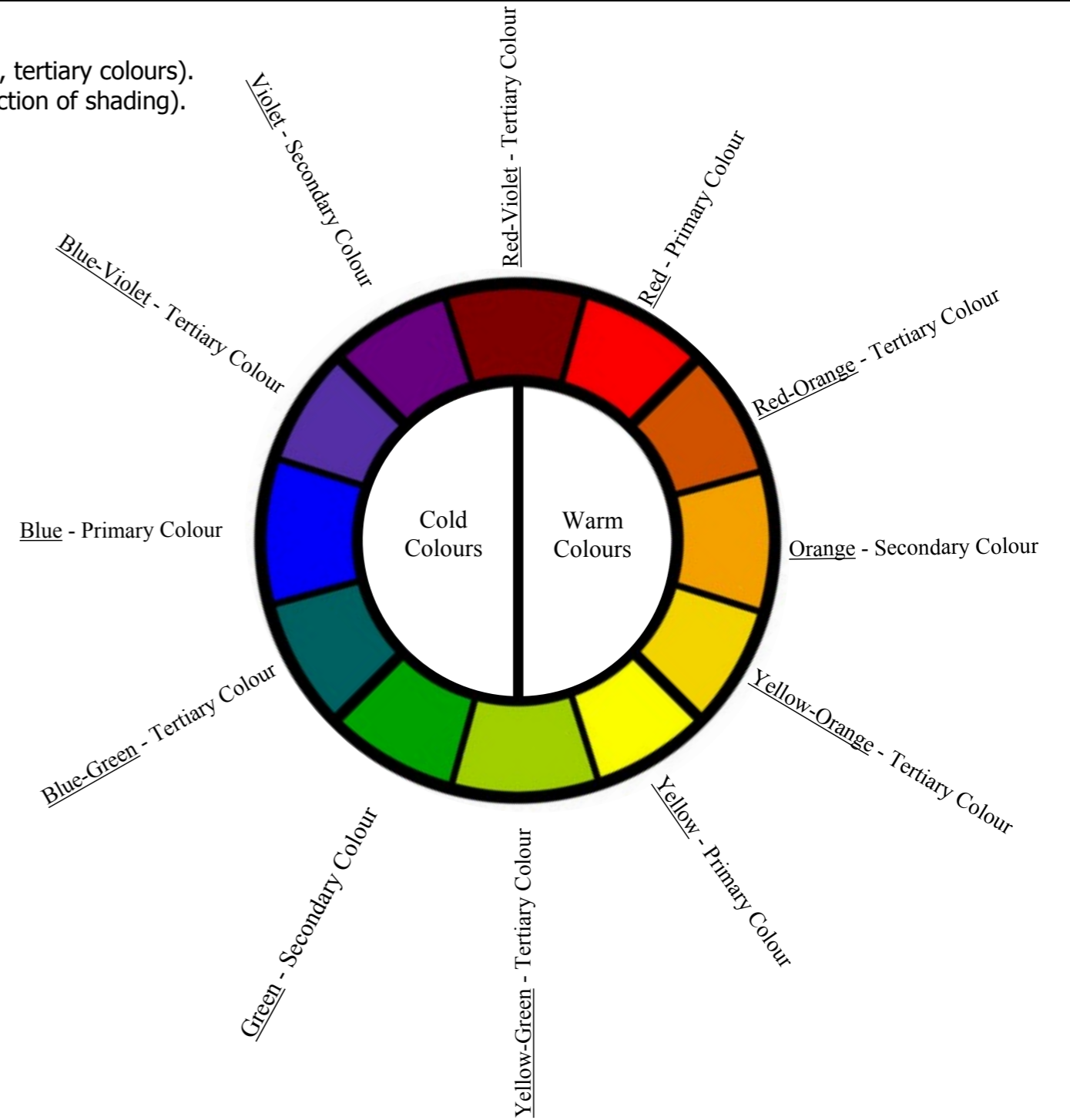
|                          | Good | N to I |
|--------------------------|------|--------|
| Quality of Rendering     |      |        |
| Correct use of rendering |      |        |

|                     |      |                   |             |                |
|---------------------|------|-------------------|-------------|----------------|
| Nat4                | Nat5 | Name              | Class       |                |
| 2D Unit Outcome 1&2 |      | Teacher's Comment | Date Issued | Date Completed |

L2a  
 Choose 1 warm and 1 cold colour from the colour wheel shown opposite (they may be primary, secondary or, tertiary colours).  
 - Render the words below using the techniques you have learned on the previous page (tonal scale and direction of shading).

*Warm*

*Cold*



L2b  
 Below are two in-complete statements. Fill in the blanks using the word bank given.

By adding \_\_\_\_\_ to a colour you can create a **tint** of that colour.

By adding \_\_\_\_\_ or \_\_\_\_\_ to a colour you can create a **shade** of that colour.

| Wordbank |      |       |
|----------|------|-------|
| Black    | Grey | White |

|                            | Good | N to I |
|----------------------------|------|--------|
| Quality of Rendering       |      |        |
| Correct use of rendering   |      |        |
| Correct use of terminology |      |        |

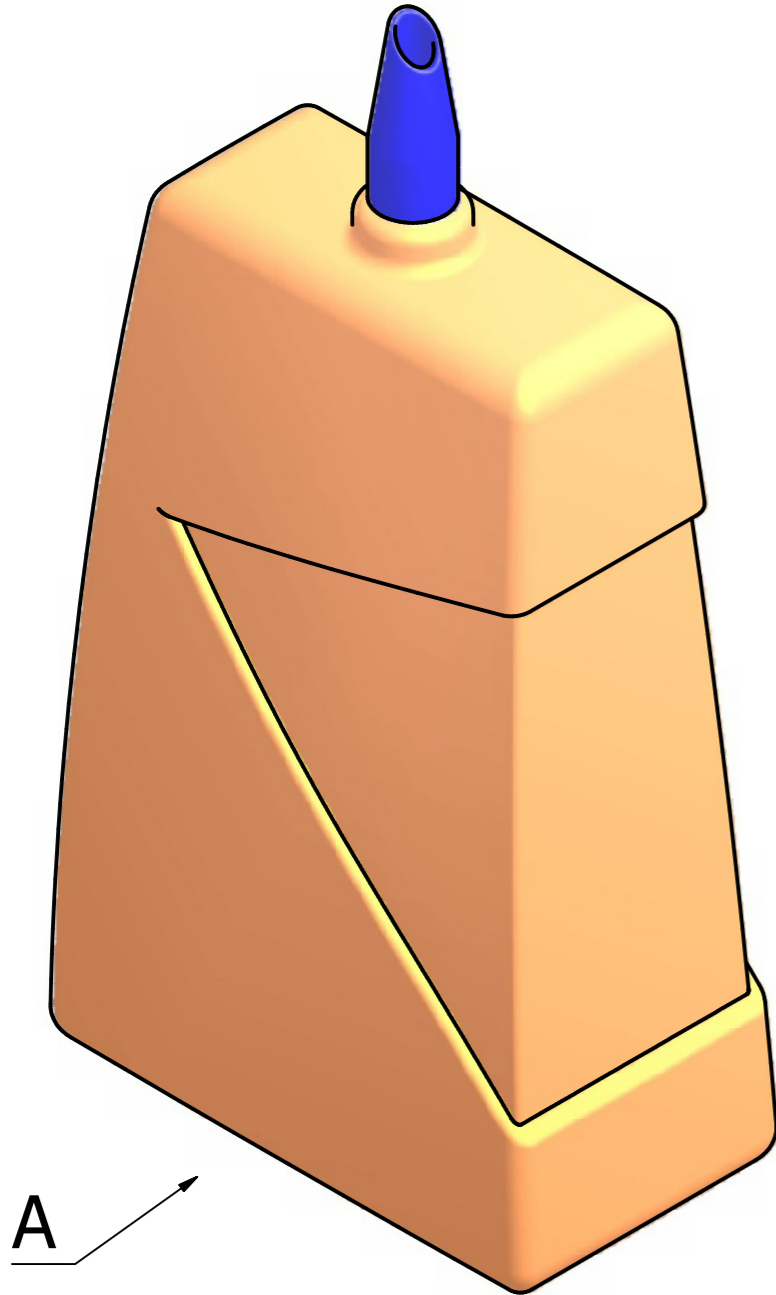
|                     |      |                   |             |                |
|---------------------|------|-------------------|-------------|----------------|
| Nat4                | Nat5 | Name              | Class       |                |
| 2D Unit Outcome 1&2 |      | Teacher's Comment | Date Issued | Date Completed |

L3

A pictorial view of a paint bottle is given.

Sketch in good proportion an Elevation view of the paint bottle in the direction of arrow A.

Render your sketch to include use of colour, light, shade, and tone.



|                            | Good | N to I |
|----------------------------|------|--------|
| Quality of Sketching       |      |        |
| Effective use of rendering |      |        |
| Effective use of colour    |      |        |
| Effective presentation     |      |        |

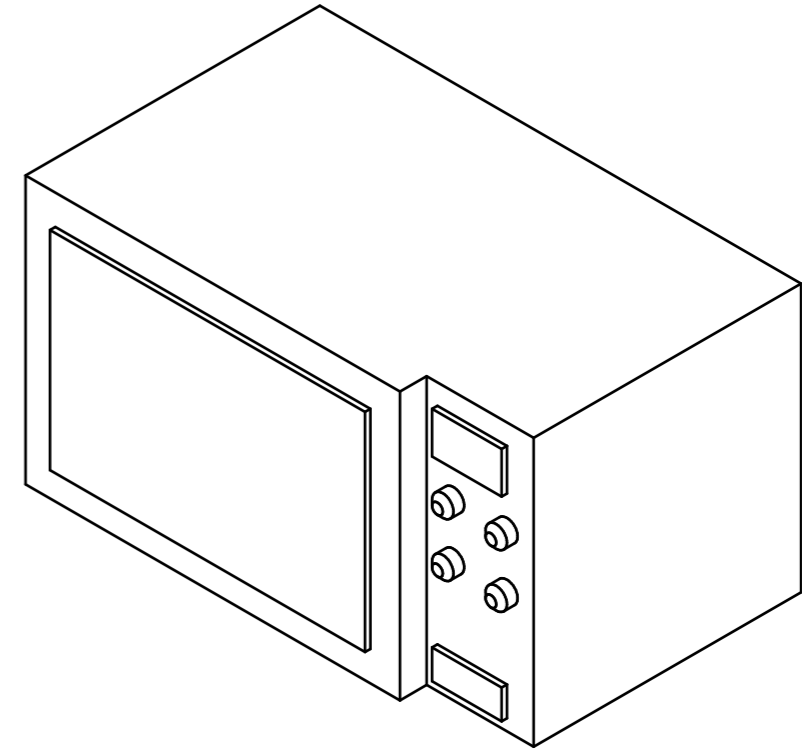
Elevation

|                     |      |                   |             |                |  |
|---------------------|------|-------------------|-------------|----------------|--|
| Nat4                | Nat5 | Name              | Class       |                |  |
| 2D Unit Outcome 1&2 |      | Teacher's Comment | Date Issued | Date Completed |  |

L4

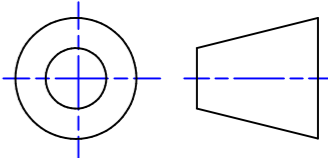
A pictorial view of a microwave oven is given.

Sketch in good proportion an orthographic view of the front of the microwave oven using the given starting point.



Elevation

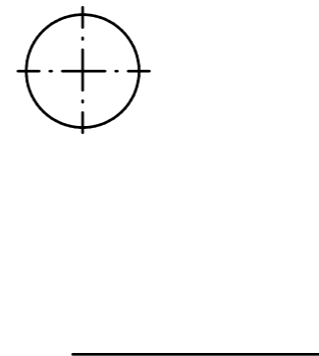
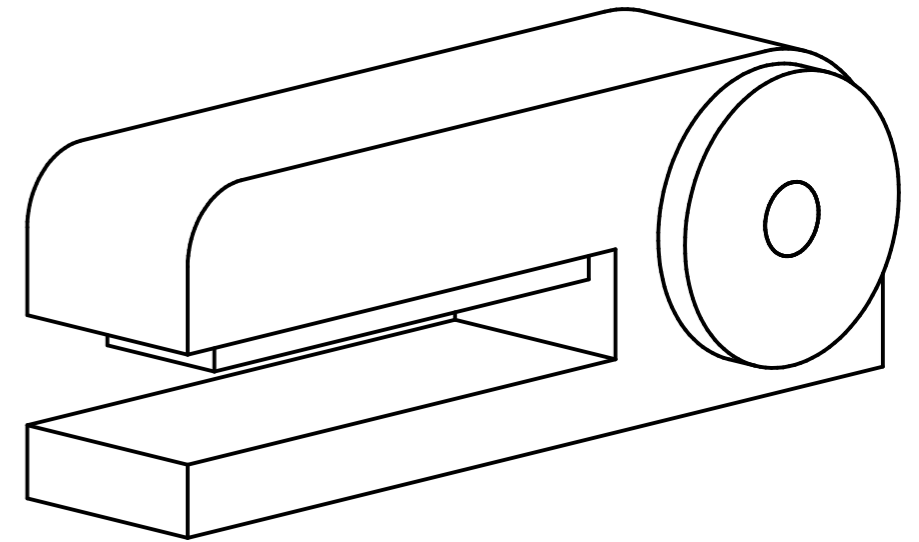
|                           | Good | N to 1 |
|---------------------------|------|--------|
| Use of construction lines |      |        |
| Use of outlines           |      |        |
| Correct Proportions       |      |        |
| Quality of Sketching      |      |        |

|                   |      |                   |             |                |   |
|-------------------|------|-------------------|-------------|----------------|---|
| Nat4              | Nat5 | Name              | Class       |                |  |
| 2D Unit Outcome 1 |      | Teacher's Comment | Date Issued | Date Completed |   |

L5

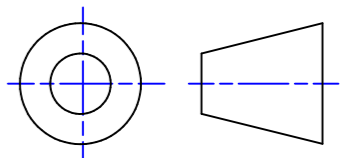
A pictorial view of a stapler is given.

Sketch in good proportion an elevational orthographic view of the stapler using the given starting point.



### Elevation

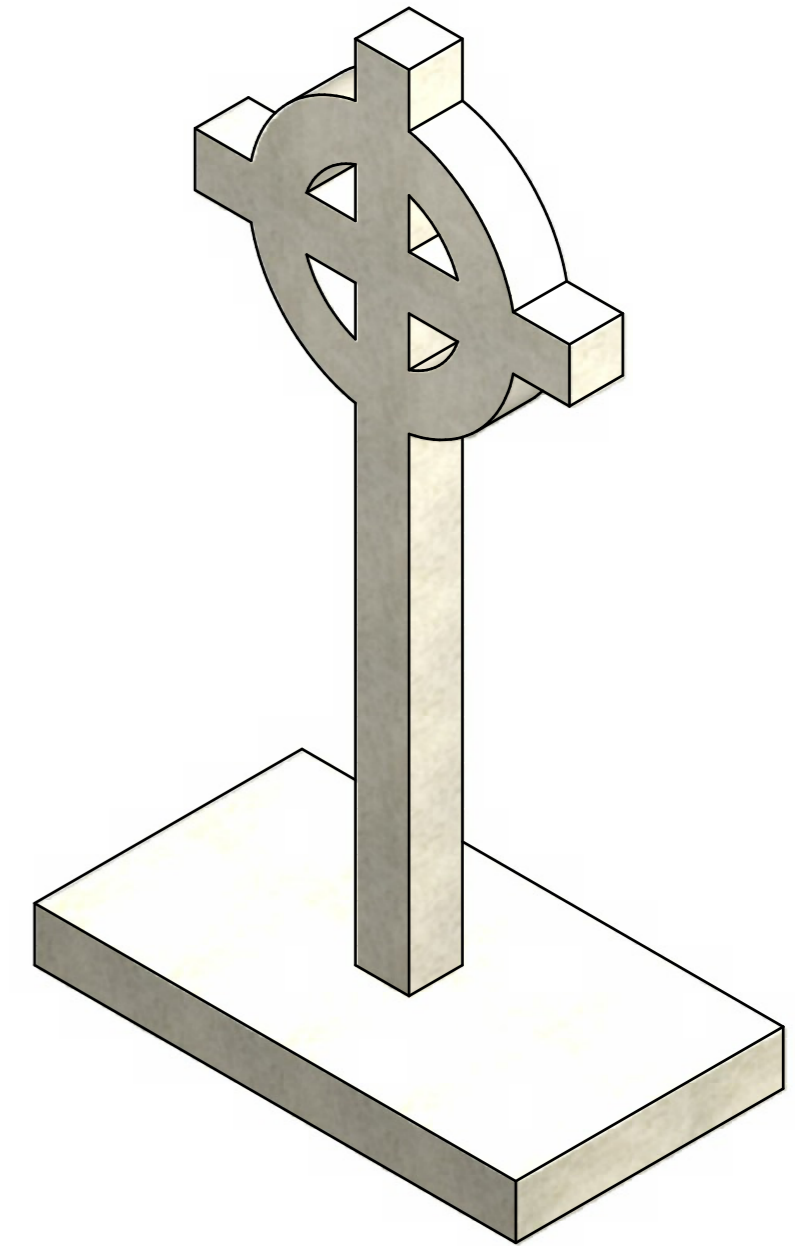
|                           | Good | N to I |
|---------------------------|------|--------|
| Use of construction lines |      |        |
| Use of outlines           |      |        |
| Correct Proportions       |      |        |
| Quality of Sketching      |      |        |

|                   |      |                   |             |                |   |
|-------------------|------|-------------------|-------------|----------------|---|
| Nat4              | Nat5 | Name              | Class       |                |  |
| 2D Unit Outcome 1 |      | Teacher's Comment | Date Issued | Date Completed |   |

L6

A pictorial view of a war memorial is given.

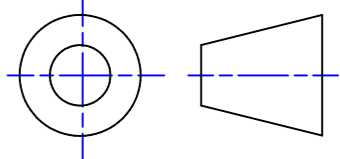
Sketch in good proportion the Elevation and Plan views of the war memorial using the given starting points.



Plan

Elevation

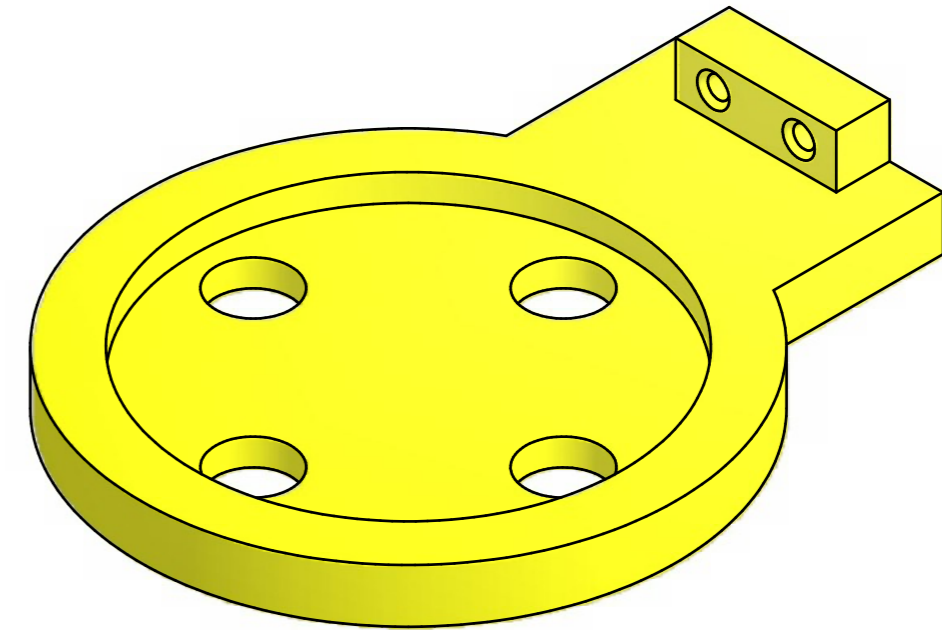
|                           | Good | N to 1 |
|---------------------------|------|--------|
| Use of construction lines |      |        |
| Use of outlines           |      |        |
| Correct Proportions       |      |        |
| Quality of Sketching      |      |        |

|                   |      |                   |             |                |   |
|-------------------|------|-------------------|-------------|----------------|---|
| Nat4              | Nat5 | Name              | Class       |                |  |
| 2D Unit Outcome 1 |      | Teacher's Comment | Date Issued | Date Completed |   |

L7

A pictorial view of a toothbrush holder is given.

Sketch in good proportion the Elevation and Plan views of the toothbrush holder using the given starting point.



Plan

Elevation

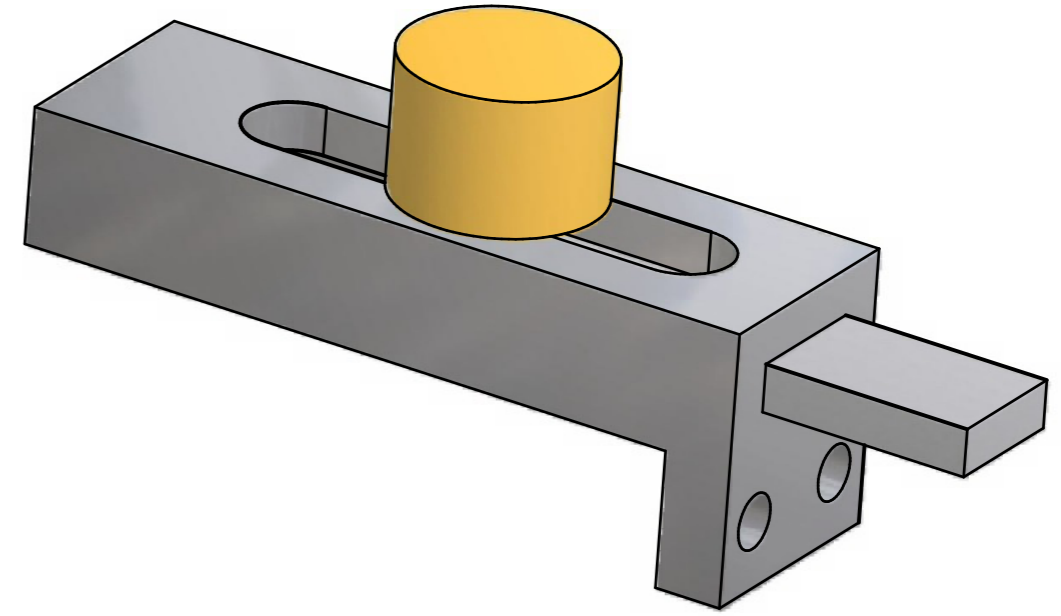
|                           | Good | N to I |
|---------------------------|------|--------|
| Use of construction lines |      |        |
| Use of outlines           |      |        |
| Correct Proportions       |      |        |
| Quality of Sketching      |      |        |

|                   |      |                   |             |                |  |
|-------------------|------|-------------------|-------------|----------------|--|
| Nat4              | Nat5 | Name              | Class       |                |  |
| 2D Unit Outcome 1 |      | Teacher's Comment | Date Issued | Date Completed |  |

L8

A pictorial view of a slide bolt is given.

Sketch in good proportion the Elevation and End Elevation orthographic views of the slide bolt using the given starting positions.



Elevation

End Elevation

|                           | Good | N to I |
|---------------------------|------|--------|
| Use of construction lines |      |        |
| Use of outlines           |      |        |
| Correct Proportions       |      |        |
| Quality of Sketching      |      |        |

|      |              |                   |             |                |  |
|------|--------------|-------------------|-------------|----------------|--|
| Nat4 | Nat5         | Name              | Class       |                |  |
| N/A  | 2D Outcome 1 | Teacher's Comment | Date Issued | Date Completed |  |

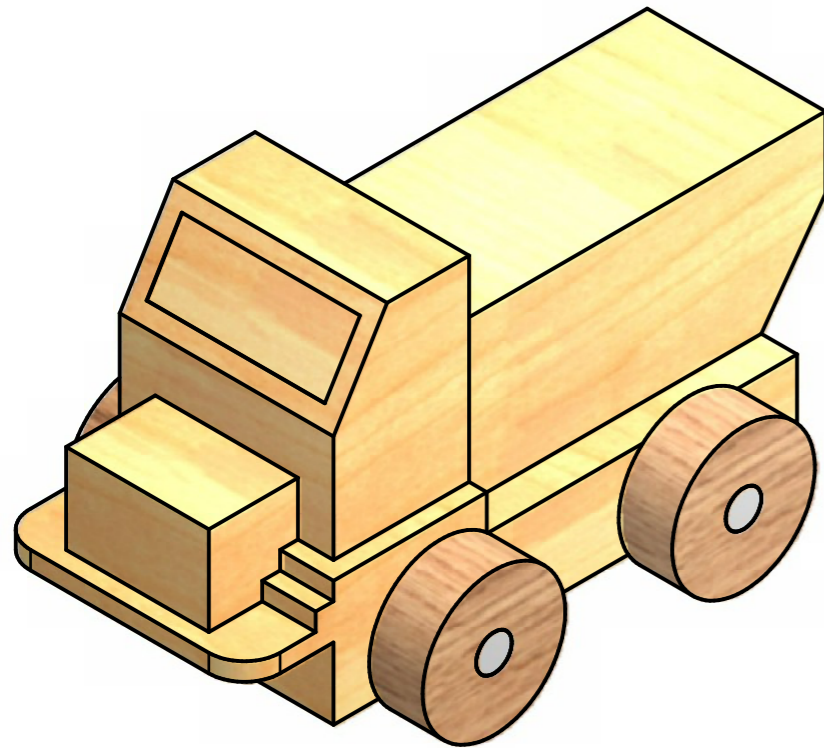


L9

A pictorial view of a toy truck is given.

Sketch in good proportion orthographic views of the toy truck using the given starting positions.

|                           |      |        |
|---------------------------|------|--------|
|                           | Good | N to I |
| Use of construction lines |      |        |
| Use of outlines           |      |        |
| Correct Proportions       |      |        |
| Quality of Sketching      |      |        |



Plan



End Elevation

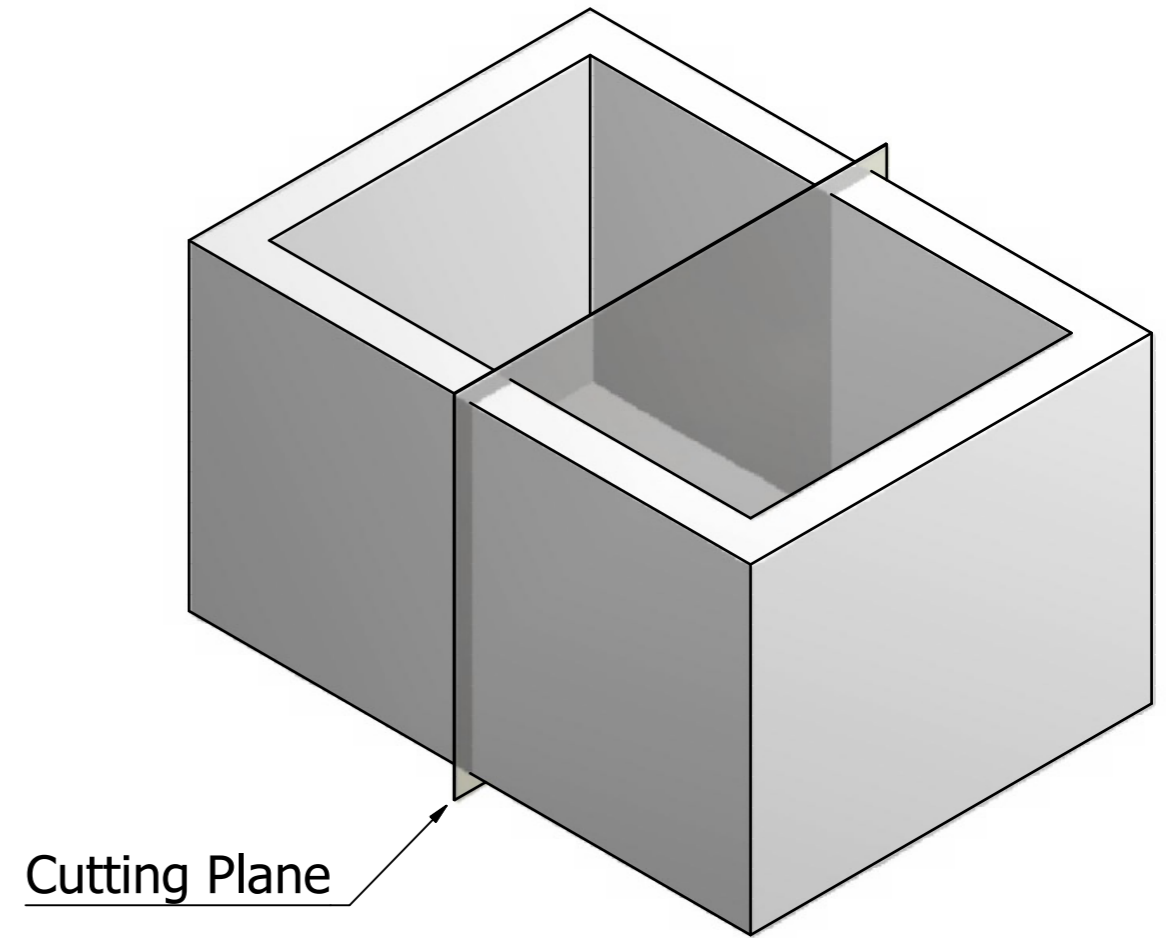
Elevation

|      |              |                   |             |                |  |
|------|--------------|-------------------|-------------|----------------|--|
| Nat4 | Nat5         | Name              | Class       |                |  |
| N/A  | 2D Outcome 1 | Teacher's Comment | Date Issued | Date Completed |  |

M1

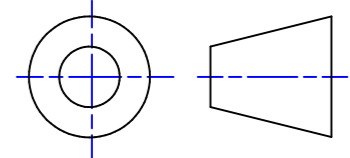
A pictorial view of an open box is given.

Sketch in good proportion a sectional elevation view of the box on the cutting plane shown.



## Sectional Elevation

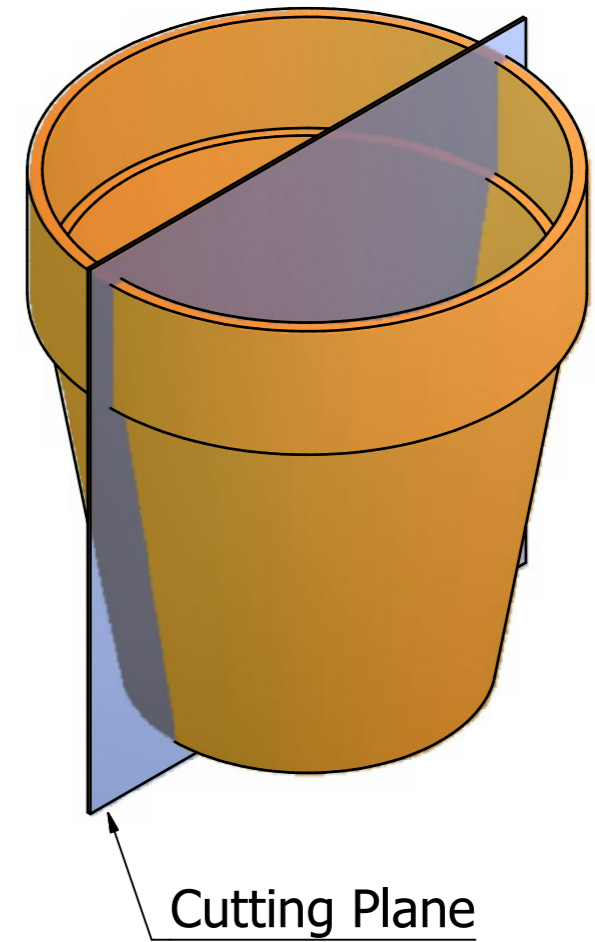
|                           | Good | N to I |
|---------------------------|------|--------|
| Use of construction lines |      |        |
| Use of outlines           |      |        |
| Correct Proportions       |      |        |
| Quality of Sketching      |      |        |

|                   |      |                   |             |                |   |
|-------------------|------|-------------------|-------------|----------------|---|
| Nat4              | Nat5 | Name              | Class       |                |  |
| 2D Unit Outcome 1 |      | Teacher's Comment | Date Issued | Date Completed |   |

M2

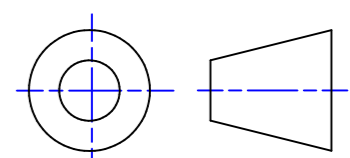
A pictorial view of a flowerpot is given.

Sketch in good proportion a sectional elevation view of the flowerpot on the cutting plane shown.



## Sectional Elevation

|                           | Good | N to I |
|---------------------------|------|--------|
| Use of construction lines |      |        |
| Use of outlines           |      |        |
| Correct Proportions       |      |        |
| Quality of Sketching      |      |        |

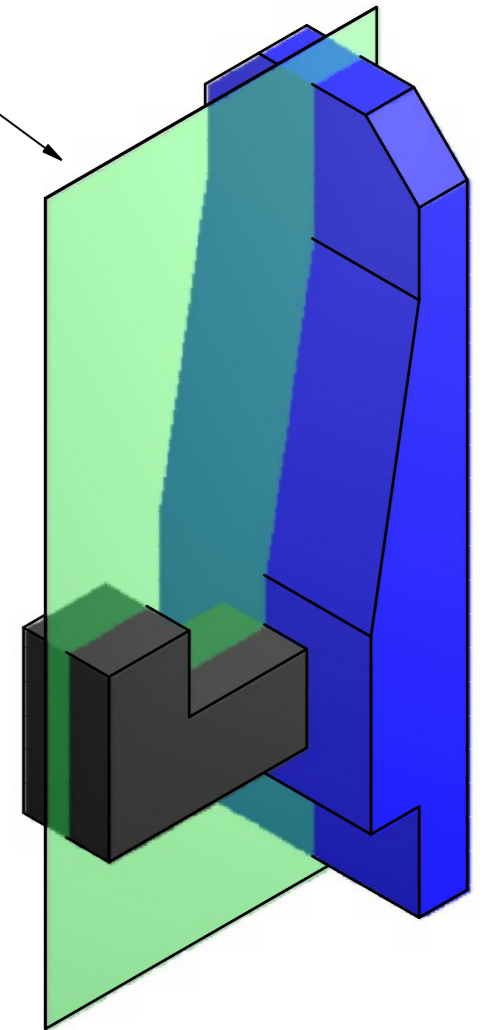
|                   |      |                   |             |                |   |
|-------------------|------|-------------------|-------------|----------------|---|
| Nat4              | Nat5 | Name              | Class       |                |  |
| 2D Unit Outcome 1 |      | Teacher's Comment | Date Issued | Date Completed |   |

M3

A pictorial view of a coat hook is given.

Sketch in good proportion an elevation, plan and sectional end elevation view of the coat hook on the cutting plane shown.

Cutting Plane



Plan

Elevation

Sectional End Elevation

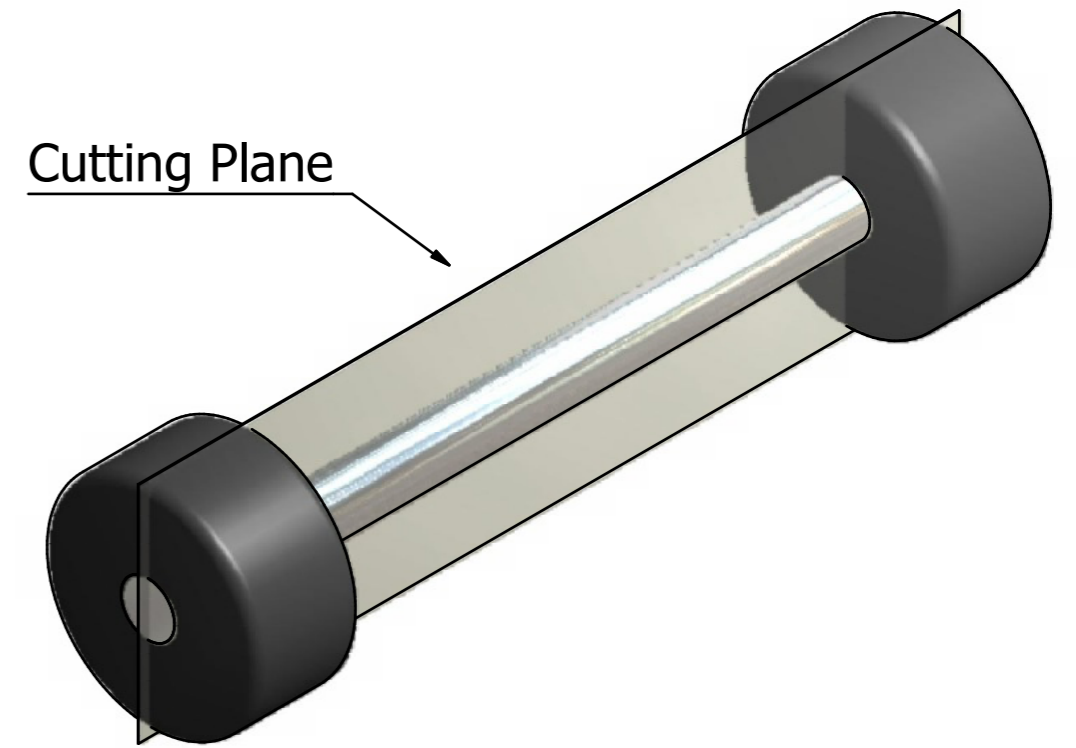
|                           | Good | N to I |
|---------------------------|------|--------|
| Use of construction lines |      |        |
| Use of outlines           |      |        |
| Correct Proportions       |      |        |
| Quality of Sketching      |      |        |

|      |              |                   |             |                |  |
|------|--------------|-------------------|-------------|----------------|--|
| Nat4 | Nat5         | Name              | Class       |                |  |
| N/A  | 2D Outcome 1 | Teacher's Comment | Date Issued | Date Completed |  |

M4

A pictorial view of a bell-bar weight is given.

Sketch in good proportion a plan, sectional elevation and end elevation of the weights on the cutting plane shown.



Plan

Sectional Elevation

End Elevation

|                           | Good | N to I |
|---------------------------|------|--------|
| Use of construction lines |      |        |
| Use of outlines           |      |        |
| Correct Proportions       |      |        |
| Quality of Sketching      |      |        |

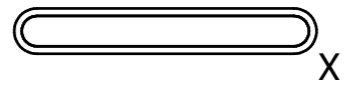
|      |              |                   |             |                |  |
|------|--------------|-------------------|-------------|----------------|--|
| Nat4 | Nat5         | Name              | Class       |                |  |
| N/A  | 2D Outcome 1 | Teacher's Comment | Date Issued | Date Completed |  |

N1  
Orthographic views of an MP3 player are given below.

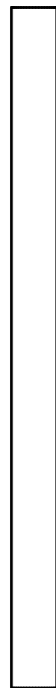
Sketch in good proportion a one-point perspective view of the MP3 player using the given vanishing point.

Render your sketch to include use of colour, light, shade, and tone.

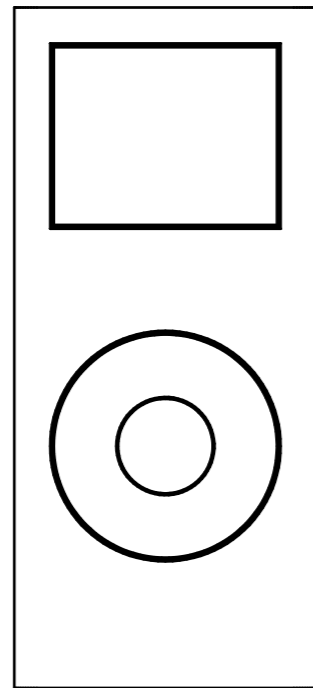
VP1



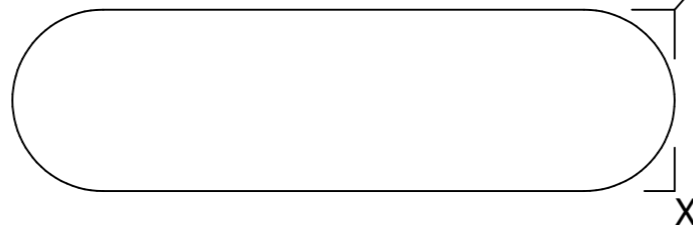
Plan



End Elevation



Elevation



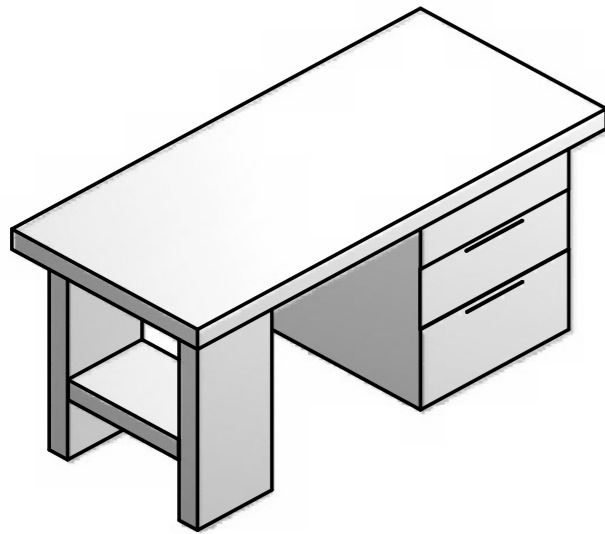
|                           | Good | N to I |
|---------------------------|------|--------|
| Use of construction lines |      |        |
| Use of outlines           |      |        |
| Correct Proportions       |      |        |
| Quality of Sketching      |      |        |

|                   |      |                   |             |                |  |
|-------------------|------|-------------------|-------------|----------------|--|
| Nat4              | Nat5 | Name              | Class       |                |  |
| 3D Unit Outcome 1 |      | Teacher's Comment | Date Issued | Date Completed |  |

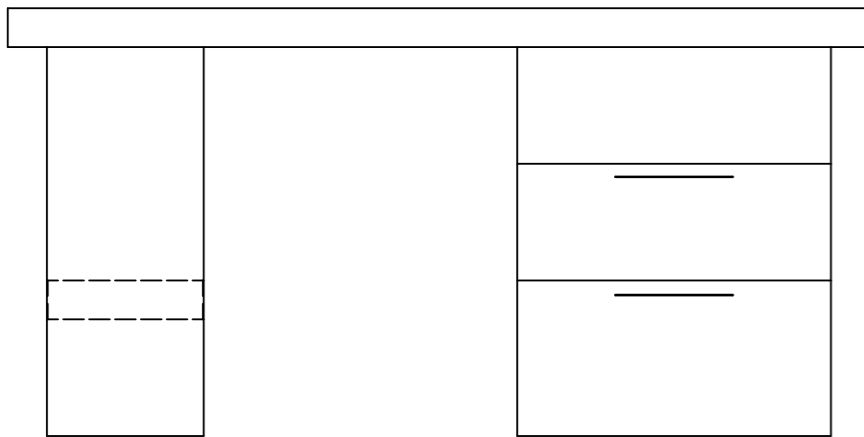
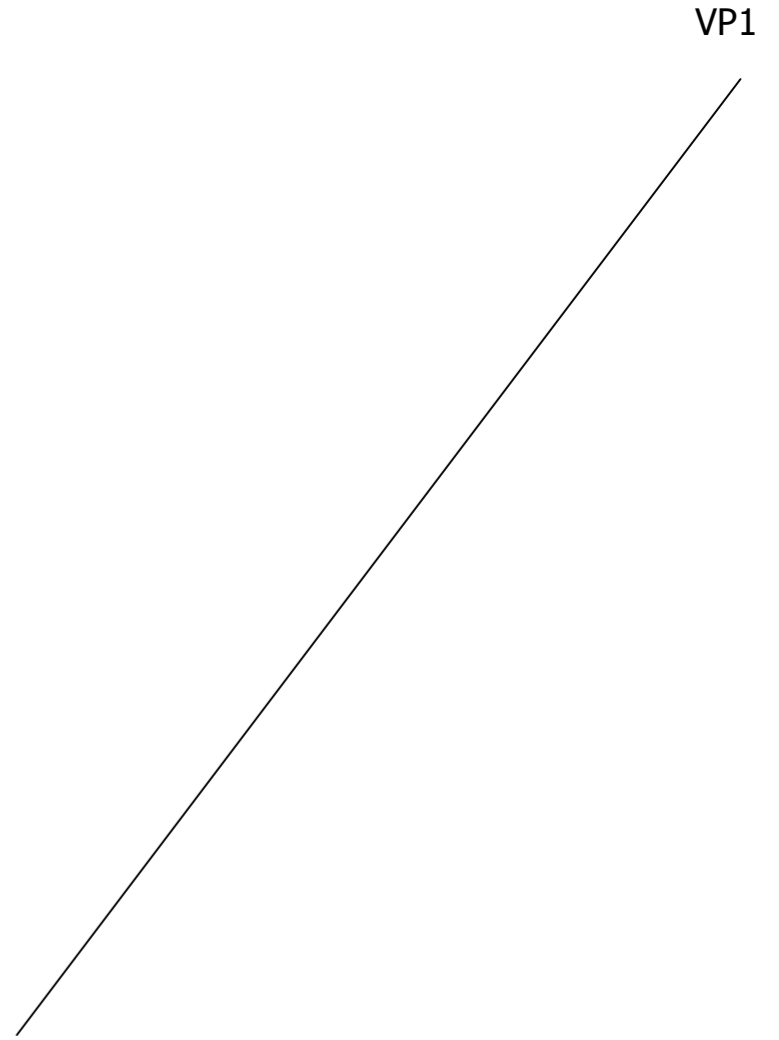
N2

An Isometric view and the Elevation view of a desk are given.

Sketch in good proportion a one-point perspective view of the desk using the given vanishing point.



Isometric View



Elevation

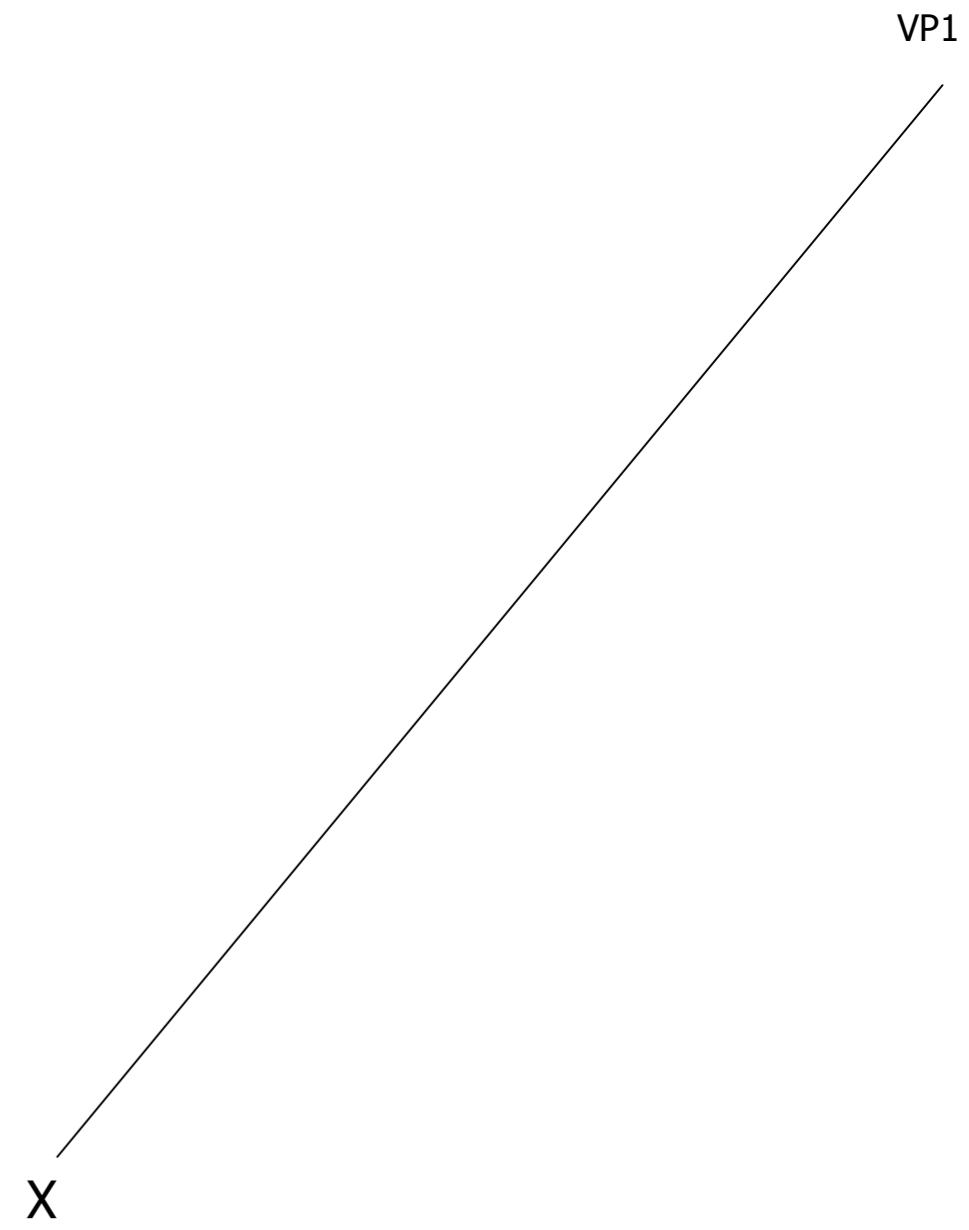
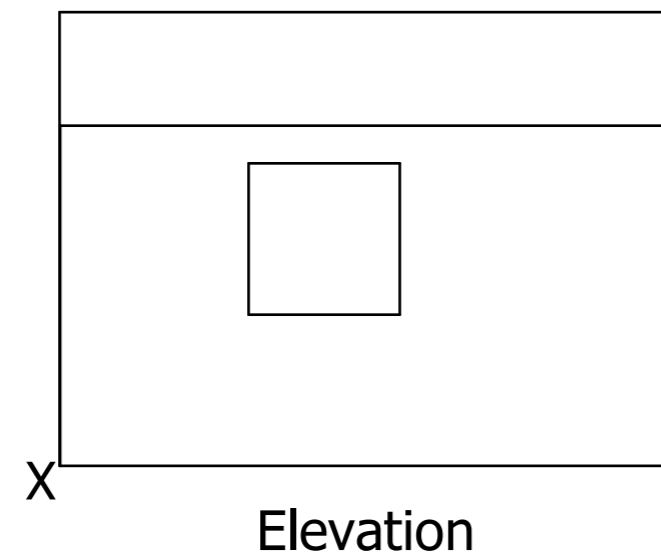
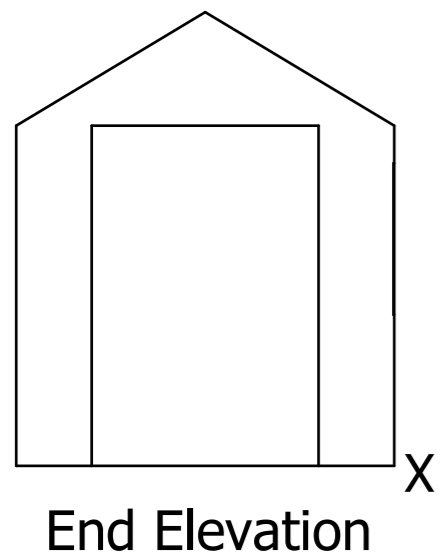
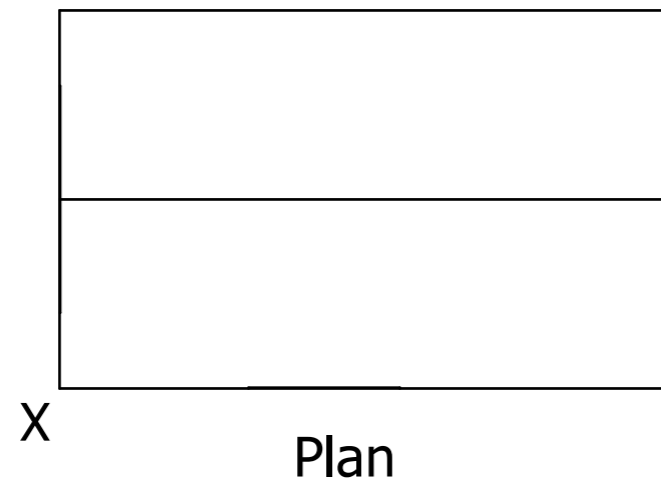
|                           | Good | N to I |
|---------------------------|------|--------|
| Use of construction lines |      |        |
| Use of outlines           |      |        |
| Correct Proportions       |      |        |
| Quality of Sketching      |      |        |

|                   |      |                   |             |                |  |
|-------------------|------|-------------------|-------------|----------------|--|
| Nat4              | Nat5 | Name              | Class       |                |  |
| 3D Unit Outcome 1 |      | Teacher's Comment | Date Issued | Date Completed |  |

N3

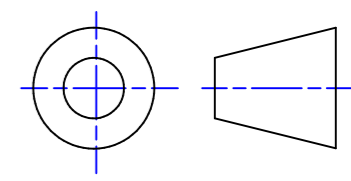
Orthographic views of a garden shed are given below.

Sketch in good proportion a one-point perspective view of the garden shed using the given vanishing point.



|                           | Good | N to I |
|---------------------------|------|--------|
| Use of construction lines |      |        |
| Use of outlines           |      |        |
| Correct Proportions       |      |        |
| Quality of Sketching      |      |        |

|                   |      |                   |             |                |
|-------------------|------|-------------------|-------------|----------------|
| Nat4              | Nat5 | Name              | Class       |                |
| 3D Unit Outcome 1 |      | Teacher's Comment | Date Issued | Date Completed |



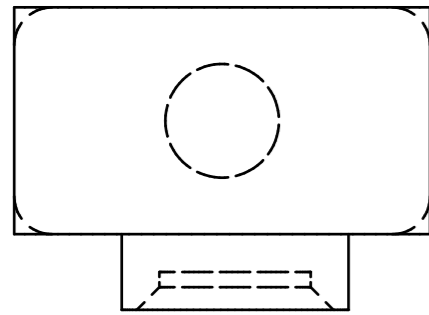


N4

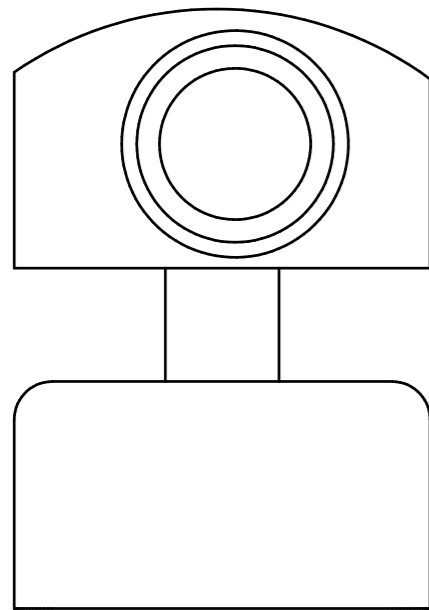
Orthographic views of an WebCam are given below.

Sketch in good proportion a one-point perspective view of the WebCam using the given vanishing point.

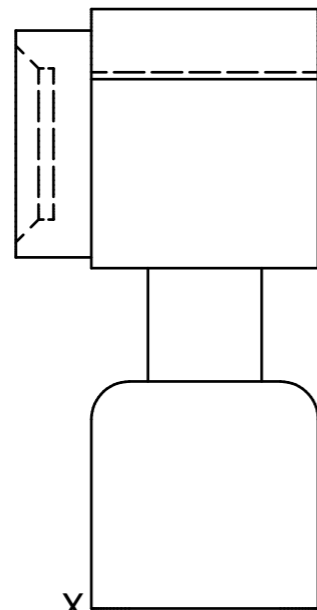
|                           | Good | N to 1 |
|---------------------------|------|--------|
| Use of construction lines |      |        |
| Use of outlines           |      |        |
| Correct Proportions       |      |        |
| Quality of Sketching      |      |        |



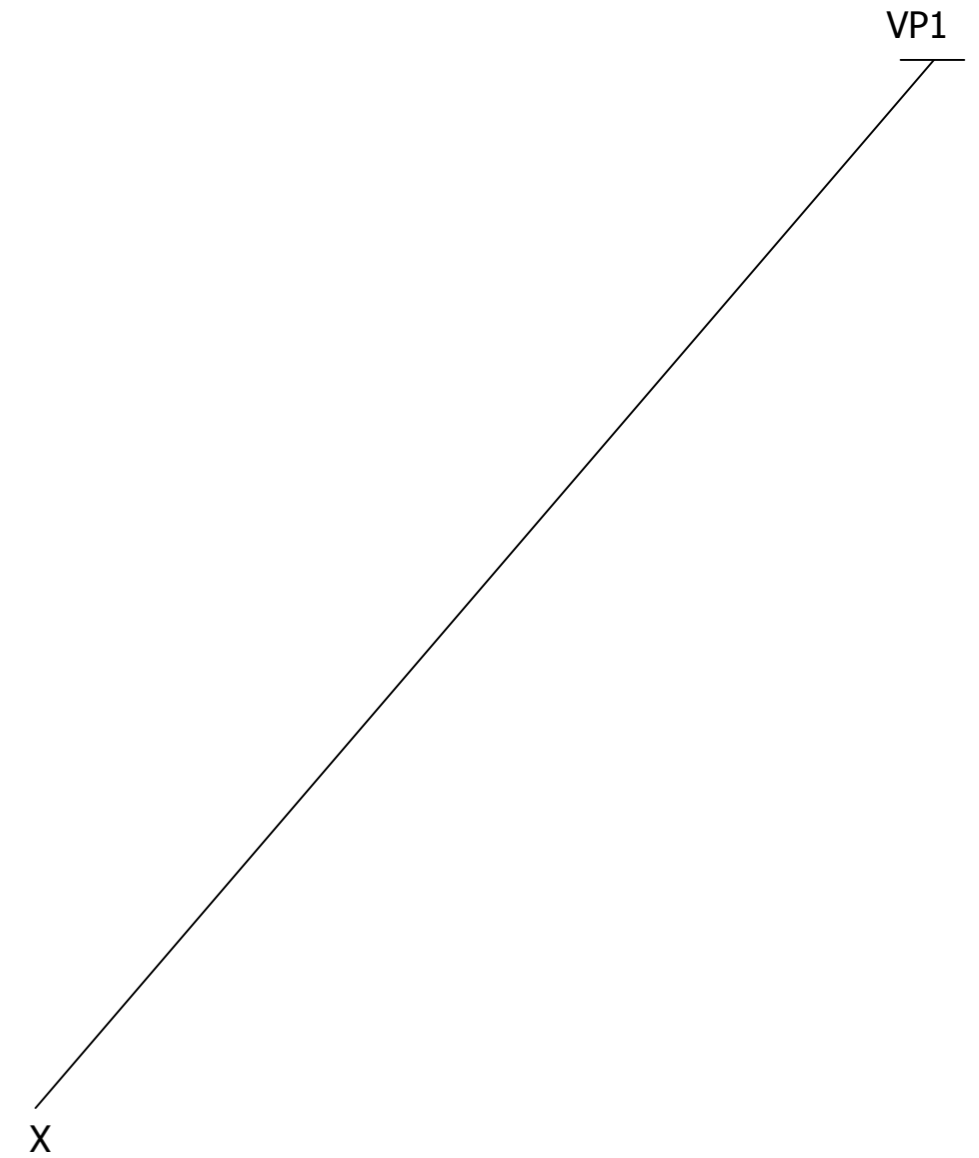
Plan



Elevation



End Elevation

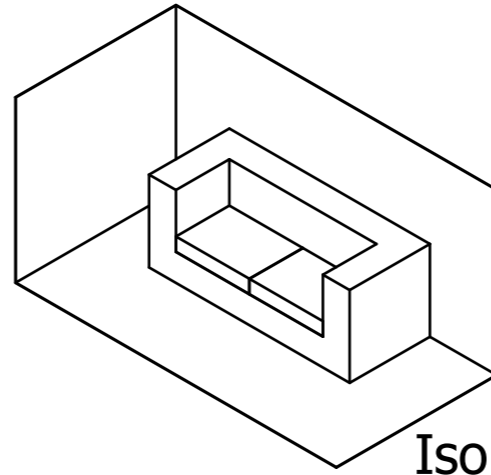


|      |              |                   |             |                |  |
|------|--------------|-------------------|-------------|----------------|--|
| Nat4 | Nat5         | Name              | Class       |                |  |
| N/A  | 3D Outcome 1 | Teacher's Comment | Date Issued | Date Completed |  |

N5

Orthographic views and an isometric view of a sofa are given.

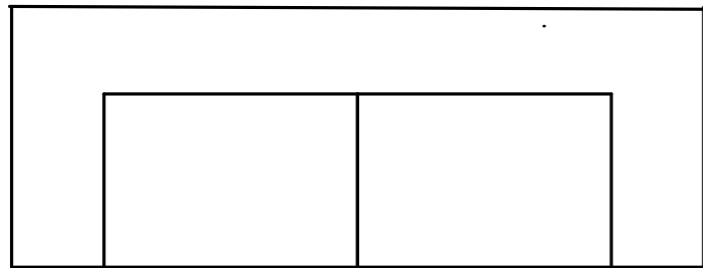
Sketch in good proportion a two-point perspective view of the sofa using the given vanishing points.



Isometric View

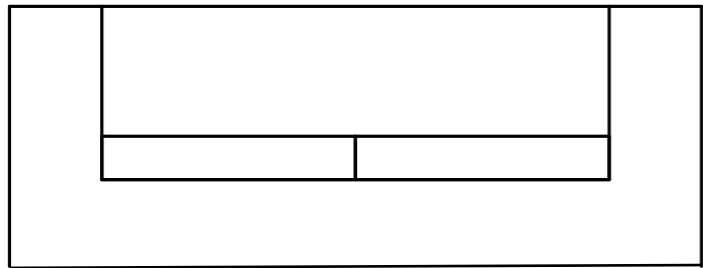
VP1

VP2



Plan

X



Elevation

X

X

|                           | Good | N to 1 |
|---------------------------|------|--------|
| Use of construction lines |      |        |
| Use of outlines           |      |        |
| Correct Proportions       |      |        |
| Quality of Sketching      |      |        |

Nat4

Nat5

Name

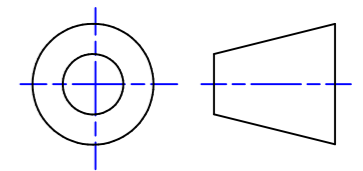
Class

3D Unit Outcome 1

Teacher's Comment

Date Issued

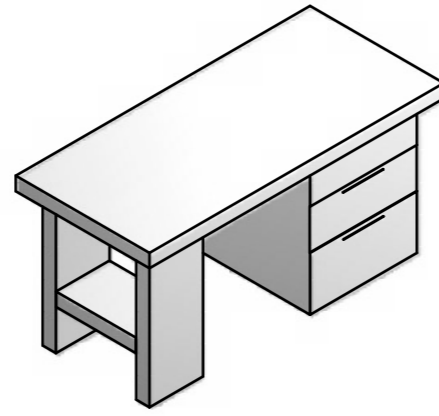
Date Completed



N6

Orthographic views and an isometric view of a Desk are given.

Sketch in good proportion a two-point perspective view of the desk using the given vanishing points.

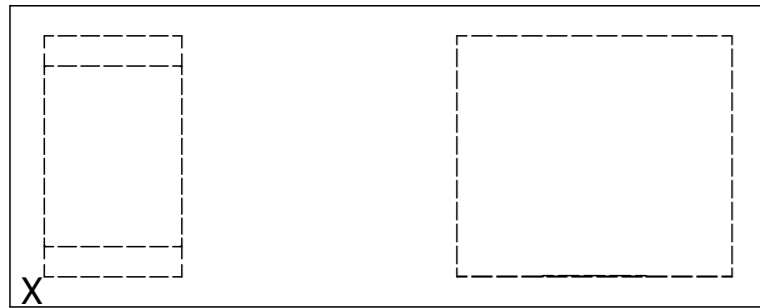


Isometric View

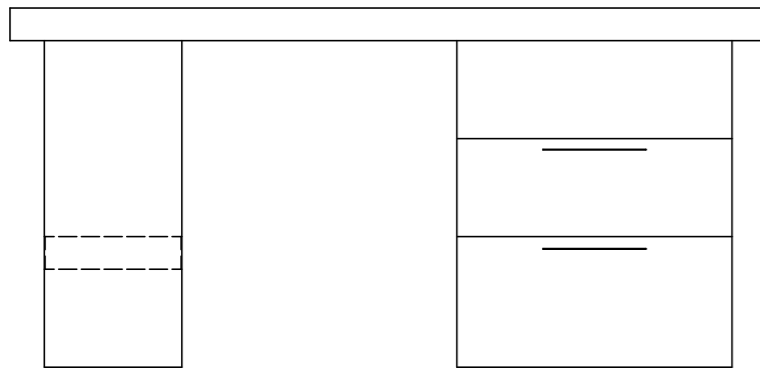
VP1

VP2

X



Plan



Elevation

|                           | Good | N to I |
|---------------------------|------|--------|
| Use of construction lines |      |        |
| Use of outlines           |      |        |
| Correct Proportions       |      |        |
| Quality of Sketching      |      |        |

Nat4

Nat5

Name

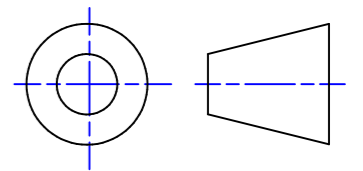
Class

3D Unit Outcome 1

Teacher's Comment

Date Issued

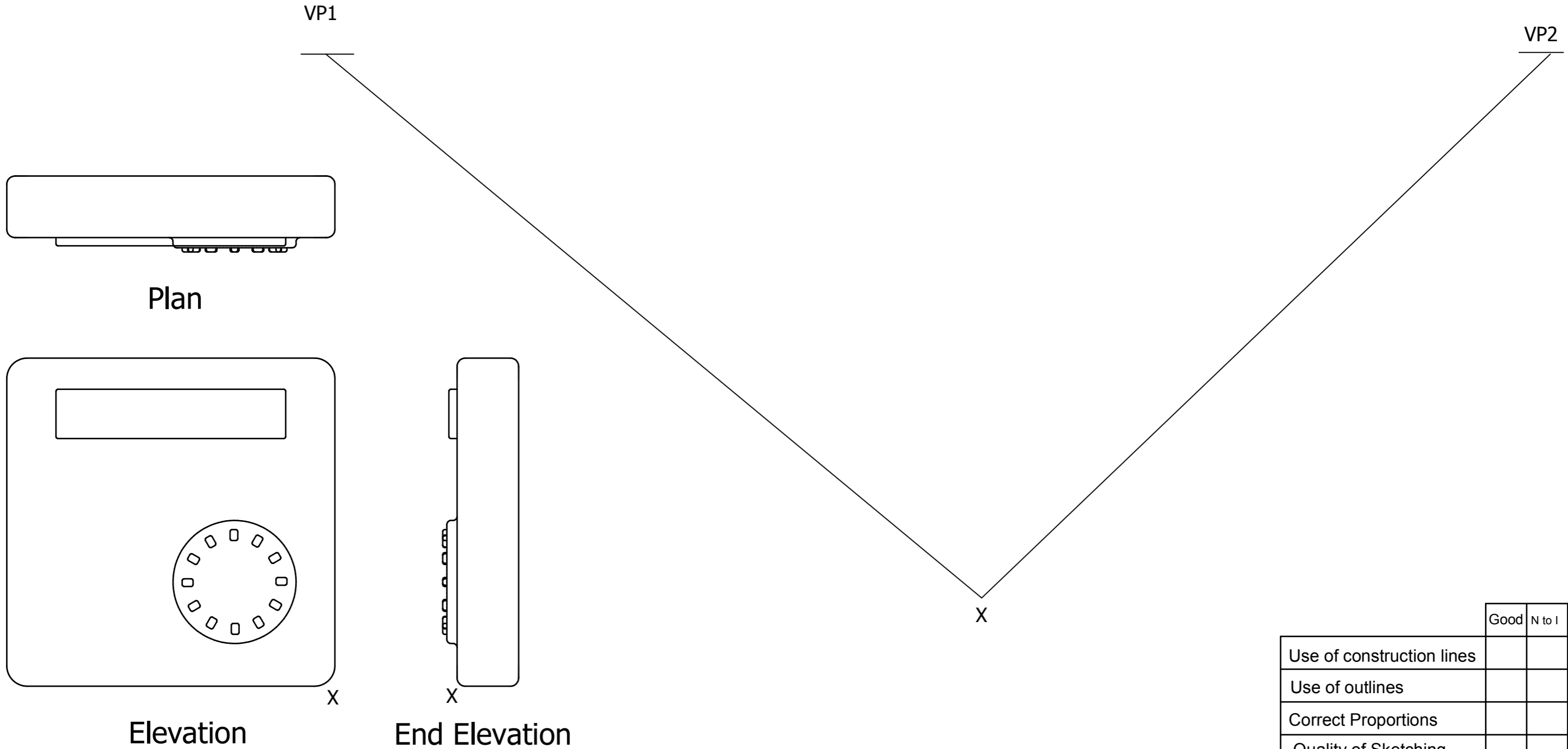
Date Completed



N7

Orthographic views of a Digital radio are given below.

Sketch in good proportion a two-point perspective view of the radio using the given vanishing points.



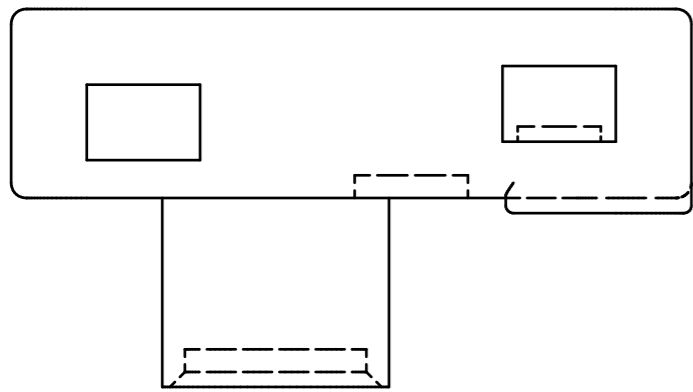
|                           | Good | N to I |
|---------------------------|------|--------|
| Use of construction lines |      |        |
| Use of outlines           |      |        |
| Correct Proportions       |      |        |
| Quality of Sketching      |      |        |

|      |              |                   |             |                |  |
|------|--------------|-------------------|-------------|----------------|--|
| Nat4 | Nat5         | Name              | Class       |                |  |
| N/A  | 3D Outcome 1 | Teacher's Comment | Date Issued | Date Completed |  |

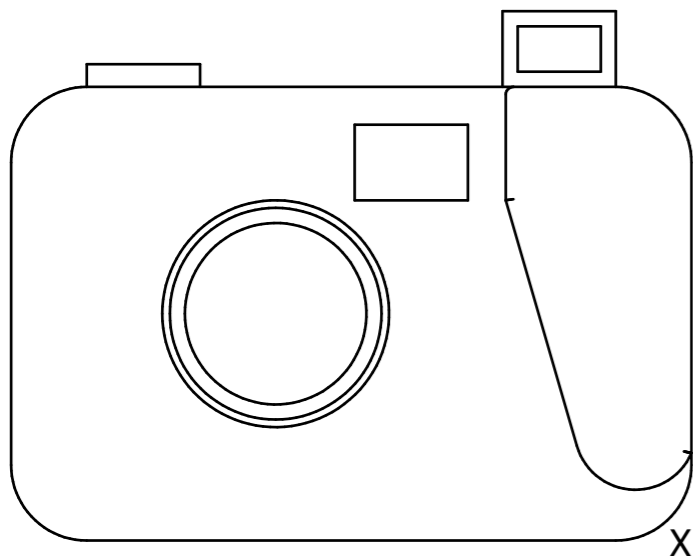
N8

Orthographic views of a digital camera are given below.

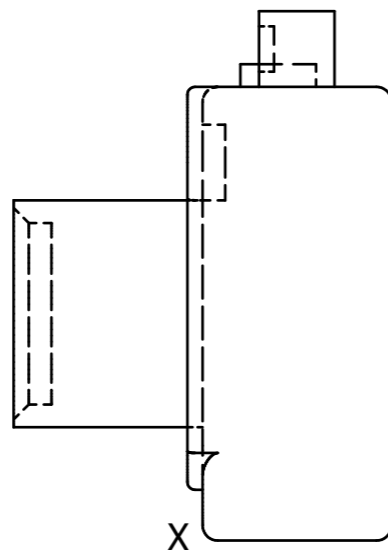
Sketch in good proportion a two-point perspective view of the camera using the given vanishing points.



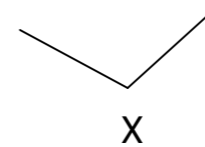
Plan



Elevation



End Elevation



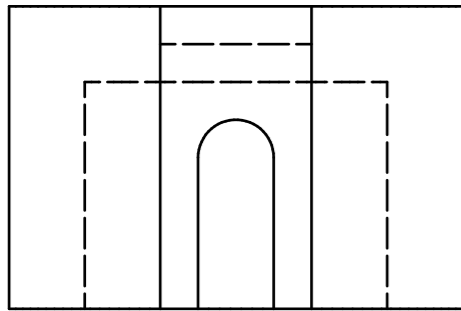
|                           | Good | N to I |
|---------------------------|------|--------|
| Use of construction lines |      |        |
| Use of outlines           |      |        |
| Correct Proportions       |      |        |
| Quality of Sketching      |      |        |

|      |              |                   |             |                |  |
|------|--------------|-------------------|-------------|----------------|--|
| Nat4 | Nat5         | Name              | Class       |                |  |
| N/A  | 3D Outcome 1 | Teacher's Comment | Date Issued | Date Completed |  |

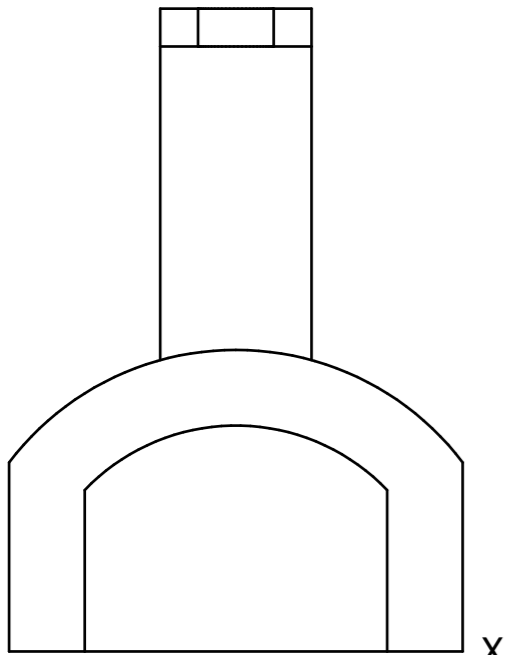
N9

Orthographic views of a Display Stand are given below.

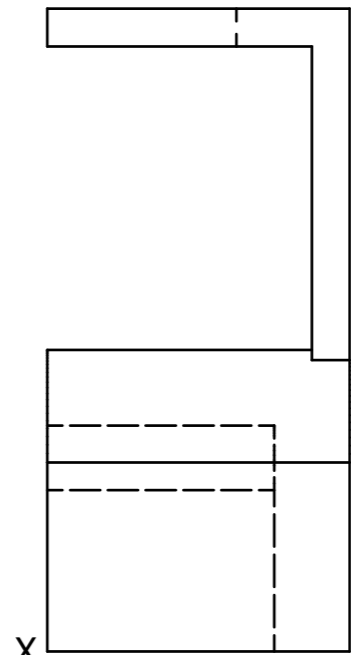
Sketch in good proportion a perspective view of the stand.  
(1 point or 2 point Perspective)



Plan



Elevation



End Elevation

X

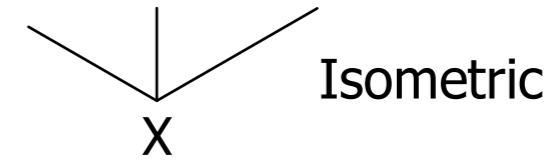
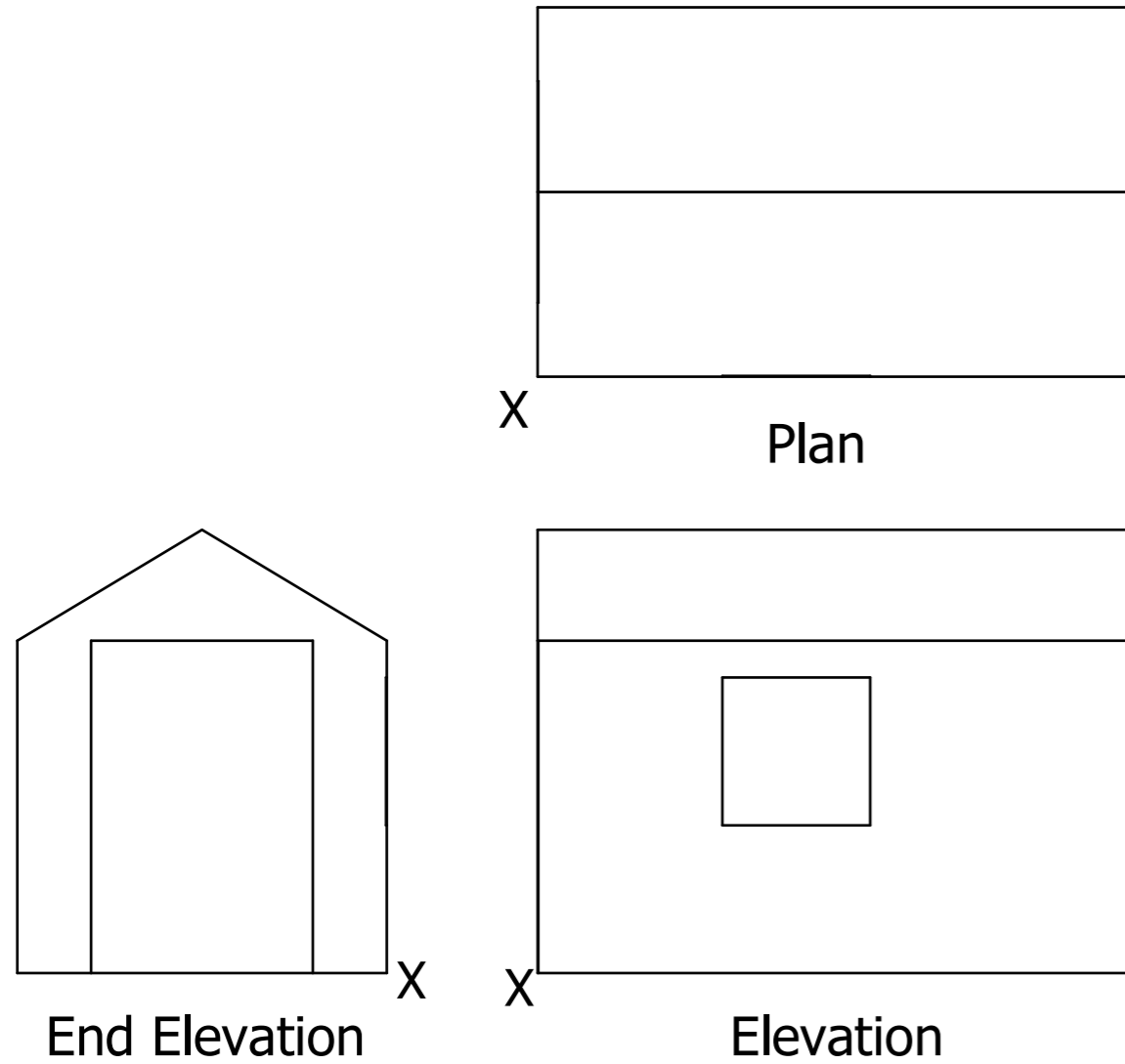
|                           | Good | N to I |
|---------------------------|------|--------|
| Use of construction lines |      |        |
| Use of outlines           |      |        |
| Correct Proportions       |      |        |
| Quality of Sketching      |      |        |

|      |              |                   |             |                |  |
|------|--------------|-------------------|-------------|----------------|--|
| Nat4 | Nat5         | Name              | Class       |                |  |
| N/A  | 3D Outcome 1 | Teacher's Comment | Date Issued | Date Completed |  |

P1

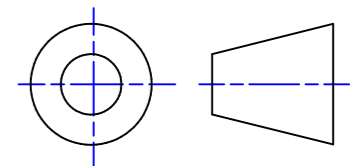
Orthographic views of a garden shed are given below.

Sketch in good proportion an isometric view of the shed.



|                           | Good | N to I |
|---------------------------|------|--------|
| Use of construction lines |      |        |
| Use of outlines           |      |        |
| Correct Proportions       |      |        |
| Quality of Sketching      |      |        |

|      |              |                   |             |                |
|------|--------------|-------------------|-------------|----------------|
| Nat4 | Nat5         | Name              | Class       |                |
| N/A  | 3D Outcome 1 | Teacher's Comment | Date Issued | Date Completed |



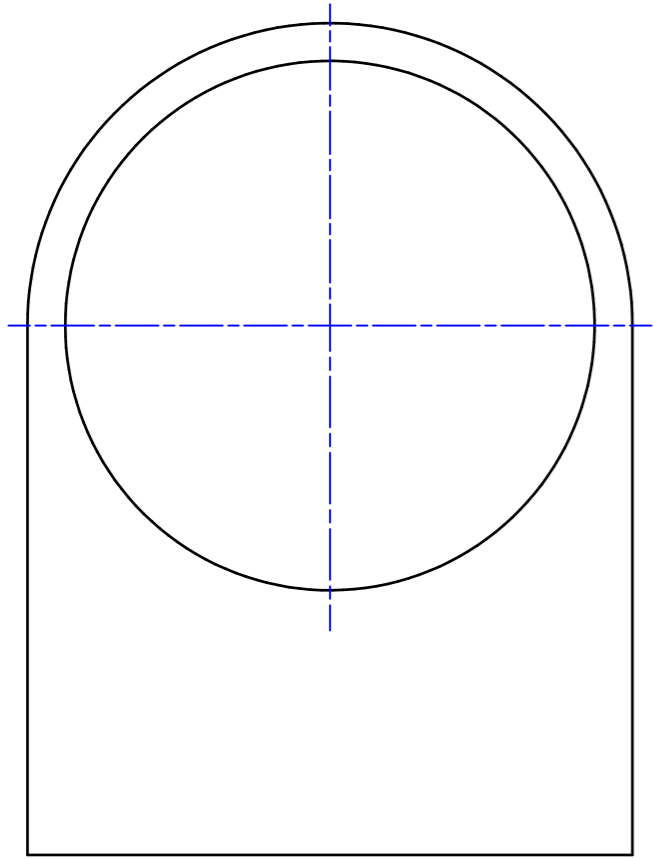
P2

Orthographic views of a small clock are given below.

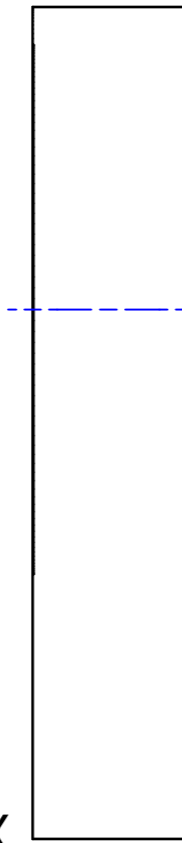
Sketch in good proportion an isometric view of the clock.



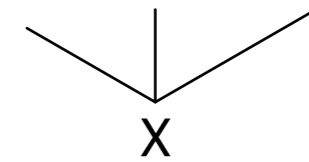
Plan



Elevation



End Elevation



Isometric

|                           | Good | N to I |
|---------------------------|------|--------|
| Use of construction lines |      |        |
| Use of outlines           |      |        |
| Correct Proportions       |      |        |
| Quality of Sketching      |      |        |

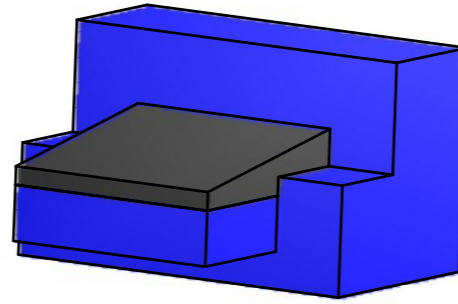
|      |              |                   |             |                |  |
|------|--------------|-------------------|-------------|----------------|--|
| Nat4 | Nat5         | Name              | Class       |                |  |
| N/A  | 3D Outcome 1 | Teacher's Comment | Date Issued | Date Completed |  |



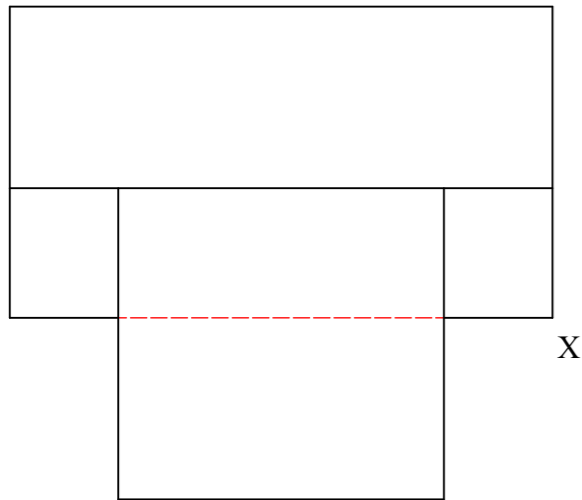
P3

Orthographic views and a pictorial view of a Printer are given.

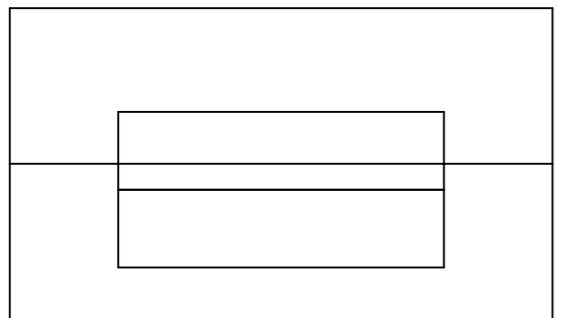
Sketch in good proportion an isometric view of the printer.



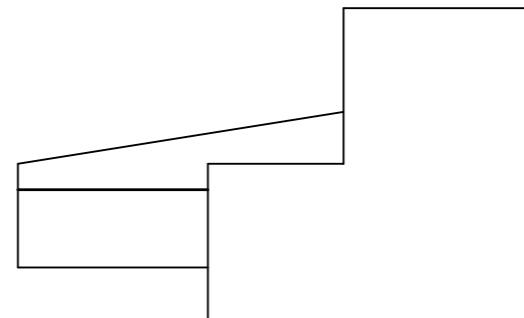
Pictorial view



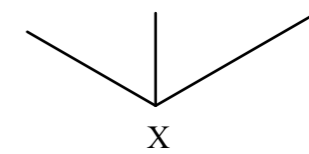
Plan



Elevation



End Elevation



Isometric

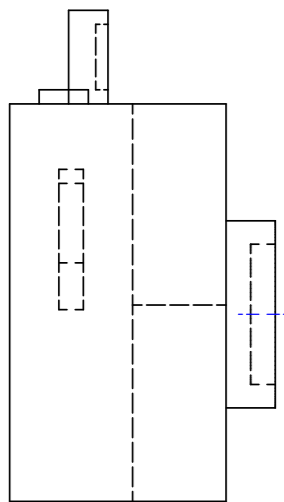
|                           | Good | N to I |
|---------------------------|------|--------|
| Use of construction lines |      |        |
| Use of outlines           |      |        |
| Correct Proportions       |      |        |
| Quality of Sketching      |      |        |

|      |              |                   |             |                |  |
|------|--------------|-------------------|-------------|----------------|--|
| Nat4 | Nat5         | Name              | Class       |                |  |
| N/A  | 3D Outcome 1 | Teacher's Comment | Date Issued | Date Completed |  |

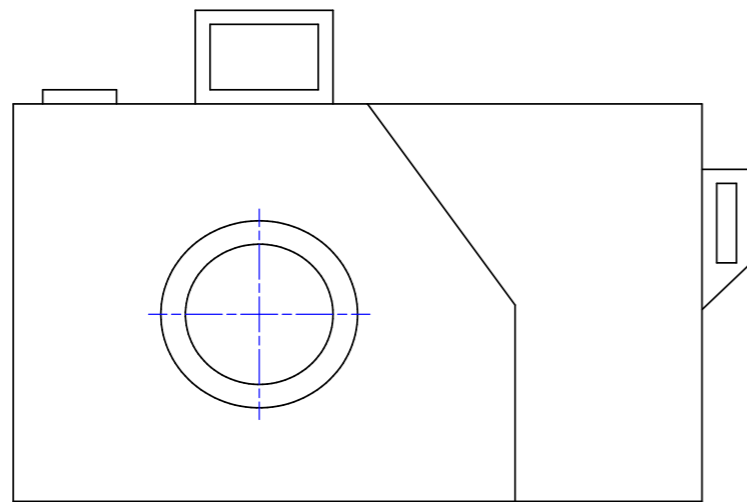
P4

Orthographic views of a camera are given below.

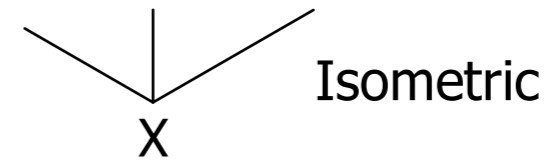
Sketch in good proportion an isometric view of the camera.



End Elevation



Elevation



|                           | Good | N to I |
|---------------------------|------|--------|
| Use of construction lines |      |        |
| Use of outlines           |      |        |
| Correct Proportions       |      |        |
| Quality of Sketching      |      |        |

|      |              |                   |             |                |  |
|------|--------------|-------------------|-------------|----------------|--|
| Nat4 | Nat5         | Name              | Class       |                |  |
| N/A  | 3D Outcome 1 | Teacher's Comment | Date Issued | Date Completed |  |

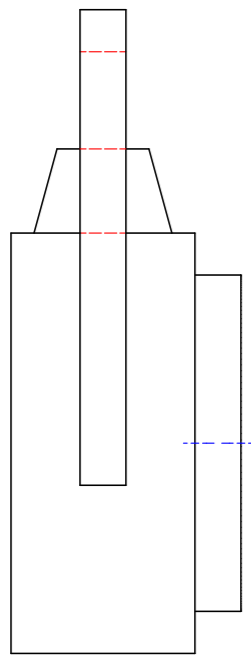
Q1

Orthographic views of a torch are given below.

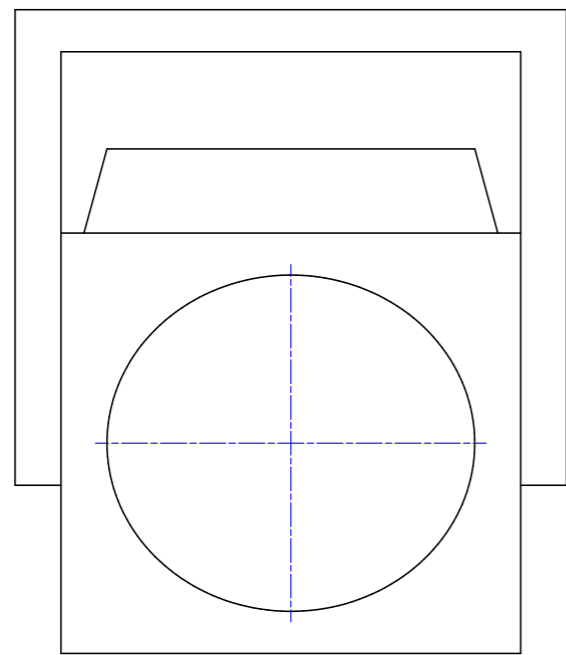
Sketch in good proportion a pictorial view of the torch.  
(Perspective or Isometric)



Plan



End Elevation



Elevation

X

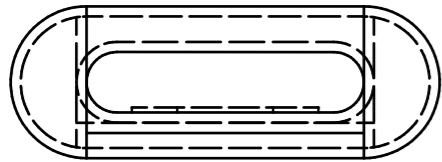
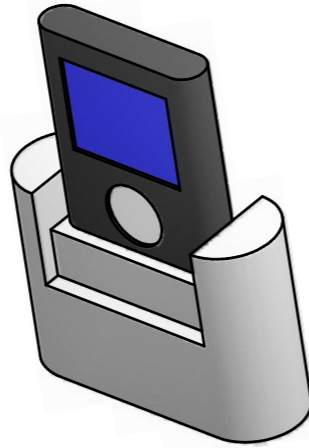
|                           | Good | N to I |
|---------------------------|------|--------|
| Use of construction lines |      |        |
| Use of outlines           |      |        |
| Correct Proportions       |      |        |
| Quality of Sketching      |      |        |

|      |              |                   |             |                |  |
|------|--------------|-------------------|-------------|----------------|--|
| Nat4 | Nat5         | Name              | Class       |                |  |
| N/A  | 3D Outcome 1 | Teacher's Comment | Date Issued | Date Completed |  |

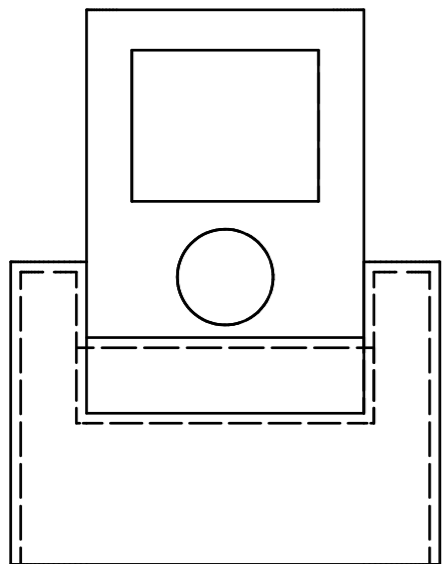
Q2

Orthographic views of an MP3 player and dock are given Below.

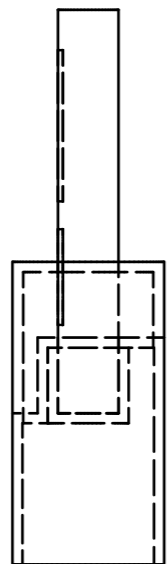
Sketch in good proportion a pictorial view of the MP3 player. (Perspective or Isometric)



Plan



Elevation



End Elevation

|                           | Good | N to I |
|---------------------------|------|--------|
| Use of construction lines |      |        |
| Use of outlines           |      |        |
| Correct Proportions       |      |        |
| Quality of Sketching      |      |        |

|      |              |                   |             |                |  |
|------|--------------|-------------------|-------------|----------------|--|
| Nat4 | Nat5         | Name              | Class       |                |  |
| N/A  | 3D Outcome 1 | Teacher's Comment | Date Issued | Date Completed |  |