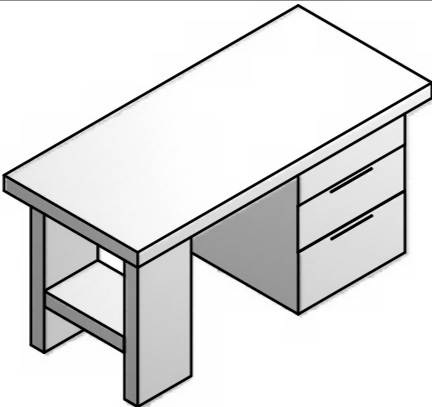


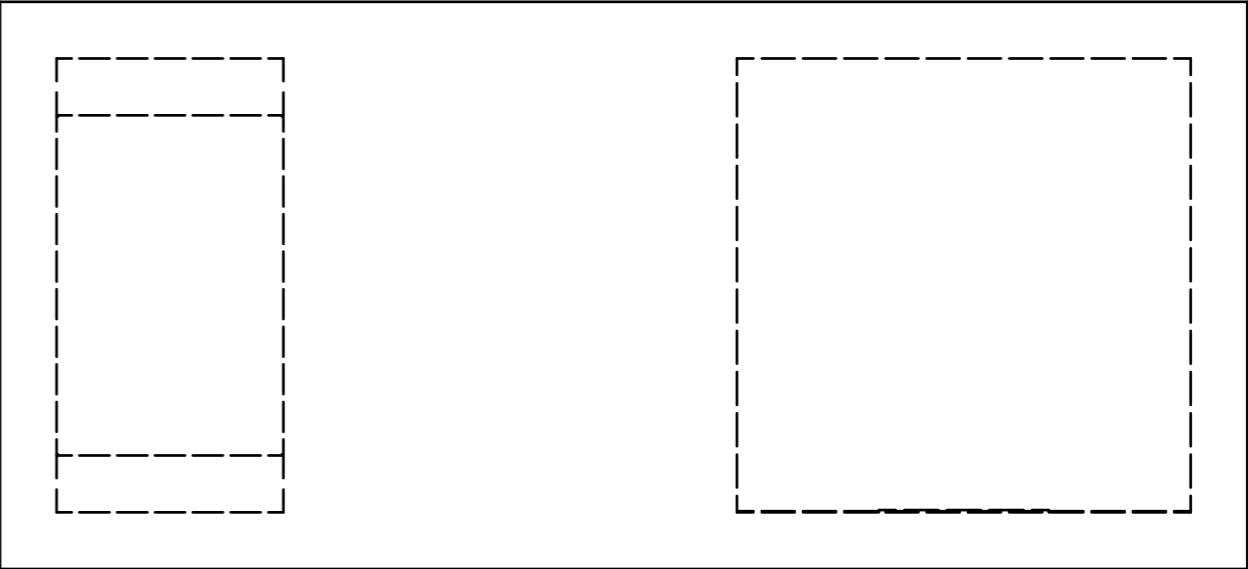
I1  
The plan and elevation of a desk are given.

Draw full size in the positions given:

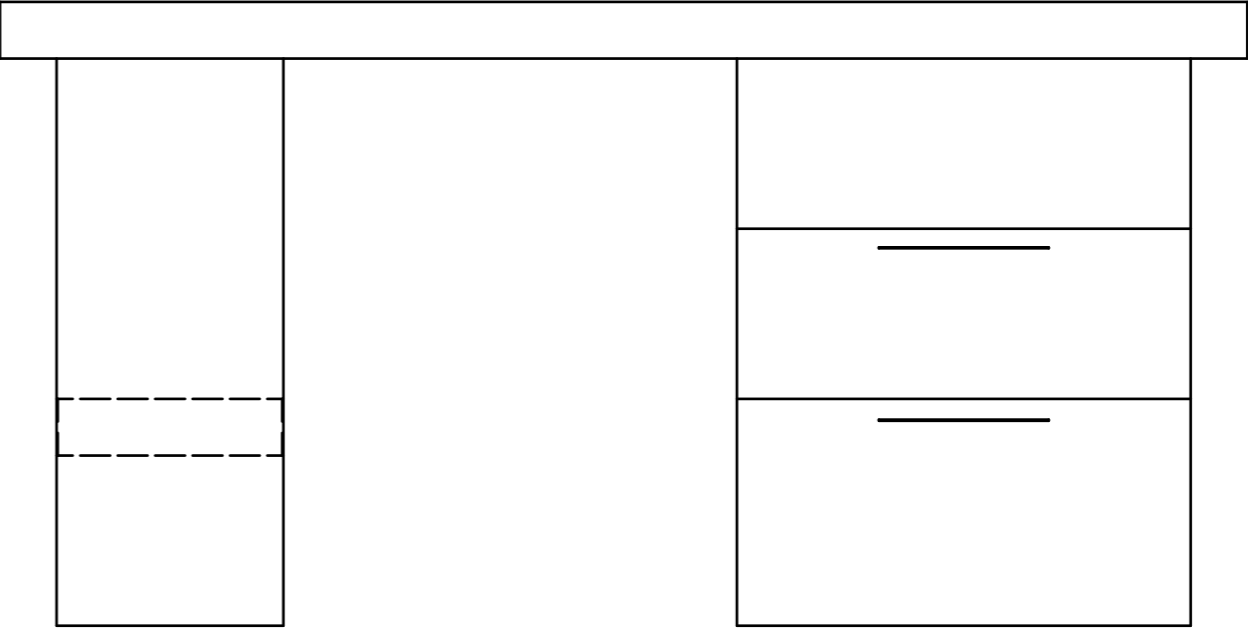
- i. The end elevation of the desk:  
**Show all hidden detail**



	Good	N to I
Use of construction lines		
Use of outlines		
Correct Dimensions		
Draughtmanship		



Plan



Elevation

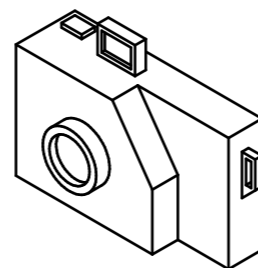
End Elevatation

Nat4	Nat5	Name	Class	
2D Unit Outcome 1	Teacher's Comment	Date Issued	Date Completed	

I2

The elevation and end elevation of a small camera are given.

Draw full size in the position given:



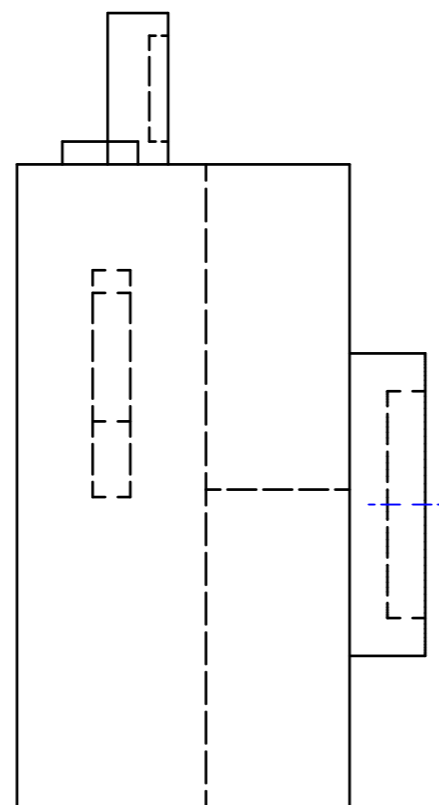
i. The plan of the camera:

**Show all hidden detail**

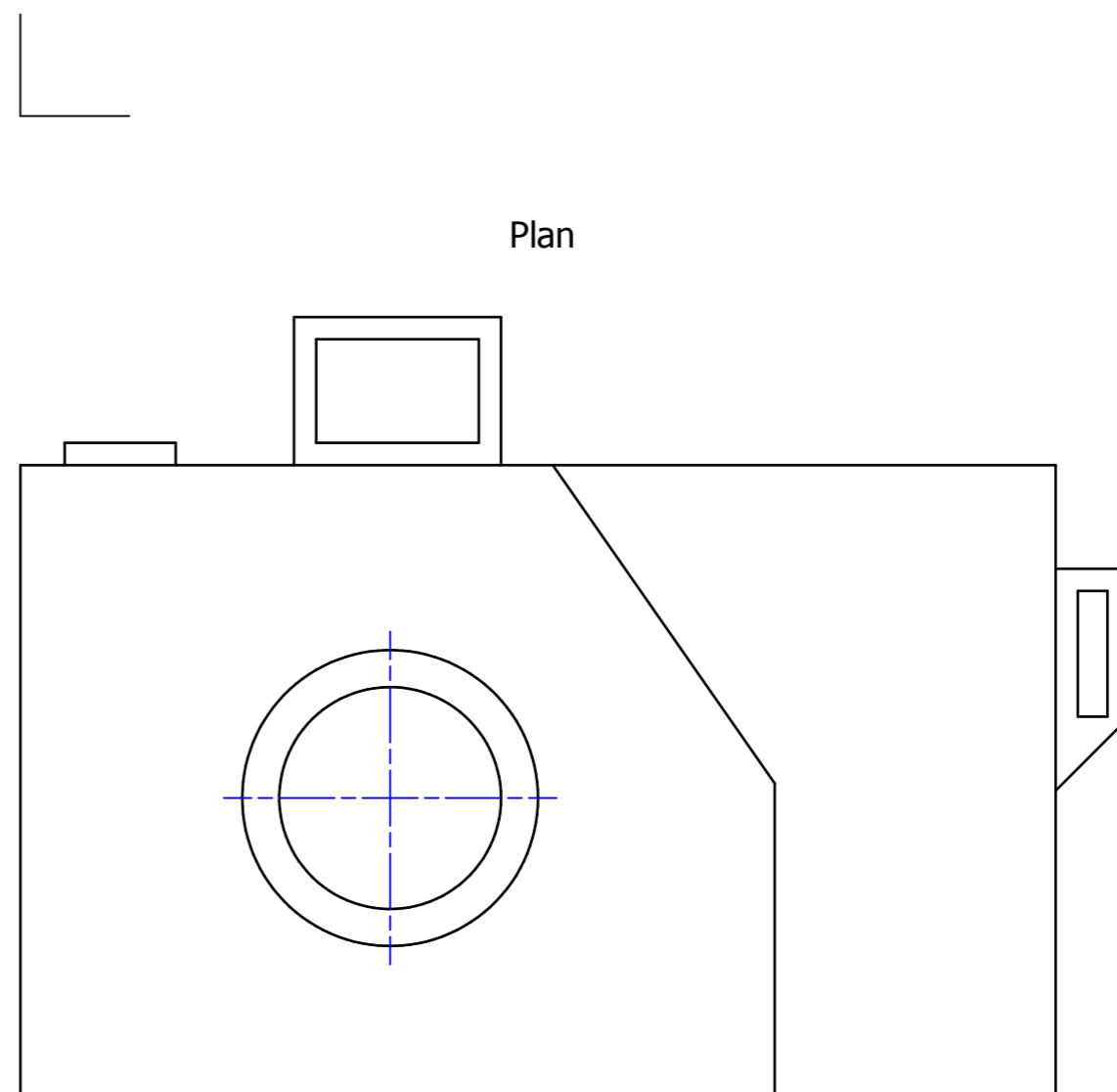
ii. Add the following Dimensions to the elevation using BSI conventions:

- The Diameter of the lens piece
- The height of the body
- The overall length of the flash

	Good	N to I
Use of construction lines		
Use of outlines		
Correct Dimensions		
Draughtmanship		



End Elevation



Elevation

Nat4

Nat5

Name

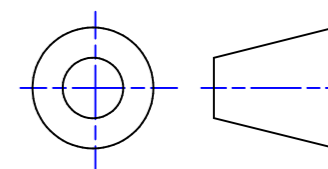
Class

2D Unit Outcome 1

Teacher's Comment

Date Issued

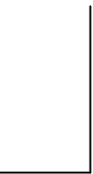
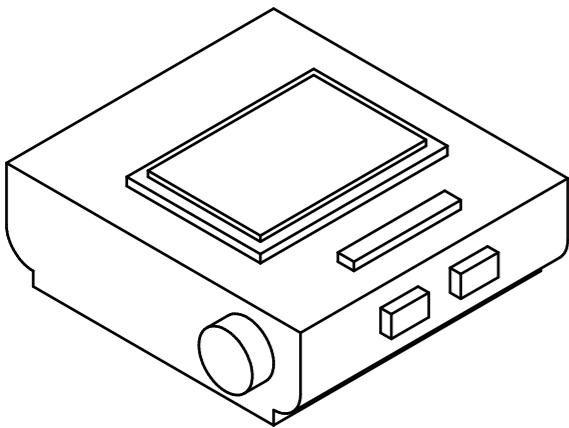
Date Completed



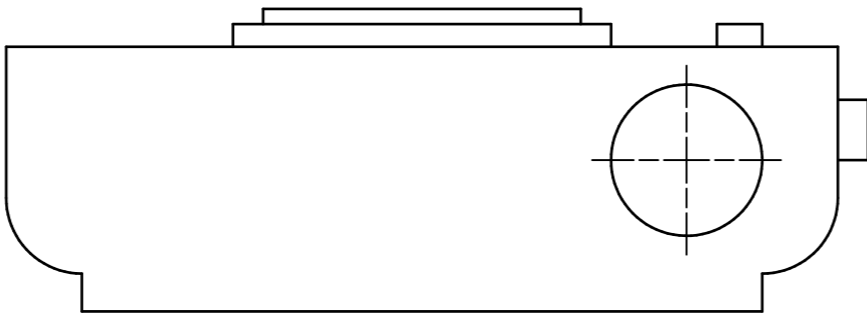
I3  
The elevation and end elevation of a radio alarm are given.

Draw full size in the positions given:

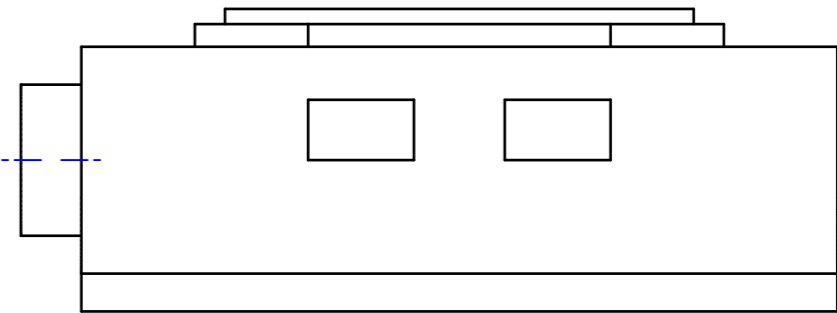
- i. The plan of the radio alarm:  
**Show all hidden detail**
- ii. Add the following Dimensions to the plan using BSI conventions:
  - Overall Length
  - Overall Width



Plan



End Elevation



Elevation

	Good	N to I
Use of construction lines		
Use of outlines		
Correct Dimensions		
Draughtmanship		

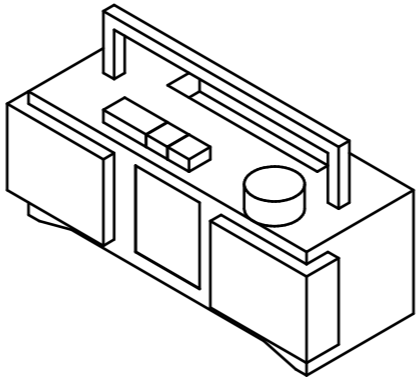
Nat4	Nat5	Name	Class		
2D Unit Outcome 1		Teacher's Comment	Date Issued	Date Completed	

I4

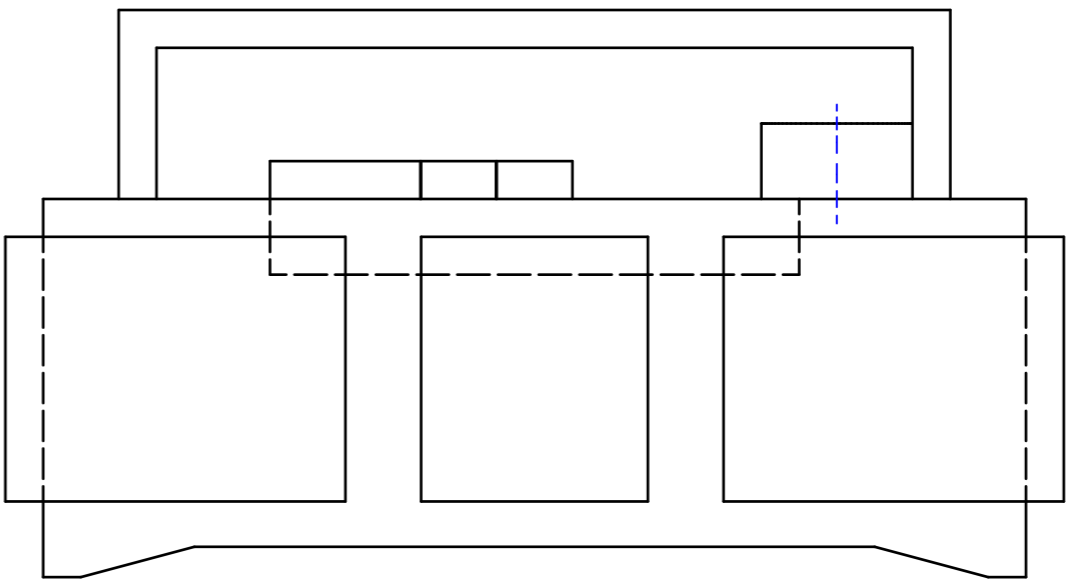
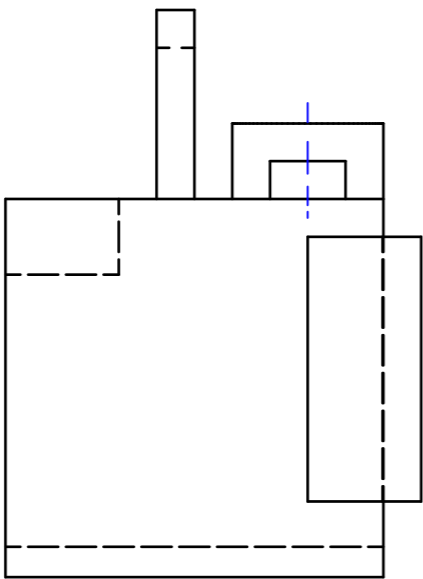
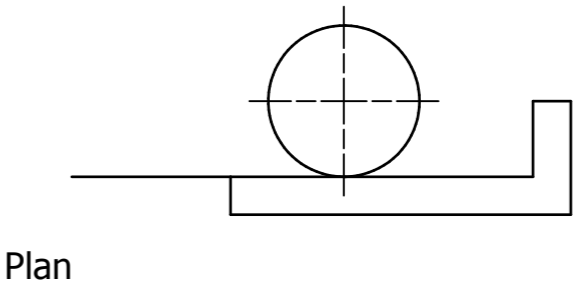
The elevation and end elevation of a stereo are given.

Draw full size in the position given:

- i. The plan of the stereo:  
**Show all hidden detail**
- ii. Add the following Dimensions to the plan using BSI conventions:
  - Overall Length of the handle
  - Overall Height of the handle



	Good	N to I
Use of construction lines		
Use of outlines		
Correct Dimensions		
Draughtmanship		



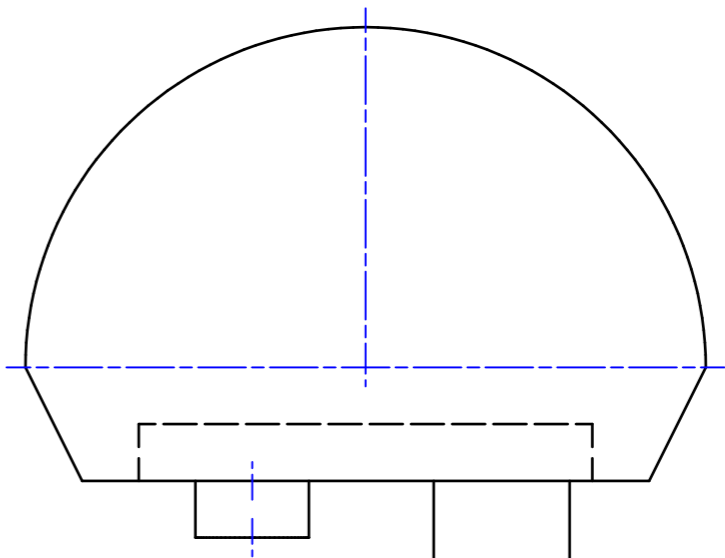
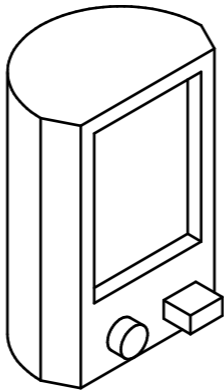
Nat4	Nat5	Name	Class		
2D Unit Outcome 1		Teacher's Comment	Date Issued	Date Completed	

I5  
The plan and end elevation of a small loud speaker are given.

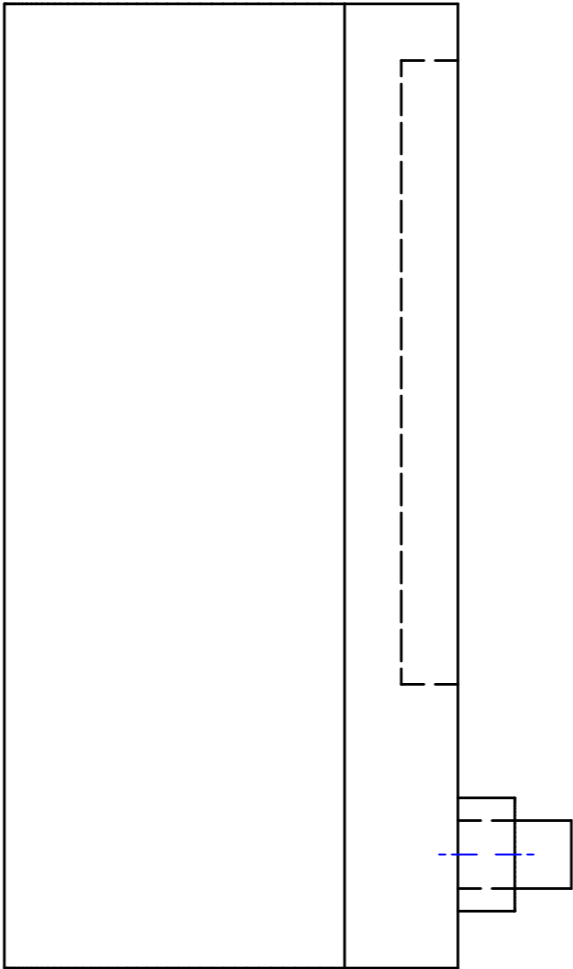
Draw full size in the position given:

i. The elevation of the loud speaker:

	Good	N to I
Use of construction lines		
Use of outlines		
Correct Dimensions		
Draughtmanship		



Plan



End Elevation

Elevation

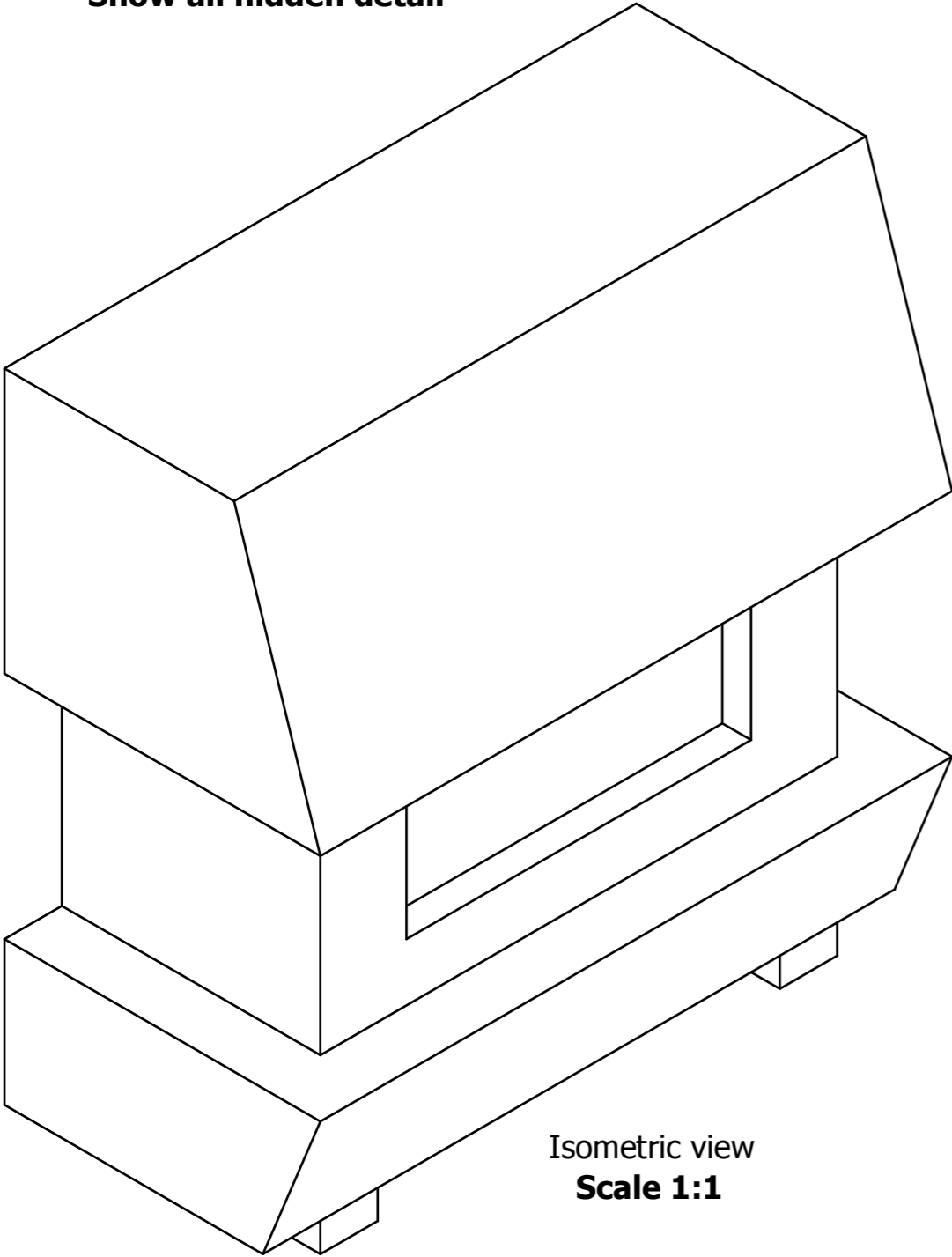
Nat4	Nat5	Name	Class		
N/A	2D Outcome 1	Teacher's Comment	Date Issued	Date Completed	

I6  
The isometric view and end elevation of a gas fire are given.

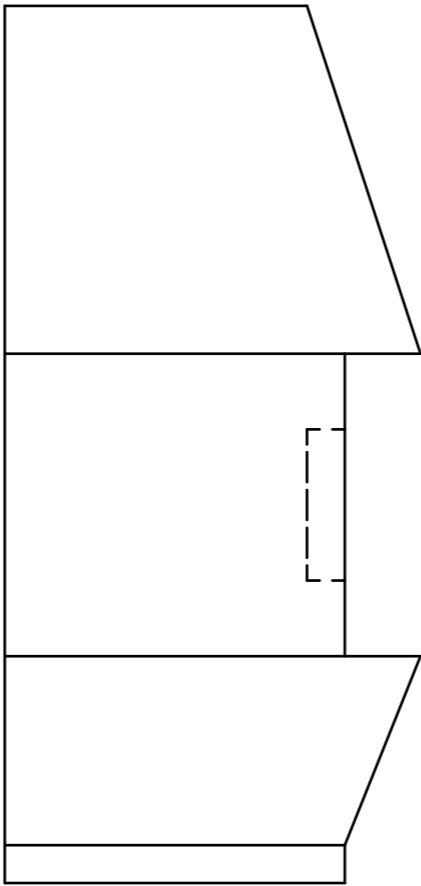
Draw full size in the positions given:

- i. The elevation of the gas fire:
- ii. The plan of the gas fire:  
**Show all hidden detail**

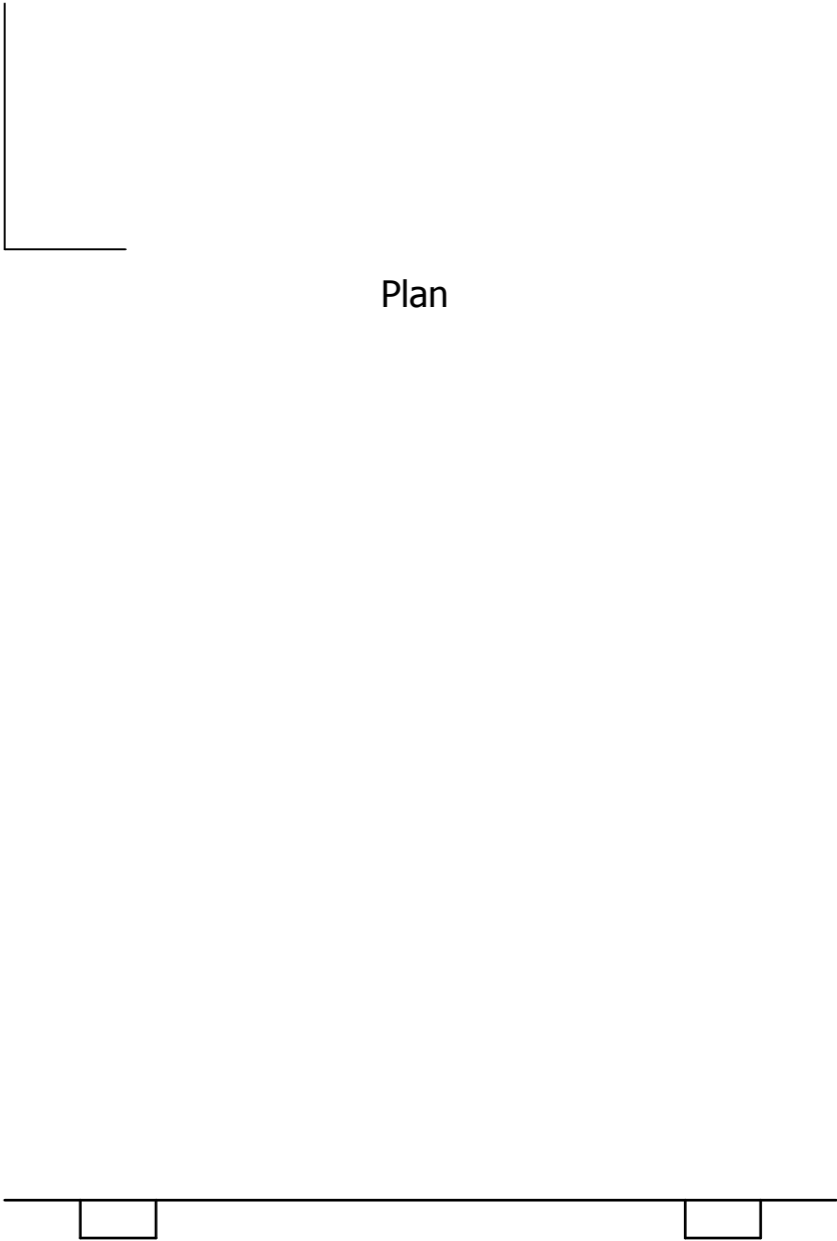
	Good	N to I
Use of construction lines		
Use of outlines		
Correct Dimensions		
Draughtmanship		



Isometric view  
Scale 1:1



End Elevation



Elevation

Nat4	Nat5	Name	Class		
N/A	2D Outcome 1	Teacher's Comment	Date Issued	Date Completed	

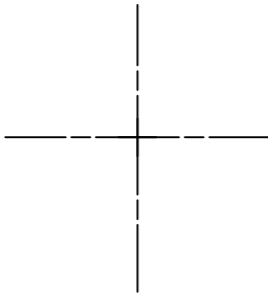
A pictorial view and a part detail of a joystick are given.

Draw full size in the positions given:

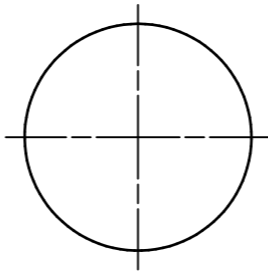
- i. The elevation of the joystick
- ii. The plan of the joystick
- iii. The end elevation of the Joystick

Show all hidden detail

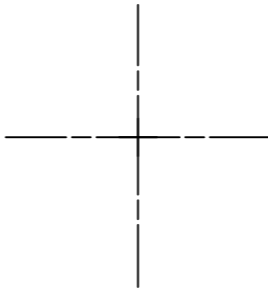
	Good	N to I
Use of construction lines		
Use of outlines		
Correct Dimensions		
Draughtmanship		



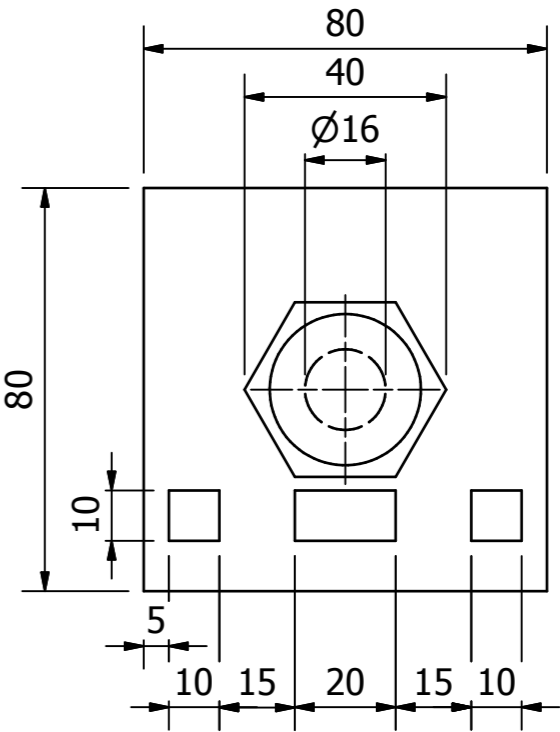
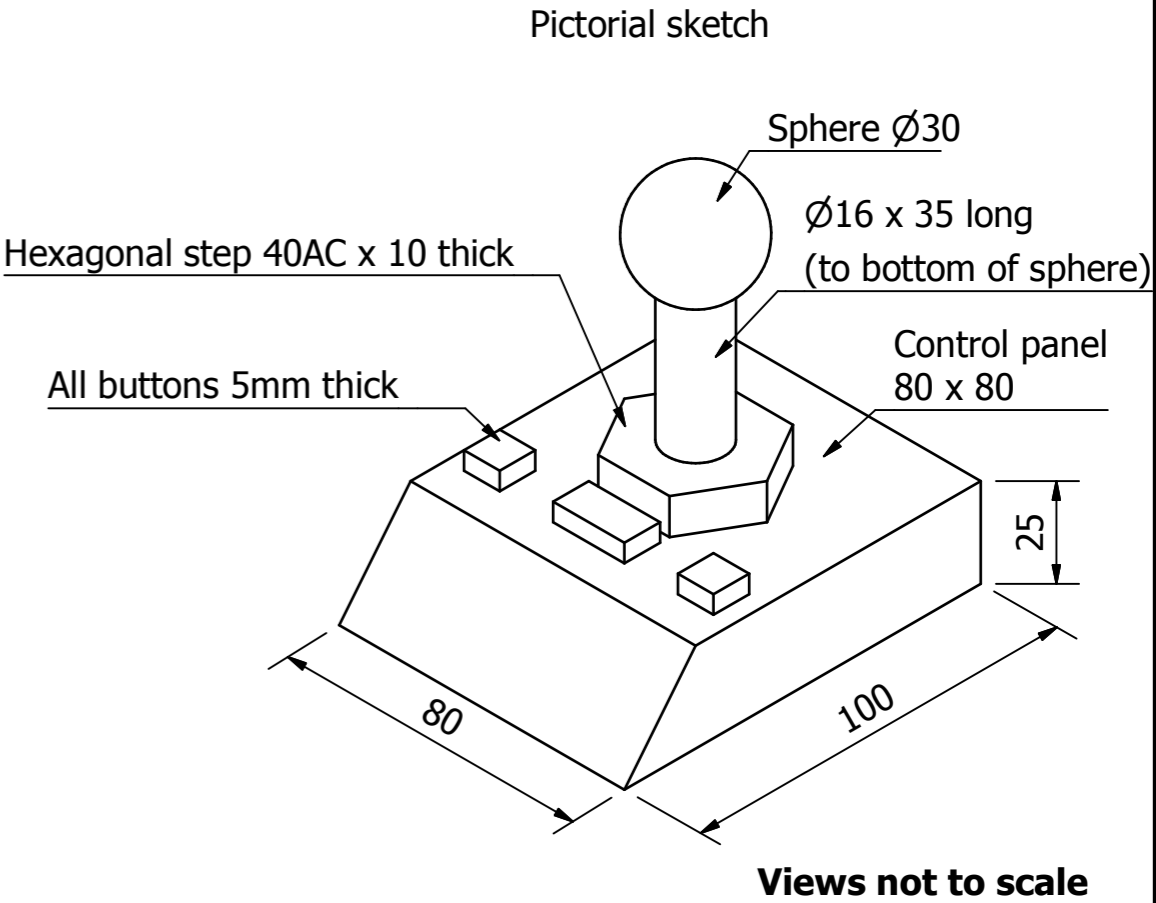
End Elevation



Plan



Elevation



Part detail of control plate

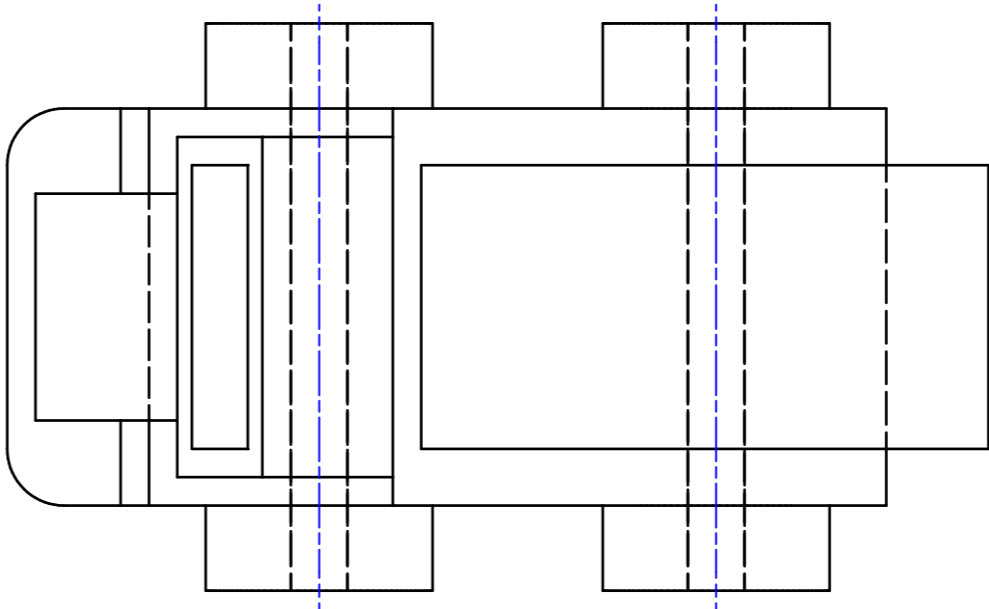
Nat4	Nat5	Name	Class		
N/A	2D Outcome 1	Teacher's Comment	Date Issued	Date Completed	

I8  
The plan and elevation of a toy wooden truck are given.

Draw full size in the positions given:

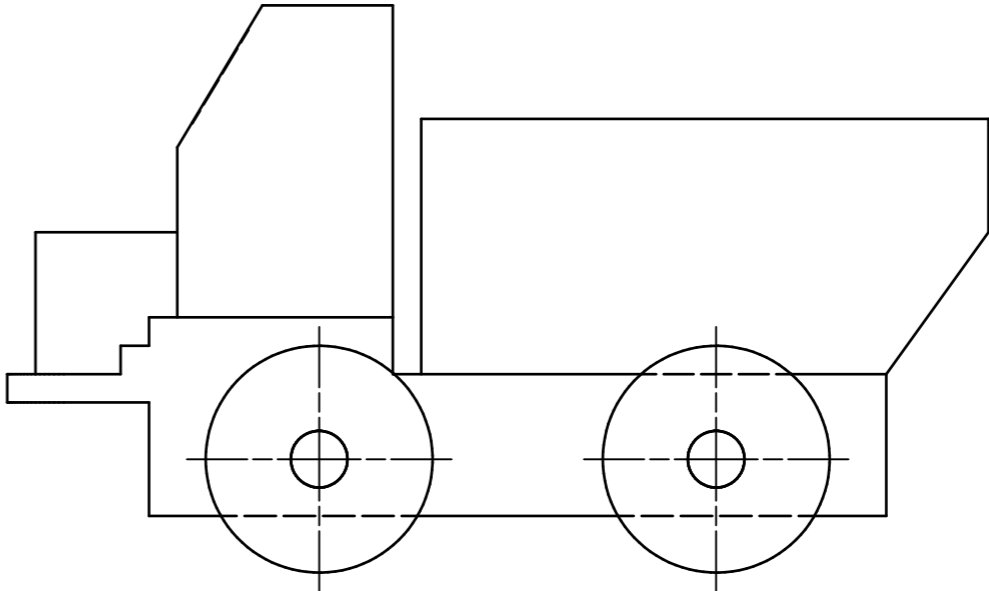
	Good	N to I
Use of construction lines		
Use of outlines		
Correct Dimensions		
Draughtmanship		

- i. The end elevation of the truck:  
**Show all hidden detail**
- ii. The true shape of the screen looking in the given direction:



Plan

True Shape



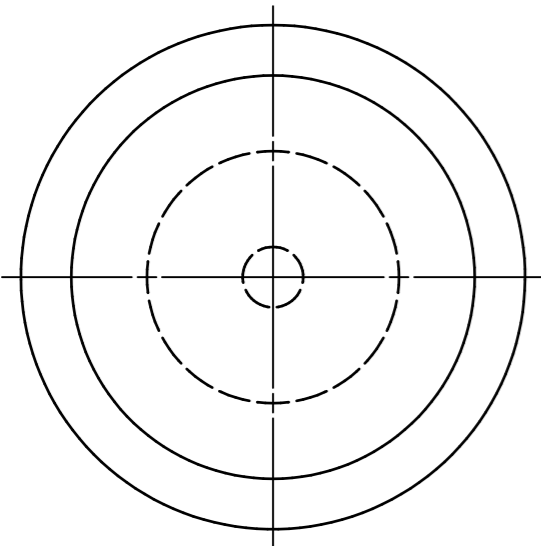
Elevation

End Elevation

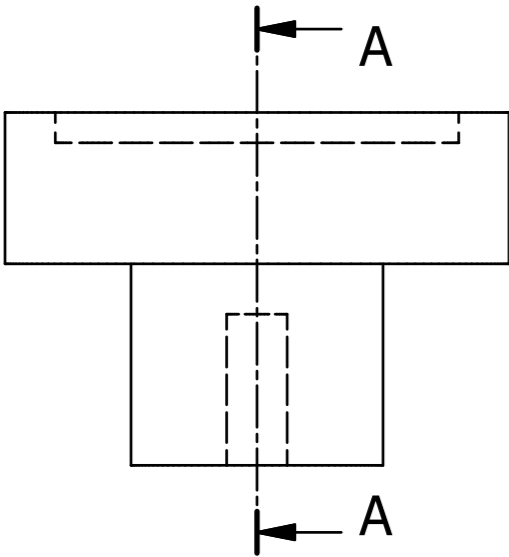
Nat4	Nat5	Name	Class		
N/A	2D Outcome 1	Teacher's Comment	Date Issued	Date Completed	

J1a  
An Elevation and Plan of a door handle are given.  
  
Draw full size using the given dimensions:  
  
i. The Sectional End Elevation on A:A

	Good	N to I
Use of construction lines		
Use of outlines		
Correct Dimensions		
Draughtmanship		



Plan

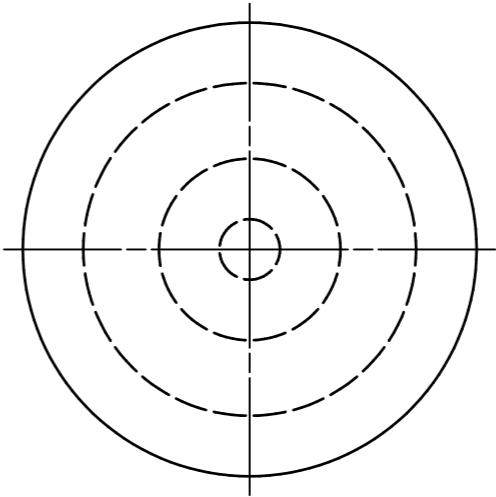


Elevation

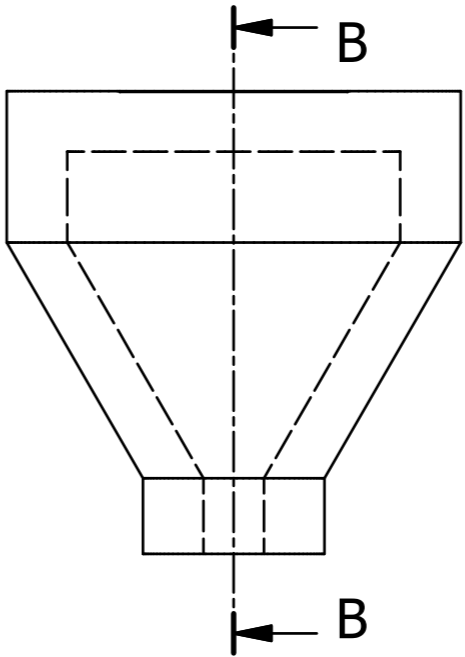
Sectional End Elevation A-A

J1b  
An Elevation and Plan of a gear stick end are given.  
  
Draw full size using the given dimensions:  
  
i. The Sectional End Elevation on B:B

	Good	N to I
Use of construction lines		
Use of outlines		
Correct Dimensions		
Draughtmanship		



Plan



Elevation

Sectional End Elevation B-B

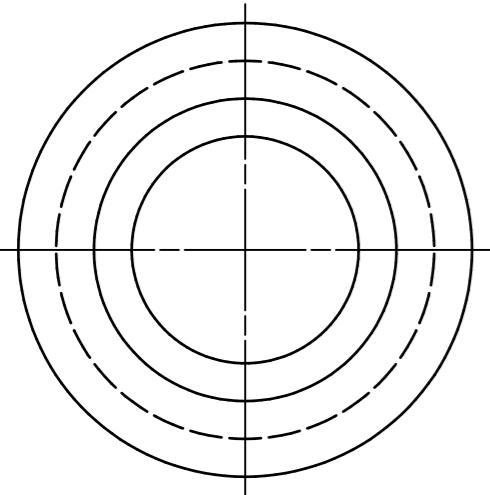
Nat4	Nat5	Name	Class		
2D Unit Outcome 1		Teacher's Comment	Date Issued	Date Completed	

J2a  
An Elevation and Plan of a small container are given.

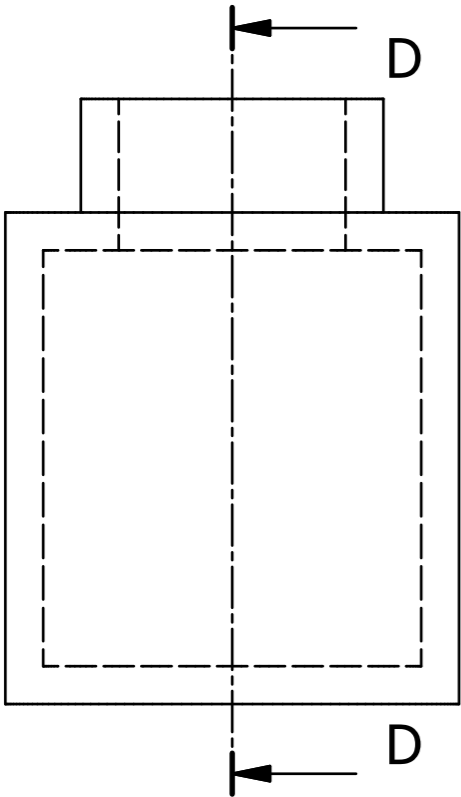
Draw full size using the given dimensions:

i. The Sectional End Elevation on D:D

	Good	N to I
Use of construction lines		
Use of outlines		
Correct Dimensions		
Draughtmanship		



Plan



Elevation

Sectional End Elevation D-D

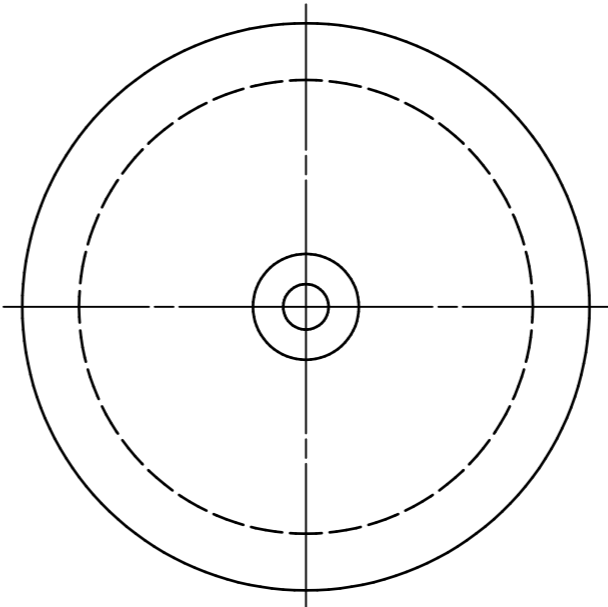


J2b  
An Elevation and Plan of a CD spindle are given.

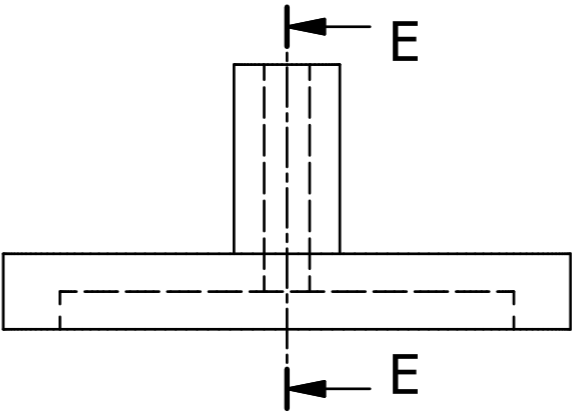
Draw full size using the given dimensions:

i. The Sectional End Elevation on E:E

	Good	N to I
Use of construction lines		
Use of outlines		
Correct Dimensions		
Draughtmanship		



Plan



Elevation

Sectional End Elevation E-E



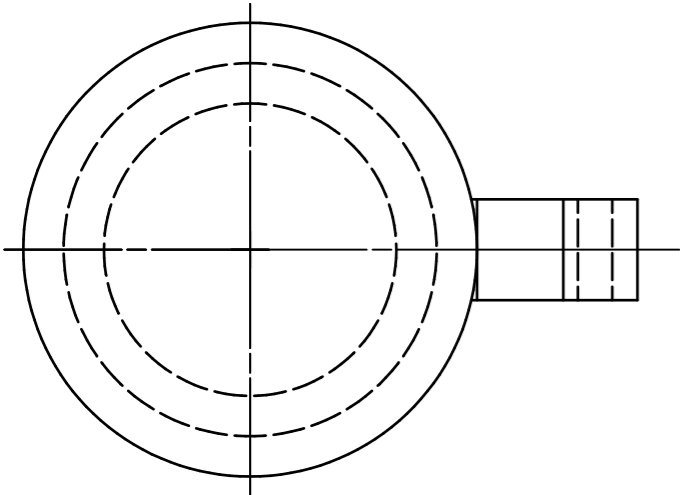
Nat4	Nat5	Name	Class	
2D Unit Outcome 1	Teacher's Comment	Date Issued	Date Completed	

J3a  
An Elevation and Plan of a mug are given.

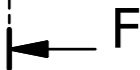
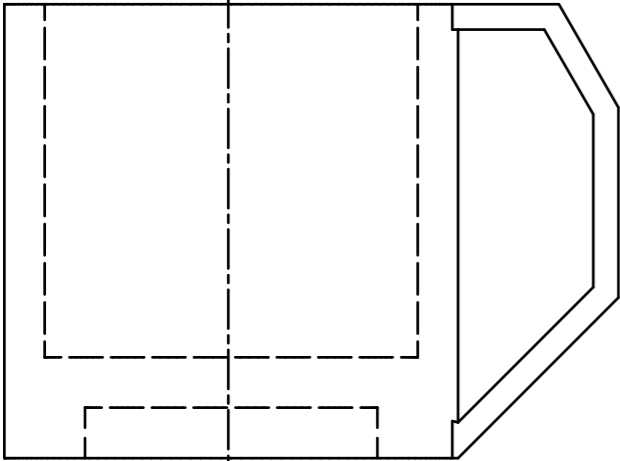
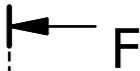
Draw full size using the given dimensions:

i. The Sectional End Elevation on F:F

	Good	N to I
Use of construction lines		
Use of outlines		
Correct Dimensions		
Draughtmanship		



Plan



Elevation

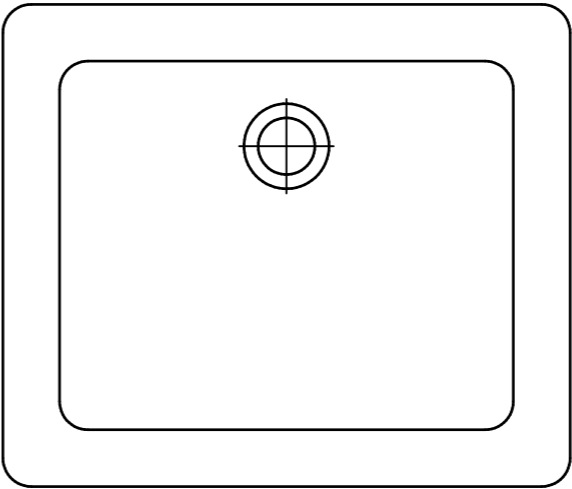
Sectional End Elevation F-F

J3b  
An Elevation and Plan of a Shower tray are given.

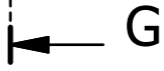
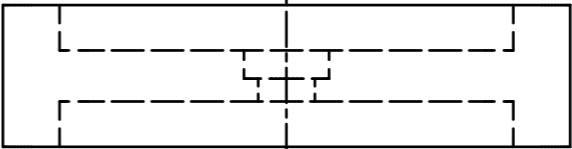
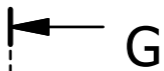
Draw full size using the given dimensions:

i. The Sectional End Elevation on G:G

	Good	N to I
Use of construction lines		
Use of outlines		
Correct Dimensions		
Draughtmanship		



Plan



Elevation

Sectional End Elevation G-G

Nat4

Nat5

Name

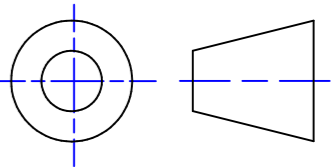
Class

2D Unit Outcome 1

Teacher's Comment

Date Issued

Date Completed



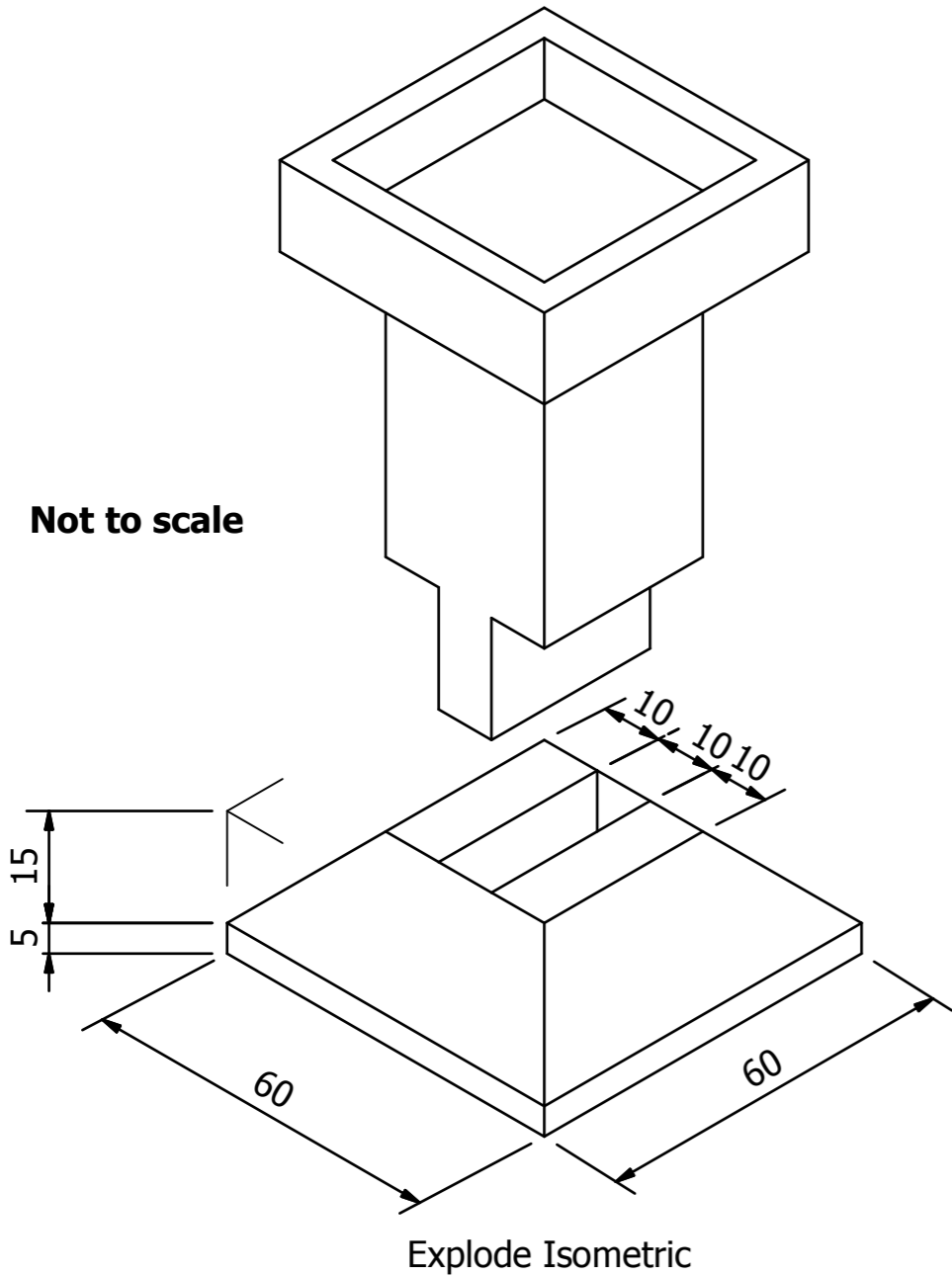
K1  
The exploded isometric view and assembled elevation a small candle stand are given.

Draw **full size** in the positions given:

- i. The end elevation of the assembled candle stick:
- ii. The plan view of the assembled candle stick:

	Good	N to I
Use of construction lines		
Use of outlines		
Correct Dimensions		
Draughtmanship		

Show all hidden detail



Plan

End Elevation

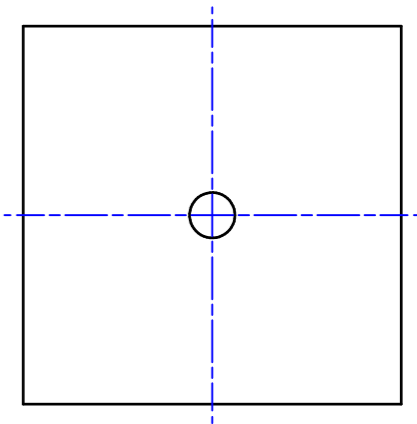
Elevation

Nat4	Nat5	Name	Class		
2D Unit Outcome 1		Teacher's Comment	Date Issued	Date Completed	

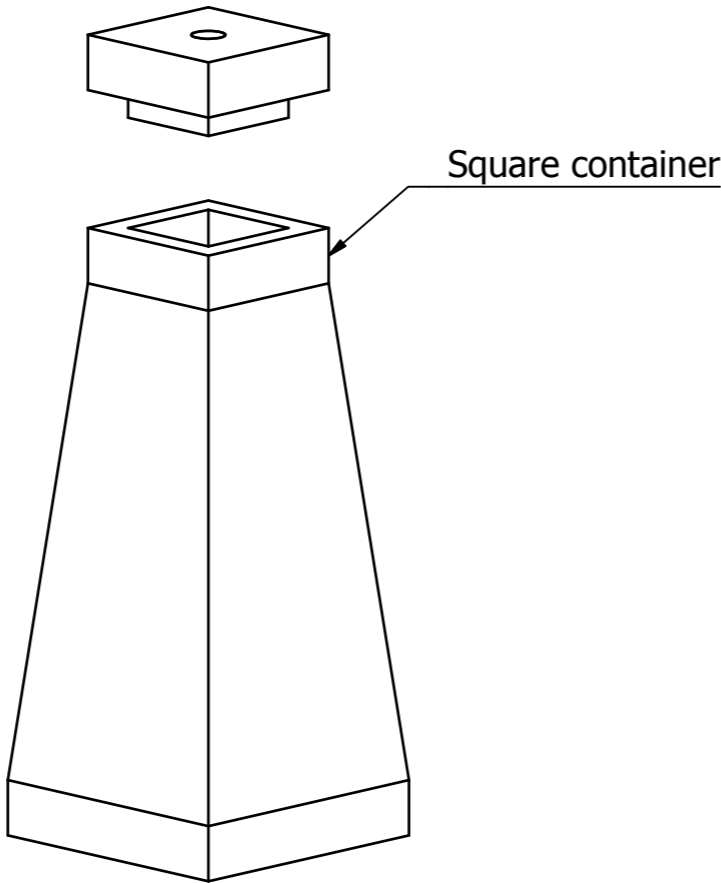
K2  
The end elevation, incomplete plan and a pictorial view of a sugar pourer are given.

Draw full size in the positions given:

- i. The plan view of the sugar pourer:  
**Show all hidden detail**
- ii. The sectional end elevation on **A:A** of the sugar pourer:  
**Do not show hidden detail**

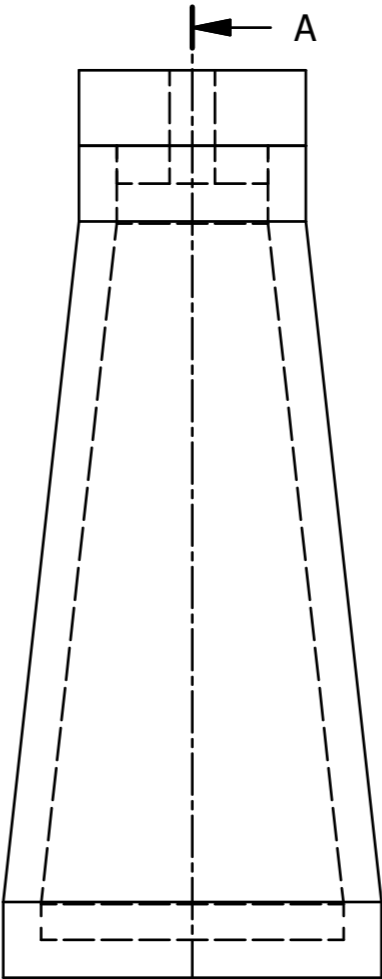


Plan



Pictorial View

**Not to scale**



End Elevation



Sectional Elevation A-A

	Good	N to I
Use of construction lines		
Use of outlines		
Correct Dimensions		
Draughtmanship		

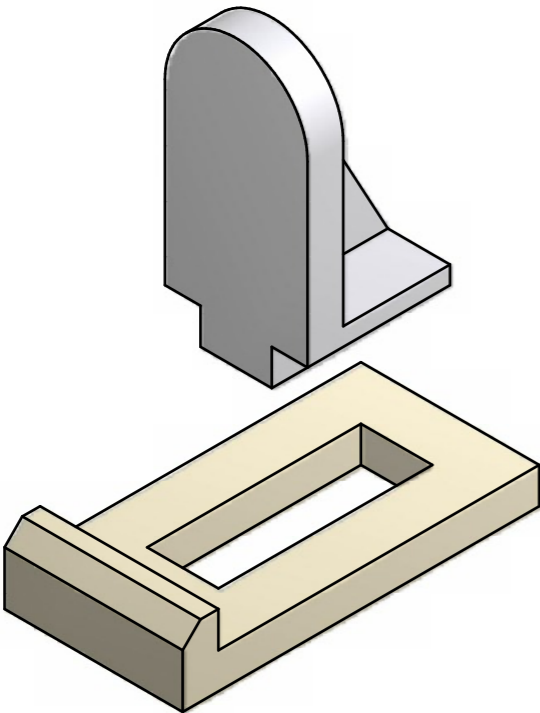
Nat4	Nat5	Name	Class		
2D Unit Outcome 1		Teacher's Comment	Date Issued	Date Completed	

K3  
The plan and end elevation of the assembled parts that make up a small Book display stand are given. A pictorial sketch of the exploded assembly is also shown.

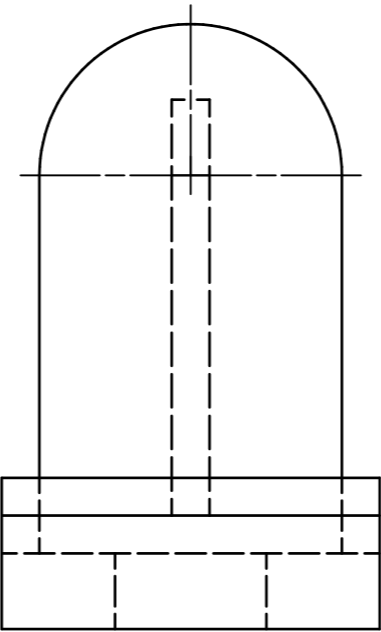
Draw full size in the positions given:

- ii. The sectional elevation on **A:A** of the display stand:  
**Do not show hidden detail**

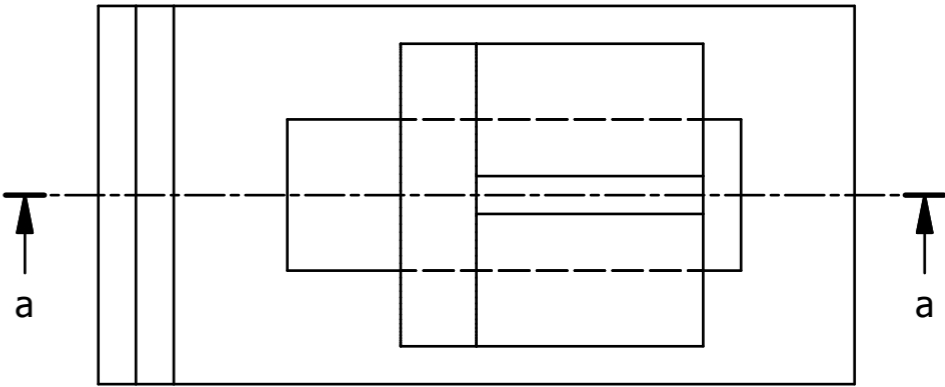
	Good	N to I
Use of construction lines		
Use of outlines		
Correct Dimensions		
Draughtmanship		



Pictorial Sketch



End Elevation



Plan

Sectional Elevation a-a

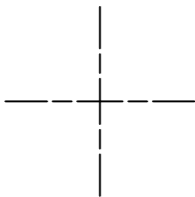
Nat4	Nat5	Name	Class		
N/A	2D Outcome 1	Teacher's Comment	Date Issued	Date Completed	

K4  
Orthographic Views of the component parts that make up a bicycle  
brake pad are given.

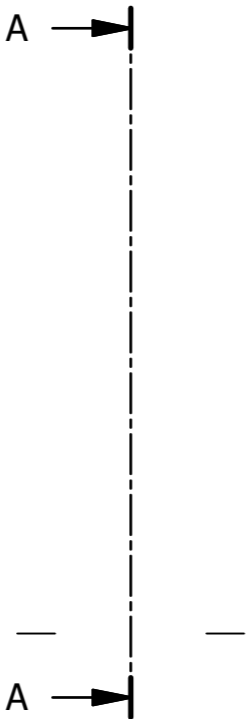
Draw full size in the positions given:

- i. The end elevation of the **assembled** brake pad:  
**Show all hidden detail**
- ii. The plan of the **assembled** brake pad:  
**Show all hidden detail**
- iii. The sectional end elevation on **A:A** of the brake pad:  
**Do not show hidden detail**

	Good	N to I
Use of construction lines		
Use of outlines		
Correct Dimensions		
Draughtmanship		



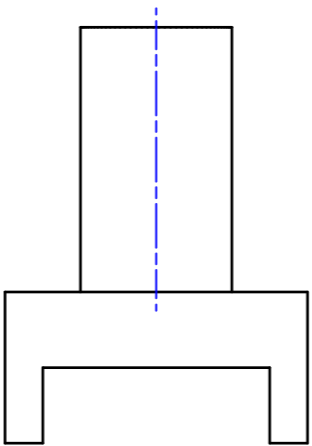
Plan



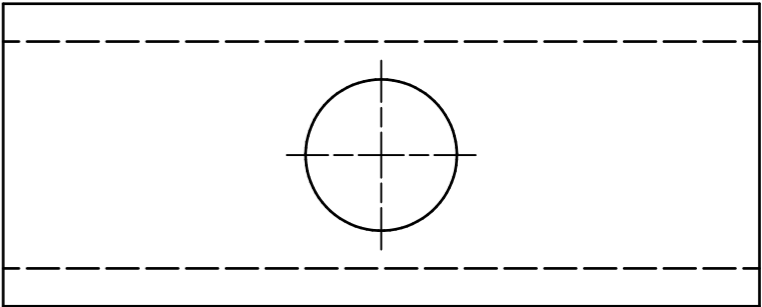
Sectional Elevation A-A

End Elevation

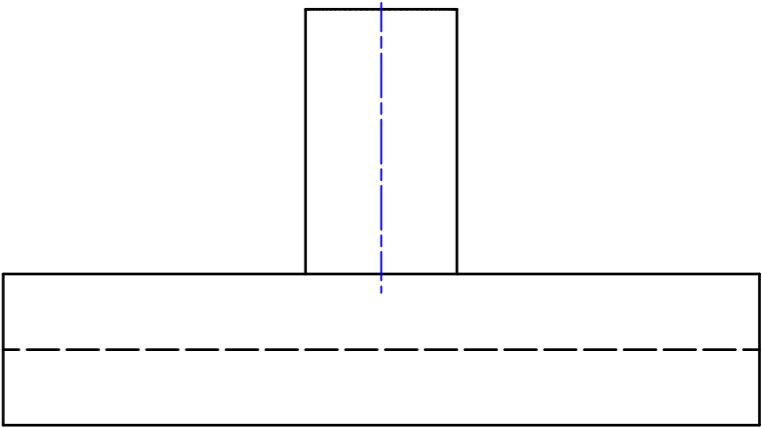
Pad Holder



End Elevation

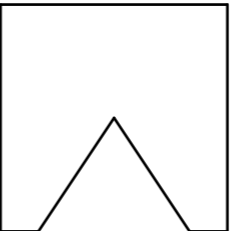


Plan

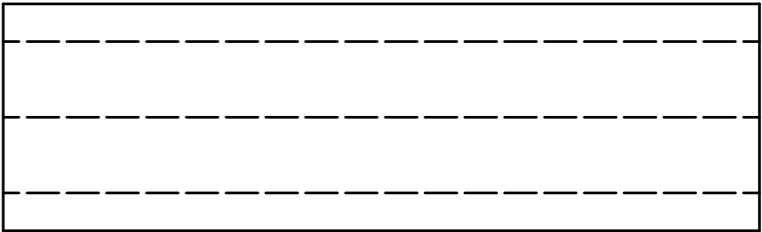


Elevation

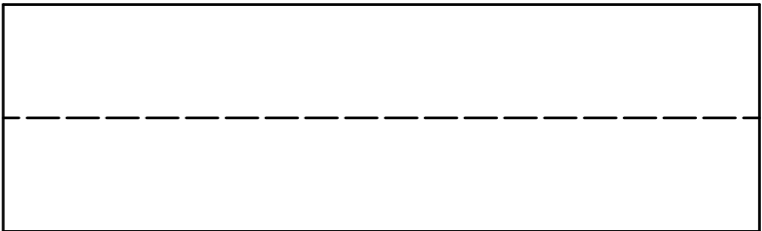
Brake Pad



End Elevation



Plan



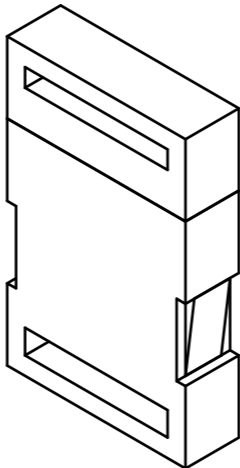
Elevation

Nat4	Nat5	Name	Class		
N/A	2D Outcome 1	Teacher's Comment	Date Issued	Date Completed	

K5  
Orthographic Views of the component parts that make up a belt clasp are given.

Draw full size in the positions given:

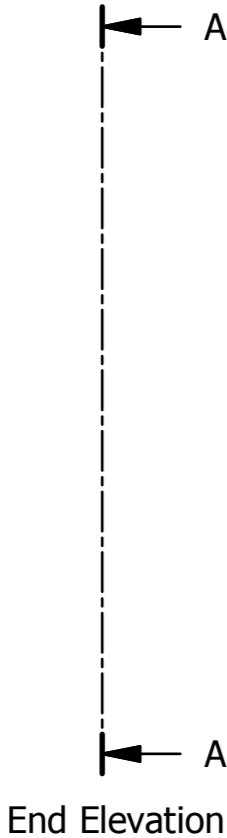
- i. The end elevation of the **assembled** clasp:  
**Show all hidden detail**
- ii. The plan of the **assembled** clasp:  
**Show all hidden detail**
- iii. The sectional elevation on **A:A** of the clasp:  
**Do not show hidden detail**



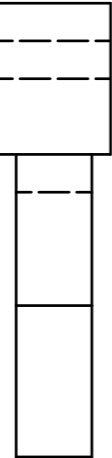
Isometric

	Good	N to I
Use of construction lines		
Use of outlines		
Correct Dimensions		
Draughtmanship		

Plan

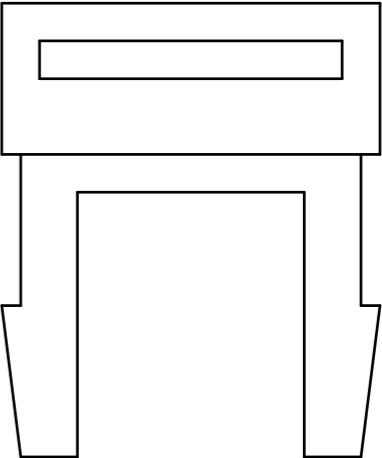


Sectional Elevation A-A



Part A

End Elevation

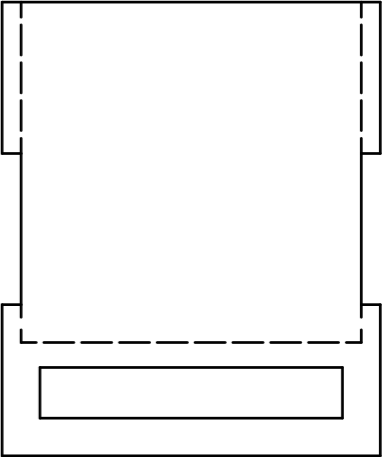


Elevation



Part B

End Elevation



Elevation

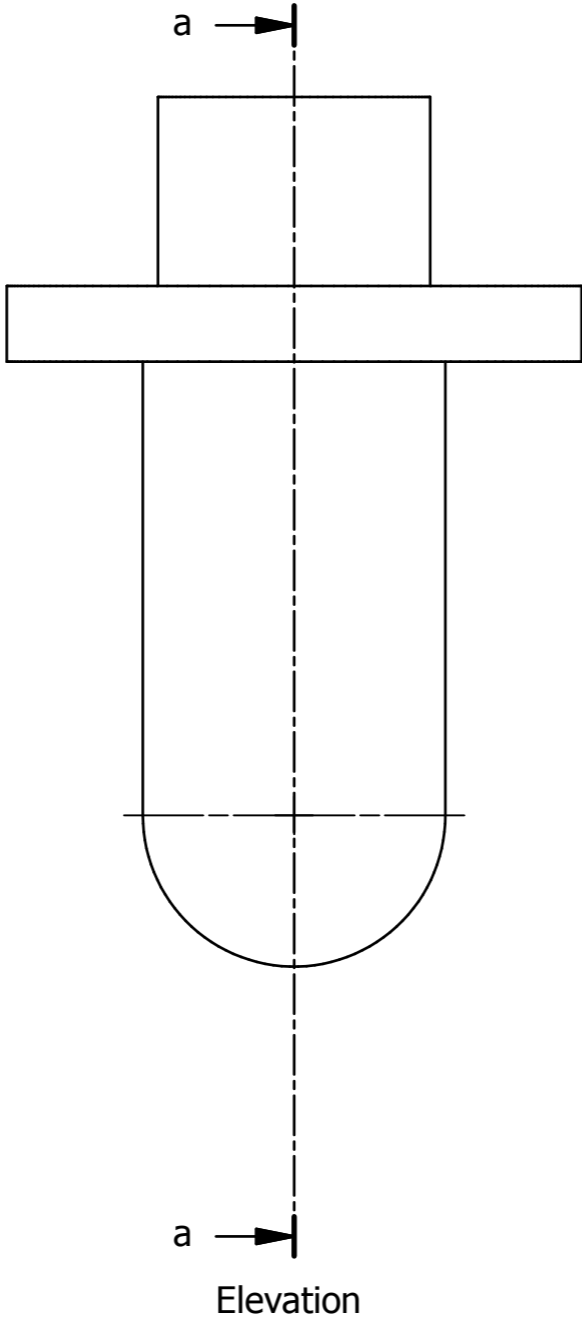
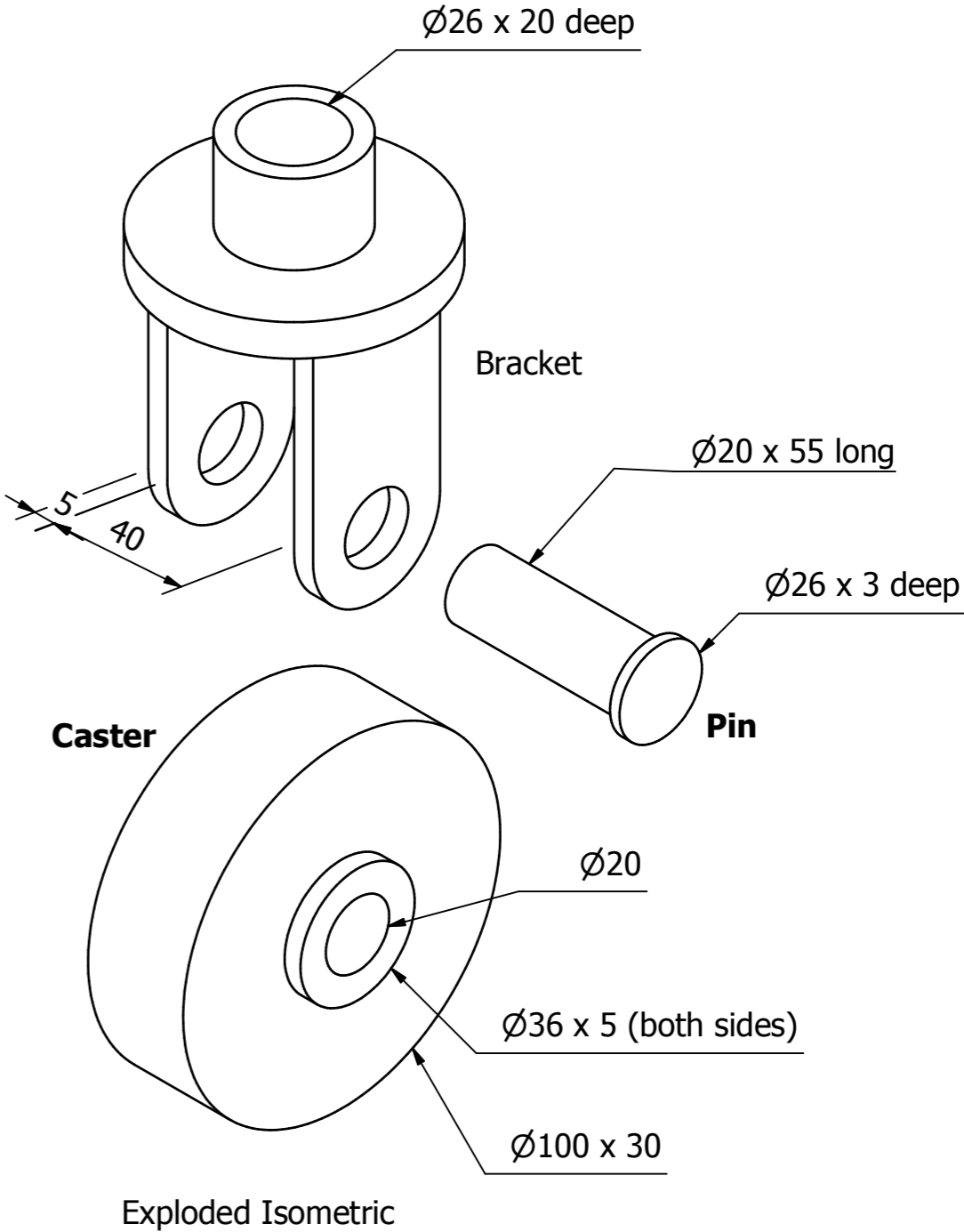
Nat4	Nat5	Name	Class		
N/A	2D Outcome 1	Teacher's Comment	Date Issued	Date Completed	

K6  
The incomplete elevation and exploded isometric view (not to scale) of a trolley caster are given.

Draw full size in the positions given:

- i. The complete elevation of the **assembled** caster:  
**Show all hidden detail**
- ii. The sectional end elevation on **A:A** of the handle:  
**Do not show hidden detail**

	Good	N to I
Use of construction lines		
Use of outlines		
Correct Dimensions		
Draughtmanship		



Sectional End Elevation a-a

Not to Scale

Nat4	Nat5	Name	Class		
N/A	2D Outcome 1	Teacher's Comment	Date Issued	Date Completed	

K7  
Orthographic Views of the component parts that make up a drawer handle are given.

Draw full size in the positions given:

- i. The elevation of the **assembled** handle:  
**Show all hidden detail**
- ii. The plan of the **assembled** handle:  
**Show all hidden detail**
- iii. The sectional end elevation on **A:A** of the handle:  
**Do not show hidden detail**



Plan

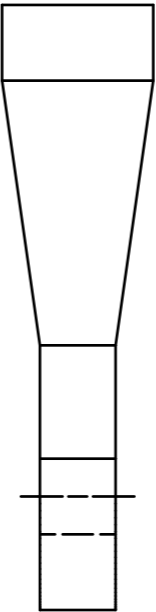
A →

A →



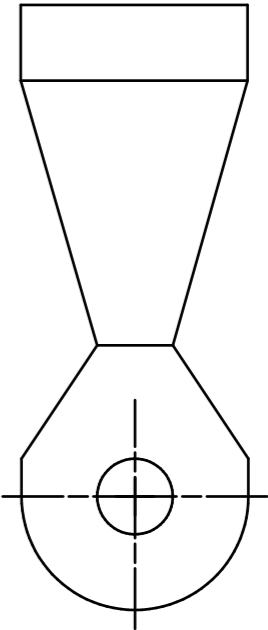
Sectional End Elevation A-A

Elevation

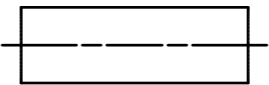


End Elevation

Pendant

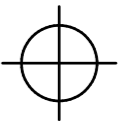


Elevation

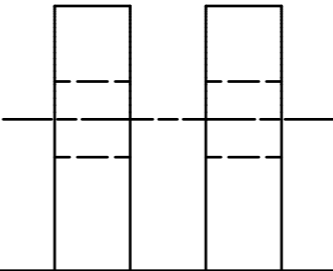


End Elevation

Pin

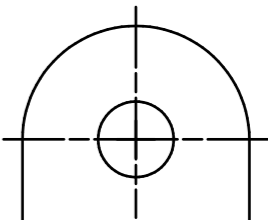


Elevation



End Elevation

Bracket



Elevation

Nat4	Nat5	Name	Class		
N/A	2D Outcome 1	Teacher's Comment	Date Issued	Date Completed	