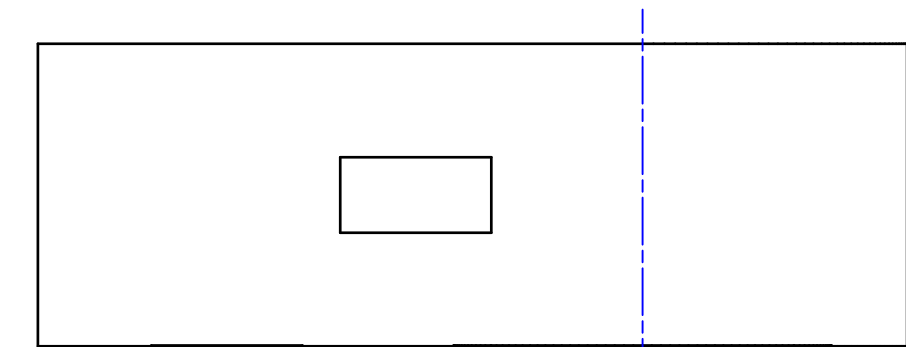


B1

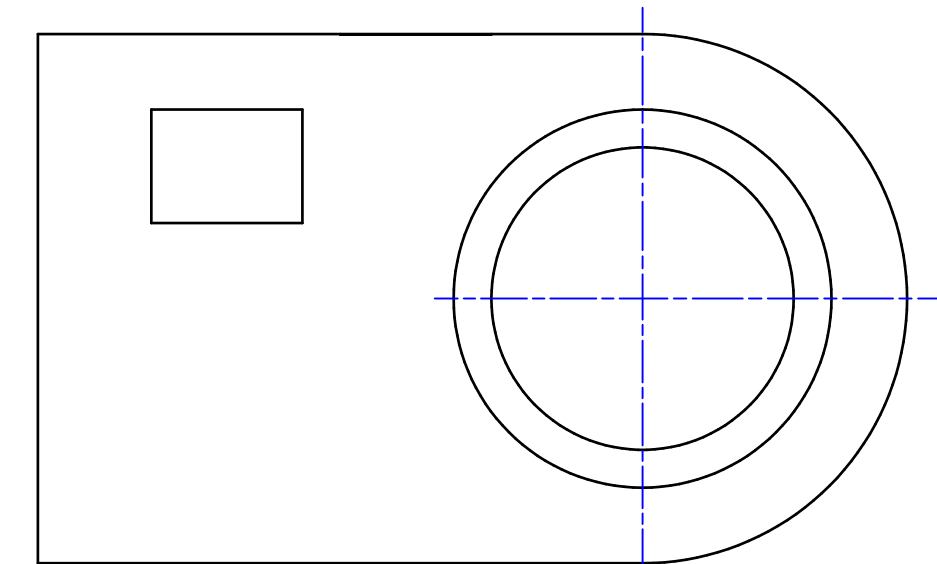
The Plan, Elevation and End Elevation of a Digital Camera are given.

Draw the Oblique View of the Camera using point X as the starting position.

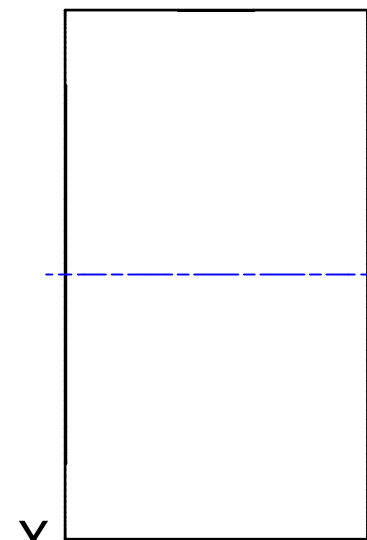
	Good	N to I
Use of construction lines		
Use of outlines		
Correct Dimensions		
Draughtmanship		



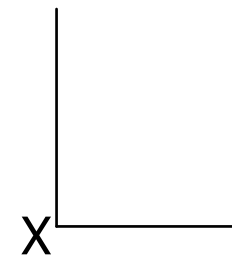
X Plan



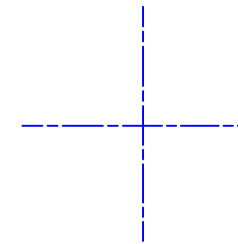
X Elevation



X End Elevation



Oblique



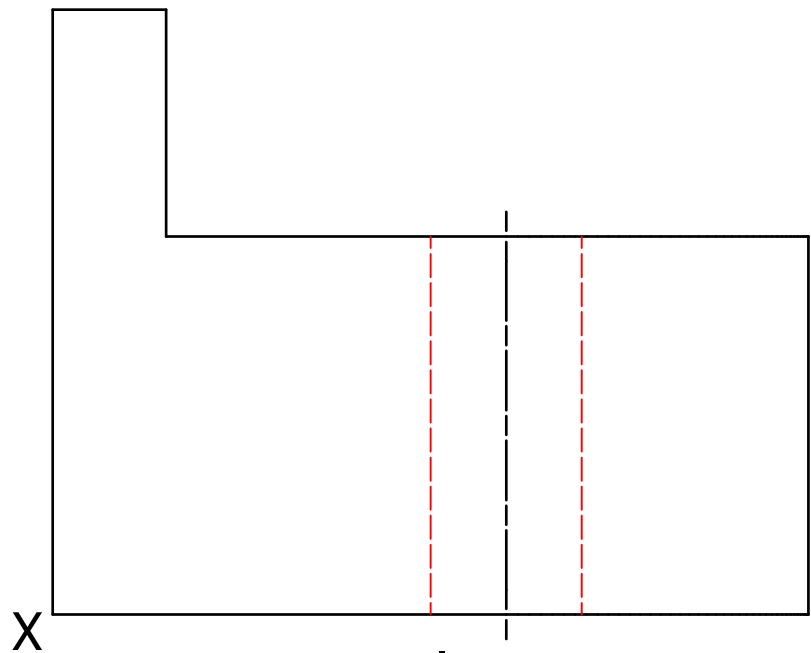
Nat4	Nat5	Name	Class		
3D Unit Outcome 1		Teacher's Comment	Date Issued	Date Completed	

B2

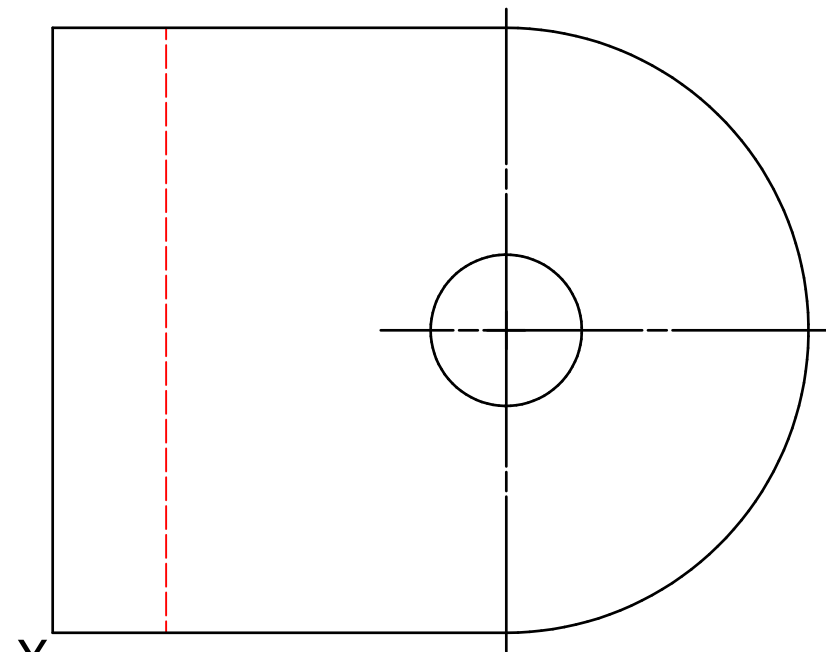
The Plan, Elevation and End Elevation of a Bracket are given.

Draw the Oblique View of the Bracket using point X as the starting position.

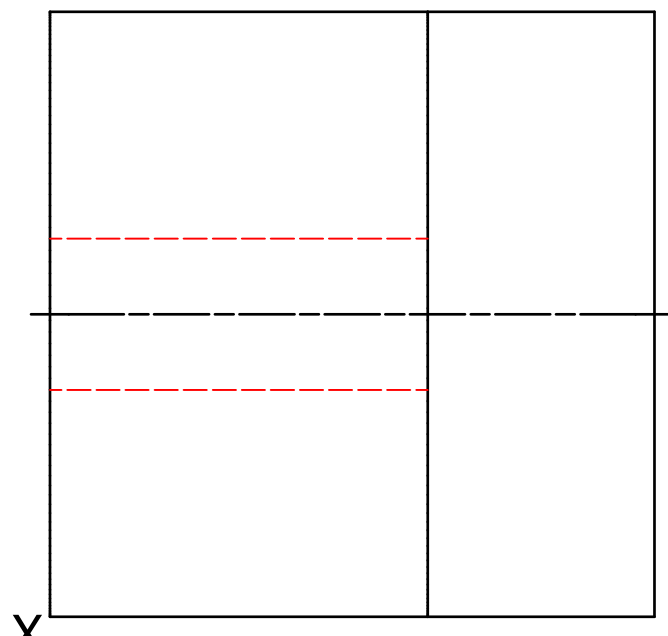
	Good	N to I
Use of construction lines		
Use of outlines		
Correct Dimensions		
Draughtmanship		



Plan



Elevation



End Elevation



Oblique

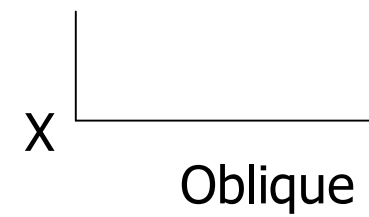
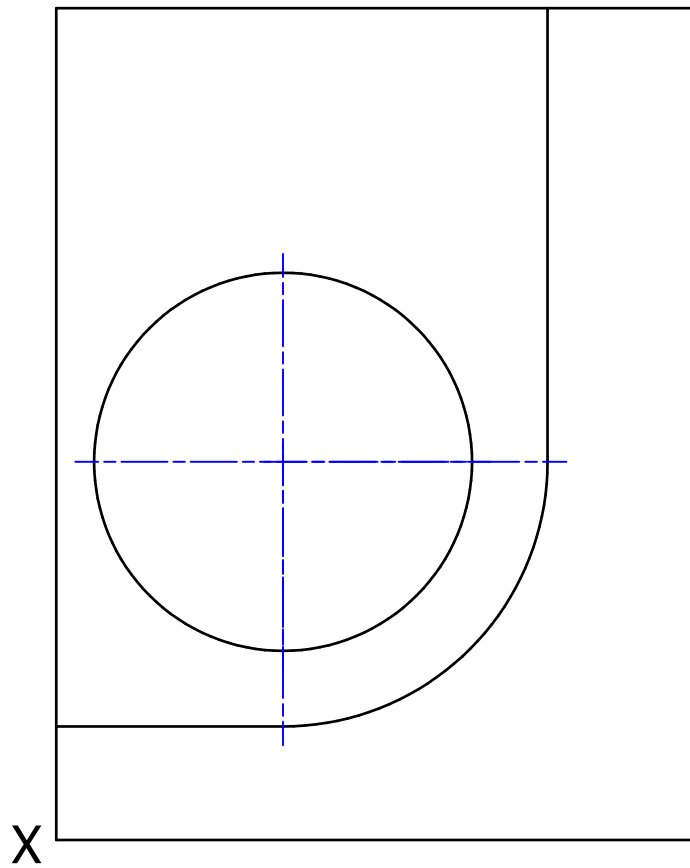
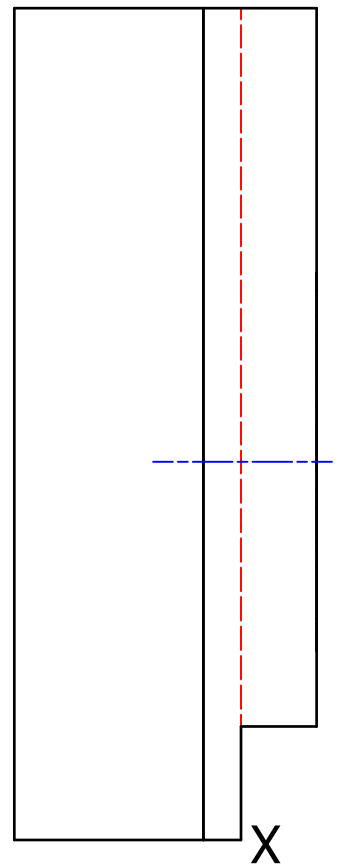
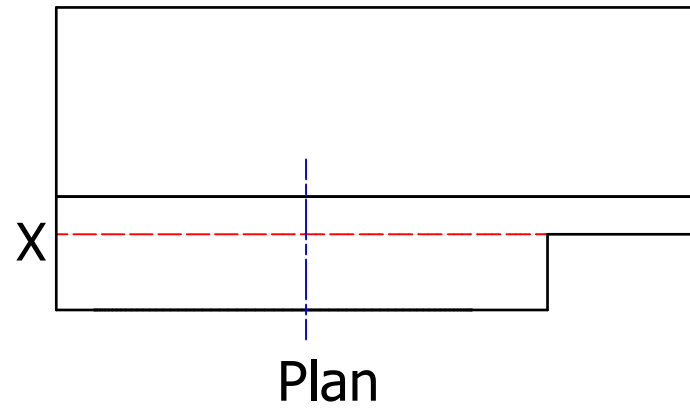
Nat4	Nat5	Name	Class		
3D Unit Outcome 1		Teacher's Comment	Date Issued	Date Completed	

B3

The Plan, Elevation and End Elevation of a small Speaker are given.

Draw the Oblique View of the Speaker using point X as the starting position.

	Good	N to I
Use of construction lines		
Use of outlines		
Correct Dimensions		
Draughtmanship		



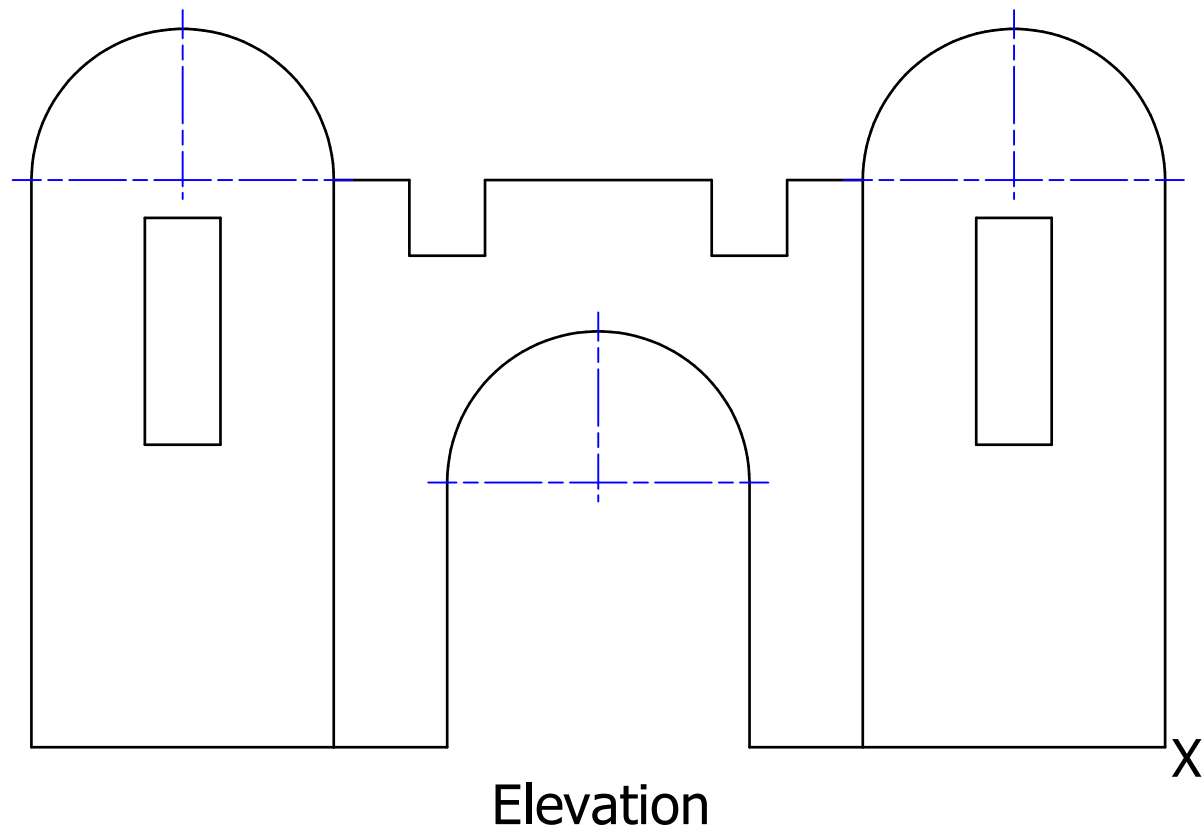
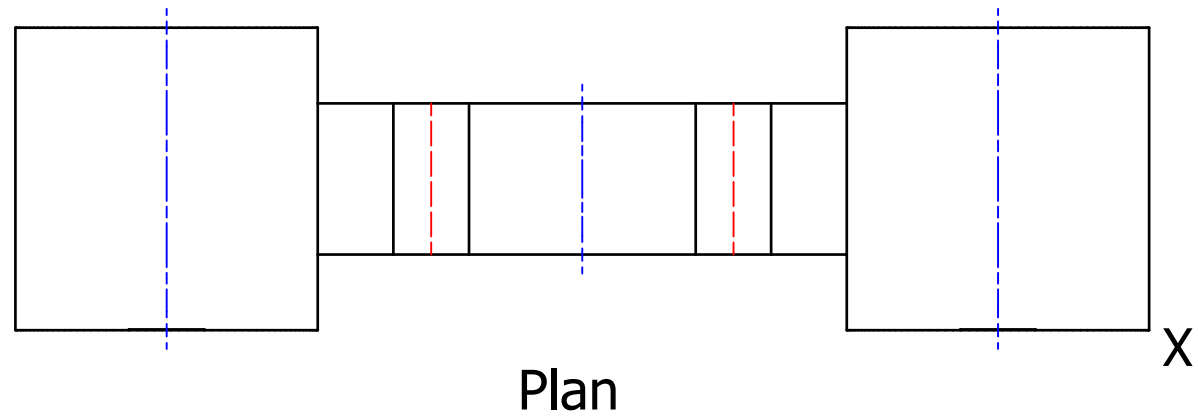
Nat4	Nat5	Name	Class		
N/A	3D Outcome 1	Teacher's Comment	Date Issued	Date Completed	

B4

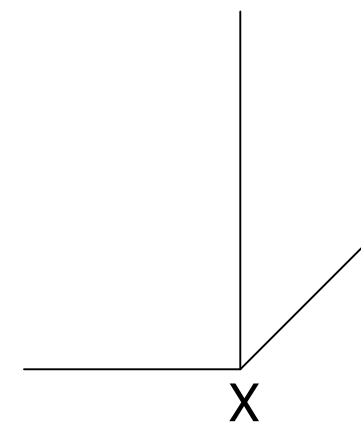
The Plan and Elevation of a Toy Castle are given.

Draw the Oblique View of the Castle using point X as the starting position.

	Good	N to I
Use of construction lines		
Use of outlines		
Correct Dimensions		
Draughtmanship		



Oblique



Nat4	Nat5	Name	Class		
N/A	3D Outcome 1	Teacher's Comment	Date Issued	Date Completed	