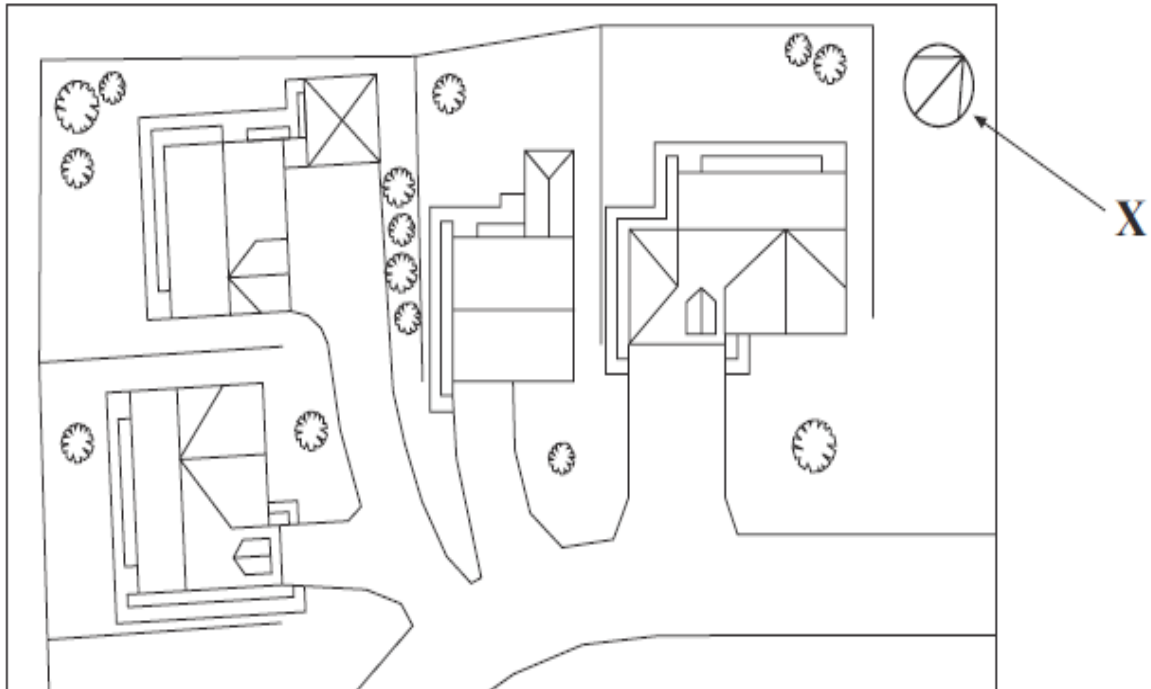




A new housing development is planned. One of the architect's plans is shown below.



(a) State the name given to this type of plan.

.....

(b) State **one** use for this type of plan.

.....

(c) State the appropriate scale for this type of plan.

.....

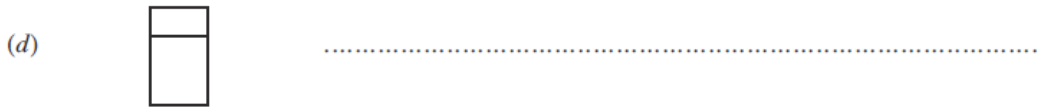
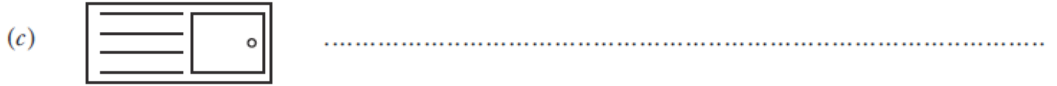
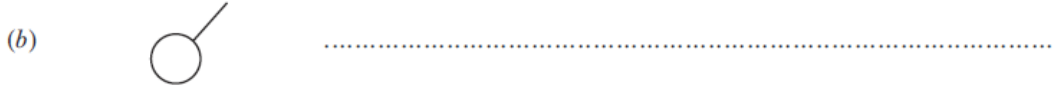
(d) State the purpose of symbol **X**.

.....

(4 marks)

3

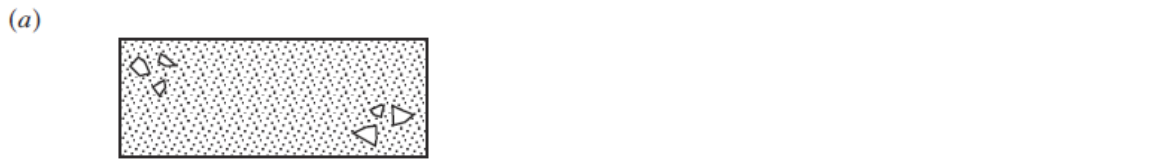
Identify the architectural symbols shown below.



(4 marks)

4

State what material each of the following British Standard symbols represent.

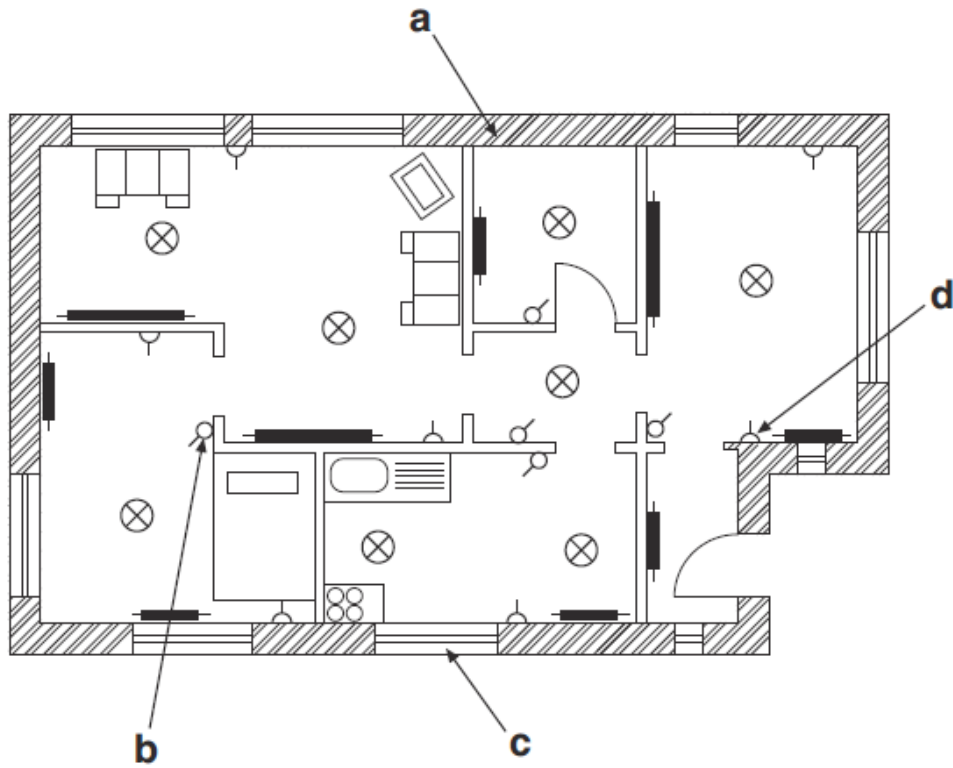


(4 marks)

1

A floorplan of a new house is shown below.

State the British Standard symbols shown at **a**, **b**, **c** and **d**.



a (1)

b (1)

c (1)

d (1)

(4 marks)

2

Describe **three** advantages of using a CAD package over manual drawing methods in the production of architectural drawings.

- 1 (1)
- 2 (1)
- 3 (1)

(3 marks)

