



Education, Youth & Communities

Consultation Report

Outcome Report on proposal to re-zone part of Greenfaulds High School catchment area to form part of the Cumbernauld Academy catchment area

23 April 2018

This report has been prepared having regard (in particular) to:

- (a) relevant written representation received by the council (from any persons) during the consultation period;
- (b) oral representations made to the council (by any person) at a Public Meeting; and
- (c) Report by Education Scotland prepared by Her Majesty's Inspectors of Education

This report is available for inspection at:

- (a) Education, Youth and Communities Headquarters, Municipal Buildings, Kildonan Street, Coatbridge, ML5 3BT
- (b) Cumbernauld Library, Allander Walk, Cumbernauld, Glasgow G67 1EE
- (c) Greenfaulds HS, Cumbernauld Academy, Baird Memorial PS, Condorrat PS, Eastfield PS, Ravenswood PS, Westfield PS, Woodlands PS, Abronhill PS, Carbrain PS, Cumbernauld PS, Kildrum PS, Whitelees PS
- (d) Via the following links -

www.northlanarkshire.gov.uk/cumbernauld-greenfauldsconsultation

This document has been issued by North Lanarkshire Council in accordance with the terms of the Schools (Consultation) (Scotland) Act 2010 and amendments contained in the Children and Young People (Scotland) Act 2014

23 April 2018

Contents

1. Background
2. Consultation Procedures
3. Views Expressed in the Consultation Process
4. Response to the views expressed
5. Education Scotland Statement
6. Service Response

Appendices:

Appendix (a) Committee paper outlining the proposal to:

re-zone part of Greenfaulds High School catchment area to form part of the
Cumbernauld Academy catchment area

1. **BACKGROUND**

1.1 At a meeting on 9th January 2018 the Education, Youth and Communities Committee considered a paper on the above proposal.

1.2 The consultation document detailed that there were three reasons for the proposal:

(1) To ensure that pupils who reside in the Mid Forest site are aligned with the same secondary school as all other pupils who reside within the proposed Abronhill Primary School catchment area. The re-zoning of the Mid Forest site from one primary school to another is the subject of a separate statutory consultation.

(2) To promote community integration within the Mid Forest site and the local Abronhill community with which it is most closely aligned geographically.

(3) To improve health, wellbeing, and air quality through a reduction in school transport.

2. **CONSULTATION PROCEDURES**

2.1 The consultation process was carried out having regard to the Schools (Consultation) (Scotland) Act 2010.

2.2 In summary, the consultation process complied fully with the requirements of the Act and included the following key actions:

- (i) Consultation with a wide range of stakeholders including a public meeting.
- (ii) A 30-day consultation period excluding local holidays and in-service days.
- (iii) The inclusion of an educational benefits statement in the consultation document.
- (iv) A statement from Education Scotland (formerly HMIE) and a published report covering the educational aspects of the proposal.
- (v) An appropriate response by the Council to any allegations of inaccuracies in the consultation information.
- (vi) This outcome report on the consultation to be published at least three weeks before a final decision is taken on the proposal.

3. **VIEWS EXPRESSED IN THE CONSULTATION PROCESS**

3.1 Two public meetings were convened as part of the consultation and the main points raised were noted. In addition 1 written response was received from parents and interest groups and individuals. Details are included in this report.

Meetings

- Public meetings at St. Margaret of Scotland Primary School and St. Lucy's Primary School were held on the evenings of 29th and 31st January 2018.
- In addition officers made themselves available to meet with Parent Council representatives on request throughout the consultation period.
- Pupil Consultation meetings were also held during the consultation period.
- Staff meetings to discuss the proposal were also offered to the schools

Written Responses

The main issues raised in the responses are summarised in sections 3 and 4 of this report to provide the reader with a proper reflection of the strength and breadth of the responses to this consultation. All the submissions are available for public reference at Education, Youth and Communities, Municipal Buildings, Kildonan Street, Coatbridge ML5 3BT.

Consultation Pro-forma

During the consultation process a consultation pro-forma was made available detailing four particular questions for which views were sought during the consultation.

Q1. Do you like the idea of the rezone proposal?

Q2. What are the good points about the proposal?

Q3. What worries you about the proposal?

In total **82** pupils from Greenfaulds High School responded, **55** for the proposal and **25** against.

In total **90** pupils from Cumbernauld Academy responded, **64** for the proposal and **26** against.

3.2 Public/stakeholder responses received - In total **1** response was received through the consultation process.

Copies of all responses to this consultation can be viewed at Education, Youth and Communities, Municipal Buildings, Kildonan Street, Coatbridge ML5 3BT.

4. RESPONSE TO THE VIEWS EXPRESSED

4.1 This section summarises the main issues raised in the consultation and the service response to each.

4.2 The issues raised can be grouped into the following categories. Each one is summarised in the subsequent paragraphs and the response from the Service is added in each case.

- Mid Forest area closer to Cumbernauld Academy than Greenfaulds High
- Better community links between Abronhill and Mid Forest site
- Pedestrian links between Mid Forest and Cumbernauld Academy
- Improved utilisation percentage at both schools

4.3 **Mid Forest area closer to Cumbernauld Academy than to Greenfaulds High**

The response received supported the proposal in relation to the Mid Forest area being significantly closer to Cumbernauld Academy rather than Greenfaulds High School.

Service Response

North Lanarkshire Council recognise this and suggest that the proposal is implemented as per the recommendation to committee.

4.4 Better community links between Abronhill area and Mid Forest site

It was noted that it would be beneficial to both communities if pupils from Mid Forest were to attend Cumbernauld Academy than Greenfaulds High School due to the link between the community of Abronhill and Mid Forest.

Service Response

The Mid Forest site is separated from the settlement of Abronhill by Forest Road, it is anticipated that the residents in this site would use the facilities available in nearby Abronhill and are more likely to consider themselves to be aligned to Abronhill.

4.5 Pedestrian links between Mid Forest and Cumbernauld Academy

It was commented considerable health and environmental benefits for pupils from Mid Forest of being within walking distance of the school. In particular the pedestrian links between Mid Forest and Cumbernauld Academy allowing pupils to walk safely to school.

Service Response

North Lanarkshire Council continues to promote walking to school across the council area. We encourage school children to use safe walking and cycling routes where possible. Use of these modes of transport can also help to ease local congestion, boost pupil health and self-esteem and help to instil responsible travel habits.

4.6 Improved utilisation percentage at both schools

It was noted that under the proposed re-zone changes if implemented that both schools would have a roll closer to 80% utilisation. This proposal would benefit both schools and provide a better learning experience for both sets of pupils.

Service Response

The Education, Youth and Communities service recognise that to provide best value, a utilisation figure of 80% or above is considered to be best practice. Post re-zoning, both schools will have a utilisation figure close to 80%.

5 EDUCATION SCOTLAND STATEMENT

Report by Education Scotland addressing educational aspects of the proposal by North Lanarkshire Council to re-zone part of Greenfaulds High School catchment area to form part of the Cumbernauld Academy catchment area.

Introduction

This report from Education Scotland has been prepared by Her Majesty's Inspectors of Education (HM Inspectors) in accordance with the terms of the *Schools (Consultation) (Scotland) Act 2010* and the amendments contained in the *Children and Young People (Scotland) Act 2014*. The purpose of the report is to provide an independent and impartial consideration of North Lanarkshire Council's proposal to re-zone part of Greenfaulds High School catchment area to form part of the Cumbernauld Academy catchment area. Section 2 of the report sets out brief details of the consultation process. Section 3 of the report sets out HM Inspectors' consideration of the educational aspects of the proposal, including significant views expressed by consultees. Section 4 summarises HM Inspectors' overall view of the proposal. Upon receipt of this report, the Act requires the council to consider it and then prepare its final consultation report. The council's final consultation report should include a copy of this report and must contain an explanation of how, in finalising the proposal, it has reviewed the initial proposal, including a summary of points raised during the consultation process and the council's response to them. The council has to publish its final consultation report three weeks before it takes its final decision. Where a council is proposing to close a school, it needs to follow all legislative obligations set out in the 2010 Act, including notifying Ministers within six working days of making its final decision and explaining to consultees the opportunity they have to make representations to Ministers.

HM Inspectors considered:

- the likely effects of the proposal for young people of the schools; any other users; children likely to become pupils within two years of the date of publication of the proposal paper;
- any other likely effects of the proposal;
- how the council intends to minimise or avoid any adverse effects that may arise from the proposal; and
- the educational benefits the council believes will result from implementation of the proposal, and the council's reasons for coming to these beliefs.

In preparing this report, HM Inspectors undertook the following activities:

- consideration of all relevant documentation provided by the council in relation to the proposal, specifically the educational benefits statement and related consultation documents, written and oral submissions from parents and others; and

- visits to the site of Cumbernauld Academy, Greenfaulds High School and Abronhill Primary School, including discussion with relevant consultees.

Consultation Process

North Lanarkshire Council undertook the consultation on its proposal with reference to the *Schools (Consultation) (Scotland) Act 2010* and the amendments in the *Children and Young People (Scotland) Act 2014*.

The council ran the consultation process from 10 January 2018 until 23 February 2018. Public meetings were held on 29 and 31 January 2018. One hundred and eighty-two young people across both secondary schools watched a presentation on the proposal and were asked their views on the proposal.

Educational Aspects of Proposal

The council proposes to realign the catchment areas of two secondary schools with the transfer of a currently undeveloped site (the Mid Forest site) from Greenfaulds High School catchment area to the Cumbernauld Academy school catchment area. This will help to promote improved community integration for young people residing in this area with their closest school in the future. The proposal has the potential to contribute to improved health and wellbeing through a reduction in school transport. It will also help to balance more evenly the school rolls of both secondary schools in the future, ensuring overcrowding is not an issue.

Consultation papers were issued to relevant consultees. Only one stakeholder attended the meeting at Greenfaulds High School on 29 January 2018. No stakeholders attended the meeting at Cumbernauld Academy on 31 January 2018. Seven stakeholders responded using the consultation response form, with five in favour, one against and one not answering. One hundred and eighty-two young people in both schools watched a presentation on the proposal and were asked their views on the proposal. The majority were in favour with less than 30% disagreeing. Parental views from the schools affected were positive. They could see value in what the council was proposing and valued the commitment by the council for continuity for existing young people in the delineated area attending Greenfaulds High School and for their siblings.

Summary

The proposal has the backing of almost all in the local community. There are educational and social benefits in young people attending the school closest to their community. This will also help North Lanarkshire Council manage more effectively its school estate.

6. Service Response

Education, Youth and Communities note the positive view taken by Education Scotland of this proposal.

Statutory Consultation

South Cumbernauld Re-zone

Proposal to re-zone part of Greenfaulds High School Catchment Area to form part of the Cumbernauld Academy Catchment Area

EDUCATION, YOUTH AND COMMUNITIES



Index

Section	Page
1. Introduction	3
2. Consultation Requirements	3
3. Proposal	4
4. Provision	5
5. Financial Implications	5
6. Impact on school rolls	6
7. Admission and transfer of pupils	7
8. Association with local area	7
9. Educational Benefits Statement	7
10. Community Impact Statement	8
11. Equality Impact Assessment	8
12. Inaccuracies or Omissions	9
13. The Statutory Consultation Process – Additional Information	9
Appendix 1 - Current Catchment Area Greenfaulds High School	11
Appendix 2 - Proposed Catchment Area Greenfaulds High School	11
Appendix 3 - Current Catchment Area Cumbernauld Academy	12
Appendix 4 - Proposed Catchment Area Cumbernauld Academy	12
Appendix 5 - Consultation Timeline	13
Appendix 6 - Consultation Response Form	14

NORTH LANARKSHIRE COUNCIL: EDUCATION, YOUTH AND COMMUNITIES

Proposal to re-zone part of Greenfaulds High School Catchment Area to form part of the Cumbernauld Academy Catchment Area

1 INTRODUCTION

- 1.1 School catchment areas define which nursery, primary and secondary school each residential property in North Lanarkshire is aligned to.
- 1.2 School catchment areas are historical in nature with most of the current catchment boundaries being in place long before the formation of North Lanarkshire Council. This is the case for the area outlined in this proposal.
- 1.3 All geographical areas, including vacant land (where there is no housing) are included within a catchment boundary to ensure the whole authority is included in the zoning of the school estate. As such, there are instances where large areas of open space are included within a catchment area but where there are no current plans to build new housing.
- 1.4 The finalised draft North Lanarkshire Local Plan 2012 proposed planned urban expansion by means of a community growth area (CGA) in South Cumbernauld to meet anticipated housing demand. It is anticipated that up to 1200 new dwellings (as outlined in the 2016 Housing Land Audit) may be constructed within the South Cumbernauld CGA area.
- 1.5 The South Cumbernauld CGA is made up of two separate parcels of land: one situated to the south of Lenziemill Road, hereafter referred to as "Lower Palacerigg" and one to the south of Forest Road, hereafter referred to as "Mid Forest" in Cumbernauld. This proposal relates to the Mid Forest area only.
- 1.6 The proposed changes would see the catchment areas for the schools realigned, resulting in the transfer of the Mid Forest site from Greenfaulds High School catchment area to the Cumbernauld Academy school catchment area.

2. CONSULTATION REQUIREMENTS

- 2.1 In terms of the Schools (Consultation) (Scotland) Act 2010, the Education Authority is required to publish details of, and consult on, any proposal to change the catchment area of any school.
- 2.2 North Lanarkshire Council will not make any decision, or put any changes into effect, until the consultation period has been concluded in line with statutory requirements.
- 2.3 The consultation period will be a total of 45 days, which includes 30 school days excluding one in-service day and two school holidays. It begins on Wednesday 10 January 2018 and concludes on Friday 23 February 2018.
- 2.4 The consultation will involve pupils, parents/carers, Parent Councils and staff of the schools involved as well as other associated stakeholders and statutory consultees as detailed in section 13.
- 2.5 The public meetings will be held at;
Greenfaulds High School on Monday 29th Jan 2018 at 7pm

Cumbernauld Academy on Wednesday 31st January 2018 at 7pm

- 2.6 Council officers will be present at the public meetings to discuss the proposal and there will be an opportunity to ask questions. Should you wish to submit a written question that you wish to be answered during the meeting please ensure that this is submitted at least two days in advance of the public meeting. These can be sent to School Consultations, Education, Youth and Communities, Municipal Buildings, Kildonana Street, Coatbridge, ML5 3BT. Tel 01236 812596 or by emailing southcumbernauldconsultation@northlan.gov.uk.
- 2.7 At the end of the consultation process, a report will be prepared for North Lanarkshire Council detailing all responses received, summaries of their content and a statement from HMIE on the educational aspects of the proposal. An officer response to the issues raised through the consultation will also be incorporated in the report. Copies of the report will be available, prior to consideration by the council, in both schools, local libraries and online. It is envisaged that the report will be published on 13th April 2018. The key dates are set out in Appendix 5.
- 2.8 A copy of the documents and other items related to the consultation can be found online <http://www.northlanarkshire.gov.uk/index.aspx?articleid=1164>
- 2.9 Further information on the proposal can be obtained by writing to School Consultations, Education, Youth and Communities, Municipal Buildings, Kildonana Street, Coatbridge ML5 3BT. Tel 01236 812596 or by emailing school consultation southcumbernauldconsultation@northlan.gov.uk
- 2.10 All interested parties are invited to submit their comments on or before Friday 23 February 2018.

3. PROPOSAL

- 3.1 The proposal in this document is to realign the catchment areas of two secondary schools with the transfer of the Mid Forest site from Greenfaulds High School catchment area to the Cumbernauld Academy school catchment area

The main reasons for this proposal are:

- (1) To ensure that pupils who reside in the Mid Forest site are aligned with the same secondary school as all other pupils who reside within the proposed Abronhill Primary School catchment area. The re-zoning of the Mid Forest site from one primary school to another is the subject of a separate statutory consultation.
- (2) To promote community integration within the Mid Forest site and the local Abronhill community with which it is most closely aligned geographically.
- (3) To improve health, wellbeing, and air quality through a reduction in school transport.

4 PROVISION

- 4.1 Both schools have surplus places as outlined in the table below. Therefore, the realignment of the Mid Forest site to the Cumbernauld Academy catchment area should have a positive impact on the roll of this school.

School	Roll	Capacity	Surplus Places	Occupancy%
--------	------	----------	----------------	------------

Greenfaulds HS	1345	1530	185	88
Cumbernauld Academy	853	1318	465	65

- 4.2 School roll projections anticipate the number of pupils who may be generated from new housing. This is referred to as the Pupil Product Ratio (PPR) from new housing developments. Currently, North Lanarkshire Council use a PPR of 0.3. For every 10 houses built, it is estimated that 3 primary school pupils will be generated.
- 4.3 The number of houses proposed on the Mid Forest site has fluctuated between 600 and 1,000.
- 4.4 Based on the current housing land audit (2016), it is proposed that a maximum of 600 houses would be built. On these figures, 144 pupils would be generated, with 100 pupils (70%) estimated to attend Cumbernauld Academy. Based on current use of the school, the school would be able to accommodate these pupils.
- 4.5 It should be recognised that all of these figures are subject to change and are correct as at the last school census day in November 2016. As the school curriculum changes, areas currently allocated as classrooms could be reconfigured for other use, which would reduce the capacity of the school.
- 4.6 Based on the information above, there are various factors which would be considered at planning application stage in order to determine if the developers would require to provide a contribution to the school, in the event that the proposal is accepted. Should additional provision be required, due to the impact of the development, it would be the expectation of the council that the developer will contribute to the costs linked to this development. This is in line with Scottish Government guidelines on “planning contributions and good neighbour agreements” outlined in circular 3/2012.

5 FINANCIAL IMPLICATIONS

Transport costs to current catchment school

- 5.1 Contract for free school transport would be provided based on need and best value. School contracts would be arranged on behalf of Education, Youth and Communities by Strathclyde Passenger Transport in line with current practice.
- 5.2 Based on the current rate, it is estimated that the provision of free school transport costs in the region of £636 per entitled pupil, per year. Due to various factors including different start and finishing times it is deemed impractical to have primary and secondary pupils on the same contract. Therefore, it is likely that separate contracts would be required to serve pupils from the Community Growth Area.

Transport cost to proposed catchment schools

- 5.3 Based on current rates, it is estimated that the provision of free school transport would cost in the region on £636 per entitled pupil, per school year. However, if re-alignment were to take place, pupils from the Mid Forest site would not require free school transport resulting in a saving in the region of £636 per pupil per year, equating to £4452 per pupil during the course of their primary education.

Costs for adaptations to existing school buildings

- 5.4 If catchment areas are re-zoned, both schools would have sufficient capacity to accommodate the projected pupil yield from the Community Growth Area.

Financial summary

- 5.5 There would be no savings to be made in terms of transport costs for pupils from the Lower Palacerigg Site, over the term of primary and secondary education. However it is estimated that the saving per pupil from the Mid Forest Site over the term of primary and secondary education (P1 to S6) would be in the region of £4452 per pupil.

6 IMPACT ON SCHOOL ROLLS

Number of pupils expected from the re-zoned area

- 6.1 It is recognised that to provide best value, a utilisation figure of 80% or above is considered to be best practice. I'm not sure whether this refers to the duty to secure best value or whether it is in the context of a national strategy or principles for effective management of the school estate. However it is important that the utilisation figure does not exceed 100% in normal circumstances to ensure that the demand pressures do not affect pupils' learning experience.
- 6.2 Based on current trends it is anticipated that the South Cumbernauld Community Growth area would result in a pupil yield for the secondary sector of around 288 pupils split between the two sites.
- 6.3 Table 1 details roll projections for Greenfaulds High School and Cumbernauld Academy if the current catchment areas were to be retained. Table 2 details roll projections in the event that the proposal to re-zone the catchment boundaries is approved and implemented.

Table 1 – Current catchment areas – Projected rolls and utilisation

School	Capacity	Roll 2017		Roll 2019		Roll 2021		Roll 2023		Roll 2025	
		Roll	%	Roll	%	Roll	%	Roll	%	Roll	%
Greenfaulds HS	1522	1265	83	1276	84	1276	84	1226	81	1291	85
Cumbernauld Academy	1318	863	65	882	67	995	75	1021	77	979	74

Table 2 – Re-zoned catchment areas – Projected rolls and utilisation

School	Capacity	Roll 2017		Roll 2019		Roll 2021		Roll 2023		Roll 2025	
		Roll	%	Roll	%	Roll	%	Roll	%	Roll	%
Greenfaulds HS	1522	1265	83	1263	83	1237	81	1161	76	1200	79
Cumbernauld Academy	1318	863	65	895	68	1034	78	1086	82	1070	82

7 ADMISSION AND TRANSFER OF PUPILS

- 7.1 It is proposed that the new zoning arrangements will come into effect from August 2018.
- 7.2 However, it is acknowledged that it would be disruptive for pupils then enrolled at Greenfaulds High School to move to a different school. Similarly it would be very inconvenient for parents if siblings were obliged to attend different schools. Therefore, the following transition arrangements for the introduction of the new catchment area are proposed.
- 7.3 Pupils already in attendance at Greenfaulds High School, who live in the delineated area affected by this consultation, will continue to attend Greenfaulds High unless a decision is taken by the parent or carer to move them to Cumbernauld Academy.
- 7.4 Pupils from the area delineated in this document who would previously have enrolled in Greenfaulds High School would continue to be entitled to enrol in the school if they have one or more siblings still in attendance in the school.
- 7.5 Pupils, other than those described in 7.3 or 7.4 above, would normally enrol in the school to which the area where they live is aligned.
- 7.6 The right to make a placing request to a school of choice remains available. Such applications are made in accordance with legislation governing placing requests.

8 ASSOCIATION WITH THE LOCAL AREA

- 8.1 The Mid Forest site is separated from the settlement of Abronhill by Forest Road. It is anticipated that residents in this site would use the facilities available in nearby Abronhill and are more likely to consider themselves to be aligned to Abronhill and to experience a more in depth educational experience through interaction with the local community of Abronhill.

9 EDUCATIONAL BENEFITS STATEMENT

- 9.1 The schools affected by this proposal will be Greenfaulds High School and Cumbernauld Academy and their associated primary schools see lists below;

Greenfaulds High School

Baird Memorial Primary School
Condorrat Primary School
Eastfield Primary School
Ravenswood Primary School
Westfield Primary School
Woodlands Primary School

Cumbernauld Academy

Abronhill Primary School
Carbrain Primary School
Cumbernauld Primary School
Kildrum Primary School
Whitelees Primary School

- 9.2 The proposed changes would see the rezoning of pupils from the Mid Forest residential development adjacent to the Abronhill area. It is proposed to move this development from the Greenfaulds High School catchment area to the Cumbernauld Academy catchment area thereby associating the development with its more natural hinterland, Abronhill.

- 9.3 It is anticipated that, since all pupils within the Mid Forest Area will be zoned to Cumbernauld Academy, this will promote integration within the local community and provide a platform for the strengthening of local community ties.
- 9.4 Pupils who are resident within the delineated zone for a school will be able to attend their zoned school and be taught with peers from their community.
- 9.5 Families who live in the affected area will have clear information on their zoned high school, thereby providing certainty about future zoning arrangements.
- 9.6 The proposals will ensure that Greenfaulds High School and Cumbernauld Academy will have clear and distinct associations with their own local communities.
- 9.7 The proposal will have a positive impact on the balance between the numbers of pupils in the each of the high school communities. It will help alleviate projected pupil roll pressures in Greenfaulds High School from housing development in the Mid Forest area and associate the area with the high school in the local area, Cumbernauld Academy.
- 9.8 By alleviating current and future capacity pressures on the existing school estate in this area, the ability to create flexible learning spaces in the schools will improve the range of learning environments. This will support further improvement in attainment and achievement in both high schools.
- 9.9 The proposals will help ensure that the schools will be better equipped to deliver the full breadth of Curriculum for Excellence. This will enhance the opportunity to create more adaptable environments for learning, in which to facilitate co-operative and interdisciplinary learning, reduce pressure on technology and practical teaching spaces in Greenfaulds High School and improve the social environment.
- 9.10 The curriculum in both schools will provide the opportunity for learners to achieve across all curricular areas and develop skills, attributes and capabilities through courses aligned with the design principles of Curriculum for Excellence: challenge and enjoyment, breadth, progression, depth, personalisation and choice, coherence and relevance.

10 COMMUNITY IMPACT STATEMENT

- 10.1 It is anticipated that the residents of the Mid Forest site will be socially connected to the Abronhill community rather than the Greenfaulds community. The site, as outlined in the Strategic Development Framework for South Cumbernauld, will include pedestrian links to the Abronhill community.
- 10.2 Local schools are widely regarded as a key social feature in any local community. Therefore, a key benefit resulting from the proposed realignment of this area to the Abronhill local community will promote community cohesion as outlined in the proposal in section three.

11 EQUALITY IMPACT ASSESSMENT

- 11.1 The Equality Impact Assessment, Stage 1 Initial Screening has been carried out using the Council Equality Impact Assessment Toolkit. This indicates that a full impact assessment (Stage 2) is required and information gathered during the consultation

exercise will inform the assessment of impact on protected groups. The Equality Impact Assessment will inform the post consultation report. **Appendix 1**

12 INACCURACIES OR OMISSIONS

12.1 There is a statutory requirement for the Council to consider any allegation of an inaccuracy or omission and determine whether the allegation has foundation. Where inaccuracies or omissions are notified to or discovered by the Council within this proposal document, the Council will determine if relevant information has in its opinion been omitted or whether there is in fact an inaccuracy. Notifiers of any omissions or inaccuracies will be informed of the Council's decision and the reasons for that decision. Notifiers will also be informed of any action the Council is taking and of the reasons why it is or is not taking such action. The Council will invite the notifier to make further representations to the council if they disagree with the Council's determination or its decision as to whether to take action.

If the authority has found, either itself or through a concern being raised, that there is an inaccuracy or omission in the proposal paper, it must decide whether it relates to a material consideration relevant to the proposal. Where the confirmed inaccuracy or omission relates to a material consideration, there is a duty on the Council to correct it. Appropriate action will then be taken by the Council depending on whether the inaccuracy or omission relates to a material consideration. Such action may include issuing withdrawing the proposal and issuing a revised proposal paper for the whole consultation period; or issuing a corrected proposal paper with, if appropriate, an extension of the consultation period. In any of these eventualities, all relevant consultees (and, where applicable, the notifier(s) of any omissions or inaccuracies) and HMIE (Education Scotland) will be advised of the appropriate action.

13 THE STATUTORY CONSULTATION PROCESS – ADDITIONAL INFORMATION

13.1 The current requirements for consulting are set out in the Schools (Consultation) (Scotland) Act 2010. This consultation will be carried out in accordance with the Act.

13.2 This consultation has been planned in order to meet the following statutory requirements:

- (1) The consultation document sets out the details of the proposal.
- (2) The proposal paper details the educational benefits of the proposal and other relevant information;
- (3) The proposal paper will be published and widely advertised.
- (4) North Lanarkshire Council will seek to determine whether there are inaccuracies or omissions within the proposal paper and take such action as it considered necessary.
- (5) The consultation period will be period of at least 6 weeks, including at least 30 school days.

- (6) Prior to the commencement of the consultation period the authority will give notice of the proposal to the relevant consultees. The relevant consultees are defined in the Schools (Consultation) (Scotland) Act 2010, and are as follows:

Statutory consultees:

- the Parent Council or Combined Parent Council of any affected school,
- the parents of the pupils at any affected school,
- the parents of any children expected by the education authority to attend any affected school within two years of the date of publication of the proposal paper,
- the pupils at any affected school, in so far as the education authority considers them to be of a suitable age and maturity),
- the staff (teaching and other) at any affected school,
- any trade union which appears to the education authority to be representative of the persons mentioned above
- the community council (if any)
- the community planning partnership (within the meaning of section 4(5) of the Community Empowerment (Scotland) Act 2015) for the area of the local authority in which any affected school is situated,
- any other community planning partnership that the education authority considers relevant,
- any other education authority that the education authority considers relevant.

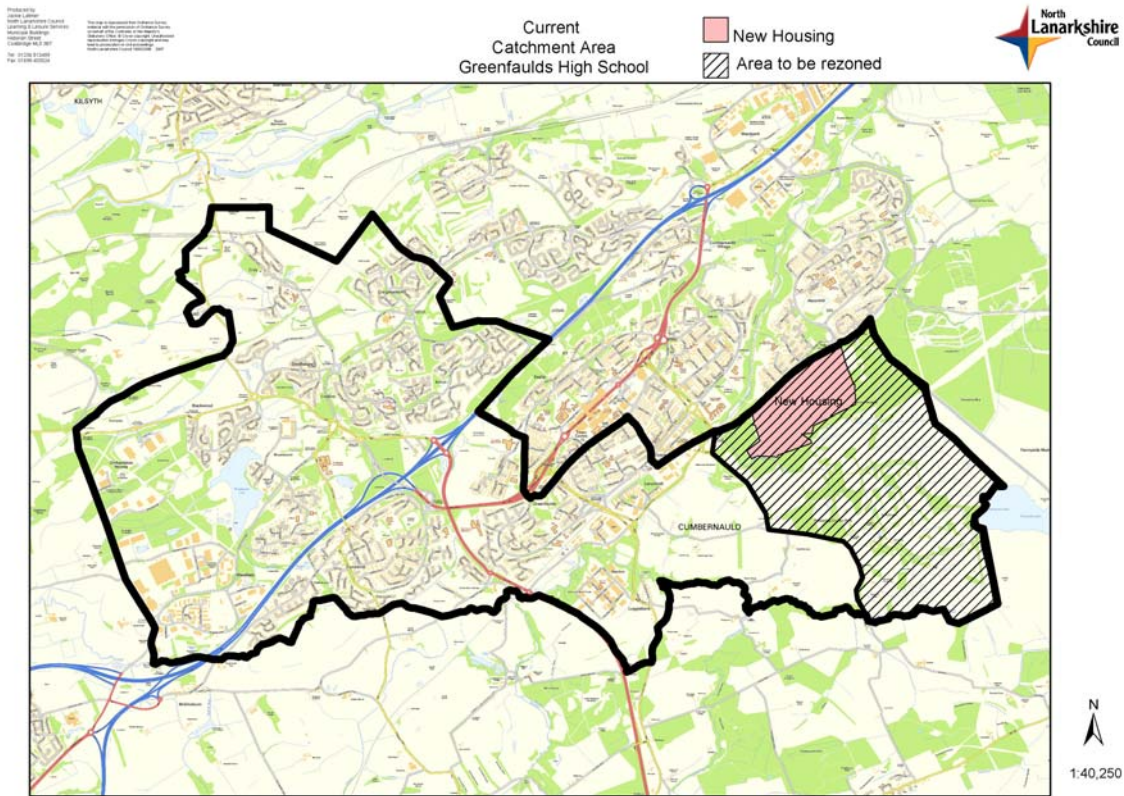
Other stakeholders who will be contacted:

- Education Scotland
- Elected Members
- SPT/local school transport providers
- Roads Department colleagues

- (7) During the consultation period, the authority will hold and be represented at public meetings on the relevant proposal.
- (8) The council will involve HMIE (Education Scotland) in the consultation process. This will culminate in HMIE(Education Scotland) preparing and submitting an independent report on the educational aspects of the proposal.
- (9) Following the consultation period, the council will prepare and publish a consultation report. The report will be published at least three weeks before a final decision is taken on the proposal.
- (10) The consultation timeline provides further information on the timescales for various stages in the statutory process.

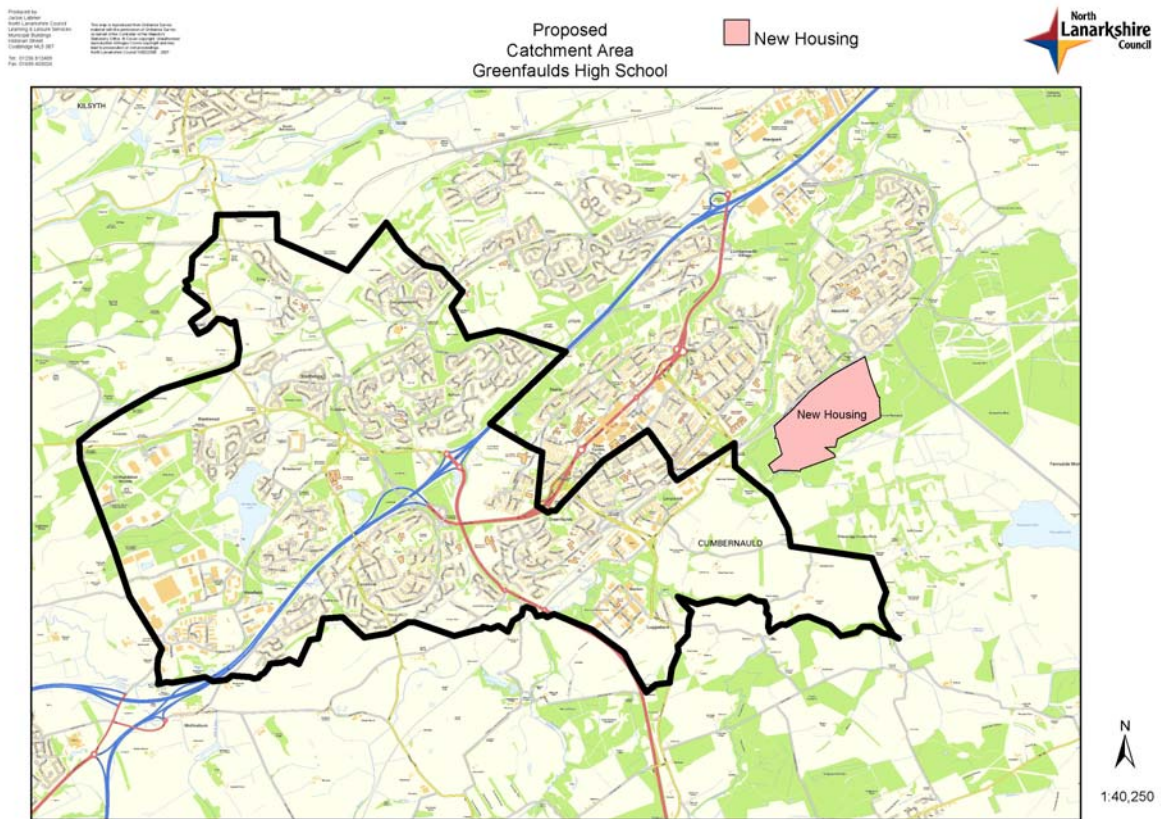
Current Catchment Area Greenfaulds High School

Appendix 1



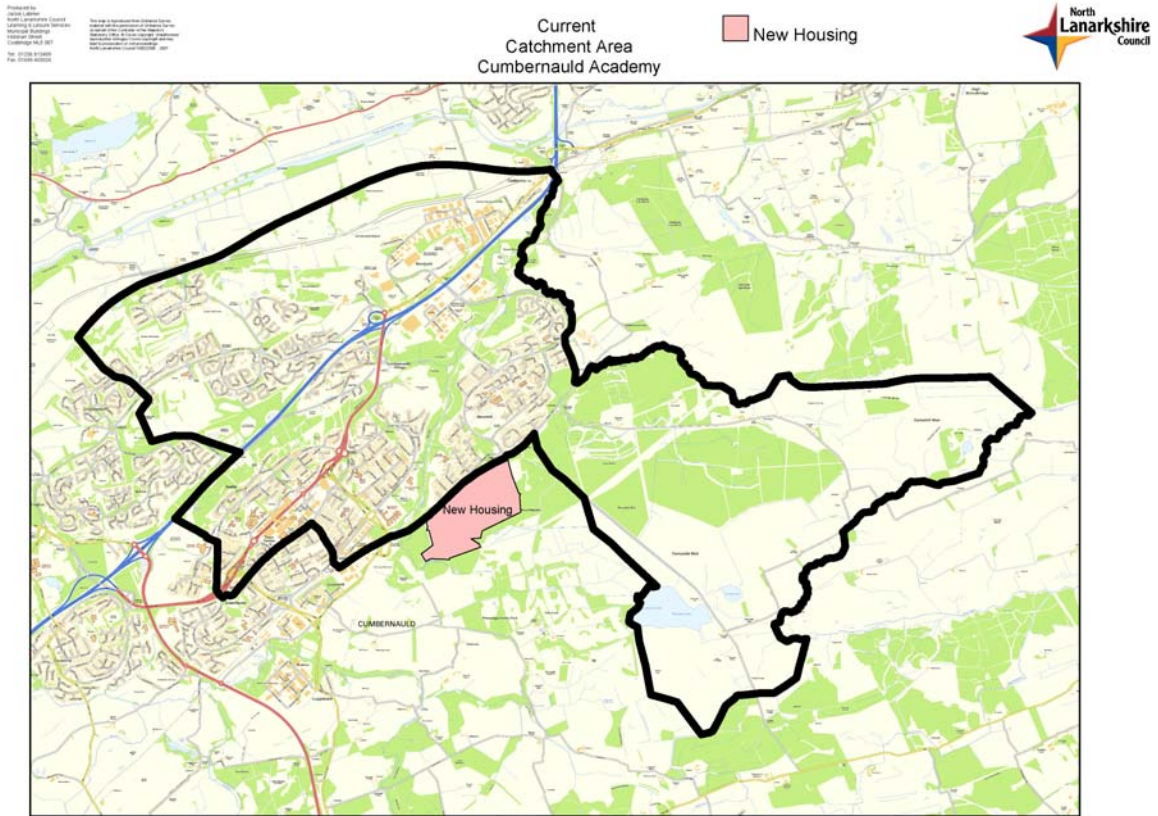
Proposed Catchment Area Greenfaulds High School

Appendix 2



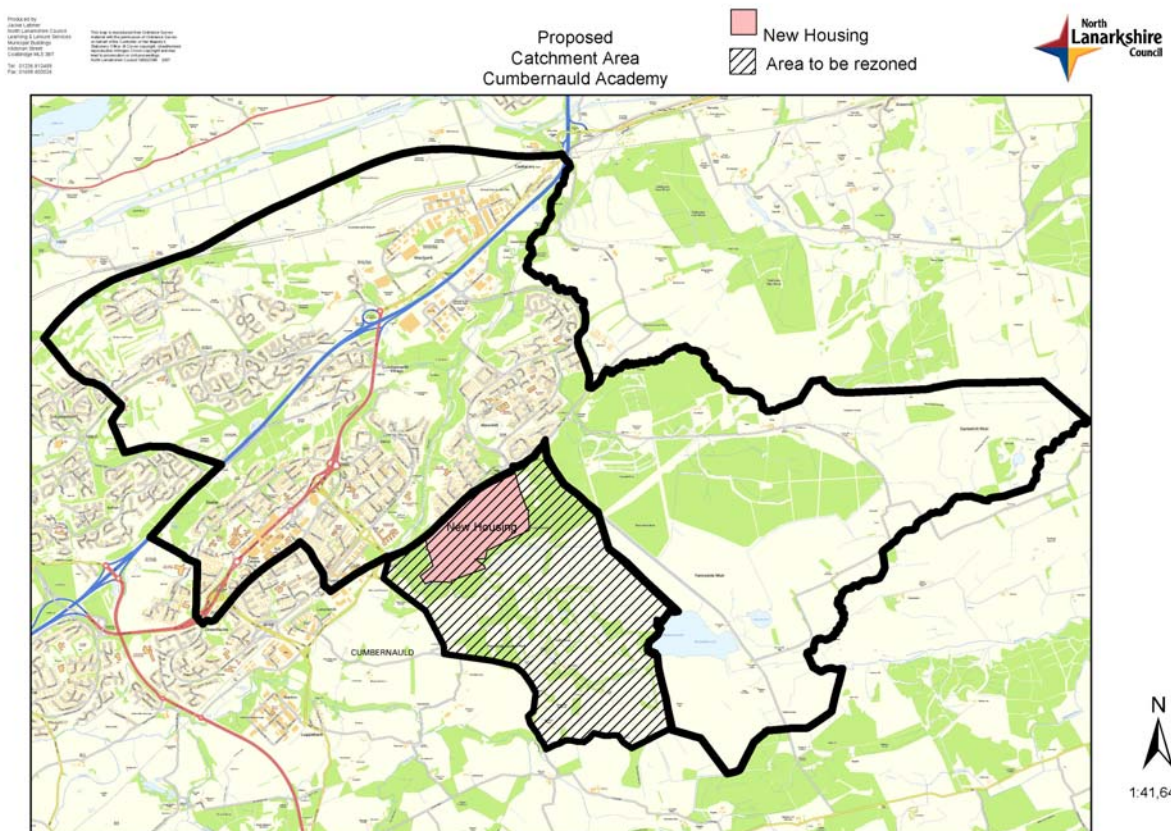
Current Catchment Area Cumbernauld Academy

Appendix 3



Proposed Catchment Area Cumbernauld Academy

Appendix 4



Consultation Timeline

Appendix 5

Stages	Timeline	Date
1. <i>Committee Date</i>		Tuesday 9 January 2018
2. <i>Consultation Starts Phase 1</i>	Minimum of 6 weeks To include 30 calendar days	Wednesday 10 January 2018
3. <i>Public Meetings</i>		Greenfaulds High– Monday 29 Jan 2018 at 7pm Cumbernauld Academy – Wednesday 31 Jan 2018 at 7pm
4. <i>Consultation Ends</i>	30 Days	Friday 23 rd February 2018
5. <i>Report to Education Scotland Phase2</i>	2 weeks	Friday 9 th March 2018
6. <i>Education Scotland produce report</i>	3 weeks	Friday 30 th March 2018
7. <i>Consultation report published Phase 3</i>	No specified timescale	Friday 13 th April 2018
8. <i>Time for further consideration</i>	3 weeks	Friday 4 th May 2018
9. <i>Final Committee Decision</i>		15 May 2018 (Education Committee) 21 June 2018 (Council)
10. <i>Implementation Date</i>		August 2018

Consultation Response Form

Proposal to rezone parts of the Greenfaulds High School catchment area to form part of the Cumbernauld Academy catchment area.

Your Views

1. Do you support the proposal?

Yes

No

Do you have any comments on the proposal?

2. Are there any further comments you would like to make?

Your main interest in responding

3. What is your main interest in responding to this consultation?

I am a parent/carer of a child attending _____

I am a child attending _____

Other interested party _____