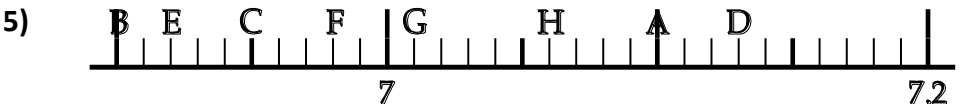
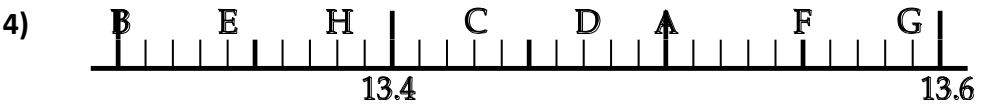
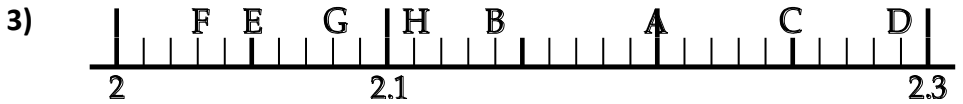
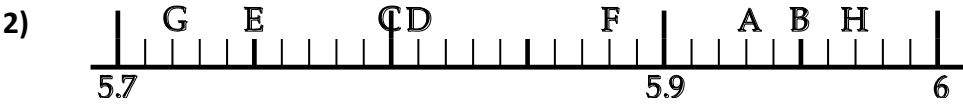
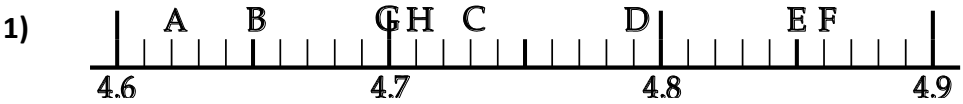
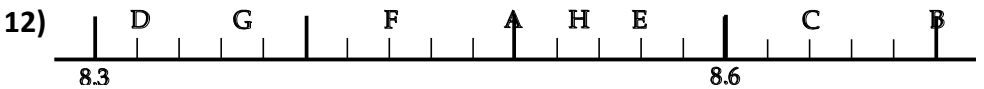
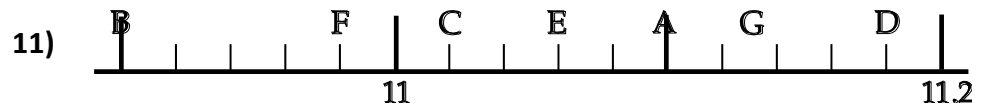
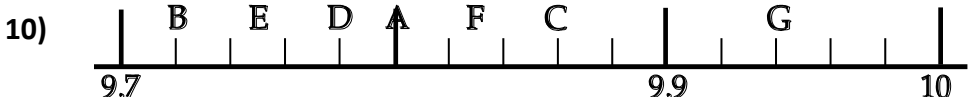
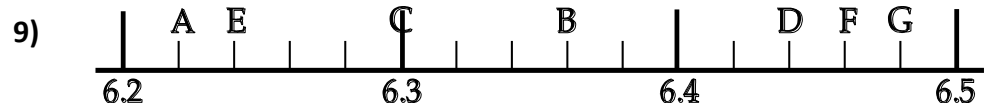
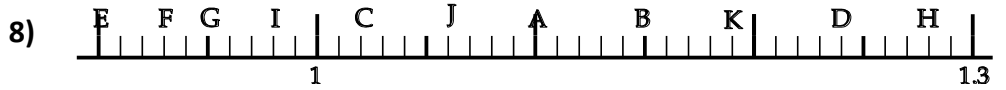


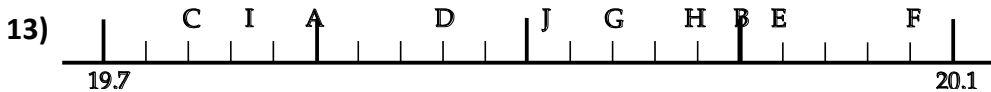
Reading Scales

Exercise 1

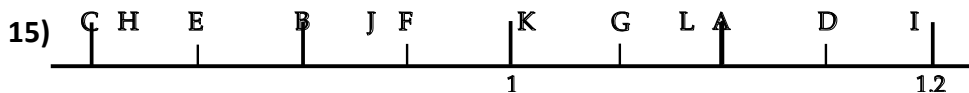
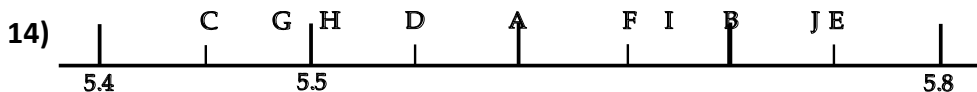
In each of the following questions, write down the number marked by each letter (eg A = 4.62)





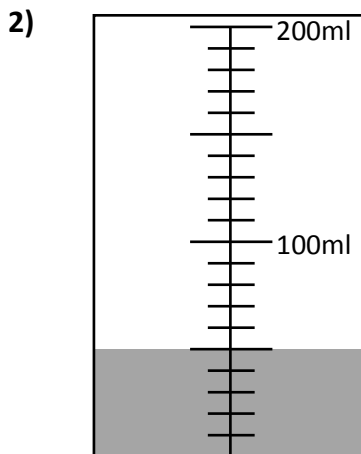
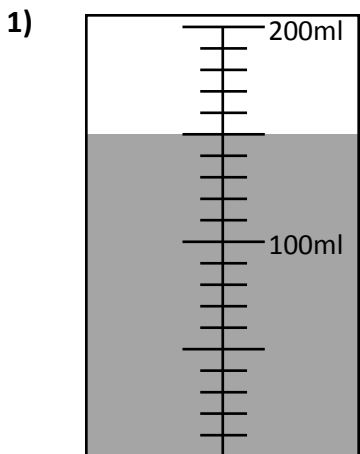


In Questions 14 and 15 below, some of the letters will have to be estimated as best you can.

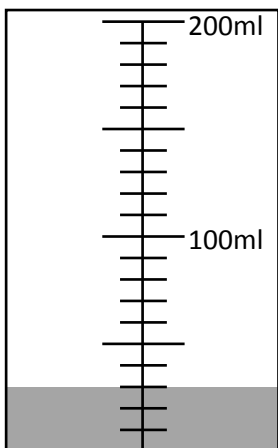


Exercise 2

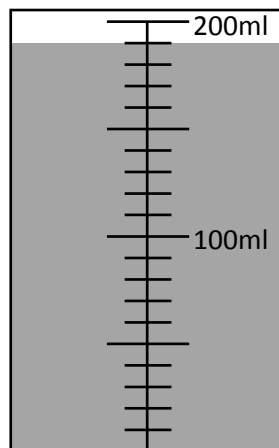
Write down how much water is filled in these containers



3)

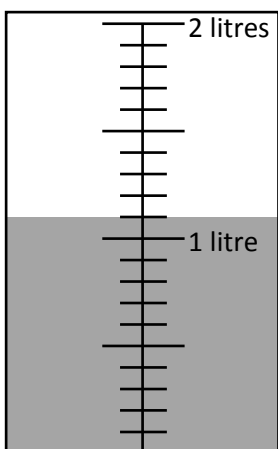


4)

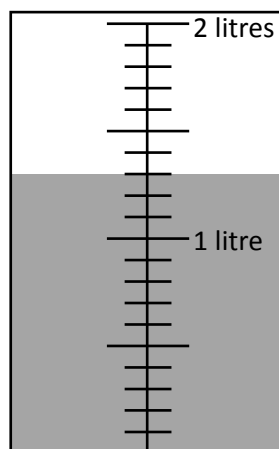


CAREFUL With these two!!

5)

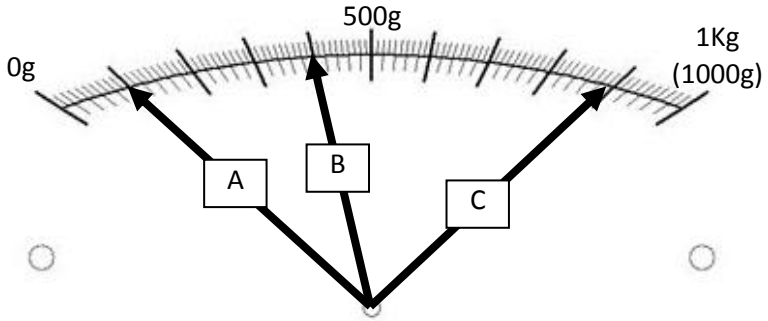


6)

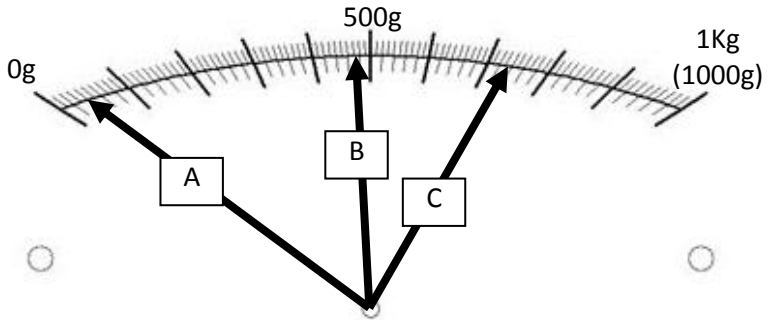


Write down what weight each arrow on the scales is pointing to

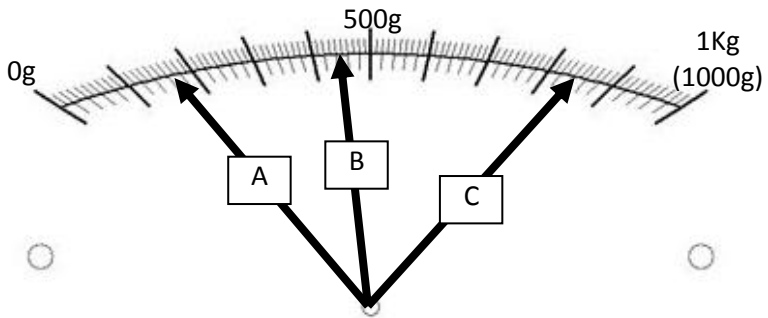
7)



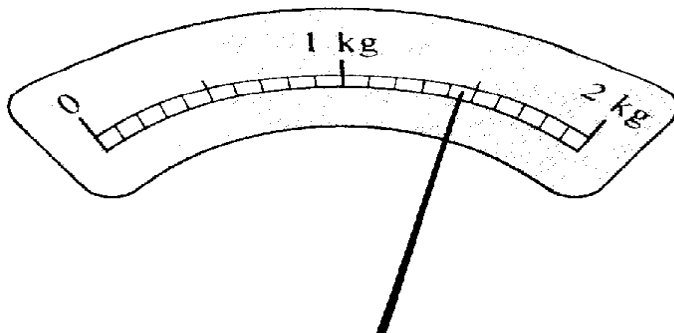
8)



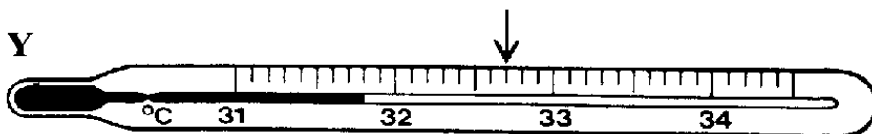
9)



16) What reading is indicated by the pointer on this weighing machine?

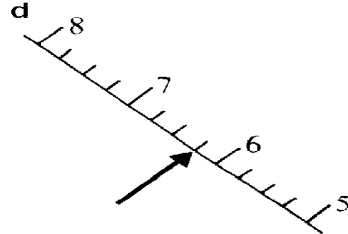
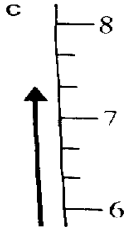
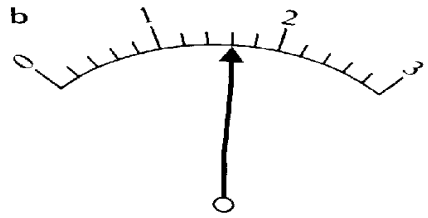
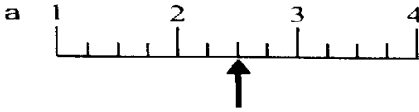


17) a) What reading is shown in each thermometer?

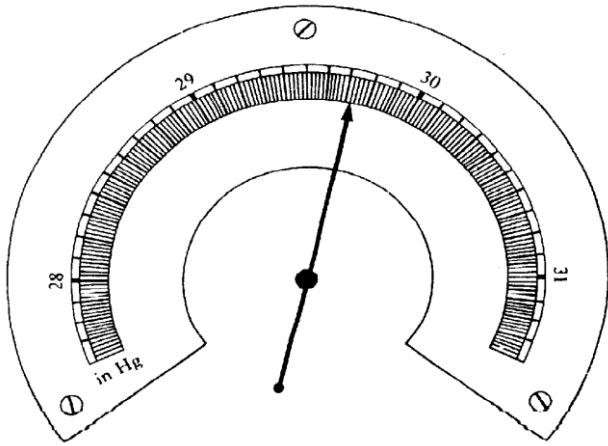


b) What temperatures are indicated by the 2 arrows on the thermometers?

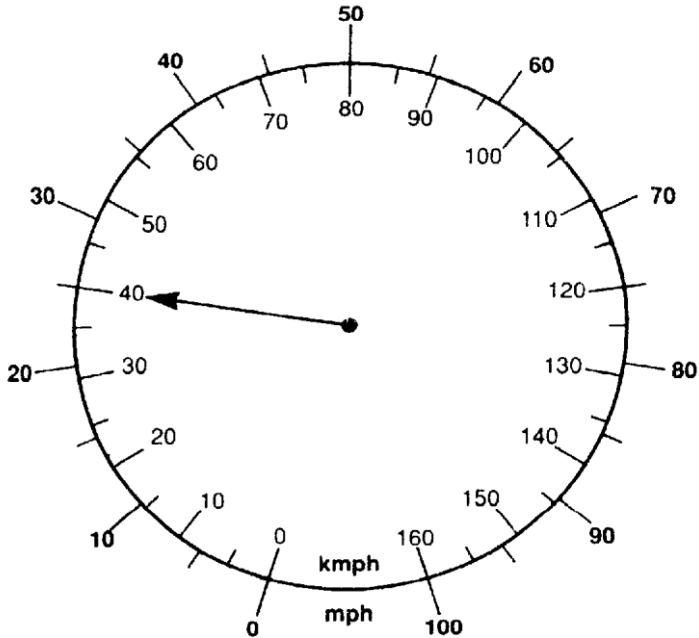
18) Write down the reading to which each arrow points in these diagrams.



19) What is the reading on this barometer scale?



20) a) What is the reading in mph shown on the speedometer?



b) The max speed limit for motorways is 70 mph.
Use the speedometer scales to find this speed in km per hour.



c) The standard speed limit in built up areas is 30 mph.
Use the speedometer scales to find this speed in km per hour.

d) The national speed limit for single roads is 60 mph.
Use the speedometer scales to find this speed in km per hour.



e) The speed limit for a bus on a dual carriage way is 60 mph.
Use the speedometer scales to find this speed in km per hour.