

Calculators are permitted but working must be shown.

Standard deviation:

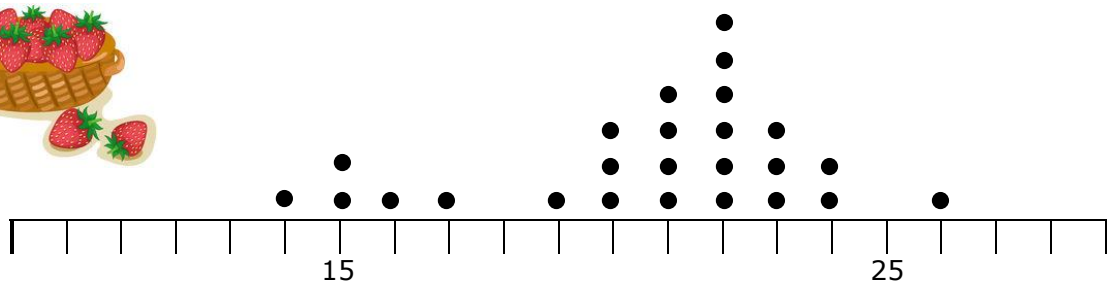
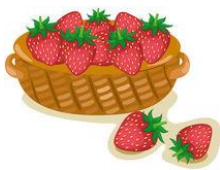
$$s = \sqrt{\frac{\sum(x - \bar{x})^2}{n-1}} = \sqrt{\frac{\sum x^2 - (\sum x)^2/n}{n-1}}, \text{ where } n \text{ is the sample size.}$$

Essential knowledge:

1. Make a 5-figure summary for the following data:

2 3 6 7 8 8 10 11 12 15 17

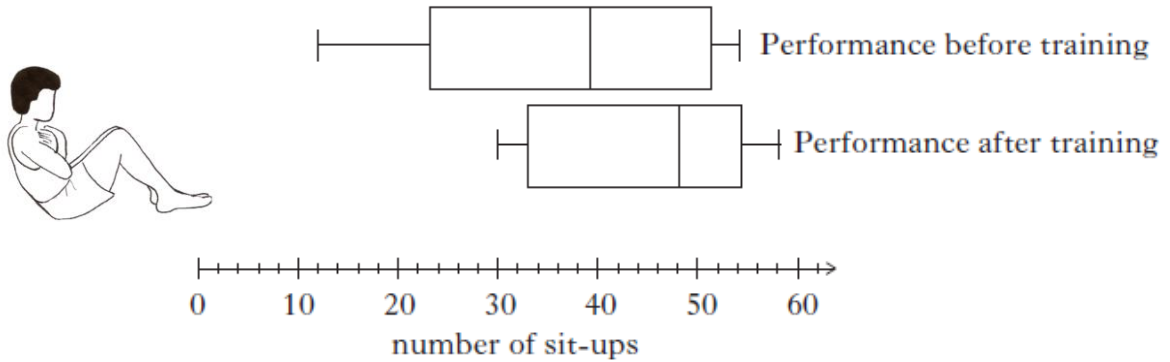
2. Construct a box-plot and calculate the range, interquartile range and semi-interquartile range for the data in question 1
3. Calculate the mean and standard deviation for question 1
4. A supermarket sells baskets of strawberries. A spot check was carried out. The results of the inspection are shown in the dot plot.



- (a) What is the range of strawberries for this spot check?
- (b) What is the modal number of strawberries in a basket?
- (c) What is the probability that a pack will contain 20 strawberries?

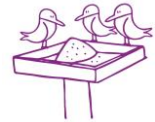
Unit level:

5. At a training camp, athletes are tested on how many sit-ups they can do in one minute before and after a week's training.



- (a) Calculate the interquartile range for before and after training.
- (b) Make **two** valid statements to compare the performances.
6. During his lunch hour, Luke records the number of birds that visit his bird table. The numbers recorded last week were:

28 32 14 19 18 26 31



- (a) Find the mean and standard deviation for this data.
- (b) Over the same period, Erin also recorded the number of birds who visited her bird table. Erin's recordings had a mean of 25 birds and a standard deviation of 5 birds. Make **two** valid comparisons between these recordings.
7. The stem and leaf diagram shows the number of minutes on average spent on homework per night by a group of S1 pupils:



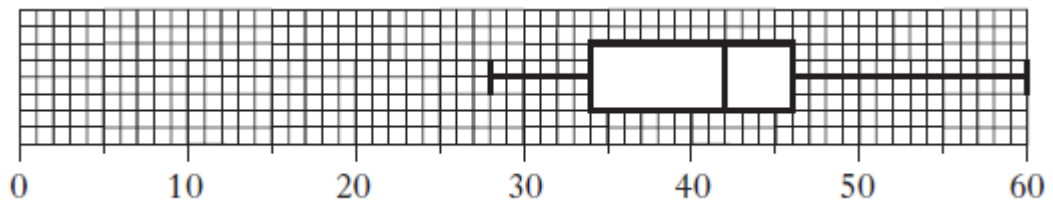
1	0 5 5 5
2	0 1 2 2 3 5 5 8 9
3	0 5 5 6 6 7 8 9 9 9
4	2 4 4 5 6 7
5	0

$n = 30$

1 | 0 represents 10 minutes

- (a) Draw a boxplot to illustrate this data.

- (b) The boxplot below illustrates the time spent on homework for a group of S4 pupils:



Compare the two boxplots and make a comment

Assessment level:

8. The number of goals scored one weekend in the Premier League is shown below.

0	1	1	2	1	0	0	5	0	1	3
0	2	2	1	1	3	0	0	2	4	1

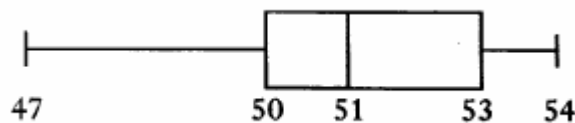
- (a) Construct a dot plot for this data.

- (b) The shape of the distribution is:
- A – Skewed to the right
 - B – Symmetrical
 - C – Skewed to the left
 - D – Uniform



Write the letter that corresponds to the correct shape.

9. A random check is carried out on the contents of matchboxes. A summary of the results is shown below.



What percentage of matchboxes had fewer than 50 matches?

- 10.** A group of people attended a course to help them stop smoking. The table below shows the statistics both before and after the course.

	<i>Mean number of cigarettes smoked per person per day</i>	<i>Standard deviation</i>
Before	20·8	8·5
After	9·6	12·0

Make **two** valid comments about these results

- 11.** A furniture maker investigates the delivery times, in days, of two local wood companies and obtains the following data.

<i>Company</i>	<i>Minimum</i>	<i>Maximum</i>	<i>Lower Quartile</i>	<i>Median</i>	<i>Upper Quartile</i>
Timberplan	16	56	34	38	45
Allwoods	18	53	22	36	49

- (a) Draw an appropriate statistical diagram to illustrate these two sets of data.
- (b) Given that consistency of delivery is the most important factor, which company should the furniture maker use? Give a reason for your answer.