

Charity No: SC048242

north lanarkshire
disability forum

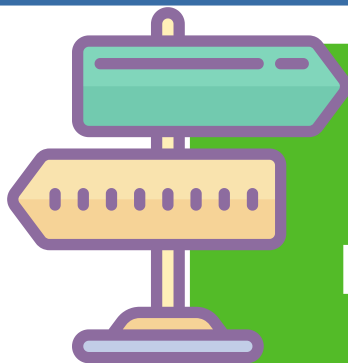
WE CAN HELP WITH

**Self-Directed Support
(SDS)**



**ASN-inclusive
activities + groups**

**Help with benefits
inc. Child Disability Payment**



**Signposting to
relevant organisations**

phone us at 01698 275710 or email:

Gemma McDonald - gemma@nldforum.org.uk

Pauline Pew - pauline@nldforum.org.uk