



Sacred Heart Primary,

Summer 2023

Sacred Heart and Orbiston Nursery class

# NEWSLETTER

Dear Parents /Carers and friends,

Staff and pupils continue to delight us all with their new learning each day. We have all settled well in our daily routines and we are so proud of our pupils and staff as we engage pupils every day to do their best in all aspects of school life. Our weather has, on the whole been good to us. The Summer term hopefully will be sunny and warm so that we can enjoy learning and teaching outdoors.

COVID awareness is still very important when you are feeling symptoms or are unwell. This also means that we are still cautious and hope all families know to stay off until symptoms cease, which is a much shorter period of time and then a return to school would be in order, once fit and well. As always keep in touch with the school office if any absences occur or seeking advice.

We continue to appeal for your support with;

- Parents and carers 'dropping off' and 'picking up' their children beyond the perimeter fence on Liberty Rd or the back gate
- ALL authorised visitors to follow the guidance from staff
- Pupils are accessing their Zones via any of the open gates;  
Early Years / Nursery classes **RED ZONE**  
P1-4 **YELLOW ZONE**  
P5-7 **GREEN ZONE**
- Pupils arriving in their zones as near to the 9am start BELL as possible
- Pupils are supervised in all playgrounds by staff and SMT from 8.50am
- Breakfast Club children walk to the main entrance door of the school for 8.20 am on their own.  
Breakfast Club staff are waiting at the main door of the school.
- **PLEASE DO NOT ACCESS THE SCHOOL CARPARK**, this is unsafe for pupils to enter at any time.  
**A SAFE PUPIL WALKWAY from LIBERTY ROAD to the school door**
- **OUTDOOR LEARNING and PE are still accessed by Staff for their class (weather permitting).**
- Please be aware of your child's PE day so that they are ready for the activities ie Polo shirt already on, shorts under skirts / trousers for a quick change. **(no football colours)** Gym shoes to change into from outdoor shoes.

**WE STILL ARE HEALTH CONCIIOUS**

**WE ARE ALL IN THIS TOGETHER!**

**PARENTS and CARERS, YOUR COOPERATION IS ESSENTIAL AND MATTERS TO US ALL**

**FULL ASSEMBLIES are GO!**

## **URGENT ACTION FOR EXCELLENT ATTENDANCE**

Your child's ATTENDANCE matters. NLC's target for attendance is 95% or more. This is then an achievement of excellent attendance and consistent days where your child is NOT missing out on Learning and Teaching and can remember from day to day what they have learned. From this daily start, your child will not be worried about lessons missed and will be able to build confidence in what they can achieve and learn more, every day.

CNHS Cluster have agreed that improvement for attendance is incredibly important. **Sacred Heart Pr, St Gerard's Pr, Holy Family Pr, St JPll Primary and of course Cardinal Newman High School** will form an attendance panel to monitor closely unauthorised absences, holidays taken through the school terms and unexplained absences not reported and that keep our pupils from their school.

This MUST stop, to help support our pupils through their Educational career, where they achieve academically and feel confident that by excellent attendance and guidance from home, they can build on their skills to fulfil all the tasks teachers diligently and daily plan for them. Every school in our Cluster will work collectively to MONITOR and stamp out frequent absences and **unauthorised holidays taken in school learning time**. We will continue to monitor your child's progress in this as you will see reported in their Summer Report.

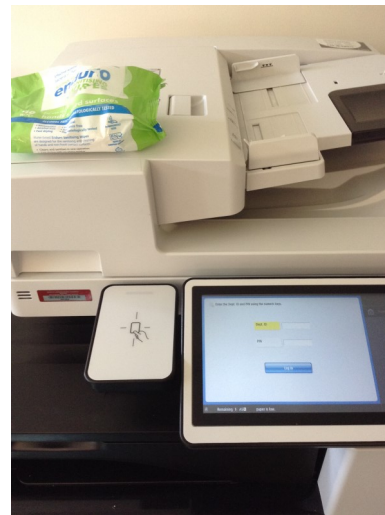
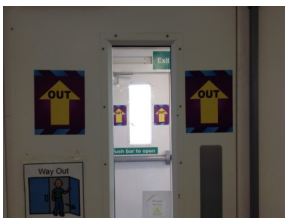


**Medical Room / Isolation Room if someone has symptoms**

**Sanitisation station, 'Protect and Trace' records**



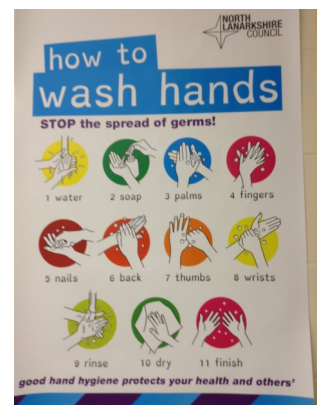
**SIGNAGE KEEPING US SAFE AROUND THE SCHOOL**

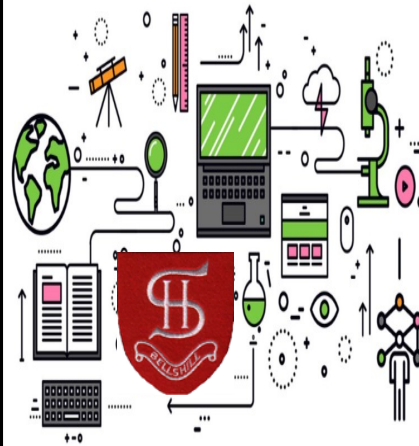


**Reminding us to wipe down TOUCH POINTS after use.**



**WASH HANDS AND SANITISE REGULARLY THROUGHOUT THE DAY**





**WE ARE A RIGHTS RESPECTING SCHOOL and Nursery**

We are delighted towards **GOLD**. Led we are very much achieve this final goal.

to share our **SILVER** achievement for RRS and are now working by Miss Rossetti and the staff and pupils of our establishments, looking forward to working with you all in 2023 / 2024 to

**WE ARE A STEM SCHOOL and Nursery**

We love STEM time with Mrs Sinclair ADHT and our Teachers. We will continue to focus on STEM in our classwork to help us understand **Science, Technology, Engineering and Mathematics** in the workforce.

We are also a Digital school and in term 4 we will be looking for accreditation in our abilities to achieve success using ICT. By looking at the Digital aspects embedded in our every day tasks for all our efforts and appreciating this topic will continue next year with staff and pupils alike, allowing further developing our skills at SHP.



**Welcome to our new Primary 1 starts in August 2023**

Our Transition programme will start on **Wednesday 10th May 2023 at 1.45pm** in the school hall, inviting all our new P1 Parents and Carers to a presentation with Mrs Somerville HT and Mrs Sinclair ADHT while all new P1 pupils will explore the school and the classrooms and meet their Teacher. We will share information about starting Primary and the things to expect in August. This presentation will also help you understand the important role Parents and Carers have in supporting your child to have a positive engagement.

Invitations are also out for a 'New P1 first lunch taster' in the school with 1 adult supporting on 11th May at 11am.

In August / September you will be invited to the school to learn how to support your child in Literacy and Numeracy. Dates to be confirmed in our new term in August 2023.

**Sports' Day and Summer Disco, Dress Down Days**

Weather permitting

(NO football colours)

**SUMMER DISCO - £1**

**SPORTS' DAY**

Class times tbc

**Thurs 8th June 2023**



**Friday 9th June 2023**

**Rm 7, 9, 10, 11, 12 1.30pm - 2.15pm**

**Rm 14, 15, 16 2.15pm - 3pm**

**EDUCATION OUTINGS - Summer 2023**

<u>Class</u>	<u>Date</u>	<u>Location</u>
Room 7 & 9	Tuesday 6 <sup>th</sup> June 2023	Museum of Rural Life
Room 10 & 11	Thursday 15 <sup>th</sup> June - 2023	People's Palace - Glasgow Green
Room 12	Monday 15 <sup>th</sup> May 2023	Science Centre
Room 14, 15 & 16	Monday 5 <sup>th</sup> June 2023	Science Centre

**No charge to pupils—Wear full school uniform**



**IMPORTANT DATES IN TERM 4**

<b>Teddy Bear Picnic</b> Nursery & Primary 1 Tuesday 9 <sup>th</sup> May.	<b>Room 12 Outing</b> The Science Centre - Monday 15 <sup>th</sup> May.	<b>Communion Sacred</b> Heart Church Saturday 20 <sup>th</sup> May.
<b>Room 14, 15 &amp; 16 Outing</b> The Science Centre - Monday 5 <sup>th</sup> June.	<b>Room 7 &amp; 9 Outing</b> The Museum of Rural Life- Tuesday 6 <sup>th</sup> June.	<b>Wear Yellow Walk for St. Andrews Hospice</b> Wednesday 7 <sup>th</sup> June.
<b>Sports Day</b> Thursday 8 <sup>th</sup> June (weather permitting)	<b>Summer Disco</b> Friday 9 <sup>th</sup> June 1.30pm -3pm.	<b>Room 10 &amp; 11 Outing</b> The People's Palace - Thursday 15 <sup>th</sup> June.

**The cost of our educational outings this year total £3050, our school are delighted to be able to cover the full cost of these experiences.**

## Term 4

As parents and carers, we know you will be focused on the skills to help your child learn through their Homework support from you, such as learning;

Reading, spelling, common words, mental agility in times tables and number bonds, preparing 'show and tell' topics, research with digital learning and accessing GLOW, NL Digital Learning etc

### Dress Down Days

### Sports Day—no cost

Sports wear on Thursday 8th June 2023 weather permitting, If weather is unsuitable, please have sports' wear ready in their school bag for better weather.

### Summer Disco

£1— Friday 9th June 2023

Garden Ground Force classes—bedding plants and soil and the great outdoors.

If you could donate some bedding plants, compost or seeds to help fill out our planting tubs, we will be very grateful.

Summer Report Cards due out Wk of 19th June 2023

FOLLOW US ON TWITTER [@sch\\_sacredbells](https://twitter.com/sch_sacredbells)

E-Mail [enquiries-at-sacredheart@northlan.org.uk](mailto:enquiries-at-sacredheart@northlan.org.uk)

Telephone : SHP, SH and Orb Nursery class— office  
01698 274903





Healthy Snacks for Kids



## Sacred Heart Church

### First Holy Communion

P4 pupils are making their First Holy Communion on Saturday 20th May 2023 at the 11am Mass with Fr Parkes. Thank you to all our P4 pupils, their families, Mr Carroll the organist and our staff for all their support and guidance to make this event the most memorable day.

All pupils to be at SHP Church House no later than 10.40am prompt.

God Bless you all.

### P7 Graduation Mass

16/6/23

11am



## Lenten Charity Totals

Thank you to our P7 Staff and pupils for designing their Lunchtime Games and raising money.

Including our £1 Dress Down Days on Fridays we raised with your help

**£961.82**

We are still waiting for the SCIAF Boxes to be counted and for us to receive the final total raised there too which will also be added to the final total.

Thank you for your support.

Cheques to be sent to; SCIAF, St Andrew's Hospice; Wear Yellow Day and Teddy Bear's picnic and Let the children Live



We are a health promoting school and Nursery Class. We have many **fresh chilled water fonts** and encourage staff and pupils to refresh themselves throughout the day. Please **encourage fruit and healthy snacks for breaks**.

We are also a **NUT FREE Establishment**. Please check biscuits and spreads that they do **NOT contain NUTS**.

## Packed lunch boxes, uniforms and bags

Please label all belongings to ensure that they will be matched back to their owners if left behind. So many pupils find it hard to look after their belongings.



Without a label or name tag, it is very difficult and time consuming to reunite the owner with their property. With 240 pupils, all wearing the same uniform, they can misplace cardigans, jumpers and coats easily.

2 minutes to help. Thank you to everyone who has

## Primary 7

### Transition Days at CNHS

There are a few Secondary schools hosting transition for our P7 pupils and these are well underway.

**2 Day visits for P7 pupils to CNHS;**

**Mon 15th May**

**Friday 19th May**

A letter will inform families of the details soon. Good luck to all our P7 pupils with their Transition meetings and I know their good behaviour and attitude will be appreciated by all receiving staff.



## School holidays and term dates 2023 / 2024

All schools and council-run early years facilities will be closed on Monday 8 May 2023 for the King's coronation.

May 2023



May holiday: Monday 1 May 2023

In-service day: Tuesday 2 May 2023

King's coronation: Monday 8 May 2023

May weekend: Friday 26 May 2023 to Monday 29 May 2023 (inclusive)



June 2023

Schools close: Wednesday 28 June 2023 at 1pm

August 2023



Teachers return and in-service day: Monday 14 August 2023

In-service day: Tuesday 15 August 2023

Pupils return: Wednesday 16 August 2023

September 2023

September weekend: Friday 22 September and Monday 25 September 2023 (inclusive)

October week: Monday 16 to Friday 20 October 2023 (inclusive)

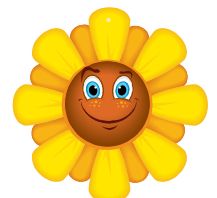
November 2023

In-service day: Monday 13 November Schools close: Friday 22 December 2023 at 2.30pm  
Christmas and New Year holidays: Monday 25 December 2023 - Friday 5 January 2024 (inclusive)

<https://www.northlanarkshire.gov.uk/schools-and-learning/school-holidays-and-term-dates/school-holidays-and-term-dates-2023-2024>



North Lanarkshire Council ; Term dates and Holidays



## August 2023

Teachers return and in-service day: Monday 14 August 2023

In-service day: Tuesday 15 August 2023

Pupils return: Wednesday 16 August 2023

## September 2023

September weekend: Friday 22 September and Monday 25 September 2023 (inclusive)

## October 2023

October week: Monday 16 to Friday 20 October 2023 (inclusive)

## November 2023

In-service day: Monday 13 November

## December 2023 - January 2024

Schools close: Friday 22 December 2023 at 2.30pm

Christmas and New Year holidays: Monday 25 December 2023 - Friday 5 January 2024 (inclusive)

## February 2024

Mid-term break: Monday 12 February and Tuesday 13 February 2024

In-service day: Wednesday 14 February 2024

## April 2024

Schools close: Thursday 28 March 2024 at 2.30pm

Spring holiday (Easter): Friday 29 March - Friday 12 April 2024 (Inclusive)

- Good Friday 29 March

Easter Monday 1 April 2024

## May 2024

In-service day: Thursday 2 May 2024 (to coincide with UK Parliamentary elections, but may be subject to change)

May holiday: Monday 6 May 2024

May weekend: Friday 24 May 2024 and Monday 27 May 2024 (inclusive)

June 2024      Schools Close: Wednesday 26 June 2024 at 1pm

2023 / 2024 dates cont



December 2023 - January 2024

Schools close: Friday 22 December 2023 at 2.30pm  
Christmas and New Year holidays: Monday 25 December 2023 - Friday 5 January

2024 (inclusive)

February 2024



Mid-term break: Monday 12 February and Tuesday 13 February 2024  
In-service day: Wednesday 14 February 2024

April 2024

Schools close: Thursday 28 March 2024 at 2.30pm  
Spring holiday (Easter): Friday 29 March - Friday 12 April 2024

(Inclusive)

- Good Friday 29 March  
Easter Monday 1 April 2024



May 2024

In-service day: Thursday 2 May 2024 (to coincide with UK Parliamentary elections, but may be subject to change)  
May holiday: Monday 6 May 2024  
May weekend: Friday 24 May 2024 and Monday 27 May 2024 (inclusive)

June 2024



Schools Close: Wednesday 26 June 2024 at 1pm



<https://www.northlanarkshire.gov.uk/schools-and-learning/school-holidays-and-term-dates/school-holidays-and-term-dates-2023-2024>