



Sacred Heart Primary

November 2022

Sacred Heart Nursery and Orbiston Nursery

NEWSLETTER

Telephone Sacred Heart school office—01698 274903

Dear Parents /Carers and friends,

Welcome to our Winter Newsletter. It was lovely to see so many families back in the school to meet staff for Parents' Evening. If you were unable to attend and wish to speak to your child's teacher for an update on their progress please contact the school office before the end of November and we will do our best to accommodate with another opportunity.

Sacrament of CONFIRMATION

Congratulations to our P7 pupils who made their Confirmation in Sacred Heart Parish Church on Thursday 4th November 2022. Thank you to Mrs Poutney and Miss Brown for their hard work in preparing the children for the Sacrament. We thank Bishop Toal, Fr Parkes, parents, God parents and staff for their support throughout the P7's preparation.



Staffing

As you know Mrs Somerville is off recovering from a knee replacement. We are delighted to say she is home and resting. We continue to wish her well and a speedy recovery. We welcome back Mrs McCann from MAT leave. She will be in classes across the school supporting in a variety of ways.

LOST ITEMS

Please remember to have all pupils' clothing and belongings labelled in-case they become lost. We still have many cardigans, jackets and jumpers handed in which are found in playgrounds and sent to the school hall for identification, however very few can trace their owners as they are not labelled and they all look the same. Please help us to help you find any lost property and label the items that belong to your child.

HEALTHY SNACKS

For those children who have packed lunches, please continue to label your packed lunch boxes. We are delighted to see all the varieties of healthy snacks, sandwiches, wraps and drinks. Remember we are a **NUT FREE SCHOOL**. Please check all sweets and snacks to ensure that **NO NUTS** are in our school. We have several fresh water fountains and always promote drinking water throughout the day to refresh all our staff and pupils. **NO cans either.**

DIGITAL SCHOOL

Remember to login to GLOW when staff issue digital homework. Please contact the school office if you need help with logging on. We are more than happy to assist, to allow full participation at all times.

HALLOWEEN

Halloween was packed all week with Arts, Crafts, Curriculum links and TWITTER and GLOW coverage indoors and out. Take a peak to see what the classes have been up to [@sch_sacredbells](https://twitter.com/sch_sacredbells).

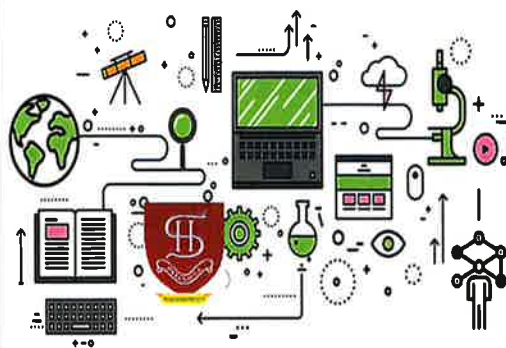
St Andrew's Day

The children of Sacred Heart Primary invite you to share in their St Andrew's Day celebrations by attending a coffee morning in the school on **Wednesday 30th November 9.30am-10.15am**. Families and friends of the school are invited to our performance of Scottish themed songs and poems. Tea, coffee and treat will be on offer for a small donation to School Fund, if you are able to. We look forward to seeing you all there.



TEMPEST PHOTOGRAPHER

The photographer will visit the school on Thursday 10th of November to take individual photographs and possibly class photographs for 2022 / 2023.



WE ARE AIMING TO BE A DIGITAL SCHOOL

From Lockdown we utilised New Technologies to access GLOW, TEAMS, VIRTUAL CLASSROOM, BLOGS, NEWSLETTERS, SUMDOG, TWITTER etc Staff, Pupils and Parents all enjoyed learning and communicating digitally. We have continued to access digital learning now that we are back in class. No matter what changes lie ahead our blended curriculum will be our fall-back if there is another Lockdown and we know that our pupils and families are more confident now in accessing their way around the blended curriculum.

Christmas 2022

Now COVID-19 restrictions have been lifted we are delighted to be able to celebrate Christmas in true Sacred Heart style!!

Christmas Fayre: Wednesday 7th December 2022 3.30pm-5.00pm information to follow.

Christmas Lunch: Thursday 8th December 2022– order forms to follow. Please note if your child does not order a Christmas lunch, a packed lunch provided from home is required. Children can wear a Christmas jumper/t-shirt that day if they wish.

Christmas Parties 2022:

Monday 12th Dec	Room 10 & 11
Tuesday 13th Dec	Room 12 & 14
Wednesday 14th Dec	Room 15 & 16
Monday 19th Dec	Room 7 & 9
Tuesday 20th	Nursery

Christmas Panto: We are very excited to be visiting Motherwell Theatre to see this years panto ‘Cinderella’. We have been able to cover the cost of this for all school pupils using our PEF budget therefore there will be no charge to our families. Children will be provided with a snack for this event. Pupil should wear full school uniform on this day.

Christmas Carol Service: Our Carol Service will take place on Thursday 22nd December 2022 at 11am in Sacred Heart Church. Our Primary 1’s will spotlight the Nativity Story with support from their Buddies. All welcome to join us.

Dress Down Fun to support our Christmas Fayre

We have planned Dress-down Days to help support collections for our Christmas Fayre. All donations are very much appreciated.

Friday 11th November: Pre-loved uniforms, Christmas jumpers, Halloween costumes, winter jackets.

Friday 18th November: Non-perishable groceries, bottles, bubble bath, shampoo, sauce (if alcohol an adult should deliver this to the school)

Friday 25th November : Pre-loved games, toys, book etc.

Friday 2nd December: Shop bought cakes and biscuits (no nuts for Health and Safety reasons) to support our Tea Room.

Class Assemblies

Teachers are working hard with your children daily in class so we have arranged dates for parents/carers to be invited to a Class Assembly for the children to share a snapshot of their learning. **Room 10** will be starting us off on Wednesday 9th November 2022 at 9.30am.

Room 11 Monday 5th December 2022

Room 12 Wednesday 25th January 2023

Room 15 Wednesday 22nd February 2023

More dates to follow. Good luck everyone!

Parent Council

Thank you to the parents/ carers who have come forward to be part of our Parent Council. Our first meeting will be on Wednesday 16th November 2022 at 3.30pm in the school. We NEED a few more parents to allow for this to run so if you can spare an hour once a term to support this please contact Mrs Harley. Unfortunately, we are unable to provide any childcare for this meeting and children cannot attend.

Christmas Fayre

We are delighted to be hosting a Christmas Fayre this year. The classes will be producing some lovely Christmas crafts for you to purchase and we plan to have activities for the whole family to enjoy. Tickets will be on sale soon.

KEEP IN TOUCH WITH US... WE ARE HERE TO HELP!

The staff of Sacred Heart Primary and Sacred Heart and Orbiston Nursery Class are always here to help. We will do all we can to ensure that questions, for help with learning/work, support with Free School Meals, enquiries etc. are all answered as soon as possible. By now, I am sure that you will know the various ways to keep in touch, but just to remind you, our contact details are below. You can also...



- ◆ **SIGN UP FOR PARENTS' PORTAL.** We want ALL of our Parents/Carers to do this, so please follow the instructions in this newsletter.
- ◆ **FOLLOW US ON TWITTER.**
- ◇ **E-Mail: enquiries-at-sacredheart@northlan.org.uk**
- ◇ **Telephone : Sacred Heart Primary office 01698 274903**

ORBISTON COMMUNITY HUB

Keep an eye on the dedicated website for updates on our new community Hub for the Orbiston Area. <https://orbistoncommunityhub.com/>. If you have any questions, please contact HubDeliveryTeam@northlan.gov.uk

PFA

We have missed the support of our P.F.A. due to COVID-19. We are looking to re-establish this group to support fundraising activities. The first task we are asking our P.F.A. to do is organise and host our tombola stall at the Christmas Fayre. If you can offer any help please contact the school office.

GROWTH MINDSET

Staff and pupils, continue their focus on a positive Growth Mindset to motivate all our learning and teaching efforts. Our assemblies and TWITTER have reported to parents and carers about our work here and our displays around the foyer are a reminder of the importance of this philosophy encouraging a positive engagement in learning.

ATTENDANCE AT SCHOOL

We are continuing to focus on promoting good attendance at school. Weekly, SLT monitor the attendance for all classes and discuss with CT's and office staff why children are absent. Please ensure you are reporting any unavoidable absences to allow for us to keep records up to date. Parents/carers of children who's attendance is falling well below NLC's target of 95% maybe be contacted by SLT to discuss this further. Your support on this matter is greatly appreciated.

INTERIM REPORTS – December 2022

Staff will complete an Interim Report for your child and it will be sent to you at the end of Term 2. This report will be based on;

- Focus on targets set after Parents' Evening
- Work achieved in class and effort
- Consolidation and revision of skills
- Attitude to learning
- Homework achievements

If you have any points you wish to discuss after this report is issued please contact the school office after the Christmas break.

BOOK FAIR 2022

Thank you to everyone who bought a book at the BOOK FAIR. The children were amazed at the choices and hopefully they were also happy with what they have been reading. With your support, books sold came to £680.30. The school then receives £348.10 in commission. We have already purchased new novels for our Upper school children and will be spending the rest on the latest books to support our school learning. Thank you.

COMMUNITY LEARNING and DEVELOPMENT (CLD)

We welcome Lynsey Hughes CLD School worker to the Bellshill area. Lynsey has already started working with some of our families within the school and community. Look out for the fliers if you are interested in getting involved!

SCHOOL DINNERS - £3.10

For those who pay for their school dinners, a school meal is £3.10. Please ensure you are checking the balance of your child's card regularly to cover payment. We also have no lunchtime crossing patrol so we are discouraging pupils from going home for lunch. If they must go home it is the responsibility of the parents / carers to ensure their safety as they make their way to and from home to school.

School menu below.

<https://www.northlanarkshire.gov.uk/index.aspx?articleid=5594>

Remember:

All P1 to P5 pupils are entitled to a free school breakfast up to the value of £1 and lunch up to the value of £3.10.

HT CHRISTMAS DRAWING DESIGN 2022

All pupils are invited to design a Christmas card for the school which, if chosen will be reproduced and sent out to the community as our school Christmas Cards. Closing date Fri 22nd November . Each design will be displayed to brighten up our Christmas celebrations . Good luck everybody!



INSET DAY

There will be an In-service day on Monday 14th November 2022. Children should not attend school that day. The school will re-open on Tuesday 15th November for the Breakfast Club at 8.20am with a school start at 9am.

INCLEMENT WEATHER – in extreme circumstances

As a courtesy, staff will be directed by SLT to supervise the playgrounds from 8.50am whatever the weather. When weather is extremely challenging in the Winter months and if staffing ratios allow, SLT will direct appointed staff to escort classes to their classrooms, but NOT earlier than 8.50am. ALL pupils should report to their ZONES as near the bell and any coordination will take place from there.

School finishes on Thursday the 22nd of December 2022 at 2.30pm for our Christmas holidays.

School will re-open on Monday 9th January 2023 for the breakfast club at 8.20am and the school New Year start at 9am

On behalf of the staff of Sacred Heart Primary School and Sacred Heart and Orbiston Nursery Class may I take this opportunity to wish you all a Happy and Peaceful Christmas.

Thank you for your support in 2022 and we look forward to working with you throughout 2023.

Keep safe and well.

Mrs A Harley, Acting Head Teacher

GLOW – A Guide for Parents

Glow - What is it?

Glow is the world's first national safe and secure online community for pupils, parents and teachers. Glow gives access to information and activities including interactive educational games, revision papers, links to other sites and news features. These resources support pupils to learn in innovative and exciting ways. Glow has a number of key features and access to, or restrictions to, these features is dependent on the permissions set by the local authority. Not all features are relevant to all users.

How does it work?

Each child or teacher is given unique logins to access this trusted, safe environment where they can create personalised programmes of work, share resources or help parents understand and become more involved in their children's learning by keeping up to date with their progress and achievements.



How does it assist my child's learning?

For children, Glow is:



- ◆ A tool to access the benefits of the internet and a range of online learning resources
- ◆ A space for collaborating with other learners
- ◆ A facility to connect with teachers about learning
- ◆ A space to create and innovate as you learn

Why use it?

The constantly evolving digital world has transformed the way in which our children communicate, network, seek help and access information to learn. Glow provides tailored resources, appropriate to the children in a safe, secure and engaging way. It is particularly useful in exceptional times of school closures, extreme weather etc.

What are the benefits?

Glow is a secure and safe setting. It will facilitate continuity of learning during school closures.

How does my child get access?

Your child will be given access by the school via a secure username and password. This gives your child access to information and resources suitable to them.

A pupil's access to, and view of, Glow will be different from a teacher's view.

Can my child access Glow anywhere?

As it is web-based, Glow can be used wherever an internet connection is available, such as on a desktop, laptop, tablet or mobile device.

All your child needs is their unique username and password.

How can I, as a parent, use Glow?

You will be able to view and access the same information as your child.

Through your child's password, you have access to all the national material. Parents cannot be given separate user names and passwords for Glow.

Wider digital access

Your child will also have been given usernames and passwords for other online learning platforms that the school has deemed appropriate; these could include Sumdog, Active Learn etc. These are unique to your child and teachers will continue to monitor these.



PARENTS PORTAL *Please read this information carefully and act upon it!*

In support of North Lanarkshire Council's ambition to continue improvement in parental communications and its broader Digital NL plans we have been working with national organisations to develop a "Parents Portal".

The portal has been and will continue to be developed to provide parents with a clear insight to their child's education and to support transactional communications between parents and the school, this includes attendance, reports and school information.

A national consultation exercise was conducted to include the views of parents in the design of the portal. A copy of the report can be found here:

<http://www.improvementservice.org.uk/parent-views-of-school-engagement.html>

The development was piloted last session in a small number of schools, when it was within its first phase. Since then more features have been added and North Lanarkshire has moved forward its own digital communication

This first phase will introduce basic information about the school and include services such as

- ◆ online school payments,
- ◆ attendance,
- ◆ placing request forms,
- ◆ the annual data check
- ◆ general school information

parentsportal.scot

As the development of the Portal continues, it is hoped to add features such as reporting absences and permission slips for excursions, etc.

We are live **NOW** on Parents' Portal... sign up and try using some of the features. All services... **ONE** password!

Further details will follow as these services become available and the best way to make them available to you is for you to sign up to the portal.

Instructions for this can be followed in video available via this link:

<http://bit.ly/ParentsPortalNLC>

This portal will become one of the main communications between schools and parents across North Lanarkshire Council and we encourage you to sign up to this service. It is a one stop shop to many of our current and future communications.

We have had a few drop-in sessions to allow Parents/Carers the opportunity to get support with signing up. However, if you have missed this and your still require support, please contact us.

FULL INSTRUCTIONS ON HOW TO SIGN UP ARE AVAILABLE ON THE LINK ABOVE OR CONTACT THE SCHOOL OFFICE.

NLC School Holiday 2022-23

October 2022

October week: Monday 17 to Friday 21 October 2022 (inclusive)

November 2022

In-service day: Monday 14 November 2022

December 2022 - January 2023

Schools close: Thursday 22 December 2022 at 2.30pm

Christmas and New Year holidays: Friday 23 December 2022 to Friday 6 January 2023 (inclusive)

Schools return: Monday 9 January 2023

February 2023

Mid-term break: Monday 13 February 2023 and Tuesday 14 February 2023

In-service day: Wednesday 15 February 2023

April 2023

Schools close: Friday 31 March 2023 at 2.30pm

Spring holiday (Easter): Monday 3 April to Friday 14 April (inclusive)

- Good Friday: 7 April 2023
- Easter Monday: 10 April 2023
- Schools return: Monday 17 April 2023

May 2023

May holiday: Monday 1 May 2023

In-service day: Tuesday 2 May 2023

May weekend: Friday 26 May 2023 to Monday 29 May 2023 (inclusive)

June 2023

Schools close: Wednesday 28 June 2023 at 1pm

