



NEWSLETTER

Dear Parents /Carers and friends,

Staff and pupils were delighted to return back to school after the Spring break. We were particularly pleased at the changes in the weather with warmer temperatures and longer days of daylight. Pupils were keen to share details of their break and it was obvious that everyone had benefited from a well earned rest.

Changes in our COVID restrictions and regulations are being addressed currently to reflect Public Health regulations;

We continue to appeal for your support with;

- Parents and carers 'dropping off' and 'picking up' their children beyond the perimeter fence on Liberty Rd or the back gate
- Parents are asked NOT to visit the school unless they are invited to an appointment with the HT / DHT or to collect a sick child
- ALL authorised visitors to follow the guidance from staff
- Pupils are accessing their Zones via any of the open gates;
Early Years / Nurseries **RED ZONE**
P1-4 **YELLOW ZONE**
P5 - 7 **GREEN ZONE**
- Pupils arriving in their zones as near to the 9am start BELL as possible
- Pupils are supervised in all playgrounds by staff and SMT from 8.50am
- Breakfast Club children walk to the main entrance door of the school for 8.20 am on their own where Breakfast Club staff are waiting.

Our Establishments continues to reflect the health and safety awareness around school and nursery. Internally, classes have essential furniture and have regular access to cleaning resources throughout the day. Each class has sanitisation stations, cleaning cloths and toucan sprays (saline based and suitable for a school / nursery environment). Pupils are assigned a Zone for playtime and lunchtime play. Support staff and SLT are shared amongst the two playground Zones for supervision. Staff continue to be cautious and exercise personal responsibility, recognising that, where possible, it is safer to keep a distance from others. The wearing of face coverings should be encouraged on entering, exiting, moving around the establishment and in communal areas (excluding classrooms), in line with the face coverings at work guidance. Staff will remain cautious with the use of masks entering and leaving the building. Signage shows staff and pupils the direction of flow up and down the corridors and up and down stairwells ie 'Keep to the Left'. Signage also reminds us to wash our hands regularly, wipe down common touch point areas after use and sanitise at the many sanitisation stations. PPE is available for every room. Windows are open for good ventilation in every room and doors are ajar for more free-flow, reducing touch points. Outdoor activities are encouraged for health and fitness and to allow time out of the classroom for study. Classrooms can visit the hall for activity too. Pupils should have their PE change of clothing in their bag for the session. If your child wears a school polo shirt that can be worn to PE and then change into shorts. We encourage pupils not to bring in toys from home to school, but keep belongings to a minimum.

WE STILL ARE HEALTH CAUTIOUS

WE ARE ALL IN THIS TOGETHER!

PARENTS and CARERS, YOUR COOPERATION IS ESSENTIAL AND MATTERS TO US ALL

GRADUAL RETURN TO NORMALITY

FULL ASSEMBLIES are GO!

The Class Teachers are leading pupils through our final term 4. All classes are working their way towards the finish line in June where they will graduate into the next class and stage in the Primary school as our new P1 class or maybe onto Secondary school for our P7 classes. Each pupil will be encouraged to have excellent attendance to allow them to complete all tasks set for their age and stage which will then equip them to progress further and build skills for their future. Throughout the nursery and school, we are all appreciating each other and doing our best to complete the year with excellence and pride. As always our staff are planning a fantastic term of learning and teaching. Everyone in our building cares about each other and together we create a wonderful ethos. I continue to be proud of everyone's efforts. Our Summer reports will write themselves due to the talents and skills of our remarkable team.

BUILDING INCREDIBLE MEMORIES FOR LIFE



Medical Room / Isolation Room if someone has symptoms

Sanitisation station, 'Protect and Trace' records



SIGNAGE KEEPING US SAFE AROUND THE SCHOOL

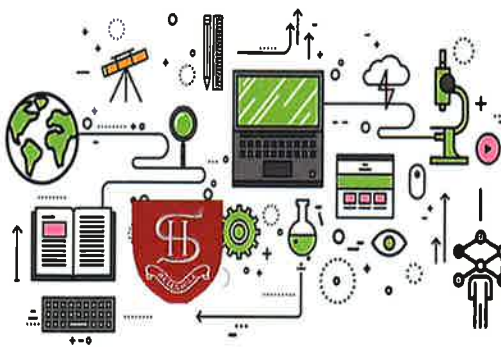


Reminding us to wipe down TOUCH POINTS after use.



WASH HANDS AND SANITISE REGULARLY THROUGHOUT THE DAY





WE ARE A RIGHTS RESPECTING SCHOOL and Nursery

We will be working towards our Silver award, led by Miss Rossetti and the staff and pupils of our establishments.

WE ARE A STEM SCHOOL and Nursery

We love STEM time with Mrs Sinclair and our Teachers.

We will be focused on STEM which looks at **Science, Technology, Engineering and Mathematics.**

We are delighted to visit Strathclyde University on Thursday 19th May '22 to collect an award for all our efforts. This topic will continue next year with Mrs Sinclair further developing her APT role at SHP.

Welcome to our new Primary 1 starts in August 2022



Our Transition programme will start on Monday 23rd May 2022 at 1.45pm in the school hall, inviting all our new P1 Parents and Carers to a presentation with Mrs Somerville HT and Mrs Harley DHT. We will share information about starting Primary and the things to expect in August. This presentation will also help you understand the important role Parents and Carers have in supporting a positive engagement for your child.

Guided Tours—All 'New Starts' will be invited to visit the school in small groups and see around the classes and building. An invitation has been sent to you for your child to visit on one of these dates at 3.15pm; Monday 13th June, Tuesday 14th June, Wednesday 15th June or Thursday 16th June.

Invitations are out for a 'New P1 first lunch taster' in the school and 1 adult supporting on Thursday 9th June at 11.45am for a 12 o'clock start until 12.30pm when the school lunches take over.

SUMMERLEE outings supporting STEM. We are all enjoying a school trip and learning about STEM, our Local history and the days gone by.

Rm 12 and 14 Wed 11/5/22 Rm 1 and 2 Fri 13/5/22

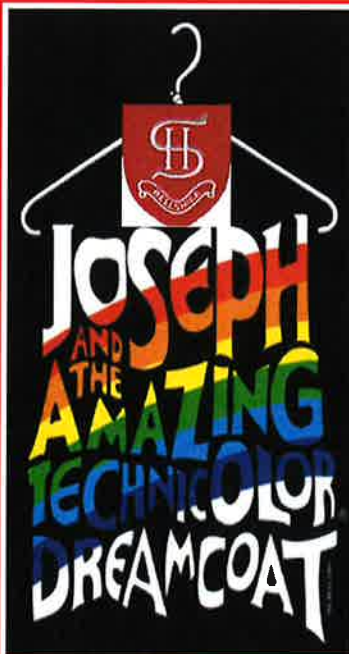
Rm 9 and 10 Wed 25/5/22 Rm 11 and Rm 13 Thurs 26/5/22

SUMMER DISCO

Friday 24th June 2022

Rm 6, 7, 9, 10, 11, 12 at 1.30—2.15pm

Rm 13, 14, 15, 16 at 2.15pm—3pm



Joseph and his Technicoloured Dreamcoat

We are looking forward to our Summer Show with P6 and 7 pupils taking the lead. Our choir will be P4-6 and lots of helpers back stage. Mrs Frew is taking the lead directing everyone and everything that moves to make this a memorable experience for all. The last time we aired this show it was 2013 and we loved all the songs. We are keeping our fingers crossed that no restrictions will be in place and we are all safe and fit to enjoy the show with a real live audience.

The show will run on Friday 17th June for a 'Dress rehearsal' for all our staff and pupils to enjoy.

Tickets will be on sale from Wed 1st June 2022 at £3 per seat.

Show dates

Wednesday 22nd June at 1.30 pm and 6pm

Thursday 23rd June at 6pm

Term 4

Staff and pupils are moving on with their learning to cover their pathways and build up their skills to complete their stage and Levels. **GREAT ATTENTANCE THROUGHOUT THE YEAR WILL SUPPORT SUCCESS.** As parents and carers, we know you will be focused on the skills to help your child learn through their Homework support from you, such as learning:

Reading, spelling, common words, mental agility in times tables and number bonds, preparing 'show and tell' topics, research with digital learning and accessing GLOW, NL Digital Learning etc

Dress Down Day—Sport wear on Friday 10th June 2022, supporting:

St Andrew's Hospice—Whole School £1 (no football colours)

Letters out for:

Transition dates for New Early Years children

Transition dates from Early Years to P1

Transition dates for P7 Leavers to Secondary school

P2—6 moving on to their next stage communication in June 2022

Garden Ground Force classes—bedding plants and soil and the great outdoors

Summer Report Cards due out Wk of 20th June 2022

FOLLOW US ON TWITTER @sch_sacredbells

E-Mail enquiries-at-sacredheart@northlan.org.uk

Telephone : SHP, SH and Orb Nursery class— office
01698 274903





Healthy Snacks for Kids



We are a health promoting school and Nursery Class. We have many **fresh chilled water fonts** and encourage staff and pupils to refresh themselves throughout the day. Please **encourage fruit and healthy snacks for breaks**. We are also a **NUT FREE Establishment**. Please check biscuits and spreads that they do **NOT contain NUTS**. THIS IS

BE SUN SMART

-  Put on a Shirt
-  Put on Sunscreen
-  Wear a Hat
-  Wear Sunglasses
-  Stay in the Shade



SHARE THE SUN SAFE STORY WITH YOUR CHILD

Sacred Heart Church

First Holy Communion

P4 pupils are making their First Holy Communion on Saturday 21st May 2022 at the 11am Mass with Fr Parkes. Thank you to all our P4 pupils, their families, Mr Carroll the organist and our staff for all their support and guidance to make this event the most memorable day.

All pupils to be at SHP Church House no later than 10.40am prompt.

God Bless you all.

Holy Days of Obligation;

26/5/22 Ascension Thursday 10am

24/6/22 P7 Graduation Mass 11am

29/6/22 Feast of Peter and Paul 10am



Lenten Charity Totals

Thank you to our P7 Staff and pupils for designing their Lunchtime Games and raising money.

Including our £1 Dress Down Days on Fridays we raised with your help £814.

We are still waiting for the SCIAF Boxes to be counted and for us to receive the final total raised there too which will also be added to the final total.

Thank you for your support.

THANK YOU
for supporting
the WEE BOX!

SCIAF



Packed lunch boxes, uniforms and bags

Please label all belongings to ensure that they will be matched back to their owners if left behind. So many pupils find it hard to look after their belongings. Without a label or name tag, it is very difficult and time consuming to reunite the owner with their property. With 240 pupils, all wearing the same uniform, they can misplace cardigans, jumpers and coats easily.

2 minutes to help. Thank you to everyone who has

Primary 7

Transition Days at CNHS

There are a few Secondary schools hosting transition for our P7 pupils and these are well underway.

Day 1 CNHS Tues 24th May '22

Day 2 CNHS Wed 25th May '22

A letter has informed families of the details.

Good luck to all our P7 pupils with their Transition meetings and I know their good behaviour and attitude will be appreciated by all receiving staff.

NLC School holidays and term dates 2022 / 2023

December 2021 - January 2022

Schools close: 2.30pm on Wednesday 22 December 2021

Christmas and New Year holidays: Thursday 23 December 2021 to Friday 7 January (inclusive)

February 2022

Mid-term break: Monday 14 February 2022 and Tuesday 15 February 2022

In-service day: Wednesday 16 February 2022

April 2022

Schools close: Friday 1 April 2022 at 2.30pm

Monday 4 April 2022 to Monday 18 April 2022 (inclusive)

- Good Friday 15 April 2022
- Easter Monday 18 April 2022

Schools return: Tuesday 19 April 2022

May 2022

May day holiday: Monday 2 May 2022

In-service day: Thursday 5 May 2022 (to coincide with Scottish local government elections)

May weekend holiday: Friday 27 May 2022 (One day has been moved due to Queens Jubilee celebrations)

June 2022

Queen's Platinum Jubilee celebrations: Thursday 2 June and Friday 3 June

Schools close: Wednesday 29 June 2022 at 1pm

August 2022

Teachers return and in-service day: Monday 15 August 2022

In-service day: Tuesday 16 August 2022

Pupils return: Wednesday 17 August 2022

September 2022

September weekend: Friday 23 September to Monday 26 September 2022 (inclusive)

October 2022

October week: Monday 17 to Friday 21 October 2022 (inclusive)

November 2022

School holidays and term dates

November 2022

In-service day: Monday 14 November 2022

December 2022 - January 2023

Schools close: Thursday 22 December 2022 at 2.30pm

Christmas and New Year holidays: Friday 23 December 2022 to Friday 6 January 2023 (inclusive)

Schools return: Monday 9 January 2023

February 2023

Mid-term break: Monday 13 February 2023 and Tuesday 14 February 2023

In-service day: Wednesday 15 February 2023

April 2023

Schools close: Friday 31 March 2023 at 2.30pm

Spring holiday (Easter): Monday 3 April to Friday 14 April (inclusive)

- Good Friday: 7 April 2023
- Easter Monday: 10 April 2023

Schools return: Monday 17 April 2023

May 2023

May holiday: Monday 1 May 2023

In-service day: Tuesday 2 May 2023

May weekend: Friday 26 May 2023 to Monday 29 May 2023 (inclusive)

June 2023

Schools close: Wednesday 28 June 2023 at 1pm