

**Primary School**



**Tackling Poverty**  
**Policy**

**February 2023**

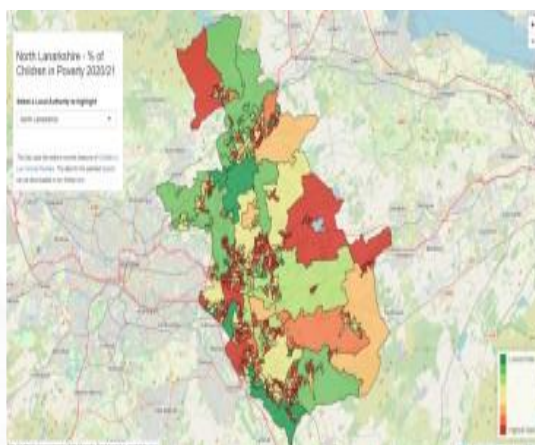
## Poverty Proofing Policy

Schools have a key role to play in tackling poverty and serving all learners equally is not enough – there needs to be a specific focus on those children and young people who are growing up in poverty – to ensure equity. Within New Stevenston Primary School we believe that tackling disadvantage ensures that all children have an equitable educational experience.

More than one in five (210,000) children across Scotland are officially recognised as living in poverty. In North Lanarkshire, it is estimated that 24.9% (17, 922) of children are in poverty. Insufficient household income can mean that some children and young people do not have the resources needed for school and cannot easily afford to take part in school activities which cost money. This can put them at risk of missing out on opportunities at school and feeling different, excluded and unhappy.

UNICEF estimates that 19% of British children live in food insecure households. This means that there are times when their household does not have enough money to buy enough food, or they cannot buy the full variety of foods needed for a healthy diet. It is estimated that people living in poverty in Scotland (2017-20) was 1.03 million, again, 19% of all people.

### Child Poverty in North Lanarkshire



- ❖ 61,606 children aged 15 and below in North Lanarkshire
- ❖ 11,556 of those children live in poverty
- ❖ 5455 children live in areas where the poverty figure is **over the national average of 24%**
- ❖ 3185 of those children live in areas where **poverty levels are over 30%**

## Child Poverty in North Lanarkshire



Locality	Children <15	No of Children in poverty	No over the national av 24%	No over 30% living in poverty	Highest Levels of poverty in the locality
Airdrie	10,216	2100	1144	869	42.3%
Bellshill	6896	1406	683	353	39%
Coatbridge	9074	1880	1081	620	42.9%
Cumbernauld	16,745	2565	800	462	46.3%
Motherwell	8752	1613	792	386	69.7%
Wishaw	7857	1630	820	457	49%
Shotts	2066	361	135	37	38.4%

LIVE HERE

Education structures, policies and practices affect children and young people from low income households and can present difficulties and financial barriers to participation throughout the school and nursery day. Understanding more about this from a child's perspective can support Education and Families, schools and nursery provision to poverty-proof their policies and practices so that conditions are right for all children and young people to learn, achieve and thrive.

At all times staff within New Stevenston Primary are mindful of the financial demands placed on families and are supportive towards the needs of all families within our community. We are also aware that families can find themselves coming in and out of poverty and that this can happen at any time of the year. The current situation of Covid-19 could result in further challenges for families experiencing poverty for the first time. No child will ever be excluded from any event due to their family's financial situation.

This policy details our plan to poverty proof our school and nursery.

New Stevenston Primary uses annual PEF money to enhance the literacy, numeracy and health & wellbeing of pupils within their learning environments of both school and home. Cluster priorities are agreed to take into consideration the needs of those with financial pressures across our whole community.

Our policy covers four over-arching themes:

- 1. School (and Nursery) Poverty:** this section of the policy focuses on tackling poverty via a review of the 'Cost of the School/Nursery Day' and the continued focus on tackling period poverty.
- 2. Food Poverty:** this section of the policy links to North Lanarkshire's 'Children's Right to Food Charter' and focuses on our role in the continued development of Club 365 and increasing the uptake of free school meal and breakfast club provision.
- 3. Maximising Income:** this section of our policy focuses on Financial Education for children and their families in partnership with North Lanarkshire's Tackling Poverty Team. It also provides details on how the cluster will work effectively on identifying those children living in poverty and supports which will be provided to their families.
- 4. Fuel and Material Poverty:** this section of our policy focuses on consideration of the impacts of these types of poverty and actions which must be taken.

At all times we use SIMD data to understand the social, economic and cultural context of the local and National community.

To make a referral to the Financial Inclusion Team we will follow this process:

Email: **TPTeam@northlan.gov.uk**

Alternatively, if a parent or carer wishes to self-refer, they can call:

**01698 332551.**

More information can be found at

<https://www.northlanarkshire.gov.uk/benefits-and-money/cost-living>.

## **Section 1**

### **School and Nursery Poverty**

#### **Theme 1- School/Nursery Uniform**

- Families who qualify are directed towards the clothing grant

- Families will be directed to local supermarkets as well as specialist uniform suppliers
- Unclaimed lost property that is in good condition is washed and either given or sold at a reduced price to families in need. This also helps fulfil the schools ecological responsibilities with a focus on reduce, reuse and recycle.
- Yellow polo shirts can be worn in place of the traditional school gold colour on PE days.
- Grants are sought to help support families further through supplying appropriate seasonal clothing

### **Theme 2- Equipment and Resources**

- All necessary stationery and school equipment is provided by the school
- Those pupils who require access to ICT materials for home use have these supplied by NLC where possible

### **Theme 3- School and Nursery Trips**

- Any families with more than 2 children have costs subsidised
- Maximum amounts asked for from parents for a single trip is £10. Any further cost is met by the school through fund raising.
- Any families who are particularly struggling have full costs paid at the discretion of the Head Teacher
- Parents are given plenty of time to be able to budget towards payments of trips
- Maximum limits are put on any spending money with trips to gift shops etc limited
- School staff are aware of any families who repeatedly avoid participation in trips to ensure that financial implications are not a factor
- Provision is made for packed lunches to be supplied for any children who are in receipt of a free school meal

### **Theme 4- Charity, Fundraising Activities, School Shows and Themed Days**

- Any charity or fundraising activities are at the discretion of parents – no money is asked for from children or parents and no child would ever be excluded on financial grounds
- Parents are given plenty of notice as to the frequency of planned events

- Any costumes for school shows are provided or sourced for children who need them
- Consideration is given to different ways children can celebrate themed days, e.g. we often don't ask the children to get dressed up on World Book Day, we look at books more in different ways instead

### **Theme 5- Homework and Out of School Hours Learning**

- Homework is provided by a variety of means, not purely digital
- After school clubs are offered without expectation of payment

### **Theme 6- Period Poverty**

- Free sanitary products are available for girls who require them
- Required sanitary products are provided in a sensitive and dignified way
- Girls can visit toilets other than their usual assigned toilet if necessary
- Girls can take sanitary products home for their use

## **Section 2**

### **Food Poverty**

- Any families who require support with school meals are directed towards the free meal allowance with NLC
- *Breakfast club – any families with more than 2 children have subsidised costs for breakfast.* This is free to pupils who are in Primary 1 to 4 and for pupils in Primary 5 to 7 who receive free school meals. For all other pupils the cost is £1 per day with a sliding scale for families of two at £1.50 per day and families of three at £1.80 per day.
- Breakfast and snacks are provided for any children who arrive at school hungry or don't have a snack
- Club 365 is advertised to the community on the school Twitter page
- Families are referred to the Tackling Poverty Team where necessary
- Packed lunches are provided to those in receipt of free school meals for any trips or excursions
- During particular times of hardship (e.g. National lockdown), families are supported with the donation of food parcels.

## Section 3

### Maximising Income

In New Stevenston Primary we offer Financial Education and advice for children, young people and their families in the following ways:

- Visiting specialists from banks etc. to provide advice
- Developing the Young Workforce guidance and lessons

For families living in poverty, we will offer support in partnership with the Tackling Poverty Team, Employability Resources, CLD and, where appropriate, Health and Social Work for advice and support.

New Stevenston Primary is committed to tackling and reducing poverty.

School leaders identify families who are living in poverty and refer them to the **Tackling Poverty Team** on the first instance, provided they have consented to share their information. The Tackling Poverty Team will advise families which options are available to them based on their personal circumstances. Any advice provided by the Tackling Poverty Team is confidential, free and impartial. The Tackling Poverty Team can offer advice, representation and advocacy in a number of fields including:

- adult disability payment
- child disability payment
- attendance allowance
- tax credits
- employment and support allowance
- income support
- jobseeker's allowance
- carer's allowance
- child benefit
- scottish child payment
- universal credit
- personal independence payment
- Rent/mortgage arrears
- Council tax arrears
- Pay day loans
- Personal loans
- Store/credit cards
- Gas/electricity arrear
- Budgeting guidance

## Section 4

### Fuel and Material Poverty

At Christmas time we supply a range of Christmas presents to vulnerable families in association with local charities.

Uniforms are donated or issued at reduced prices to families who need them. Any families who are living within fuel and material poverty can be referred to the Tackling Poverty Team by the school or by self-referral.

#### Useful Contacts/ Links-

Diamonds in the Community-Furniture and Baby [Bank-diamonds@hotmail.com](mailto:Bank-diamonds@hotmail.com) Facebook-

<https://www.facebook.com/ditcommunity1/>

Uniform Bank- Bellshill and Mossend YMCA- 01698747483 or

[contactus@communitiestogether.scot](mailto:contactus@communitiestogether.scot)

Clothing Grant-[northlanarkshire.gov.uk](http://northlanarkshire.gov.uk)

Free School Meals-[fsm@northlan.gov.uk](mailto:fsm@northlan.gov.uk)

Salvation Army- 01698239628 or [salvationarmy.org.uk](http://salvationarmy.org.uk)

Women's Aid- 01698321000

Saint Vincent De Paul- 01412268833 or [admin@ssvpscotland.com](mailto:admin@ssvpscotland.com)