

What's on at Lawmuir?

Week Beginning 18th May 2026

Lunch Menu
Week 2

Monday 18th

- Breakfast Club 8.15am
- **Babylon Rd Gate Closed for Demolition – more detail attached.**
- HT Meeting – All Day
- SCERTS Meeting

Tuesday 19th

- Breakfast Club 8.15am
- **P7 STEM in the Park event**
- Education & Families Manager Meeting – HT
- Orbiston Community Hub Meeting – HT
- Attendance Planning Meeting HT

Wednesday 20th

- Breakfast Club 8.15am
- **P7 Bellshill Academy Visit – All Day**
- HT Meeting Tannochside HMIE
- Exploring SDQs Meeting –
- Staff Meeting – Teaching Staff

Thursday 21st

- **P7 Bellshill Academy Visit – All Day**
- Interviews Thornlie PS – HT
- HT Meeting Civic Centre - pm

Friday 22nd

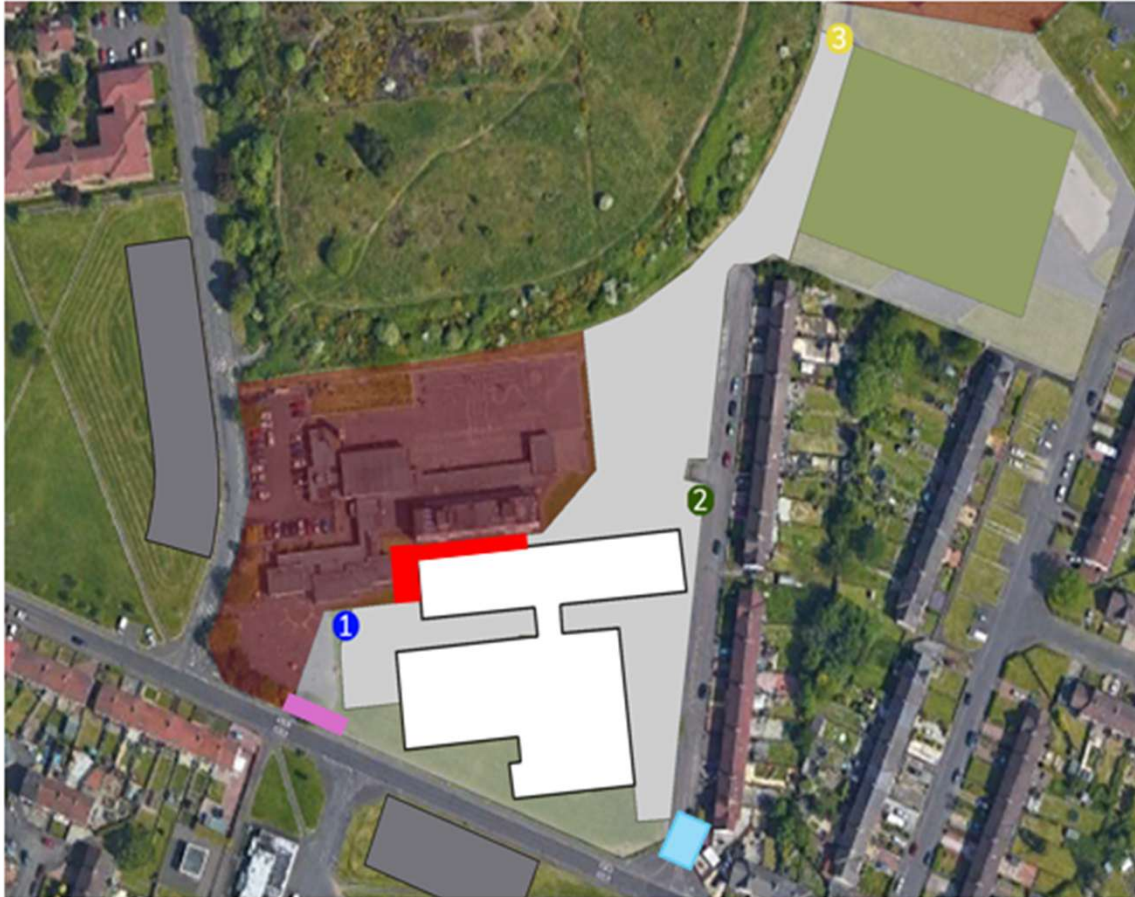
- **May Holiday - School Closed**
- School also closed **Monday 25th May.**

Be Safe - Be successful - Be Sensible - Be Smart



Orbiston Community Hub

Temporary Arrangements During Demo of old Lawmuir PS building



1 Gate 1 - Babylon Rd Entrance (Closed)

2 Gate 2 – Babylon Drive (Pedestrian Access only)

3 Gate 3 - Pathway to Liberty Rd (Play Park)

Orbiston Community Hub Building

Playground

Area closed during demolition

Closed entrance during demolition (No Access)

Morgan Sindall are now ready to start the demolition of the old Lawmuir PS building. This will have an impact on school operations for the period of the demolition as outlined below.

Change to Gates

During the demolition period it will not be possible to enter into the school, school grounds or playground via Gate 1 indicated on the map. This entrance will be cordoned off by Morgan Sindall (indicated in purple) for approximately 5 weeks. Pupils entering/leaving school can do so by using gate 3.

In addition to help ease possible congestion Gate 2 will be opened temporarily to allow pupils to enter and exit. Access to Babylon Drive will be pedestrian access only (other than for residents) both before school begins and again at 3pm. Temporary bollards will be in place to prevent vehicle access. We ask that everyone co-operates and parks well away from the school and walks the rest of the route. Park & Stride if you can!

Area Closed

To ensure safety for all pupils and staff during the demolition that is taking place, the area on the attached map indicated in red will not be accessible to pupils or staff for the duration of the demolition. There will be fixed barriers in place to prevent access to the area.

Appropriate risk assessments have been carried out by Morgan Sindall. Demolition will be in a phased and controlled manner which will allow the school to remain open during the demolition. Morgan Sindall have also liaised with NLC Health & Safety Team to ensure safety for all.

Breakfast Club

Children arriving for breakfast club should enter from 8.15am via the main entrance. Staff will be available to help them access breakfast club via the dinner hall. Breakfast club will then run as usual.

Dismissing Pupils

Pupils who are already dismissed from the hall will continue as normal. All other children will be dismissed via Gate 2 or Gate 3. Please discuss and arrange with your child which gate they should leave by or meet you at.

Lateness to school/ Collecting pupils early

Children who are late to school should enter via the main entrance as normal. We ask that parents try their best to get their children to school on time and enter through the gates available but understand sometimes this isn't possible. Should pupils arrive late they should report to the main office.

Pupils should not be routinely collected early from school. Should you have an emergency or planned appointment then please contact us (in advance if possible). The main entrance is located far from the school wing and getting children from class, with their jackets and bags can be a challenge during the busy home time period.

Dear Parents and Carers,

We are writing to inform you about upcoming demolition works of the former Lawmuir Primary School building.

Please be assured that careful planning is in place to ensure the safety and wellbeing of all pupils and staff throughout this period. The work will commence on Monday 18th May and take approximately six weeks.

The demolition will be carried out slowly and in carefully controlled stages by an experienced contractor. Noise levels will be monitored throughout the works, and equipment will be used to dampen down dust using water to minimise disruption. There are clear plans in place for when site deliveries can take place, ensuring these are managed safely.

The Babylon Road entrance to the school will not be in use during the demolition; however, a new temporary route will be made available via Babylon Dr.

To maintain safety at all times, the fire evacuation plan for the building will be adapted for the duration of the works, and lunchtime arrangements will be slightly staggered to help manage movement around the school.

All plans have been carefully considered, and appropriate safety measures and risk assessments are in place.

Once the demolition is completed it will make way for additional carparking and a new multi-use games area.

We appreciate your understanding and cooperation during this time. The schools have created a visual plan outlining the temporary entry and exit arrangements – this is available from your child's school. If you have any questions or concerns, please do not hesitate to contact the school.

Colin Forbes - Acting Education and Families Manager

P7 STEM in the PARK



DYW LANARKSHIRE & EAST DUNbartONSHIRE
Developing the Young Workforce

STEM IN THE PARK

**HAMILTON PALACE
SPORTS GROUND**
19th, 20th, 21st MAY
10:00am-2:00pm

STEM in the Park helps young people develop teamwork, creativity & problem-solving skills through fun, exciting employer-led activities!

ALL P7, & S1-S6 PUPILS WELCOME

P7 pupils should arrive at school as normal for this DYW event. Pupils should wear outdoor PE Kit, bring a packed lunch and water bottle.

Orbiston Community Hub

Newsletter

Progress Update

We are pleased to report that the asbestos removal works have progressed well on the project, and we have commenced the demolition works to the old Lawmuir Primary School.

We are planning to commence the old Lawmuir Primary School three storey demolition on Monday 18th May and plan to complete this by the end of June. During this time, access arrangements to the new school will change. The details will be communicated by North Lanarkshire Council to parents/carers of pupils who attend the school. We plan on commencing Sacred Heart demolition in the coming weeks.

A new Site Gateman, Chris Hunter, has been appointed by Morgan Sindall who is local to the area.

A specially trained Ecologist has been visiting both schools during the works to ensure we are not harming or disrupting any protected species during the demolition works.

CCTV cameras and security teams are ongoing with monitoring both facilities which are linked to Police Scotland.

Should you wish to discuss any aspects of the project, please feel free to visit us at our offices within the previous Lawmuir Primary School site.

Thank you as always for your continued support and we will continue to keep you up to date with regular newsletters.

**MORGAN
SINDALL**
CONSTRUCTION

May 2026



Contact us:

Should you have any questions or concerns, please do not hesitate to contact a member of our team:

Morgan Sindall
Ruairidh Clark, Senior Site Manager
Ruairidh.clark@morgansindall.com

Morgan Sindall
Ciaran Fallon, Trainee Site Manager
Ciaran.Fallan@morgansindall.com

Time for a Cuppa Coffee Morning In aid of Dementia UK

Lawmuir Primary School are holding a Coffee Morning
In aid of Dementia UK on Thursday 25th June.

This will take place from 10am – 11.30am in the Community Hall of
Orbiston Community Hub.

Everyone is welcome to attend this event which we hope will raise
money for a great charity.

Non-Uniform Day - Crazy Hair Day - Friday 29th May

Take part in our Crazy Hair Day.

Instead of paying £1 we would love you to hand in an unopened
packet of biscuits, cakes or chocolate sweets to help us run our
Coffee Morning. Donations will be used at our Coffee Morning or as
part of our Chocolate/Sweet Tombola coming soon!



Lawmuir Primary School

Time for a cuppa

Coffee Morning

Lawmuir Primary School are holding a
'Time for a Cuppa' Coffee Morning
in aid of Dementia UK on Thursday 25th June.

This will take place from 10am - 11.30am
in the Community Hall of Orbiston Community Hub.

All local community members welcome for a cake, a blether and
some fun to raise money for this great charity.
No ticket required Donation on door.

DementiaUK
Helping families face dementia