



Promoting Partnership

School vision: Together we will shine

Follow us on Twitter - @EastfieldPS

enquiries@eastfield.n-lanark.sch.uk

January 2021

Dear Parents / Carers,

Firstly, we would like to wish everyone a Happy New Year and hope that you all had a lovely time over the Christmas break.



As a staff we are aware that you will have lots of questions about what learning is going to look like as we move forward. Therefore, we have put together this information sheet to hopefully support and answer some questions that we are aware of.

Eastfield Online Learning

As you are aware our online learning will take place using Glow - Teams. All children have their user name and password to access this already.



Class teachers are in the process of putting together a Learning Journey, to detail the learning that will take place over this term, whether in school or learning online. This will be posted on each individual class Teams page for you to see the overall learning that will take place this Term.

This time there is a slight change to the way online learning will be delivered. From Monday 18th January, to further enhance progression in learning, each week the class teacher will post an overview of a weekly timetable which will include curricular areas being taught on which days. As previously each class will have folders in the 'Files' section in their Team page with relevant work for that day/activity. However, in addition to this some work will be posted in Teams using the '**Assignments**' section. (help sheet will follow with instructions how to use this). By using Assignments work will be suitable for all learners and work can be completed and handed back to the teacher discretely, therefore it will not be seen to all children on the Teams page. Teachers will have the opportunity to mark work and provide feedback the same way they would if the children were writing in jotters in the class.



Each teacher will decide if they would like to allocate points for work handed in and use a points system similar the classroom to celebrate great work and effort during the week. The first week (11.1.21) will be a week of revision, which would happen in the school and provide the opportunity for everyone to become familiar using Assignments.

When class teachers post Assignments (which will be signposted in red in the weekly overview) they must be completed and returned as this will provide an evidence bank of learning for your child. This will be closely monitored by the Management Team. The Management Team have taken a stage to monitor pupil engagement and may from time to time give you a call if you are not engaging to see if we can support you in anyway.

Again, this is to ensure progression in children's learning as we want to ensure every child can reach their full potential during these unprecedented times. If any parents / carers have questions about online learning could you please direct your question through the enquiries email address enquiries@eastfield.n-lanark.sch.uk and in the subject matter mark it for the attention of the relevant member of management where we will get back to you as soon as we can.

It is important to highlight that teachers will not be on call after working hours and any questions that you have, will be answered the following day.

SMT Member	CfE Level	Primary
Mrs Bradshaw	Early Level	Nursery and P1a, P1b, P1/2
Miss Duddy	First Level	P2, P2/3, P3/4, P4, P4/5
Mr Rutherford	Second Level	P5, P5/6, P6, P7a, P7b



Further to this children have their Sumdog user name and password to access maths / numeracy and spelling activities which will be set by the teacher or if children would like to do additional learning they can access Sumdog at any point.



We as a school have access to Epic books which are banded to match reading levels. As before children can use these for fiction and non-fiction texts, some will be set by class teachers. In addition to this, children can read any book, comic, magazine at home to support their reading development.

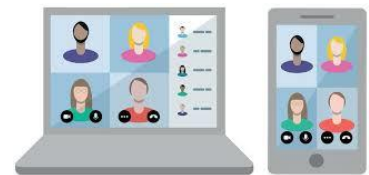


Recorded Lessons

As a Greenfaulds Cluster we have agreed that we will provide recorded literacy and numeracy lessons per week, where the children can hear a class teacher or a suitable video explanation from another source providing an explanation for the work they have to complete. This is still in the early stages and will develop over the coming weeks.

Live Catch-Ups

As a school we have decided that at least at one point during each week, the class teachers will schedule a 'live chat' with the children in their class. You will see the day and time on the weekly timetable overview on a Monday. Class Teachers will set this up for children and the children click the 'join now' button. This is just a 10-minute check in to catch up with children so that the teachers can have more communication and dialogue with their class. Please do not worry if your child cannot make the check-in time for a particular week due to other parental work commitments, it is a digital offering for the children to talk with their teacher and the others in the class.



Please can you ensure that all children turn their camera off during these Live catch ups! This is for security purposes.



North Lanarkshire Virtual Classroom

North Lanarkshire Council have produced a Virtual Classroom. Please be aware that this is an additional resource to compliment the teaching and learning provided by class teacher. Teachers may choose to utilise this resource on their Teams page and children can also access this for further learning activities if required.

These activities on this site will be updated on a monthly basis by North Lanarkshire Council and provides two weeks' worth of additional work if required.

To join the team please use the code: **rOf8wg2**.

Once you join the Team you will see the following:



The colours are related to each stage in the school. Please see the table below for colour that would be suitable for your child. Please be aware the CfE levels are only indications of where children should be in their learning journey and that each child is an individual.

Channel Colour	Primary/Stage	CfE
Red	Primary 1	Early***
Orange	Primary 2	First*
Yellow	Primary 3	First**
Green	Primary 4	First***
Blue	Primary 5	Second*
Indigo	Primary 6	Second**
Violet	Primary 7	Second***



Stationary to Support Online Learning

On Monday 11th January 2021 we are inviting parents / carers to the main entrance to collect jotters if you require them to support learning from home. We have split this into initials using surnames and allocating times to avoid mass gatherings and ensuring safety of everyone at all times. If you would like jotters please come along at the time specified in the table below and staff will be at the main entrance to hand them to you.



Surname Initials	Time Allocation
A-D	09:30 - 10:00
E-G	10:30 - 11:00
H-K	11:30 - 12:00
L-O	12:30 - 13:00
P-S	13:30 - 14:00
T-Z	14:20 - 14:50



School Start Times

School Start and Finish Times

As of Monday 11th January 2021, the school will reverse to the normal start time of 09:00 and finish at 15:00. This is due to the decrease in numbers within the school. Breakfast club is still open from 08:15 for children who will be attending school.

Keyworker Letters

While we are aware you will have received a text from North Lanarkshire Council about keywork allocations in the school, we as a school are required to ask for both parent's keyworker letters from your employers. This is to ensure that the school is only used for children where no alternative childcare can be provided. If your child is attending school, they will enter and exit via their normal zones and not the main entrance.





School Uniform

If we have children of keyworkers in the school building during these times, we have been advised by North Lanarkshire Council, that they should wear their school uniform.



The children can wear their uniform on top, but comfy trousers on the bottom, such as leggings or tracksuit bottoms. I would also advise children to come with warm jumpers and jackets as the school may get cold due to the windows being open to ensure ventilation.

Primary 1 and Nursery Enrolment

A reminder that if you know of any child starting Primary 1 in August 2021 that all infant beginner forms should be submitted online through the school enquiries account by 22nd January 2021.

For a nursery placement, all forms should be submitted online through enquiries email also by 12th February 2021.

Please if you have not already done so, follow the school and the Parent Council on Twitter as we regularly share information through these communication channels along with Groupcall.

As always, we would like to thank you for your continued support throughout this challenging time and when we receive information from North Lanarkshire Council we inform our parents / carers as soon as we can.

Yours sincerely,

Mrs Bradshaw

DHT

 @eastfieldschool

@EastfieldPC