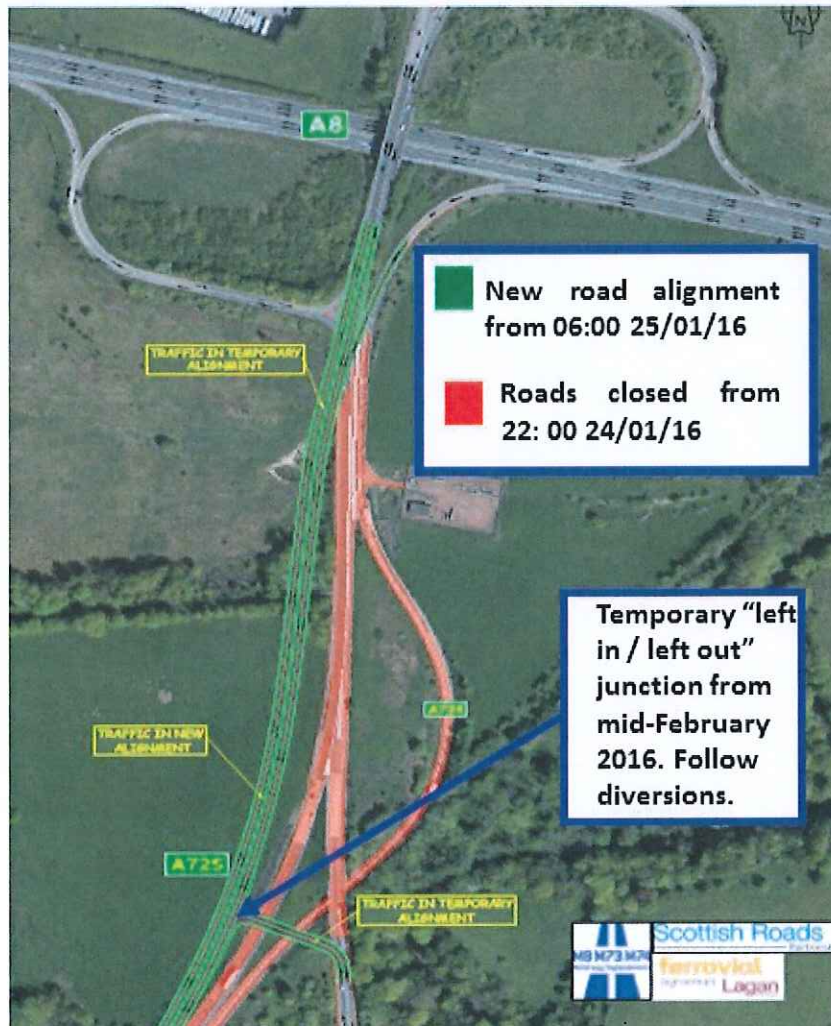


NEW LAYOUT FOR JUNCTION AT NORTH ROAD, BELLSHILL/A725

North Road will be closed for 3 weeks from 22:00hrs on 24th January at its junction with A725 south of Shawhead, to allow construction of a temporary junction to maintain access during the next phase of works. A signed diversion will be in place.

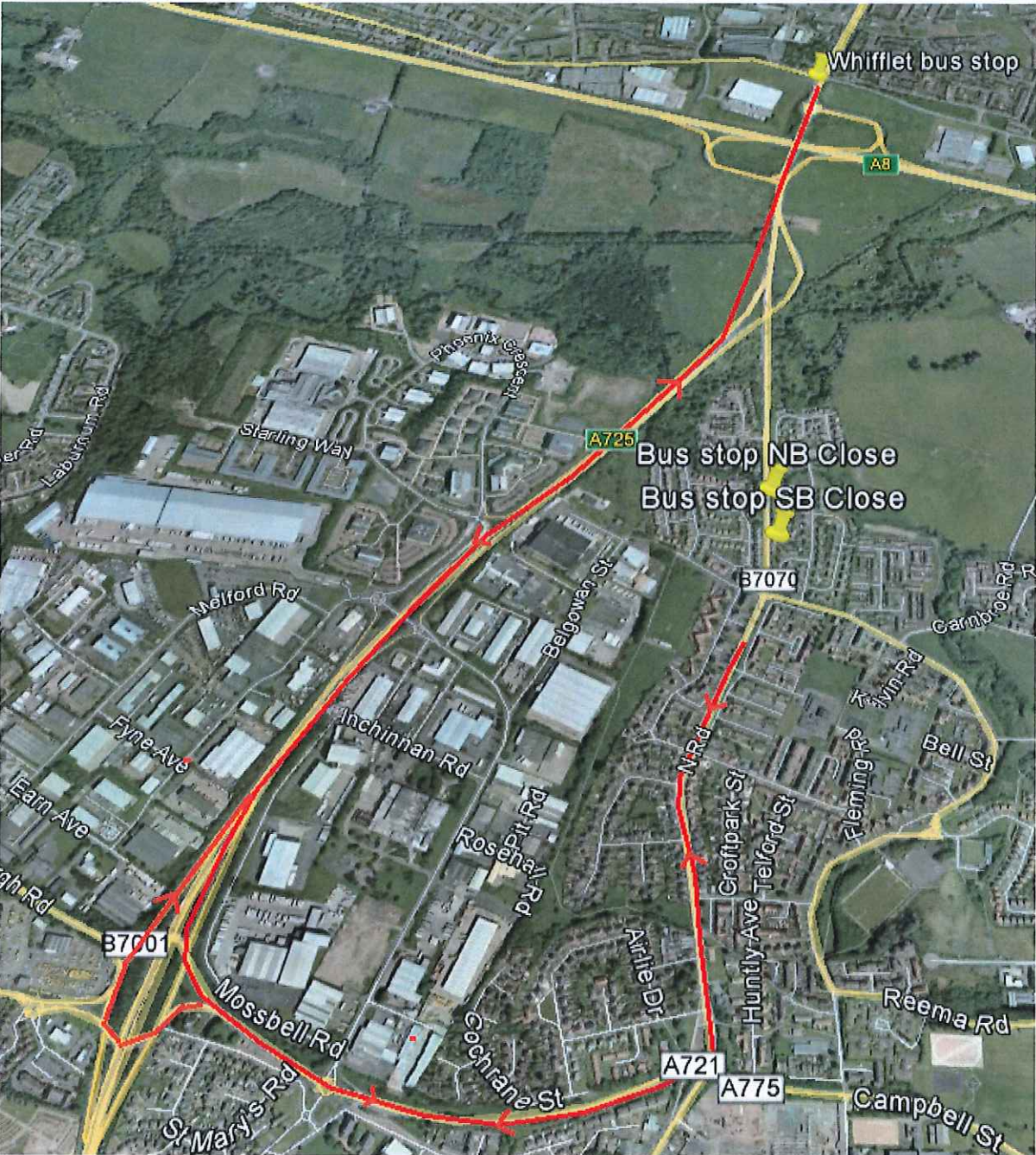
The temporary junction will operate as a “left turn in / left turn out” onto the new A725 for approximately 8 months as indicated below. There will be no access for HGVs during this period.

The footpath linking North Road and Coatbridge will be closed and a free shuttle bus service will provide transportation for pedestrians as well as bus users providing a link with First Glasgow’s amended 201 route.



APPENDIX 2

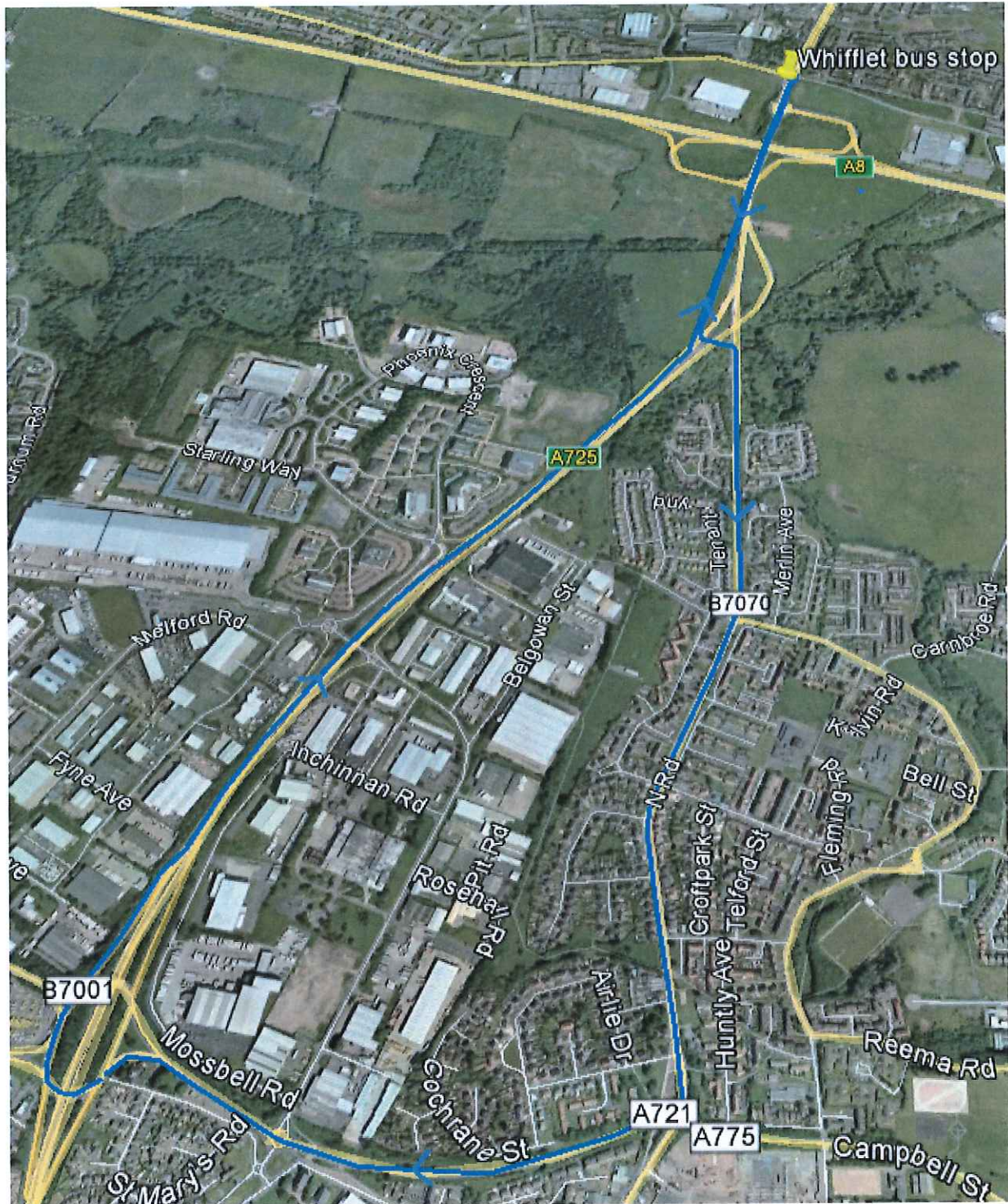
Shuttle Bus Route – North Road Closure



Shuttle Bus Route from 22:00 on Sunday 24 January 2016 for approximately 3 weeks. Bus pick-up/drop off available on both sides of North Road, Bellshill.

APPENDIX 3

Shuttle Bus Route – North Road Restricted Access



Shuttle Bus Route from mid-February 2016 for approximately 8 months.
Bus running in a clockwise direction only. Bus pick-up/drop off available on southbound side of North Road only

