



# COVID-19 mitigations put in place at Coltness High School



## Wear a mask



- Coming into the building
- In corridors
- Social areas when not eating
- At the toilet
- In local shops
- On transport, including the Cleland bus
- S4 to S6 in classes

## Hand sanitise



as much as possible

## More toilets



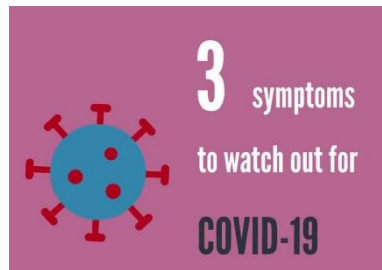
opened up

Follow the



at all times

## Isolate, test, track & protect



## Enhanced cleaning



## Do NOT



make physical contact with others

## Get fresh air



At break & lunchtime

## Double Periods

	8:45-9:30	9:30-10:00	10:00-10:45	10:45-11:00	11:00-11:30	11:30-11:45	11:45-12:00	12:00-12:15	12:15-12:30	12:30-12:45	12:45-1:00	1:00-1:15	1:15-1:30	1:30-1:45	1:45-2:00	2:00-2:15	2:15-2:30	2:30-2:45	
Monday	20th	English/Computer	English/Computer	English/Computer	English/Computer	English/Computer	English/Computer	English/Computer	English/Computer	English/Computer	English/Computer	English/Computer	English/Computer	English/Computer	English/Computer	English/Computer	English/Computer	English/Computer	English/Computer
Tuesday	21st	English/Computer	English/Computer	English/Computer	English/Computer	English/Computer	English/Computer	English/Computer	English/Computer	English/Computer	English/Computer	English/Computer	English/Computer	English/Computer	English/Computer	English/Computer	English/Computer	English/Computer	English/Computer
Wednesday	22nd	English/Computer	English/Computer	English/Computer	English/Computer	English/Computer	English/Computer	English/Computer	English/Computer	English/Computer	English/Computer	English/Computer	English/Computer	English/Computer	English/Computer	English/Computer	English/Computer	English/Computer	English/Computer
Thursday	23rd	English/Computer	English/Computer	English/Computer	English/Computer	English/Computer	English/Computer	English/Computer	English/Computer	English/Computer	English/Computer	English/Computer	English/Computer	English/Computer	English/Computer	English/Computer	English/Computer	English/Computer	English/Computer
Friday	24th	English/Computer	English/Computer	English/Computer	English/Computer	English/Computer	English/Computer	English/Computer	English/Computer	English/Computer	English/Computer	English/Computer	English/Computer	English/Computer	English/Computer	English/Computer	English/Computer	English/Computer	English/Computer

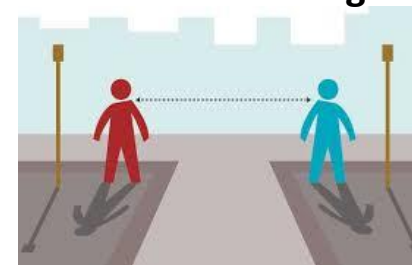
introduced

## Windows open



in classes

## Social Distancing



where possible

## Multiple entrances



introduced

**We are putting these mitigations in place**  
to protect OUR Coltness community  
& crucially to save lives!

So PLEASE support us by reinforcing these at home  
AND

Also support us when we are implementing them in school

**You can help by**

supporting your young person to make appropriate, well  
thought out choices in their current social interactions  
both in and outwith the school day.