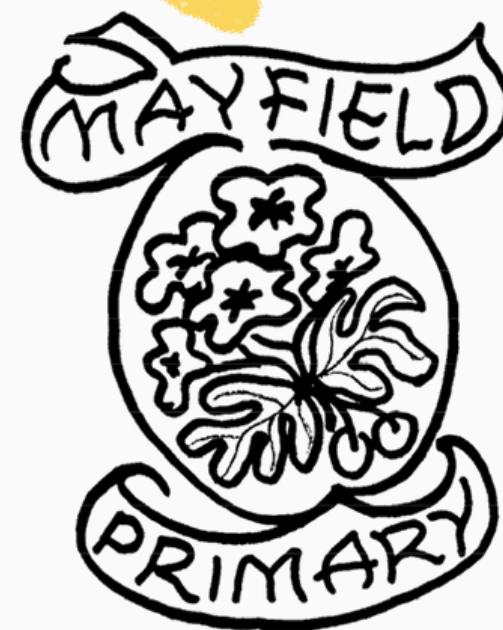


WELCOME TO MAYFIELD PRIMARY SCHOOL

**Primary 1 Induction
Friday 6th June 2025**



**Our projected roll
next session will be
198 pupils
+ 24 children
in the Early Years
Class**



Staffing

- Head Teacher – Mr Faulds
- Depute Head Teacher – Mrs Hall
- Class teachers – 8 classes
- Additional teacher to support P1 cohort
- Targeted support teachers
- School counsellor – Julie Cassidy
- Early Years Practitioners
- Pupil Support Assistants
- Clerical Staff – Mrs Hyslop and *vacancy
- Janitor – Mr McMillan
- Kitchen staff
- Cleaning staff



Mrs Muir



Primary 1 Teachers

Mrs Muir works...
Monday – Wednesday

Mrs Anderson



Mrs Anderson works...
Wednesday – Friday

The School Day...

Full time from Day 1



- Wednesday 20th August
- 9:05am on first day ONLY
- 2:45pm pick up for 20th, 21st and 22nd August.

Normal school times 9.00am – 3pm

- Informal entry from 8:50am
- Break 10.45am – 11am
- Lunch 12.30pm – 1.15pm
- Finish 3pm

Bringing / Collecting your child

Children can be escorted into the playground through the gates from 8:50am and will enter the school through the cloakroom.

Pupil Support Assistants will be in the playground, cloakroom and class areas to supervise from 8:50am.

At the end of the day, your child's teacher will bring them into the playground and wait with them until they see the adult who is there to collect them.



9-3PM (8:50AM SOFT START)

Playground

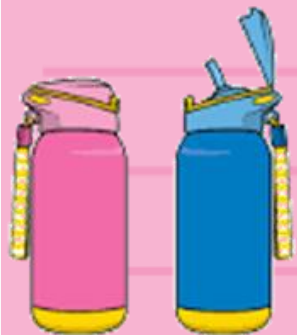


Your child will eat their snack at
Playtime and play in the playground

What your child will need...

From Day 1...

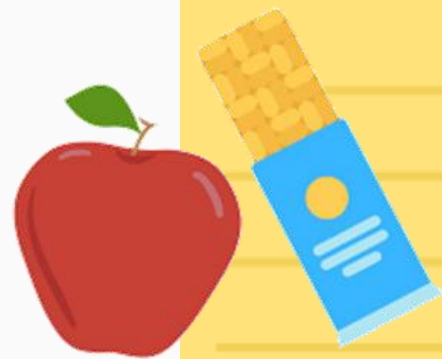
Water bottle
filled with
water



Packed lunch,
if not having
school lunch



Snack for
playtime –
separate from
packed lunch



FYI:

ALL children will be
gifted a Mayfield
PS bookbag!

Eventually...



Gym shoes and
shorts (to be
kept in school)

Uniform

- Green sweatshirt or cardigan with school badge
- White/yellow polo shirt or shirt with school tie
- Grey/black skirt or trousers
- Black shoes
- Shorts and gym shoes (to stay at school)
- Discourage jewellery – not allowed at PE
- No football tops or colours



LABEL EVERYTHING!!!

School Lunches...

- Hot or Sandwich options – free for all pupils P1 – P5
- Menus available online to help with lunch ordering system
- SLT and Pupil Support Assistants on hand to help
- All Primary 1 pupils will go into hall 5 minutes earlier than the other children with their buddies
- Packed lunches eat in the same hall and at the same time as school lunches



First Day Survival!



Children and Parents
should enter the
playground between
8:55am and 9:05am

“Welcome New P 1” board will
be in playground for parents
/ Carers to take
photographs.

Primary 1 teachers and
buddies will collect children
from playground at 9:05am
and escort them into class.

End of the school day...



WEEK 1 ONLY = 2:45PM

At 2:45pm, the P1 teacher will bring your child into the playground and wait with them until they see the adult who is there to collect them.

Please stand in a space to allow your child to spot you waving.

Dates for your diary...

Children return...
Wednesday 20th
August

Meet The Teacher
Event...
Friday 22nd August



Mayfield Breakfast Club

Available Monday – Friday
8–8:30am
School Dining Hall



Parents / Carers are required to complete a registration / allergies form on first visit.

No need to book in, just turn up!

Grab 'n' Go Bagels from 8:45am at school gate.

Mayfield Out of School Club

Hosted in Mayfield PS but privately owned
-cost involved!

Accommodated in dining hall run by
Margaret and Nicole.

Children walk from their class, through
school to access at the end of the school
day.

For more information, call:-
07766 133 816



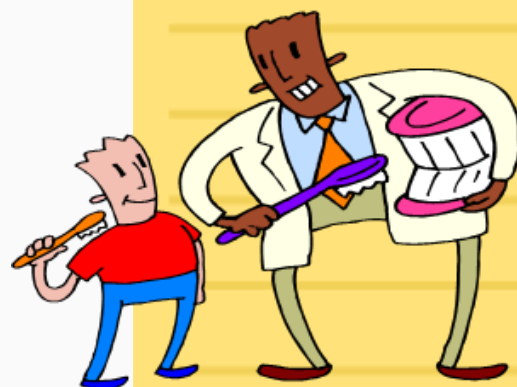
Absence



Inform school before
9.15am on the first day
of absence

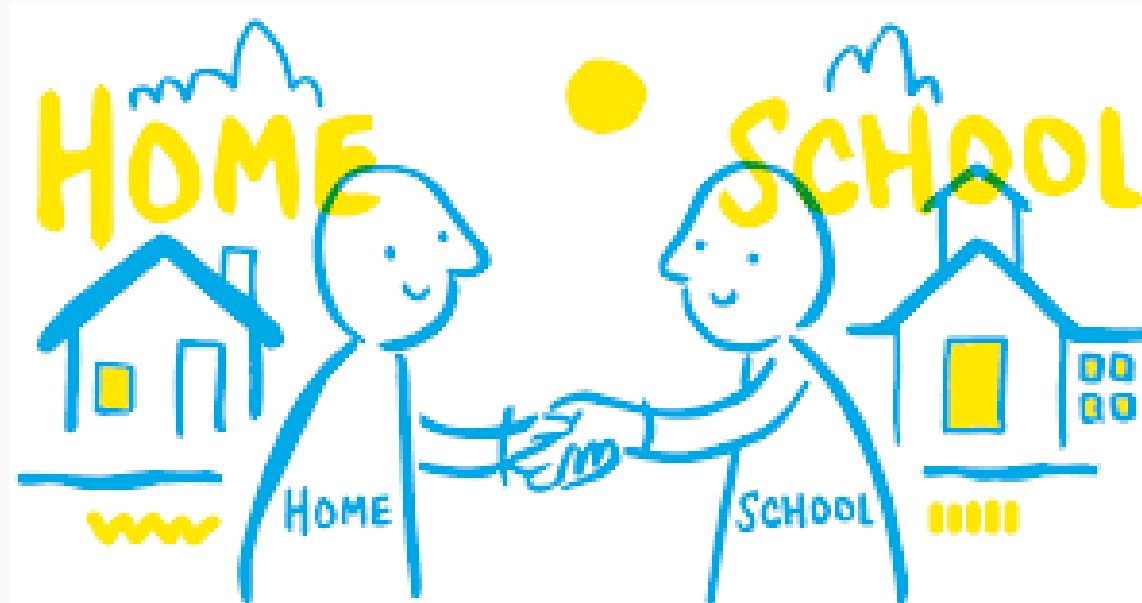


Inform school by
letter/email. This will
be unauthorised.



- * Inform school
- * Collect child
- * Sign child out

Communication



Lateness

Pupils should enter by
the main office door if
running late to allow
staff to sign them in.

Being on time is
important!



Communication

Health & Safety



Illness



Accident



Medication



Communication

Seesaw



CW Cooper W > All Folders Print PDF × ☰ 📅 Add

Cooper W

Primary 1 (22/23)
Teacher

Journal Activities Notifications Progress

Caleb McC
209 posts | 17 May 2023

Catherine H
207 posts | 7 Jun 2023

Christopher K
178 posts | 13 Jun 2023

Cooper W
233 posts | 12 Jun 2023

A young boy in a school uniform stands in front of a large yellow banner that reads "First Day of School 2022" with rainbow graphics. The banner is decorated with school crests.

Communication


Seesaw



Teacher - 12 Classes Messages Library

CW Cooper W All Folders Print PDF x

CW Cooper W



Seen by: Naomi Bowie

5 September 2022 20:11

Mrs Muir Everyday we practise writing our names on our name cards. Look at how well we are doing! ✍️

Naomi Bowie Super writing Cooper 🌟

Like Comment

Primary 1 (22/23) Teacher

Journal Activities Notifications Progress

- CM Caleb McC 209 posts | 17 May 2023
- CH Catherine H 207 posts | 7 Jun 2023
- CK Christopher K 178 posts | 13 Jun 2023
- CW Cooper W 233 posts | 12 Jun 2023**
- ED Ellie D 175 posts
- EQ Emma Q 200 posts | 24 May 2023

+ Students + Families

Invite will be sent home in August to let you sign up.

Working Together

It's good to talk!! We are available to chat informally and answer any questions at the beginning and end of the day.

If you have a concern about your child or their education, please make an appointment at the school office to speak to the class teacher or a member of the leadership team.

IMPORTANT

For Health and Safety reasons, you must enter through the main door at the front of the school.

Parents should not enter the school building by the playground doors.



**Thank you for
attending today
and for choosing
to send your
child to Mayfield
Primary School**