

COMMUNITIES & EDUCATION DIRECTORATE  
Head of Service (Education): Andrew McClelland  
Cunninghame House, Irvine KA12 8EE  
Tel: 01294 310000  
[www.north-ayrshire.gov.uk](http://www.north-ayrshire.gov.uk)



Kirk Vennel, Irvine KA12 0DQ  
Tel: 01294 271587  
E-Mail: [glebe@ea.n-ayrshire.sch.uk](mailto:glebe@ea.n-ayrshire.sch.uk)  
Website: <https://blogs.glowscotland.org.uk/na/glebeprimaryschool>

# GLEBE PRIMARY

## October 2023

## Newsletter



*Dear Parent/Carer,*

*I hope you have had a lovely October break. It's Term 2 already and this term is always a busy one in the lead up to Christmas.*

*We are lucky to be able to offer a variety of afterschool clubs this term thanks to Ms. Nisbet and our Active School Coordinator Miss. Goldie. However, please remember as the clubs are extra-curricular and it is dark early, children should be collected from school clubs by an adult.*

*Our children are looking forward to starting their class enterprise topics; learning about the world of business and making money! We are also hoping to invite parents/carers in again this year to talk to us about the world of work.*

*We have some great news to share. Our DHT Mr Wilson and his wife welcomed baby Felicity into the world at 11.24am on Wednesday 25<sup>th</sup> October. Mum and baby are well and little Freya is super excited to be a big sister!*

*Please take note of some important information and dates for this term and we will be in touch with further dates/information when items are confirmed.*

Best wishes

Mrs Sanderson  
Head Teacher







# HALLOWEEN 2023.



Thank you to our families and to our staff for making this year's Halloween another successful year at Glebe!

Well done to Primary 7 who did a great job organising Halloween activities including; glitter tattoos, indoor and outdoor Halloween games, a Halloween hamper bonus ball, tuck shop and guess the squish mallow's birthday. Thank you for supporting their Arran residential fundraising. We will let you know how much was raised once all the pennies have been counted!

Lastly, thank you to our super PTA/PC for providing snacks and treats for all children again this year. Our little monsters certainly enjoyed this bit of the day!



CREATIVITY

KINDNESS

RESPONSIBILITY

RESPECT

# Learning Café 3



Our 3<sup>rd</sup> Learning Café is on Friday 3<sup>rd</sup> November. The theme is Reading.

Thank you to everyone who managed along to our 1<sup>st</sup> and/or our 2<sup>nd</sup> Learning Café and who completed the parent/carer survey, again the feedback was overwhelmingly positive. We have included a selection of our positive comments and our 1 comment requiring action. We appreciate ALL comments and can assure you we act on ALL comments.

## POSITIVE COMMENTS

- Great to participate in the numeracy activities with my child which allowed her to demonstrate her learning.
- Great idea. Positive experience involved in our child's learning in the classroom.
- I love the learning cafe, it's a great way to connect further with XXXXX and see him thrive in a different environment. It makes us so happy to see how nurtured he is in XXXXXXXXXX class and for XXXXXX to see his parents and teacher working in partnership. Thank you for the opportunity to experience this, I look forward to the next session. I agree the time was suitable but I would enjoy longer if possible.
- Enjoyed seeing what XXXXX gets up to on a daily basis in the same classroom I was in 29 years ago.
- Everyone at Glebe is always so lovely. It's great to see what the children are learning. Thank you

## COMMENTS REQUIRING ACTION

- Didn't feel like there was enough seating or space to complete tasks fully  
\* This has been fed back to staff to ensure it is addressed – thank you for your comment.

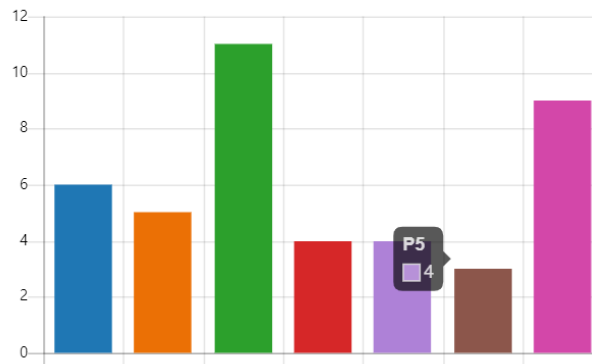




Please see the data in relation to the questions we asked.

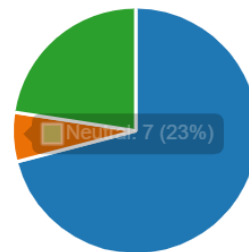
1. Please select what class your child is in. Multiple answers for more than one child is acceptable.

● P1	6
● P2	5
● P3	11
● P4	4
● P5	4
● P6	3
● P7	9



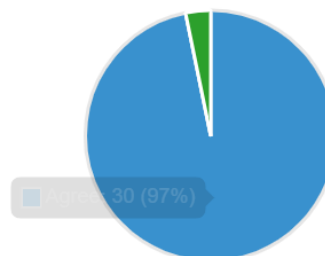
2. This was a good opportunity to talk to my child's class teacher, other school staff and or other families.

● Agree	22
● Disagree	2
● Neutral	7



3. This was a good opportunity to see inside my child's class and look at my child's work.

● Agree	30
● Disagree	0
● Neutral	1



**CREATIVITY**

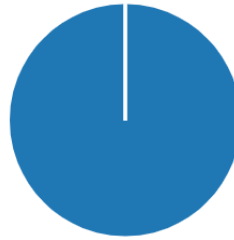
**KINDNESS**

**RESPONSIBILITY**

**RESPECT**

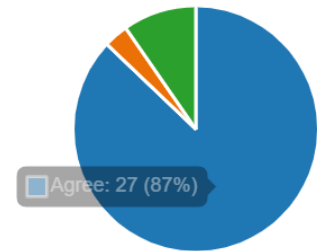
4. I enjoyed participating in an activity with my child.

● Agree	31
● Disagree	0
● Neutral	0



5. The 30 minute timeslot was suitable.

● Agree	27
● Disagree	1
● Neutral	3



### What is a Learning Café?

This is an opportunity for families to visit their child's class, look at their child's work in their jotters or on the walls, participate in a child led activity, and have an informal chat with the teacher and other parents/carers. Each café has a different theme. E.g. this next one is around reading and reading activities.

### Who is invited?

Your child's family; parents, carers, grandparents, aunts, big cousins ...it's up to you. However, due to capacity and classroom space we would ask that only one person attends each session. For Health and Safety reasons prams/buggies are not permitted in classrooms. These can be left in the gym hall.

### Time?

We have split the afternoon into 3 sessions in order to reduce the number of people in each class at any one time. This has helped the sessions run smoothly. Sessions are organised alphabetically by surname however we are happy to accommodate families who need to alter the time for different reasons. Furthermore families with more than one child at Glebe can choose different sessions for their children to ensure they get quality time with each child.

- 1<sup>st</sup> session 1.15-1.45pm - families with surnames starting with A through to H
- 2<sup>nd</sup> session 1.45-2.15pm- families with surnames starting with I through to M
- 3<sup>rd</sup> session 2.15-2.45pm- families with surnames starting with N through to Z

# P7 Residential 2024

## REMINDER FOR P7 FAMILIES

This year's P7s, are attending a 4 day, 3 night residential at the Arran Outdoor Centre. The payment account has been set up on ipayimpact. Fundraising for transport costs are well underway by our super sevens!! The final balance for the accommodation and activities is due November 30<sup>th</sup>. Please check your individual ipayimpact account and arrange payment on or before the closing date. Please contact us if there are any financial difficulties or technical issues.



## BRING A BOTTLE/CHOCOLATE DRESS DOWN DAY THURSDAY 16<sup>TH</sup> NOVEMBER 2023

The children are invited to dress down and wear their own clothes for school on **Thursday 16<sup>th</sup> November 2023**.



If you would like to donate a **bottle** for the bottle stall and/or any **chocolate** for the chocolate tombola stall (for the upcoming Christmas Fayre - **FRIDAY 15<sup>TH</sup> DECEMBER 1.30-4PM**) then please bring these in on Thursday 16<sup>th</sup> November. Take chocolate and non-alcoholic bottles to classes and hand all alcohol into the office.



**Huge thanks for your support!**

**Glebe PTA/Parent Council**



# Reporting to Parents/Carers Learning Conversations 23/24

All families should have received an interim report giving you an indication of how your child has settled in their new class, how they are learning and their effort in class. **Please contact the school office if you haven't received the report.**

**Our first Learning Conversation is on Wednesday 15th November, 3.30-6.00pm and 6.30-9.00pm.** If you haven't already, please complete the appointment slip allocated in the report envelope and return it to school ASAP in order for the office staff to allocate appointments.

We sincerely hope you are able to manage on the evening, and ask where possible, **that your child attends with you.** It's really important that they participate in the conversation about their learning.

If you wish to speak to the teacher without your child present then they can pop down to the hall under the supervision of school staff whilst you have a moment alone with the teacher.

P7s will be keeping us all to time this year! Letters will be issued asking for consent for P7s to help at the Learning Conversations (something every p7 year group loves!). P7s can only help if they are collected by a grown-up afterwards. Unfortunately children will not be permitted to walk home alone after dark- apologies if this causes inconvenience.

Remember, if you are worried about your child's wellbeing or learning at any time please make an appointment to talk to their Class Teacher, the DHT Mr Wilson or myself.





# Table Tennis Exhibition



All our pupils had a fab time at our recent Table Tennis exhibition.

Mr Main and his brother- the other Mr Main, worked with Active Schools to promote the sport and increase participation within the Irvine area.

There was great excitement and cheering for our Mr Main and lots of pupils interested in the sport!

We issued flyers for interested pupils. Contact us if you require further information.



CREATIVITY

KINDNESS

RESPONSIBILITY

RESPECT

## Remembrance Sunday



Remembrance Sunday is on Sunday 12<sup>th</sup> November.

Glebe primary will respect a minute silence on the morning of Friday 10<sup>th</sup> November.

Our school Captains and Vice Captains will facilitate the sale of poppies during that week.

Children who wish a poppy should bring a small donation, usually silver. There is no obligation to purchase poppies.

## PRIMARY 1 REGISTRATION IS CHANGING

For children due to start school in August 2024, online registration will take place from Monday 13 until Sunday 26 November 2023.

Further information will be issued to parents and carers from early years providers at the end of October.

Online registration will be live on the Council website from Monday 13 November 2023 by visiting:  
<https://www.north-ayrshire.gov.uk/education-and-learning>



PLEASE  
SHARE  
WITH  
FAMILIES  
IN YOUR  
AREA!



# READ WRITE COUNT



with Family Learning Worker Orlaigh

at

## GLEBE PRIMARY SCHOOL



All children in P2 and P3 in Scotland will be gifted a Read Write Count bag from The Scottish Book Trust. The Family Learning Team are supporting schools and families through a range of initiatives. We are really excited to welcome you into the school to enjoy a fun filled session with your child where you will be able to explore the contents of the bag together. Register interest below and your Family Learning Worker will be in touch.

## DATES and times

Primary 2 families: 2-3pm on Thursday 2nd November

Primary 3 families: 2-3pm on Thursday 9th November



## REGISTER interest

Please fill in the form via this link or QR code:

<https://bit.ly/ReadWriteCount2023>



If you have any questions, contact Orlaigh on 07766442813 or [orlaighmclay@north-ayrshire.gov.uk](mailto:orlaighmclay@north-ayrshire.gov.uk)

CREATIVITY

KINDNESS

RESPONSIBILITY

RESPECT





# ZONES of Regulation



with Family Learning Worker Orlaigh



at

## GLEBE PRIMARY SCHOOL

If your child is in Primary 5-7 and you would like help to support their development and emotional needs, as well as be able to identify and use self-regulation strategies at home, then register your interest below for this 5 week programme for you and your child.

Spaces are very limited. Please register your interest and your Family Learning Worker will be in touch via email.

## DATES and times



9-10am on the following Thursdays:



2nd, 16th & 30th November, 7th & 14th December.



## REGISTER interest

Please fill in the form via this link or QR code:

[bit.ly/glebezones](https://bit.ly/glebezones)



If you have any questions, contact Orleigh on 07766442813 or [orleighmclay@north-ayrshire.gov.uk](mailto:orleighmclay@north-ayrshire.gov.uk)



# FINANCIAL Drop-In



with Family Learning Worker, Orlaigh at

# GLEBE PRIMARY SCHOOL



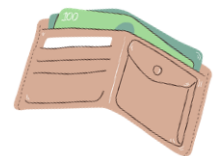
Do you feel like your child would benefit from more awareness of budgeting, spending and debt? Sign up below for a brilliant opportunity to come along and meet with Education Officers from Scottish Charity CHAP. Families will enjoy fun, engaging games, educational quizzes and more. Orlaigh from the Family Learning Team will be there to support. There will be tea, coffee and biscuits for the parents/carers for the last half an hour.

## DATE and time

9-11am on Thursday 9th November



## SIGN up



Please fill in the form via this link or QR code:

[bit.ly/financialdropin](https://bit.ly/financialdropin)



If you have any questions, contact Orlaigh on 07766442813 or [orlaighmclay@north-ayrshire.gov.uk](mailto:orlaighmclay@north-ayrshire.gov.uk)

Please take note of some important information and dates for this term and we will be in touch with further dates/information when items are confirmed.

Thanks for your continued support.

In partnership

Mrs Sanderson  
Head Teacher  
Glebe Primary School

## DIARY DATES

Friday 27 <sup>th</sup> October	Flu Immunisation at Glebe
Friday 27 <sup>th</sup> October	Halloween Dress Up and Activities
Mon 30 <sup>th</sup> Oct- Frid 3 <sup>rd</sup> Nov	Glebe welcomes work experience pupils
Monday 30 <sup>th</sup> October	October's Winning House Extra Play
Thursday 2 <sup>nd</sup> November	Family Learning Team- Zones of Regulation
Friday 3 <sup>rd</sup> November	Learning café 3- Reading themed
Mon 6 <sup>th</sup> -Fri 10 <sup>th</sup> November	Dyslexia Awareness Week
Thursday 9 <sup>th</sup> November	Family Learning Team- Zones of Regulation
Mon 13 <sup>th</sup> -Fri 24 <sup>th</sup> November	P1 Registration Fortnight for next year's P1s Please share with eligible families Online registration details issued by their Early Years Establishment
Tuesday 14 <sup>th</sup> November	Irvine Library Class Visit P1/2B Bookbug Book gifting
Tuesday 14 <sup>th</sup> November	Selected P7s at NAC Sportshall Athletics Competition (info. to follow)
Wednesday 15 <sup>th</sup> November	Irvine Library Class Visit P1M Bookbug Book gifting
Wednesday 15 <sup>th</sup> November	Learning Conversation (Parent's Evening) 3.30-6.00pm & 6.30-9.00pm
Wednesday 15 <sup>th</sup> November	Selected P6 and P7s at Active Schools Football Tournament (info. to follow)



Thursday 16 <sup>th</sup> November	Dress Down Day. Donate a bottle or chocolate or both! PTA/PC fundraiser for School Christmas Fayre
Thursday 16 <sup>th</sup> November	Family Learning Team- Zones of Regulation
Friday 17 <sup>th</sup> November	School Holiday
Monday 20 <sup>th</sup> November	School Holiday
Tuesday 21 <sup>st</sup> November	Pupil and Staff Return
Thursday 23 <sup>rd</sup> November	P7M at Irvine Library Class Visit (PM)
Thursday 23 <sup>rd</sup> November	Selected P7s at Cluster Schools Netball Tournament (info. to follow)
Thursday 23 <sup>rd</sup> November	Family Learning Team- Zones of Regulation
Thursday 23 <sup>rd</sup> November	PTA/PC Meeting 6pm Fullarton Connexions – All welcome
Monday 27 <sup>th</sup> November	Start of Class Enterprise Topic ( 3 week project finishing with the school fayre)
Tue 28 <sup>th</sup> Nov –Fri 1 <sup>st</sup> Dec	Fluoride Varnish (Childsmile)
Thursday 30 <sup>th</sup> November	St Andrew's Day- Wear tartan/Something Scottish- optional!
Thursday 30 <sup>th</sup> November	Family Learning Team- Zones of Regulation Family Learning Team- Family Lego
Thursday 30 <sup>th</sup> November	November's Winning House Extra Play
Mon 4 <sup>th</sup> –Fri 22 <sup>nd</sup> December	Pupils can wear Christmas Clothing e.g. jumpers/dresses/tops/boppers etc. throughout the month of December (optional) *Recycle Christmas Jumpers in November – hand in to the office and we'll pass to families- thanks!
Wednesday 6 <sup>th</sup> OR Thursday 7 <sup>th</sup> December	School Christmas Lunch. NAC to confirm date. Order on ipayimpact in usual way. Menu and info to follow
Thursday 7 <sup>th</sup> December	Family Learning Team- Zones of Regulation Family Learning Team- Family Lego
Friday 8 <sup>th</sup> December	Glebe School Choir at Tesco for Hansel Village (PM) (Info to follow)
Tuesday 12 <sup>th</sup> December	P1-3 private school screening of The Grinch (Animation)

Wednesday 13 <sup>th</sup> December	P4-7 private school screening of Home Alone
Thursday 14 <sup>th</sup> December	Family Learning Team- Zones of Regulation Family Learning Team- Family Lego
Thursday 14 <sup>th</sup> December	December's Winning House Extra Play
Thursday 14 <sup>th</sup> December	Treat for Term 2's House Winners- Activity Afternoon
Friday 15 <sup>th</sup> December	Christmas fayre 1.30-4pm
Monday 18 <sup>th</sup> December	P1, P2, P3 Christmas Activities and Party Day Santa visit with gift (Children come dressed with party outfit)
Tuesday 19 <sup>th</sup> December	P4, Christmas Activities and Party Day (Children come dressed with party outfit)
Wednesday 20 <sup>th</sup> December	P5, P5/6, P6 Christmas Activities and Party Day (Children come dressed with party outfit)
Thursday 21 <sup>st</sup> December	P7 Christmas Activities and Party Day (Children come dressed with party outfit)
Thursday 21 <sup>st</sup> December	Family Learning Team- Family Lego
Friday 22 <sup>nd</sup> December	Church Service 10am Infant Nativity
Friday 22 <sup>nd</sup> December	2.30pm Finish for Christmas Holidays
Mon 25 <sup>th</sup> Dec-Fri 5 <sup>th</sup> Jan	School Holidays
Monday 8 <sup>th</sup> January 2024	<b>Welcome back Pupils and Staff</b>