

WELCOME TO GOOGLE CLASSROOM...

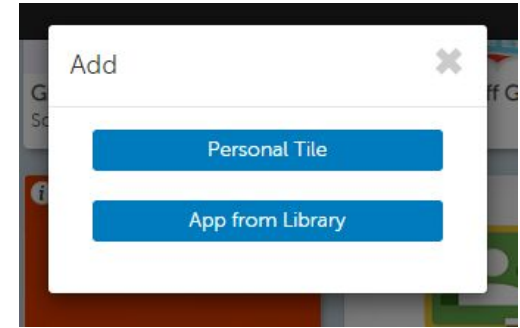
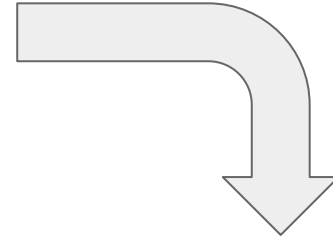
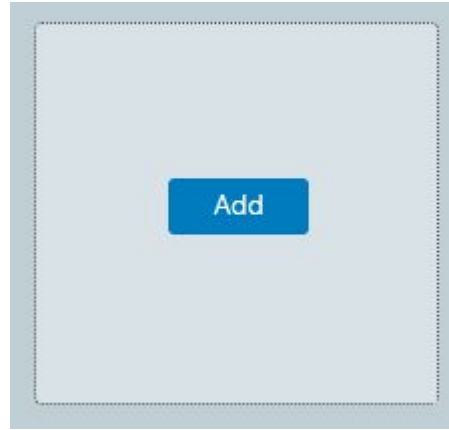
...A BEGINNERS GUIDE TO ACCESSING GOOGLE CLASSROOM FOR PARENTS AND PUPILS

LOGIN TO GLOW

(FOUND AT - [HTTPS://GLOW.RMUNIFY.COM/](https://glow.rmunify.com/))

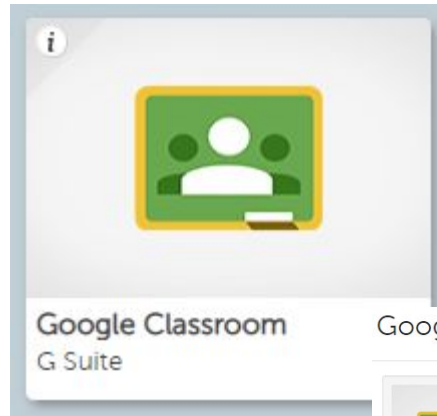
STEP 1

CLICK TO ADD A TILE FROM
THE APP LIBRARY

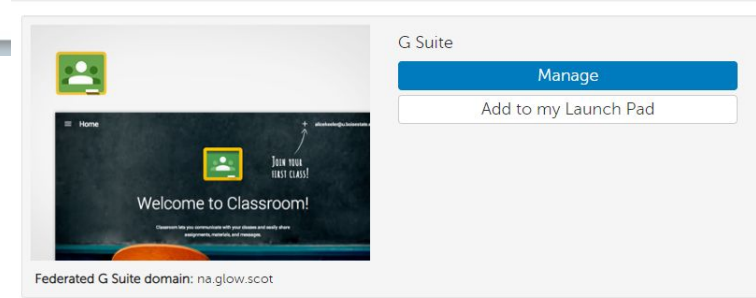
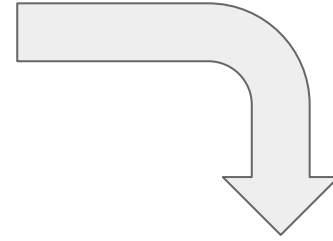


STEP 2

SEARCH FOR GOOGLE CLASSROOM AND ADD

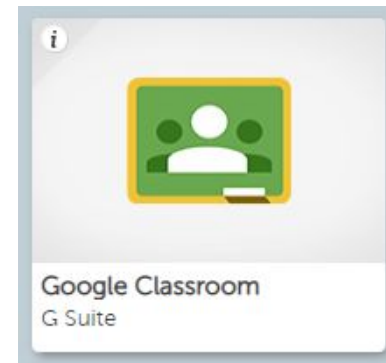
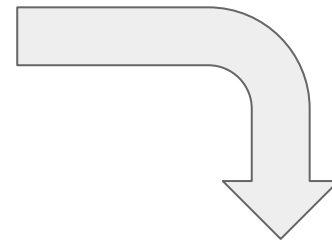
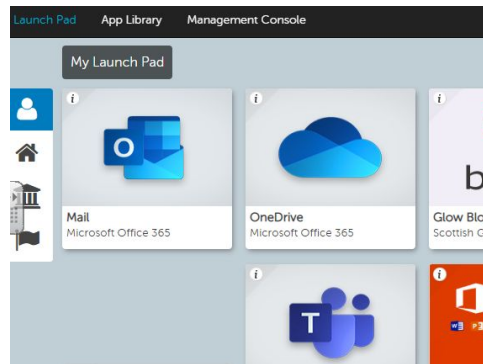


Google Classroom



STEP 3

RETURN TO YOUR
LAUNCHPAD AND CLICK ON
THE GOOGLE APP. TILE



STEP 4

LOGIN TO THE GOOGLE
CLASSROOM APP. USING
THE CODE OR E-MAIL LINK
PROVIDED TO YOU BY YOUR
CLASS TEACHER

A screenshot of the Google sign-in page for Chrome. At the top is the Google logo. Below it is the heading "Sign in to Chrome". The text reads: "Sign in with your Google Account to get your bookmarks, history, passwords and other settings on all your devices". There is a text input field with the placeholder "Email or phone" and a vertical cursor. Below the field is a link "Forgot email?". Further down, it says "Not your computer? Use Guest mode to sign in privately." with a link "Learn more". At the bottom left is a link "Create account" and at the bottom right is a blue button labeled "Next".

Google

Sign in to Chrome

Sign in with your Google Account to get your bookmarks, history, passwords and other settings on all your devices

Email or phone

[Forgot email?](#)

Not your computer? Use Guest mode to sign in privately.
[Learn more](#)

[Create account](#) [Next](#)

STEP 5