



North Ayrshire Council
Comhairle Siorrachd Àir a Tuath

North Ayrshire Council: Education Directorate

Beith Primary School

School Handbook

Session: 2026/27



Contents

Head Teacher Introduction	4
Communities & Education Directorate	5
▪ Directorate Aims and Priorities	
Section 1: School Information	6
▪ School Aims, Values, Ethos	
▪ School Contact Details (Address, Telephone, Email, Fax)	
▪ School Staff	
▪ School Calendar/Holidays	
Section 2: School Procedures	10
▪ School Security	
▪ Positive Relationships	
▪ Playground Supervision	
▪ Absence from School Premises at Breaks	
▪ School Dress Code	
▪ Dress Code for PE	
▪ Personal Belongings	
▪ Mobile Phones	
▪ Information in Emergencies	
▪ Listening and Learning	
Section 3: Footwear, Clothing, Free School Meals and Transport.....	14
▪ Footwear and Clothing Grants	
▪ Free School Meals	
▪ School Transport Policy	
Section 4: School Registration, Enrolment and Attendance.....	15
▪ Registration and Enrolment	
▪ Attendance at School	
▪ Structure of Classes	
▪ Transfer to Secondary School	
Section 5: Curriculum for Excellence.....	17
▪ Curriculum for Excellence	
▪ The Capacities	
▪ Extra-Curricular Activities	
▪ Assessment and Reporting	
▪ Homework	

Section 6: School Improvement	22
▪ S&Q Report/Improvement Plan	
Section 7: Support for your Child.....	23
▪ Additional Support for Learning	
▪ Dispute Resolution Procedures	
▪ Further Support	
▪ Equalities	
▪ Equality Act 2010	
▪ Child Protection	
▪ Inclusion	
▪ GIRFEC	
▪ Psychological Services	
▪ Data Protection	
▪ Medical and Health Care	
Section 8: Parental Involvement	30
▪ Parent Council	
▪ Home School Links	
▪ Reports to Parents	
▪ Homework	
▪ School Committees	
Section 9: Pupil Data Collection and Protection Policies.....	33
Appendix 1: Important Contacts	35

Head Teacher Introduction

INTRODUCTION

Welcome to Beith Primary School handbook. The handbook contains information regarding all aspects of school life that will be helpful to parents.



Beith Primary is a school which has a clear focus on learning and teaching, a 'family of learners'; whose staff are fully motivated and committed to lifelong learning; where learning is at the centre of everything everyone does; where expectations are high and there's mutual respect, honesty and lots of fun.

At Beith Primary we aim to ensure that all children achieve their potential in every area of a broad curriculum and leave the school with those skills which will enable them to confidently undertake the next stage of their education. We also try to ensure that each child attains the objectives set out for each area of the curriculum.

Every member of staff does their utmost to establish an ethos that is happy and industrious, where the children will learn to be independent, to be responsible for themselves and to carry out their tasks in a spirit of co-operation, courtesy and respect for others. It is our belief that the school is an integral part of the community and by creating a welcoming environment, by maintaining good relations with parents/carers and the wider community and by being involved in local events we will do our best to promote that ideal.

The role of parents cannot be stressed too greatly. A number of parents are already involved in school activities and this has been of great benefit to the children. We would hope to maintain, and indeed increase, this involvement, thus enhancing the provision within the school. It is vital that parents/carers, as well as staff, regard the school in a positive manner.

This year our main priorities include a focus on developing skills based learning across the school; enhanced pedagogy in Literacy & Numeracy and the promotion of positive health and wellbeing of our children through rights based learning. In all of these, we will keep you fully informed of our progress on a regular basis.

F Dunlop (Headteacher)

Education Directorate**What we want to achieve****Our Overall Aim**

Ensuring our children and young people experience the best start in life.

Our Priorities

- We will create the conditions for our children and young people to access the highest quality learning experiences from ages 3-18.
- We will support our children and young people to become successful learners, confident individuals, effective contributors and responsible citizens.
- We will offer opportunities to our young people and their families to play a more active role in school life and encourage more participation in learning.
- We will work with all young people to build their resilience, supporting their mental health and physical well-being.



Section 1: School Information

School Contact Details:

Beith Primary School & Early Years Class, Glebe Road, Beith, KA15 1EZ

Tel: 01505 502363

E-mail: Beith@ea.n-ayrshire.sch.uk

Website: <https://blogs.glowscotland.org.uk/na/beithprimary/>

PLEASE CONSULT SCHOOL WEBSITE FOR ALL SCHOOL INFORMATION

Beith Primary is a non-denominational, co-educational school. The present roll is 322 pupils who are in 13 classes from Primary 1 to Primary 7.

The Early Years class (EYC) has an additional 80 children, 48 in the morning and 48 in the afternoon. Families can choose from a number of attendance options throughout term time.

The planning capacity of the school is 593 and the working capacity is 538.

The current roll for each year group is:

P1	P2	P3	P4	P5	P6	P7
46	42	42	34	36	54	53

The likely intake for the next three years is:

2025	2026	2027
46	48	52

The building is a semi-open plan design and has a number of facilities available. These include a games hall, boardroom, auditorium, stage and playing field.

The school is on one level and has access for all.

There is an **After School Care** facility available, details of which can be obtained by calling 01505 227400 or emailing hello@beithhive.co.uk

School Aims, Values, Ethos

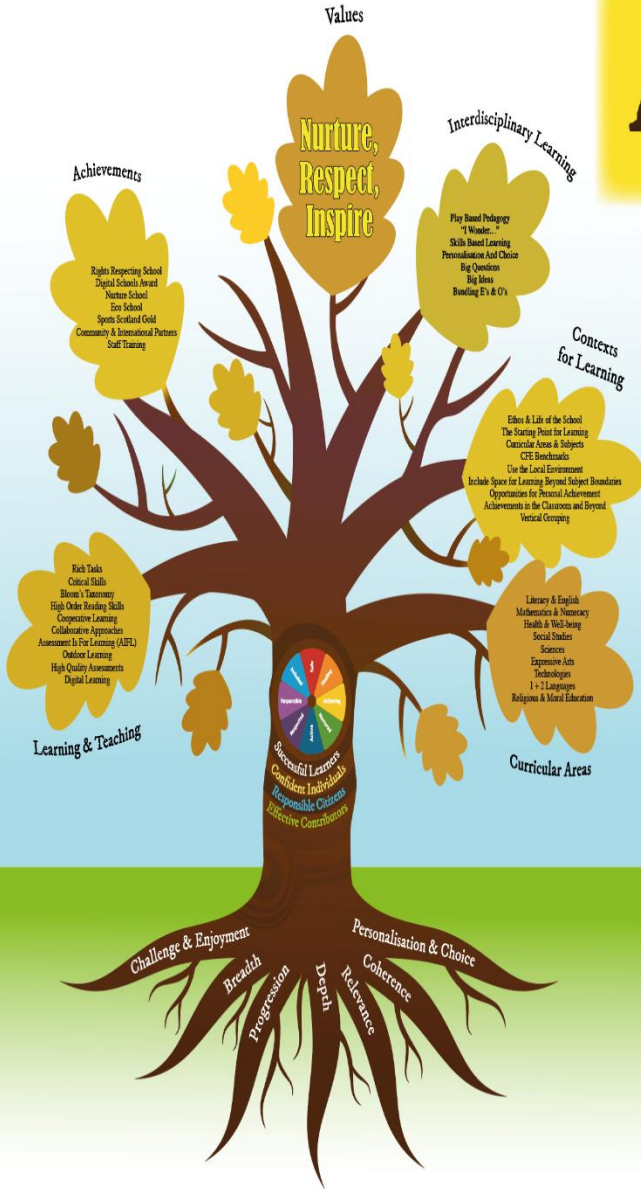
NURTURE

RESPECT

INSPIRE

A Family of Learners

"We aim to provide a safe, happy and caring environment where children will learn to be independent, to be responsible for themselves and to carry out their tasks in a spirit of co-operation, courtesy and respect for others."



SCHOOL STAFF TEAM

Headteacher

F Dunlop

Depute Heads

R Lambert & K Docherty

It is the duty of the Headteacher to manage the school to the benefit of the pupils and the wider community in compliance with the requirements of the statutes relating to the provision of education and the general duty of care owed to staff and pupils. The Headteacher must formulate aims and policies for the school and ensure their communication to all appropriate parties. It is also the duty of the Headteacher to act as advisor to the Parent Council and to develop the corporate life of the school.

The Depute Headteachers are required to assist the Headteacher in the overall management of the school. It is the responsibility of the Depute Headteachers to be familiar with and instrumental in implementing the policies which have been established to achieve the aims of the school. The Depute Headteachers have a vital role to play in developing effective communication and positive links between the school and the wider community. In addition the Depute Headteachers have a duty to be aware of the administrative requirements of the school. The Depute Headteachers are responsible for a department and have a duty to develop and enhance the corporate life of that department. The Deputies are accountable to the Headteacher.

Principal Teacher:

S McMillan,

Teaching Staff:

A Donnelly, P Kennedy, C McCrory, T Stevenson,

J MacGregor, N McCrea, L Colville, M Lachlan, L Frew,

K Hamilton, K Wallace, C Jappy and

R Snape (part time). G Piacentini (temp)

Targeted Support Teachers:

N. Kennedy, E Krawczyk

Early Years Manager:

Annemarie McKenna

Early Years Practitioners:

M Carberry (SEYP), N Lyons, M. Meechan, C. Cliff, C Thomson,
E Gorman, R Brownlow, Jenna Maxwell, Joanne Cook, Suzanne
Simpson, Helen Armstrong (EYA)

Support Staff:

C Thom, J McCafferty, M. Robin,

M Buckland, L McCafferty, J Danks, N Thomson

A Muirhead, L Mess, V Turner & L McLeod (PEF)

Janitor:

D Ingles

School holidays and in-service dates 2026/27 (all schools except Arran)

Pupils on holiday	Yellow
Staff only in-service days	Cyan
Children in School	Purple

August 2026

Su	M	T	W	Th	F	Sa
						1
2	3	4	5	6	7	8
9	10	11	12	13	14	15
16	17	18	19	20	21	22
23	24	25	26	27	28	29
30						

September 2026

Su	M	T	W	Th	F	Sa
		1	2	3	4	5
6	7	8	9	10	11	12
13	14	15	16	17	18	19
20	21	22	23	24	25	26
27	28	29	30			

October 2026

Su	M	T	W	Th	F	Sa
				1	2	3
4	5	6	7	8	9	10
11	12	13	14	15	16	17
18	19	20	21	22	23	24
25	26	27	28	29	30	31

November 2026

Su	M	T	W	Th	F	Sa
1	2	3	4	5	6	7
8	9	10	11	12	13	14
15	16	17	18	19	20	21
22	23	24	25	26	27	28
29	30					

December 2026

Su	M	T	W	Th	F	Sa
		1	2	3	4	5
6	7	8	9	10	11	12
13	14	15	16	17	18	19
20	21	22	23	24	25	26
27	28	29	30	31		

January 2027

Su	M	T	W	Th	F	Sa
					1	2
3	4	5	6	7	8	9
10	11	12	13	14	15	16
17	18	19	20	21	22	23
24	25	26	27	28	29	30
31						

February 2027

Su	M	T	W	Th	F	Sa
	1	2	3	4	5	6
7	8	9	10	11	12	13
14	15	16	17	18	19	20
21	22	23	24	25	26	27
28						

March 2027

Su	M	T	W	Th	F	Sa
	1	2	3	4	5	6
7	8	9	10	11	12	13
14	15	16	17	18	19	20
21	22	23	24	25	26	27
28	29	30	31			

April 2027

Su	M	T	W	Th	F	Sa
				1	2	3
4	5	6	7	8	9	10
11	12	13	14	15	16	17
18	19	20	21	22	23	24
25	26	27	28	29	30	

May 2027

Su	M	T	W	Th	F	Sa
						1
2	3	4	5	6	7	8
9	10	11	12	13	14	15
16	17	18	19	20	21	22
23	24	25	26	27	28	29
30	31					

June 2027

Su	M	T	W	Th	F	Sa
		1	2	3	4	5
6	7	8	9	10	11	12
13	14	15	16	17	18	19
20	21	22	23	24	25	26
27	28	29	30			

July 2027

Su	M	T	W	Th	F	Sa
				1	2	3
4	5	6	7	8	9	10
11	12	13	14	15	16	17
18	19	20	21	22	23	24
25	26	27	28	29	30	31

Secondary Schools - Pupil attendance will be 190 after deducting 5 in-service days
 Primary Schools - Pupil attendance will be 190 after deducting 5 in-service days.

Section 2: School Procedures

School Security

North Ayrshire Council has introduced procedures to ensure the safety and security of children and staff when attending or working in a school. A number of security measures are used including the use of a visitors' book, badges and escorts while visitors are within the school building. Any parent/carer or visitor at a school for any reason will be asked to report to the school office. The school staff will then make any necessary arrangements in connection with the visit to the school.

It is the policy of the school that any member of staff will approach a visitor and ask for verification of identity. This measure ensures that children work in a safe and protected environment. We appreciate your support in carrying out all of the above measures.

Positive Relationships and Behaviour

The school is committed to developing a nurturing approach and promoting positive relationships. Like every community, our school is built on the relationships within it, across it and its connections with others. Every member of staff is responsible for establishing and maintaining positive relationships with each other, with parents and with partners and most importantly with the young people in their care.

Our expectations of behaviour for children and young people are high. Some children may require additional support in relation to their behaviour, and the school will work positively with the young person and the parents, and other partners, as appropriate, to ensure positive outcomes are achieved.

North Ayrshire Council is committed to the principles of restorative practices. This is a solution-focused approach that builds positive, healthy relationships and repairs harm through respectful dialogue. We want our school to be safe and inclusive for all and, as such, recognise that there is no place for violence or aggression. Our understanding of child development has enabled us to gain a greater insight into the reasons behind the behaviour of children and young people. This allows us to work with empathy and compassion for children and young people who are learning to regulate their emotional responses, whilst also maintaining the view that violence and aggression has no place within our establishments. The school has a code of conduct to ensure the safety and well-being of all and parents are asked to support the school fully in this matter.

Playground Supervision

The Council meets the terms of the legal requirement that pupils be supervised in the playground by at least one adult during the interval or lunchtime if there are fifty or more pupils at the school. Our policy complies with the terms of the Schools (Safety and Supervision of Pupils) (Scotland) Regulations 1990.

An adult presence is provided in playgrounds at all break times. Pupils who travel by contracted school transport and arrive at school more than ten minutes before the start of the school day have accommodation allocated to them within the school during inclement weather.

Absence from school premises at breaks

Schools have a duty to look after the welfare of their pupils. This means that the staff should take the same care of pupils as a sensible parent would take, and this includes taking reasonable care of pupils' safety during intervals and lunchtimes.

It is the policy of North Ayrshire Council that pupils should not leave the school grounds at intervals. Primary pupils should only leave school grounds at lunchtimes when they are going home for lunch with their parents' agreement. Parents should put this request in writing to the Head Teacher. Pupils will leave and return through main entrance door of the school.

Parents should encourage their children to follow these rules in the interests of safety.

School Dress Code

It is the policy of North Ayrshire Council to support the introduction of a reasonable and flexible dress code in schools in its area. The Council encourages each school to adopt its own code, after consultation with parents and pupils.

The Council believes that establishing a school dress code has many benefits. These include improvements in safety, security, positive behaviour and community spirit and a decrease in bullying and in expense for parents.

The Council will support schools in encouraging and helping pupils to conform to the chosen dress code. Some types of clothing will not be allowed at school in any circumstances, for reasons of safety, decency or wellbeing.

Types of clothing which will not be allowed include:

- Clothes which are a health or safety risk
- Clothes which may damage the school building
- Clothes which may provoke other pupils
- Clothes which are offensive or indecent
- Clothes which encourage the use of alcohol or tobacco

Our school policy is that pupils should wear school uniform at all times (unless otherwise directed). This includes school trips and occasions where pupils are representing the school.

The school uniform comprises:

- **brown or yellow sweatshirt / polo shirt / cardigan**
- **white or yellow shirt / blouse with school tie**
- **dark (brown), plain coloured trousers / skirt**
- **dark shoes**
- **school blazer (optional)**

All items of clothing should be **clearly labelled** with the child's name in case of loss. It is appreciated that parents and pupils are distressed over the occasional loss of pupils' clothing and/or personal belongings. Parents are asked to assist in this area by ensuring that valuable items of clothing or personal belongings are not brought to school. We offer a Uniform Swap shop which carries many new and used items to support families. These can be accessed via the school office or a Microsoft form sent on Seesaw.

Personal Belongings

It is appreciated that parents and pupils may be distressed over the occasional loss of pupil's clothing and/or personal belongings. Parents are asked to assist by ensuring that valuable items of clothing or personal belongings are **NOT** brought to school.

Parents should note that the authority does not carry insurance to cover the loss of such items.

Dress Code for PE

For health and safety reasons all children must wear suitable clothing for PE. This consists of shorts and t-shirts with soft shoes for indoor activities (also available in Uniform Shop and we carry some spare items to support children who attend without kit).

We adhere strictly to health and safety guidelines and pupils must remove any item that may cause danger, i.e. metal buckles, jewellery (including earrings). These items are the responsibility of the pupil. Long hair should be tied back.

School Meals

Meals are served daily from the multi-choice cafeteria, free to EY – P5. The meals are planned to offer a healthy diet for the children. Please inform us if your child has any specific allergies. Parents of children who require a special diet can arrange this by contacting the school or Early Years Class.

There are arrangements in place for children who would prefer to eat a packed lunch.

Mobile Phones

While the benefits of mobile phones are recognised, they can be a serious distraction to work. Pupils whose mobile phones disrupt lessons can have them confiscated until the end of the school day. Repeated disruption may result in phones being retained until uplifted by a parent.

Inappropriate use of text messages and/or photographs/recordings (video and audio) whilst in school may be treated as a breach of the school's code of conduct or a serious incident, which could be referred to the police.

Information in Emergencies

We make every effort to maintain a full educational service but on some occasions circumstances arise which lead to disruption. Schools may be affected by, for example, severe weather, and temporary interruption of transport, power failures or difficulties of fuel supply. In such cases, we shall do all we can to let you know about the details of closure or re-opening. We will keep you in touch by using letters, Seesaw App, texts (Xpressions), NAC website, notices in local shops and community centres, announcements in the press and local radio stations.

Should you have doubts about deteriorating conditions during the day, it may be advisable to contact the school. Parents should ensure that the school is aware of the emergency arrangements made for their child and have responsibility to update us with contact numbers.

Listening and Learning

It is the policy of North Ayrshire Council to try to encourage feedback on the education service from parents and pupils. This is part of our overall commitment to giving the best possible service and to working in partnership.

We are therefore very interested in feedback of all kinds, whether it is compliments, suggestions or complaints. If you wish to register a comment of any type about the school you can do this by writing, telephoning or making an appointment to see someone. All feedback is welcome and helps us keep in touch.

If, in particular, you have a complaint about the school please let us know. It is better that these things are shared openly and resolved fairly, rather than being allowed to damage the home/school relationship. There will be no negative consequences arising from making a

complaint and we will deal with the issue as confidentially as possible. If we have made a mistake we will apologise quickly and clearly and try to put things right.

There are some things which you should note in relation to making a complaint:

- The Council has a Two Stage procedure when handling complaints from parents and members of the public. More details on the two stages can be found in the Council's complaint page here: [the Council's complaint webpage](#).
- It is helpful if complaints are made initially to the school's Head Teacher. This ensures the school is made aware of what is going on and has an opportunity to investigate and try to resolve the issue at Stage One first.
- We try to resolve all complaints as quickly as possible but if a complaint is complex more time may be needed to investigate. It is therefore helpful if you can provide full details of the issue at the outset and ask for an early appointment to discuss it.
- If you are not satisfied with a response you receive at Stage One, you can ask that your complaint is escalated to Stage Two. Should you wish to do this you should contact Education Services at Cunninghame House, Irvine, KA12 8EE or by telephone on (01294) 324400.
- If, after receiving the Stage Two final response letter you remain dissatisfied you can ask the Scottish Public Services Ombudsman to consider your complaint and we'll tell you how to do this in the Stage Two response letter.
- Parent Councils have an important role in developing links between the school and the wider parent body and can often be helpful in dealing with issues of general concern. However, parents are advised that individual, personal complaints are not appropriate for raising via Parent Councils due to the possible need for confidentiality.
- Please note you can also raise concerns you may have with your local Councillor, MSP or MP but these will be handled under a different process to the Two Stage complaint process.

Section 3: Educational Grants: Footwear, Clothing, Free School Meals and Transport

Footwear and Clothing Grants

Parents receiving Universal Credit will normally be entitled to grants for footwear and clothing for their children. Universal Credit claimants' monthly income must not exceed £660.00, however, some parents earning more than this may still be eligible.

Parents who receive Income Support, Income based Job Seeker's Allowance, any income related element of Employment and Support Allowance, Support under part V1 of the Immigration and Asylum Act 1999 may also still be entitled to grants for footwear and clothing for their children.

Free School Meals

Children of parents receiving Universal Credit (claimants' monthly income must not exceed £850.00), Income Support, Income based Job Seeker's Allowance, any income related element of Employment and Support Allowance, Support under part V1 of the Immigration and Asylum Act 1999 are entitled to a free midday meal and free milk. Parents and Carers should contact 01294 310000 for further information.

Please Note: **ALL** pupils in P1-5 are entitled to a free school meal, which includes milk.

Other than Primary 1 to Primary 5 pupils, only those children whose parents receive job seeker's allowance or income support will be entitled to free milk. Milk may however be available for purchase in the school during the lunch period.

Further information can be found on the [Grants and Allowances](#) webpage.

Parents who may be unsure whether they can apply should contact the Council Contact Centre on 01294 310000 or the Council's Welfare Reform Team on 0300 99 4606 for further advice. Information and application forms may be obtained from schools.

Pupils are supplied with a menu in advance and we encourage you to discuss this with your child before school and pre-order their lunch options on the iPay site.

You are welcome to provide your child with a packed lunch if you prefer and we encourage pupils to make healthy choices and eat a balanced diet. We request that pupils do not bring in cans or bottles of fizzy or isotonic juice to drink and that take-away food is not provided as a packed lunch.

School Transport

North Ayrshire Council has a policy of providing free transport to all pupils who live more than two miles walking distance from their catchment primary school or three or more miles from their catchment secondary school using the shortest suitable walking route. In addition, free transport may also be provided for whole or part of the journey between a pupil's main address and school (or other educational establishment) when the criteria outlined in section 4 of the [School Transport Policy](#) is met.

Applications for mainstream transport are made by parents and carers using North Ayrshire Council's Transport Hub [transport system](#). Applications may be submitted throughout the year and should be made as soon as confirmation of a place at a catchment establishment has been received. Please note free school transport will not be provided following a successful placing request. If you believe your child may require transport for another reason, please review the entitlement criteria in the School Transport Policy under Section 4 before discussing this with the school.

If places are available and no additional costs is incurred by the local authority, it may be possible to apply for privilege seat in transport provided by the authority, please liaise with North Ayrshire Transport Hub for further information (transporthub@north-ayrshire.gov.uk / 01294 541613). Where free transport is provided it may be necessary for pupils to walk a short distance to the vehicle pick-up point. Walking distance in total, including the distance from home to the pick-up point and from the drop-off point to the school in any one direction, will not exceed the Council's limits (see above section). It is the parents' responsibility to ensure that their child arrives at the pick-up point on time. It is also the parents' responsibility to ensure that their child behaves in a safe and acceptable manner while boarding, travelling in and leaving the vehicle. Misbehaviour can result in children losing the right to free transport.

Section 4: School Registration, Enrolment and Attendance

Registration and Enrolment

The date for registration of school beginners takes place in **November** each year. Pupils should be registered in the school for their catchment area.

Parents are provided with information about the school and procedures for making placing requests, if required. Arrangements for meetings with parents and induction days for pupils will be notified during the spring and summer terms.

Parents of pupils who have moved to the area or who wish their child to transfer to the school should contact the school office for information about appropriate procedures and to arrange a visit to the school.

Parents are welcome to contact the Head Teacher at any time by visiting or telephoning the school.

Attendance at School/Lateness

It is the responsibility of parents of children of school age to educate their child(ren). Most do this by ensuring that their child(ren) attend(s) school regularly.

Attendance is recorded twice a day, morning and afternoon. Absence from school is recorded as authorised, unauthorised or temporarily excluded.

Parents are asked to inform the school by letter or telephone if their child is likely to be absent for some time, and to give the child a note on his or her return to school, confirming the reason for

absence. If there is no explanation from a child's parents, the absence will be regarded as unauthorised.

Every effort should be made to avoid family holidays during term time as this both disrupts the child's education and reduces learning time. Parents should inform the school by letter, before going on holiday, of the dates. Such absence will be authorised only where certain and very specific family circumstances exist. The majority of family holidays taken during term time will be categorised as unauthorised absence.

Parents may request that their children be permitted to be absent from school to make an extended visit to relatives. Only written requests detailing the destination, the duration and the provision that will be made for their continuing education will be granted. Such extended absences will be recorded separately from the normal attendance and absence information.

The School Inclusion Worker investigates unexplained absence, and the authority has the power to write to, interview or prosecute parents, or refer pupils to the Reporter to the Children's Panel, if necessary.

Structure of Classes

Primary schools educate pupils at seven broad year stages, Primary 1 to Primary 7. A year stage is defined as a group of pupils entering primary education at a common date. Schools are staffed based on the total number of pupils. However, the numbers of pupils at each year stage will vary. This means that Head Teachers are required to organise classes to make best use of available staff, resources and space to the benefit of all children in the school.

Pupils may, therefore, be taught in a single stage class or a composite class where two or more year stages are grouped together. This may also change as pupils move from one year to the next.

National guidelines on the curriculum indicate that pupils should progress through learning experiences tailored to their own needs and abilities. This means that pupils in all classes follow programmes designed to help them progress at their own level. This applies to all pupils regardless of whether or not they are in a composite or single year stage class.

The National agreement on class sizes states that the maximum number of pupils in a class is 25 in P1, 30 in P2 – P3, and 33 in P4 -7. In a composite class the maximum number is 25.

Transfer to Secondary School

Pupils are normally transferred between the ages of eleven and a half and twelve and a half, so that they will have the opportunity to complete at least 4 years of secondary education. Parents will be informed of the arrangements no later than January of the year preceding the date of transfer at the start of the new session.

Beith Primary is an associated primary of;

Garnock Community Campus
Address: Beith Road, Glengarnock, KA15 3BF.
Tele No: 01505 682685 / 683893

During their time in P7, pupils visit Garnock Community Campus as part of the induction programme. Teachers from local primary schools and their secondary colleagues work together to create a robust transition programme which will be completed throughout their Primary 7 year and written information is passed onto the secondary school to ensure continuity in their learning.

NURTURE

RESPECT

INSPIRE

Teachers from both schools liaise to ensure a smooth transition which focuses on progression for pupils. Parents will be informed of the details of the visits when appropriate.



Section 5: Curriculum for Excellence

Curriculum for Excellence is the national curriculum for Scottish schools for learners from age 3 to 18. It aims to raise standards, prepare our children for a future they do not yet know and equip them for the jobs of tomorrow in a fast changing world.

Curriculum for Excellence enables professionals to teach subjects creatively, to work together across the school and with other schools, to share best practice and explore learning together. Glow, Scotland's unique, world-leading, online network supports learners, teachers and families in this.

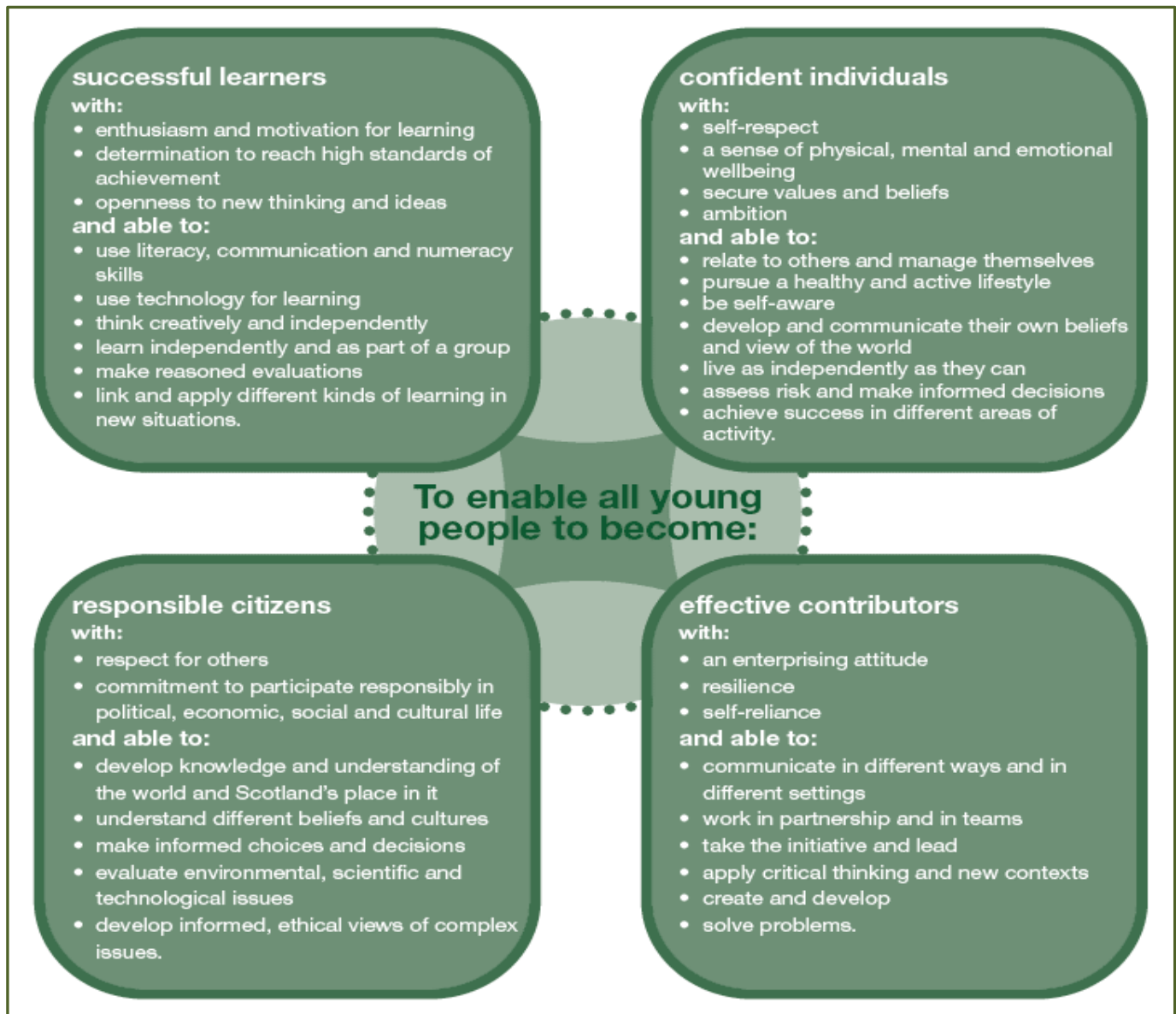
Teachers and practitioners will share information to plan a child's "learning journey" from 3-18, ensuring children continue to work at their own pace whilst providing challenge upon which they can thrive.

Curriculum for Excellence balances the importance of knowledge and skills. Every child is entitled to a broad and deep general education where every single teacher and practitioner will be responsible for literacy and numeracy – the language and number skills that unlock other subjects and are vital to everyday life. There is emphasis too on health and wellbeing – to ensure that the school is a place where children feel safe and secure.

Curriculum for Excellence develops skills for learning, life and work to help young people go on to further study, secure work and navigate life. It brings real life into the classroom, making learning relevant and helps young people apply lessons to their life beyond the classroom. It links knowledge in one subject area to another helping children understand the world and make connections. It develops skills so that children can think for themselves, make sound judgements, challenge, enquire and find solutions.

Children's progress is assessed using a broad range of approaches to ensure children achieve their potential. Ultimately, Curriculum for Excellence aims to improve our children's life chances, to nurture **successful** learners, **confident** individuals, **effective** contributors, and **responsible** citizens, building on Scotland's reputation for great education.

Curriculum for Excellence: The Capacities



Further Information about Curriculum for Excellence and the Experiences and Outcomes can be found on the Curriculum for Excellence website.

Extra-Curricular Activities

The number and variety of activities that a school offers out with the normal school curriculum contribute greatly to the ethos of the school and enhance its position in the community. At Beith, we have established a reputation for providing such a variety and a very large number of children have benefited enormously from the activities offered. On-going activities include choir, badminton, athletics, football, cross country, coding club, rugby, netball, botcha, basketball, homework, art & craft, handball, nurture and Clubercise.

The school website has an up to date list of clubs currently available and this can change across the year.

Assessing Children's Progress in the Broad General Education (BGE) Early Years – end of S3

Assessment is a central part of everyday learning and teaching for children and young people. Evidence of progress is gathered on an ongoing and informal basis through asking questions, observing children working together and making formative comments on their work. Children may also assess their own work or that of their classmates; this is called self and peer assessment. Some assessment is more formal such as projects, investigations and standardised assessments.

The assessment of children's progress throughout the BGE (Early Years – S3) is based on teachers' professional judgement. Teachers draw on their professional knowledge and understanding of the child; on the benchmarks for literacy and numeracy, which provide clear information about what children and young people should be able to do and demonstrate by the end of a Curriculum for Excellence Level; and on a wide range of assessment information.

Teachers of P1, P4, P7 and S3 are asked at the end of every school year whether children have achieved the relevant Curriculum for Excellence level for their stage in reading, writing, talking and listening (literacy), and their ability to understand and work with numbers (numeracy). Most children are expected to have achieved the early level by the end of P1, first level by the end of P4, second level by the end of P7 and third or fourth level by the end of S3.

The government has also introduced national standardised assessments (NSA) which cover some aspects of reading, writing and working with numbers. These assessments are completed online and are automatically marked by the online system giving teachers immediate feedback to help plan next steps and support children's progress.

Teachers remain best placed to know how the children in their class are progressing. Their professional judgement will continue to be the most important way of assessing your child's progress at school.

Parents, families and carers have a key role in helping children to learn. Your child's teacher will keep you informed about their progress. Please contact us if you have any concerns about their learning, assessment or for more information on how you can support your child's learning at home.

Homework

Parents, carers and families have a very important role in helping children get the best out of school and it is important to take an active interest in your child's progress at school. This can be done by:

- Encouraging hard work and high standards at all times
- Stressing the importance and relevance of what is learned at school
- Supporting the school's policy on homework and discipline

The type of homework will vary depending on the age and ability of individual pupils. Reading commonly forms part of the homework set and will be specified by the teacher. Learning to read can be challenging and the process is made easier if families read with their child and discuss the story and pictures in a way that encourages enjoyment and a love of books and stories.

In the early and middle stages oral reading should be practiced regularly at home whereas in the upper primary, where children are competent in the mechanics of reading, a greater emphasis may be placed on silent reading and comprehension. Reading for enjoyment should be

encouraged at all stages.

Spelling is also an important part of homework from P3 onwards (although some children may be asked to practise even earlier). Maths homework will be given to consolidate understanding and proficiency at all stages of the school. **Seesaw** is used to share and record homework tasks.

From time to time pupils are given assignments and personal projects which may involve research, investigation, preparing a speech, learning a poem or a similar activity.

We really appreciate the involvement of parents, carers and families and are very grateful to those who so faithfully sign work to confirm that they have seen each piece of work.

Section 6: School Improvement

Standards & Quality Report / School Improvement Plan

Schools in North Ayrshire follow a Quality Improvement process designed to highlight strengths and identify areas for improvement. The process is based on the school's self-evaluation process with Heads of Service and Senior Managers involved in at least three formal validation visits each session.

This validation process involves talking to pupils, staff and parents about learning and improvements made by the school. This results in actions for improvement for the school to take forward in their planning process.

There is also a comprehensive programme of establishment reviews which take place over a 4-year cycle. Establishment leaders work in partnership with their link Senior Manager and a team of peer reviewers to plan the two-day visit which focuses on purposeful professional dialogue around improving outcomes for learners. Head Teachers also engage in a self-directed programme of peer support and challenge looking specifically at learning, teaching and assessment. These processes are based upon standards and expectations contained within the following National Standards documentation:

- National Improvement Framework
- How Good is Our School? 4
- How Good is Our Early Learning and Childcare?
- How Good is OUR School?

A Standards and Quality Report and School Improvement Plan are produced on an annual basis by every school and centre. Staff, Parents/ Carers, Young People and School Partners will play an active role in the development of these key school documents.

Beith Primary Standards & Quality Report can be found at;

[School Information | Beith Primary \(glowscotland.org.uk\)](https://www.glowscotland.org.uk/primary/BeithPrimary/SchoolInformation)

Our recent HMIE Inspection report can be found at:

<https://education.gov.scot/education-scotland/inspection-reports/reports-page//?id=1621>

Section 7: Support for your Child

Equalities

In line with North Ayrshire Council policy, educational provision is open to all pupils, regardless of sex, age, religion, race, disability or any other potential barrier and all reasonable measures will be taken to ensure that the curriculum is available to every child. Schools also have a duty to promote equality and to eliminate racist and other discriminatory behaviours.

Equality Act 2010

The Equality Act 2010 has been drawn up to tackle inequality and prevent discrimination against people on the basis of 'protected characteristics'. It brings together several existing laws and aims to make understanding the law simpler and also introduces a new single public sector equality duty, which requires public bodies to actively advance equality.

The duties set out in Chapter 1 of Part 6 of the Equality Act apply to all schools. These provisions protect pupils at the school and in the case of admissions, those applying or wishing to apply for admission. Former pupils are also protected from discrimination or harassment.

Guidance on the Act and its requirements for schools in relation to the provision of education can be accessed via the Scottish Government website via here:

<https://education.gov.scot/improvement/research/equality-act-2010/>

Child Protection

The Education Service has a fundamental duty to contribute to the care and safety of all children and young people in North Ayrshire. In fulfilling this duty, the service must engage in close partnership with parents/carers and relevant agencies, primarily the Health and Social Care Partnership and where appropriate the Scottish Children's Reporter's Administration. Partnership working is crucial to safeguard and protect children and young people.

Staff utilise the Service Operating Procedure G2 "Protecting and Safeguarding Children" which provides guidance around our duties of care. The Education Service is one of the key partners in the North Ayrshire Child Protection Committee, a multi-agency group which takes the lead role in ensuring that our children and young people are cared for, protected from harm, and grow up in a safe environment.

Each establishment has a named Child Protection Co-ordinator who is the main point of contact for staff and external agencies seeking information or guidance on child protection matters. On the first in-service day of each academic session all staff receive an update on child protection policies, safeguarding and procedures.

Inclusion

North Ayrshire Council is committed to supporting the well-being and educational progress of *all* learners including those with Additional support needs. Including learners requires all staff to demonstrate commitment, innovation and flexibility in order to ensure that all children and young people have access to quality learning opportunities and experiences. Our Inclusion Strategy states that:

NURTURE

RESPECT

INSPIRE

- An inclusive approach to education supports an ethos of achievement and high expectation, recognises difference, respects these differences and sees differences between learners as opportunities for learning.
- An inclusive approach to education promotes tolerance and a positive understanding of diversity.
- An inclusive approach to education alleviates the barriers to learning, supports the achievement of all and has positive relationships at its heart.

The presumption of mainstream as outlined in the Standards in Scotland's Schools (2000) sets out that children will be educated in a mainstream setting unless exceptional circumstances apply. North Ayrshire therefore has a duty to ensure that clear assessment outlines the additional support needs of a child or young person which may require support in an alternative provision.

Where this is the case, North Ayrshire has a clear process that supports the Team Around the Child (TAC) to make a recommendation for consideration of alternative provision. This is outlined in the Service Operating Procedure G11 and requires establishment staff to work with parents and carers to ensure all supports have been put in place for a child or young person in their mainstream context before submitting clear evidence requesting a placement assessment. North Ayrshire council staff will then make a recommendation based on the evaluation of this evidence, a review of the needs of the young person and the current peer group in each setting.

The Education (Disability Strategies and Pupils' Educational Records) (Scotland) Act, October 2002, requires local education authorities to prepare and implement accessibility strategies to improve, over time, access to education for young people with disabilities. Access covers:

- The physical building and grounds
- The curriculum (both formal and informal)
- Information on any educational planning that might affect the child or young person's education.

The Education (Additional Support for Learning) (Scotland) (2009) Act sets out certain duties on local education authorities and confers certain rights on children and their parents. These duties include the need to:

- Identify, assess, and address the need for additional support for any child or young person failing to benefit from school education, for whatever reason.
- Seek and take account of the views of the child or young person on issues relating to their education.
- Engage in helpful partnership working with parents/carers and staff from other agencies.

Additional Support for Learning

Any child who needs more or different support to what is normally provided in schools or pre-schools is said to have 'additional support needs'. This includes children who may need extra help with their education as a result of issues arising from social and emotional difficulties, bullying, physical disability, having English as an additional language, a sensory impairment or communication difficulty.

The Additional Support for Learning Act

The Education (Additional Support for Learning) (Scotland) Act 2004 came into force in November 2005. In June 2009, the Act was amended. These amendments form the Education (Additional Support for Learning) (Scotland) Act 2009 and came into force on November 2010.

Main provisions of the Act

- The Act provides the legal framework underpinning the system for supporting children and young people in their school education, and their families.
- This framework is based on the idea of additional support needs. This broad and inclusive term applies to children or young people who, for whatever reason, require additional support, long or short term, in order to help them make the most of their school education and to be included fully in their learning.
- The 2009 Act automatically deems that all looked after children and young people have additional support needs unless the education authority determine that they do not require additional support in order to benefit from school education.
- In addition, education authorities must consider whether each looked after child or young person for whose school education they are responsible requires a co-ordinated support plan.

Duties under the ‘Additional Support for Learning’ legislation

North Ayrshire must assess any pupil with additional support needs and provide with any support necessary for them to benefit fully from their education. All the evidence says that it is best to intervene early to prevent any difficulties developing and taking root. For example, by making sure reading is very well taught and that all pupil gets encouragement and support at home we can hopefully reduce later difficulties.

Whatever the type of challenge that arises, it is important to detect it early, develop a shared understanding of what is needed (the school may request extra specialised help to do this) and take action to help to pupil achieve. Whenever we start this process for any child or young person, we will always explain to them and to their parents/carers what our concerns are and what we will do to help.

The establishment can get support from a range of visiting professionals including educational psychologists. Each establishment has a link educational psychologist and staff can ask for informal advice on supporting learners. If more detailed individual help is required, they will talk to you about formally involving the educational psychologist. The educational psychologist can only be involved in consultation, collaborative assessment, and planning interventions for your child with your agreement.

Staged Intervention

A young person’s need for support is addressed through a cycle of identification, assessment, planning, support and review. This process is called Staged Intervention.

In North Ayrshire we organise support under the following headings:

- Enhanced Universal Support
- Stage 1
- Stage 2

Universal support is a fundamental element of the service provided by all educational establishments. There may be times when a child or young person needs some additional support to help them achieve their full potential and this is where the stages of support need to be identified and explained.

Enhanced Universal

Some supports are considered as **Enhanced Universal**, reflecting that they are provided within universal services but are planned and delivered with enhancement to day-to-day practice.

Within **Enhanced Universal** a young person may require a higher level of support due to concerns surrounding their wellbeing or learning, or a combination of both.

The needs of the child or young person are met within their classroom or playroom with some adjustment to their environment, curriculum, and/or approaches to learning and teaching. Some aspects of work may be planned individually or as part of a group however this will be recorded as part of playroom or classroom planning. Class teachers and keyworkers will monitor and record progress.

Stage 1

This stage applies to children and young people whose support needs cannot be met through Enhanced Universal services. They require additional support available within their own establishment which may include Support for Learning and/or targeted pastoral support.

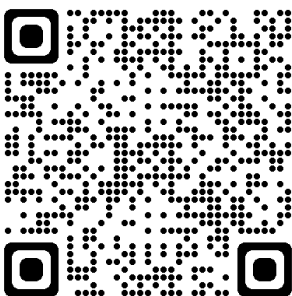
Stage 2

This stage signifies that the needs of the young person are significant and/or exceptional and are not being fully met through Enhanced Universal or Stage 1 supports and services. The young person requires more specialist and/or intensive support.

At both Stage 1 and 2, a Team Around the Child discussion will review the learner's strengths and needs, agreeing appropriate interventions and supports. The learner and their parent/carer must be fully involved in this process and the young person's targets and progress will be recorded using the North Ayrshire Staged Intervention planning format.

Where a child or young person has additional support needs, extra planning is required when they move to a new class, new school or when they are moving on from secondary school. How far ahead this transition planning needs to start depends on the young person's individual needs, but for most children and young people with Additional Support Needs transition planning should start at least one year before the date of the planned move.

Further advice and guidance around supporting needs can be found on the [ENQUIRE website](#).



Getting It Right for Every Child – Ensuring their Wellbeing

The Children and Young People (Scotland) Act lays out the statutory duties the public sector must adhere to, to support children and young people, through the implementation of GIRFEC. Education Services must safeguard, support and promote the wellbeing of all children and young people and address need at the earliest opportunity. These functions are the responsibility of schools and establishments and those who work in them and with them. All who work in Education Services and in partnership with Education Services have a responsibility to ensure the wellbeing of North Ayrshire's children and young people.

GIRFEC as a strengths-based approach seeks to realise children's rights on a day-to-day basis and is therefore underpinned by key values and principles:

- Placing the child or young person and their family at the heart, and promoting choice, with full participation in decisions that affect them;
- Working together with families to enable a rights-respecting, strengths-based, inclusive approach;
- Understanding wellbeing as being about all areas of life including family, community and society;
- Valuing difference and ensuring everyone is treated fairly;
- Considering and addressing inequalities;
- Providing support for children, young people and families when they need it, until things get better, to help them to reach their full potential; and
- Everyone working together in local areas and across Scotland to improve outcomes for children, young people and their families.

Based on these principles, GIRFEC is about enhancing the wellbeing of all children and young people as well as building a flexible scaffold of support: where it is needed, for as long as it is needed. This is delivered through the core components of:

- a **named person** who is a clear point of contact for children, young people and families to go to for support and advice. A named person can also connect families to a wider network of support and services so that they get the right help, at the right time, from the right people; (In our establishments this would usually be a Primary Head Teacher or in Secondary a Principal Teacher of Pupil Support (Pastoral))
- a **shared and holistic understanding of wellbeing** and a single model of how this can be considered and supported; and,
- a **single, shared and rights-based approach to planning** for children and young people's wellbeing where support across services is needed, co-ordinated by a **lead professional**.

The 'Getting it Right for Every Child' approach to supporting every child is a priority within our establishment and we aim to assist every child in our school to reach their potential. The approach uses eight indicators to describe wellbeing in which children and young people need to progress in order to do well now and in the future.

These are to be Safe, Healthy, Achieving, Nurtured, Active, Respected, Responsible and Included (SHANARRI)

Please see the [Scottish Government's Getting it right for every child policy for further information and supporting documentation.](#)

Psychological Services

The Educational Psychology Service in North Ayrshire is part of and contributes to the aims of Education Services by improving outcomes for children and young people. Educational Psychologists work together with teachers, parents and other professionals to help children and young people achieve their full potential, within educational settings and the wider community. Educational Psychologists are involved in working with individuals, but also have a significant role in offering training, support and consultation to increase capacity in education establishments on a wide range of issues. They are also involved in supporting research to evaluate how effective approaches to support children and young people are.

Your child's school/ Early Years Centre already has a system of staged intervention for identifying, assessing, monitoring and reviewing the ongoing progress of all children and young people. As part of this wider system of support, each school and authority early years centre has a link educational psychologist.

When concerns arise about a particular child or young person the establishment will take action to address these concerns. If the concerns continue, school/ early years may have an informal discussion with the educational psychologist and ask about general advice.

If needed, a formal consultation meeting with parents/carers involving the educational psychologist can then be arranged. This will be discussed with you beforehand. This may be a one off or may lead to longer term involvement. Through this process the educational psychologist can, if required, contribute to the ongoing assessment and support for your child including providing support to the family. The educational psychologist will be involved while there is a specific role for them and will use a strengths based, solution oriented approach which takes into account the wider context of the child, family and community.

Find out more at on the webpage for [North Ayrshire Council's Psychological Service](#).

Data Protection

Personal data is required to be collected by North Ayrshire Council in order to deliver education services. It is necessary to collect personal data regarding pupils, parents, carers and other individuals to enable us to carry out our duties under the Education (Scotland) Act 1980 and the Education (Scotland) Act 2016.

The Data Protection Act 2018/UK GDPR sets out the legal bases for processing personal data. You can refer to our [privacy notice](#) for details of the different bases under which we may process individuals' data.

We may also share or receive an individual's personal data with the following:

- Scottish Government & Education Scotland
- Private Nurseries'
- Strathclyde Passenger Transport
- Scottish Children's Reporter Administration
- Social Work Services
- Scottish Public Services Ombudsman

Where necessary and proportionate, we will also make disclosures required by law and may also share information with other bodies responsible for detecting/preventing fraud or

auditing/administering public funds. Individuals' have legal rights under the data protection legislation including the right of access. Further details can be found in the Council's [Privacy Policy](#).

Medical and Health Care

Medical examinations are carried out at various times during a child's primary school years. Parents are given notice of these and encouraged to attend. Vision and hearing tests and dental examinations, which parents need not attend, are also carried out and parents informed of any recommended action or treatment. All examinations are carried out by Ayrshire and Arran Health Board staff.

If a pupil takes ill or has an accident at school, which requires that the child be sent home or for treatment, First Aid will be provided and parents or carers contacted immediately. (In the event of a serious illness or accident, a member of staff will accompany the child to a doctor or hospital and parents/ carers will be notified immediately.)

For this reason, it is important that the school has contact details for parents/ carers and an additional contact person in case parents/ carers cannot be reached. It is also important that the school is kept fully informed and updated with regards to any medical condition.

It is the parent's responsibility to notify the school and keep medical information updated as required.

Children will not be sent home unaccompanied.

Section 8: Parental Involvement

Parental Engagement and Involvement

[NAC Parental Involvement Strategy](#)

All schools have clear systems in place for communicating with everyone in the parent forum. Communications with parents are clear, jargon-free, specific and easily accessible. A variety of methods and approaches are used by schools to communicate with the parent forum including face to face, traditional communication methods and digital media e.g. Twitter, Facebook. Considerations will always be given when communicating with parents who have literacy, language and communication challenges.

Schools ensure that parents know who to contact when they wish to discuss their child's learning or wellbeing and will seek to provide a private space for such discussions and make sure parents are given adequate time and support. Consideration will be given to family circumstances.

Parents are welcome to contact the school at any time to arrange an appointment to discuss any matter with the class teacher, Depute Head, Head Teacher or Head of Centre. New families are welcome to contact the school and request a suitable visiting time at any point throughout the session

Parents are given opportunities to understand the way learning and teaching takes place in the classroom. This may be in the form of class visits to take part in the learning experience alongside their child or attending events which share the learning. Frequent invitations are issued to parents to participate in school activities such as open days, class assemblies, workshops and to assist with outings and visits, sports and concerts. There will be a series of early meetings for the parents of Primary 1 pupils and parents are kept informed of events with a range of newsletters, website updates, texts, invitations and social media sites.

A variety of methods will be used to ensure information about your child's progress is shared. Schools are encouraged to provide parents/carers with information on their children's progress at regular intervals throughout the year through a range of activities. There is an expectation that part of this will be in a written format.

Reporting Examples:

Individual Learners	Groups of learners
Written reports/ tracking reports	Assemblies
Learning conversations with pupil/ teacher/ parent/ carer	Open day events
Pupil reflections on their learning in logs	School concerts/shows
Parent/ carer consultation/ Parents' Meetings involving parent/ teacher/ pupil, as appropriate	Social media
Home/ school diaries	Curriculum workshops led by children and young people and staff
Profiling activities	Parent Council meetings
Learning walls and displays	School / class newsletters

Beith Parent Council

The Scottish Government has passed a law called the Scottish Schools (Parental Involvement) Act 2006 to encourage and support more parents to become involved in their child's education. The main aims of the Act are to:

- Help parents become more involved in their child's education and learning
- Welcome parents as active participants in the life of the school
- Provide easier ways for parents to express their views and wishes.

To help achieve these aims, all parents are automatically members of the Parent Forum at their child's school and are entitled to have a say in selecting the Parent Council (the representative body) to work on behalf of all parents at the school



The objectives of the Parent Council are:

- To work in partnership with staff to create a welcoming school which is inclusive for all parents.
- To promote partnership between the school, its pupils and all its parents.
- To develop and engage in activities which support the education and welfare of the pupils.
- To identify and represent the views of parents on the education provided by the school and other matters affecting the education and welfare of pupils.
- To be involved in the recruitment process for appointing the Head Teacher and Depute Head Teacher of the school.

The members of the Parent Council are:

Chairperson – Catherine Thom

Secretary – Amanda Doherty

Treasurer – Anna Sutherland

Members – Lisa Davenport, Avril Leith,

Contact details – beithparentcouncil@gmail.com

The Parent Council also have a Facebook Page where you can receive updates and information about the school www.facebook.com/BeithPrimarySchoolParentCouncil

Any parent or carer of a child at the school can volunteer to be a member of the Parent Council. The Head Teacher is the professional adviser to the Parent Council and has the right to attend and speak at Parent Council or Parent Forum meetings.



Parentzone Scotland is a unique website for parents and carers in Scotland, from early years to beyond school. The website provides up-to-date information about learning in Scotland, and practical advice and ideas to support children's learning at home in literacy, numeracy, health and wellbeing and science.

Information is also available on Parentzone Scotland regarding additional support needs, how parents can get involved in their child's school and education. Furthermore, the website has details about schools including performance data for school leavers from S4-S6; and links to the national, and local authority and school level data on the achievement of Curriculum for Excellence levels.

Parentzone Scotland can be accessed at <https://education.gov.scot/parentzone>

Other useful sites include:

[Parentclub Scotland](https://www.parentclub.scot/) has a range of advice and guidance to support the highs and lows of parenting. For example they have pages dedicated to Mental Health and Wellbeing Support, Online Behaviour and Support along with a number of other hot topics.

<https://www.parentclub.scot/>

They have also developed an extensive set of resources to support parents and carers where school attendance has become a concern. [https://www.parentclub.scot/topics/school-education?age=Older%20child%20\(8-11\)#school_attendance](https://www.parentclub.scot/topics/school-education?age=Older%20child%20(8-11)#school_attendance)

Section 9: Pupil Data Collection and Protection Policies

The Scottish Government and its partners collect and use information about pupils through the *Pupil Census* to help to improve education across Scotland. This note explains why we need this information, how we use it and what we do to protect the information supplied to us.

Why do we need your data?

In order to make the best decisions about how to improve our education service, Scottish Government, education authorities and other partners such as the SQA and Skills Development Scotland need accurate, up-to-date data about our pupils. We are keen to help all our pupils do well in all aspects of school life and achieve better examination results. Accurate and up-to-date data allows us to:

- plan and deliver better policies for the benefit of all pupils
- plan and deliver better policies for the benefit of specific groups of pupils
- better understand some of the factors which influence pupil attainment and achievement
- plan and implement targeted approaches to reducing the poverty-related attainment gap
- share good practice
- conduct teacher workforce planning
- target resources better
- enhance the quality of research to improve the lives of young people in Scotland
- provide a window on society, the economy and on the work and performance of government through relevant statistics:
 - [Collections - gov.scot](https://www.gov.scot/collections/)
 and, in particular

[School education statistics - gov.scot](https://www.gov.scot/school-education-statistics/)

Data Policy

Information about pupils' education is collected through our statistical surveys in partnership between the Scottish Government and Local Authorities through the ScotXed Programme which aims to help schools and Local Authorities by supporting efficient collection, processing, and dissemination of statistical information. The Scottish Government then provides analysis of the data to support research, planning, management and monitoring of education services as well as to produce National Statistics publications.

Education data within Scottish Government is managed effectively by secure systems on secure servers and is exploited as a valuable corporate resource, subject to confidentiality restraints. As part of its data policy, Scottish Government will not publish or make publicly available any information that allows individual pupils to be identified, nor will data be used by Scottish Government to take any actions in respect of individuals. Data is held securely and no information on individual pupils can or would be made publicly available by Scottish Government.

The individual data collected by Scottish Government through the Pupil Census is used for statistical and research purposes only.

Your data protection rights

Any sharing or linkage of data will be done under the strict control of Scottish Government, and will be consistent with their data policy and the [National Data Linkage Guiding Principles](#). Decisions on the sharing or linkage of data will be taken in consultation with relevant colleagues and individuals within and out with Scottish Government as part of a Data Access Panel. At all

times the rights of the individual (children or adults) under the GDPR and other relevant legislation will be ensured. Further information can be found on the [Scottish Government's Scottish Exchange of Data page](#).

Concerns

If you have any concerns about the ScotXed data collections you can email the Data Protection & Information Assets Team on dpa@gov.scot or the Head of Education Analytical Services, Mick Wilson, at mick.wilson@gov.scot or by writing to Education Analytical Services, Area 2A-North, Victoria Quay, Leith, EH6 6QQ. Alternative versions of this page are available, on request from the ScotXed Support Office, in other languages, audio tape, Braille and large print.

Alternatively complaints may be raised with the Information Commissioners Office at casework@ico.org.uk.

Important Contacts**Executive Director (Education)**

Sam Anson
North Ayrshire Council
Cunninghame House
IRVINE
KA12 8EE
01294 324414

Chief Education Officer

Andrew McClelland
North Ayrshire Council
Cunninghame House
IRVINE
KA12 8EE
01294 324416

Executive Manager

Lindsay Morris
North Ayrshire Council
Cunninghame House
IRVINE
KA12 8EE
01294 324413