



S1 and S2 students follow a curriculum based on Level 3 E's and O's as outlined in the document below.

<https://education.gov.scot/improvement/Documents/SciencesBenchmarksPDF.pdf>

### Wider Achievement.

In S2, students complete a Unit of work entitled *Mission Starlight*.

On successful completion of this unit of work, students can be presented for a Bronze CREST award, and certification gained.

### S1 Curriculum

Students cover the following units of work on a rotational basis over the course of S1.

Cell Biology

Matter & Solution

Heat

Climate Change and Renewable Energy

Body Systems

Elements, compounds & mixtures

Waves

### S2 Curriculum.

Students cover the following units of work on a rotational basis over the course of S2.

Inheritance

Biodiversity & Interdependence

Chemical Changes

Acids & Bases

Electricity

Forces

### Assessment Procedures.

For each Unit of work students complete an assessment designed to test their understanding of the core theory of each E&O.

They also complete a skills assessment, developing their understanding and confidence in addressing the skill required for the completion of the National and Higher assignments.

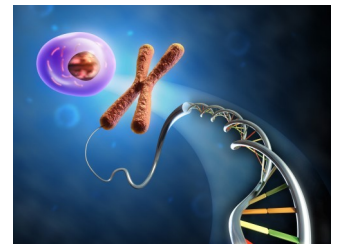
### Reporting

Interim reporting is based on performance in ongoing unit assessments.

Our final report at the end of their academic year is based on assessment information gained from the completion of S1/S2 exam.

S1 exam assesses the units of Cell Biology, Matter & Solution and Heat

S2 exam assesses the units of Inheritance, Chemical Changes and Electricity.



S3 students follow a curriculum based on Level 4 E's and O's as outlined in the document below.

<https://education.gov.scot/improvement/Documents/SciencesBenchmarksPDF.pdf>

### S3 Assessment

Students are assessed at interim stages of the course, covering Level assessment criteria as well as receiving challenge Level 5 questions.

As part of the S3 course, students also complete an Added Value Unit (in line with National 4 assessment criteria)

### National Curriculum

S4 students begin their National courses in May, receiving 4 periods per week.

S5/6 students begin their National courses in June, receiving 6 periods per week of teaching.

[https://www.sqa.org.uk/files/nq/CfE\\_CourseSpec\\_N4\\_Sciences\\_Biology.pdf](https://www.sqa.org.uk/files/nq/CfE_CourseSpec_N4_Sciences_Biology.pdf)

[https://www.sqa.org.uk/files\\_ccc/N5CourseSpecBiology.pdf](https://www.sqa.org.uk/files_ccc/N5CourseSpecBiology.pdf)

The core units of work are delivered as follows;

Multicellular Organisms

Cell Biology

Assignment

Life on Earth

### Higher Human Biology

Offered to S5/6 students, beginning the course in June and receiving 6 periods of teaching per week.

[https://www.sqa.org.uk/files\\_ccc/HigherCourseSpecHumanBiology.pdf](https://www.sqa.org.uk/files_ccc/HigherCourseSpecHumanBiology.pdf)

The core units of work are delivered as follows;

Human Cells

Physiology & Health

Assignment

Neurobiology & Communication

### Assessment Procedures.

For National and Higher courses, students receive interim level C progress assessments and end of unit graded assessments.

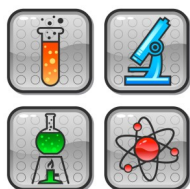
Prelims are completed in the winter diet, assessing 2 full units of work.

### Reporting

Interim reporting is based on performance in ongoing interim and full unit assessments.

Our final report at the end of their academic year is based on student attainment in their prelim.

Estimates submitted to SQA are based on prelim attainment.



S3 students follow a curriculum based on Level 4 E's and O's as outlined in the document below.

<https://education.gov.scot/improvement/Documents/SciencesBenchmarksPDF.pdf>

### S3 Assessment

Students are assessed at interim stages of the course, covering Level assessment criteria as well as receiving challenge Level 5 questions.

As part of the S3 course, students also complete an Added Value Unit (in line with National 4 assessment criteria)

### National Curriculum

S4 students begin their National courses in May, receiving 4 periods per week.

S5/6 students begin their National courses in June, receiving 6 periods per week of teaching.

[https://www.sqa.org.uk/files\\_ccc/CfE\\_CourseSpec\\_N4\\_Sciences\\_Chemistry.pdf](https://www.sqa.org.uk/files_ccc/CfE_CourseSpec_N4_Sciences_Chemistry.pdf)

[https://www.sqa.org.uk/files\\_ccc/N5CourseSpecChemistry.pdf](https://www.sqa.org.uk/files_ccc/N5CourseSpecChemistry.pdf)

The core units of work are delivered as follows;

Chemical Changes and Structure

Nature's Chemistry

Assignment

Chemistry In Society

### Higher Chemistry

Offered to S5/6 students, beginning the course in June and receiving 6 periods of teaching per week.

[https://www.sqa.org.uk/files\\_ccc/HigherCourseSpecChemistry.pdf](https://www.sqa.org.uk/files_ccc/HigherCourseSpecChemistry.pdf)

The core units of work are delivered as follows;

Chemical Changes and Structure

Nature's Chemistry

Assignment

Chemistry in Society

Chemical Analysis

### Assessment Procedures.

For National and Higher courses, students receive interim level C progress assessments and end of unit graded assessments.

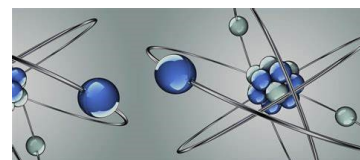
Prelims are completed in the winter diet, assessing 2 full units of work.

### Reporting

Interim reporting is based on performance in ongoing interim and full unit assessments.

Our final report at the end of their academic year is based on student attainment in their prelim.

Estimates submitted to SQA are based on prelim attainment.



S3 students follow a curriculum based on Level 4 E's and O's as outlined in the document below.

<https://education.gov.scot/improvement/Documents/SciencesBenchmarksPDF.pdf>

### S3 Assessment

Students are assessed at interim stages of the course, covering Level assessment criteria as well as receiving challenge Level 5 questions.

As part of the S3 course, students also complete an Added Value Unit (in line with National 4 assessment criteria)

### National Curriculum

S4 students begin their National courses in May, receiving 4 periods per week.

S5/6 students begin their National courses in June, receiving 6 periods per week of teaching.

[https://www.sqa.org.uk/files/nq/CfE\\_CourseSpec\\_N4\\_Sciences\\_Physics.pdf](https://www.sqa.org.uk/files/nq/CfE_CourseSpec_N4_Sciences_Physics.pdf)

[https://www.sqa.org.uk/files\\_ccc/N5CourseSpecPhysics.pdf](https://www.sqa.org.uk/files_ccc/N5CourseSpecPhysics.pdf)

The core units of work are delivered as follows;

Electricity and Energy

Dynamics and Space

Assignment

Waves and Radiation

### Higher Physics

Offered to S5/6 students, beginning the course in June and receiving 6 periods of teaching per week.

[https://www.sqa.org.uk/files\\_ccc/HigherCourseSpecPhysics.pdf](https://www.sqa.org.uk/files_ccc/HigherCourseSpecPhysics.pdf)

The core units of work are delivered as follows;

Electricity

Our Dynamic Universe

Assignment

Particles and Waves

### Assessment Procedures.

For National and Higher courses, students receive interim level C progress assessments and end of unit graded assessments.

Prelims are completed in the winter diet, assessing 2 full units of work.

### Reporting

Interim reporting is based on performance in ongoing interim and full unit assessments.

Our final report at the end of their academic year is based on student attainment in their prelim.

Estimates submitted to SQA are based on prelim attainment.