

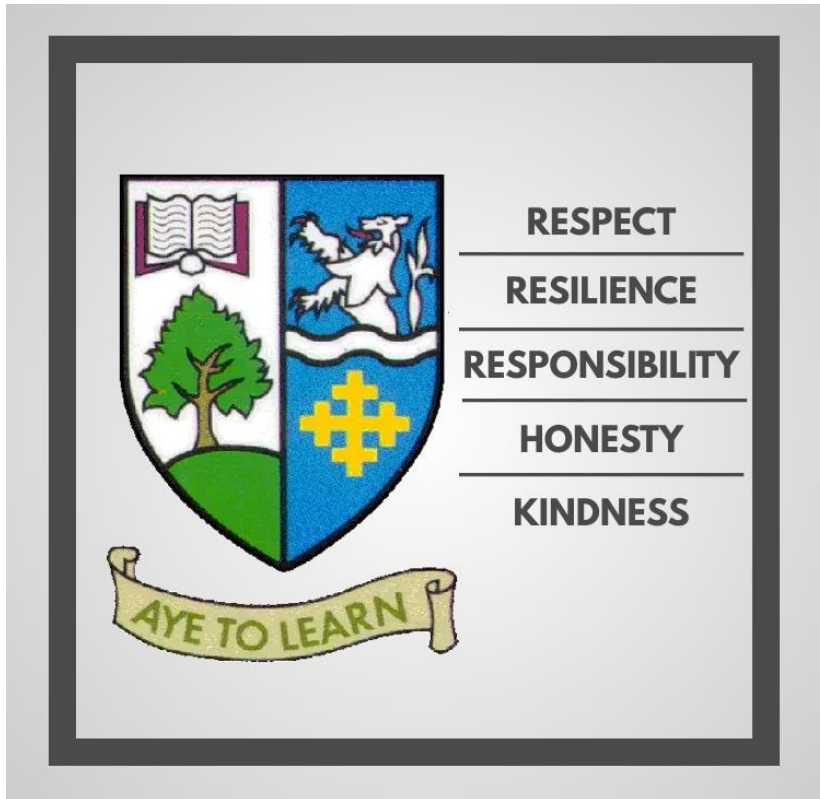
RESPECT

RESILIENCE

RESPONSIBILITY

HONESTY

KINDNESS



# Interventions

## A Community Approach

Katy Hegarty – Headteacher

Phillippa MacDougall – Depute Head Teacher

Kirsty Dobbie – PT Inclusion

Joanne Fulton - PT Inclusion



**GREENWOOD ACADEMY**

OFFICIAL SENSITIVE

CONFIDENT INDIVIDUALS  
SUCCESSFUL LEARNERS  
RESPONSIBLE CITIZENS  
EFFECTIVE CONTRIBUTORS

RESPECT

RESILIENCE

RESPONSIBILITY

HONESTY

KINDNESS

Name	Yeargroup	Status	Previous Attendance	Aug 23 Attendance	Background Information	Current Supports Offered
	S4	Low Attendance Concern	53.30%	37%	Low Attendance Concern	School Supports
	S4	Low Attendance Concern	50.81%	8%	Low Attendance Concern	YST
	S4	Low Attendance Concern	62.91%	4%	Major issues with peers in community	Home Tuition
	S4	Low Attendance Concern	50.27%	12%	Possible trauma/does not like school	Reduced Timetable
	S4	Low Attendance Concern	74.73%	37%	Family trauma	Close monitoring/contact with home
	S4	Not attending		0%		
	S4	Attending After School	59.89%	0%	Anxiety/Mental health issues	YST/Work exp/After school from Oct
	S4	Not attending	0.55%	0%	Anxiety.	CAMHS
	S4	Low Attendance Concern	82.42%	41%	Anxiety.	
	S4	Not attending	32.14%	0%	outreach	Outreach
	S4	Low Attendance Concern	72.53%	50%	Low attendance concern	Attending some classes
	S4	Low Attendance Concern	59.62%	45%	STR support	STR support
	S4	Significant Truancy	81.87%	90%	Supportive home life/struggles to engag	Full Timetable at present
	S4	Low Attendance Concern		58%	Referred to Inclusion group for outreach	Outreach
	S4	Not attending	73.63%	0%	Referred Inclusion for home tuition	Outreach
	S4	Not attending	34.07%	0%		Tuition services & transition worker.
	S4	Low Attendance Concern	21.15%	16%	non attendance/family issues	Townend
	S4	Not attending	43.13%	0%	Anxiety.	Regular support phone calls
	S4	Attending After School	33.52%	0%	Social Work withdrawn.	Working after school
	S4	Not attending	78.85%	0%	Mental health concerns.	Meeting arranged/Townend offered
	S4	Significant Truancy		79%	Difficult behaviours/avoidance in schoo	YST
	S4	Not attending	46.98%	0%	Social issues. May respond to support.	YST
	S4	Reduced Timetable	95.88%	29%	Health issues/Anxiety/leaving June 24	Working on Nat 4 Writing at home.
	S4	Not attending	94.51%	0%	Not attending since S2.	Has had some home tuition.
	S4	Significant Truancy		75%	No apparent reasons for truancy	Monitoring
	S4	Not attending	75.55%	0%	Family and wider social issues	Calvin has had re-engagement meeting
	S4	Not attending	73.08%	40%	Difficult behaviours/lack of engagement	CAHMS
	S4	Not attending	100%	100%	See Carol Doig for info	Multi-agency support
	S4	Not attending	50.00%	0%	Possibly going to St Mats	YP support team ( Mal)
	S4	Not attending	100%	100%	Currently attending Outreach	Outreach
	S4	Low Attendance Concern	65.38%	40%	Occasional truancy	In school supports
	S4			64.00%	Difficulties with peers/anxiety	Fire service mentoring programme
	S4	Low Attendance Concern	79.12%	50%	Low attendance concern	Monitoring
	S5	Not attending	21.43%	0%	Low attendance concern	Monitoring
	S5	Low Attendance Concern	81.74%	25%	Will leave in January	College Placement
	S5	Not attending	84.34%	0%	Likely to leave.	College Placement
	S5	Not attending	100%	0%	On school roll to access college course.	College Placement
	S5	Not attending	0%	0%	Leavers form to be signed	Job placement
	S5	Not attending	78.85%	0%	Accommodated at st Phillips	Social Work/External Placement
	S5	Low Attendance Concern	58.24%	8%	Referred to Reporter.	Rosemount
	S5	Low Attendance Concern	79.95%	29%	Low attendance concern	In school supports

## Initial Numbers (84)

S2 - 14

S3 - 21

S4 - 33

S5 - 9

(Leavers - 7)

## Key Information

Attendance

Status

Background Information

External Partners

Current Intervention



# GREENWOOD ACADEMY

OFFICIAL SENSITIVE

CONFIDENT INDIVIDUALS  
SUCCESSFUL LEARNERS  
RESPONSIBLE CITIZENS  
EFFECTIVE CONTRIBUTORS

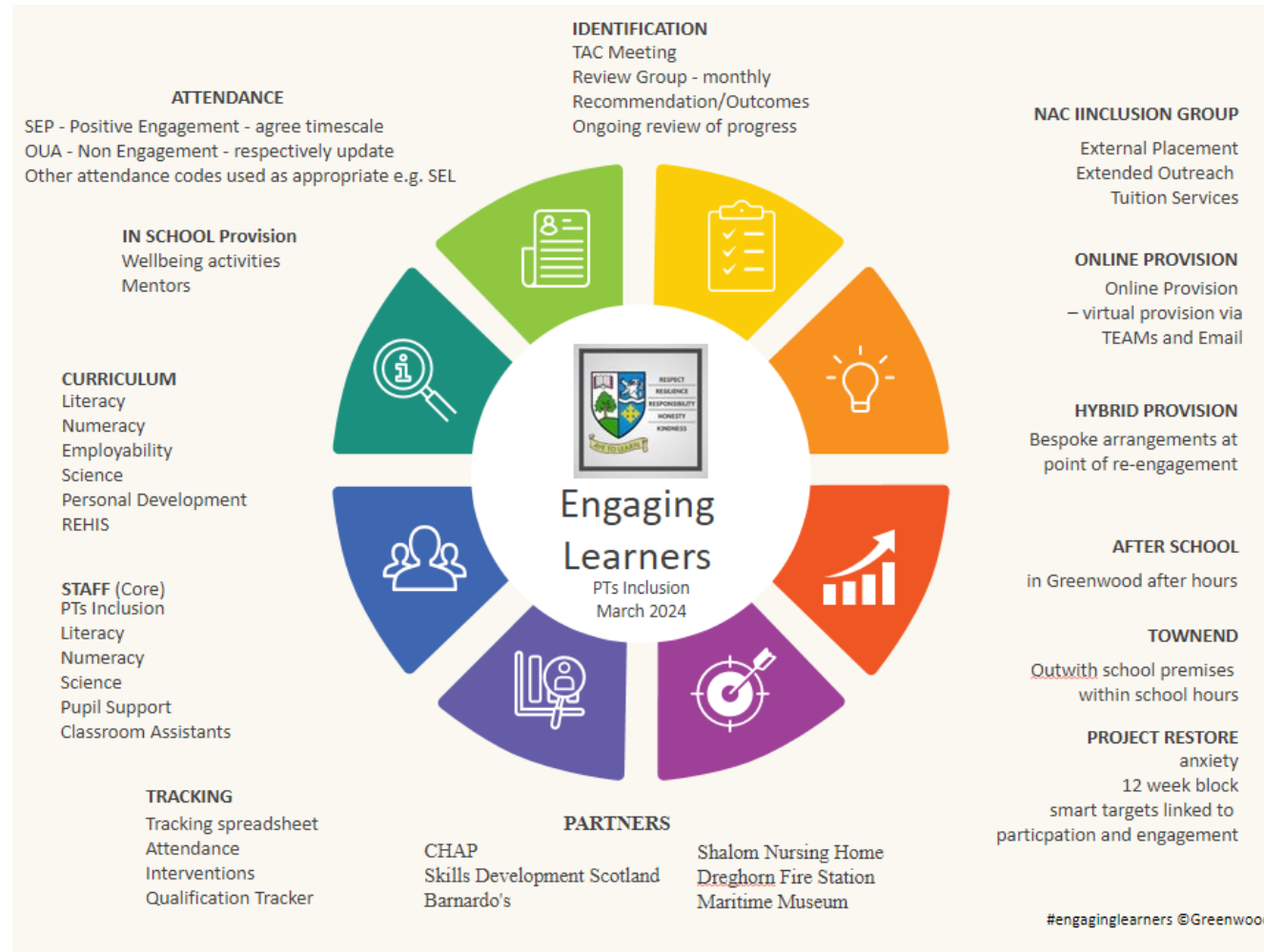
RESPECT

RESILIENCE

RESPONSIBILITY

HONESTY

KINDNESS



**GREENWOOD ACADEMY**

OFFICIAL SENSITIVE

**CONFIDENT INDIVIDUALS  
SUCCESSFUL LEARNERS  
RESPONSIBLE CITIZENS  
EFFECTIVE CONTRIBUTORS**

# Interventions

	MONDAY	TUESDAY	WEDNESDAY	THURSDAY	FRIDAY
Mid Morning			Townend - S3/4	Townend - S3/4 Townend - S2	
Afternoon	In School Wellbeing Music	DYW Barista Project Restore 1 to 1 Session Volunteering - SHALOM	Townend - S3/4/5 Project Restore 1 to 1 Session	Townend - S3/4 In School Wellbeing Mindfulness DYW Community Cafe Project Restore 1 to 1 Session	Project Restore 1 to 1 Session
After School			In School Session S3/4	In School Session S3/4	





RESPECT

RESILIENCE

RESPONSIBILITY

HONESTY

KINDNESS

ENGAGING  
LEARNERS

# GREENWOOD ACADEMY



<p><b>TUITION SERVICES</b></p> <ul style="list-style-type: none"> <li>• Pupil 1 S4</li> <li>• Pupil 2 * S4</li> <li>• Pupil 3 S4</li> <li>• Pupil 4 * S4</li> <li>• Pupil 5 S4</li> <li>• Pupil 6 S4</li> </ul> <p>* Transition Worker</p>	<p><b>ONLINE PROVISION</b></p> <ul style="list-style-type: none"> <li>• Pupil 1 S4</li> <li>• Pupil 2 S3</li> <li>• Pupil 3 S3</li> <li>• Pupil 4 S2</li> <li>• Pupil 5 S2</li> <li>• Pupil 6 S2</li> </ul>	<p><b>AFTER SCHOOL PROVISION</b></p> <ul style="list-style-type: none"> <li>• Pupil 1 S4</li> <li>• Pupil 2 S4</li> <li>• Pupil 3 S4</li> <li>• Pupil 4 S4</li> <li>• Pupil 5 S3</li> <li>• Pupil 6 S3</li> </ul>	<p><b>HYBRID PROVISION</b></p> <ul style="list-style-type: none"> <li>• Pupil 1 S4 *STR</li> <li>• Pupil 2 S2</li> <li>• Pupil 3 S2</li> <li>• Pupil 4 S3</li> </ul>	<p><b>TOWNEND PROVISION</b></p> <ul style="list-style-type: none"> <li>• Pupil 1 S4</li> <li>• Pupil 2 S4</li> <li>• Pupil 3 S4</li> <li>• Pupil 4 S4</li> <li>• Pupil 5 S4</li> <li>• Pupil 6 S4</li> <li>• Pupil 7 S4</li> <li>• Pupil 8 S4</li> <li>• Pupil 9 S4</li> <li>• Pupil 10 S4</li> <li>• Pupil 11 S4</li> <li>• Pupil 12 S4*</li> <li>• Pupil 13 S4*</li> <li>• Pupil 4 S4*</li> </ul>	<p><b>TOWNEND PROVISION</b></p> <ul style="list-style-type: none"> <li>• Pupil 1 S3</li> <li>• Pupil 2 S3</li> <li>• Pupil 3 S3 *</li> <li>• Pupil 4 S3 *</li> <li>• Pupil 5 S3 *</li> <li>• Pupil 1 S5</li> <li>• Pupil 2 S5</li> <li>• Pupil 3 S5</li> </ul> <p>* New Referral</p>
<p><b>EXTENDED OUTREACH</b></p> <ul style="list-style-type: none"> <li>• Pupil 1 S3</li> <li>• Pupil 2 S4</li> <li>• Pupil 3 S4</li> <li>• Pupil 4 S4</li> <li>• Pupil 5 S4</li> </ul>	<p><b>EXTERNAL PLACEMENT</b></p> <ul style="list-style-type: none"> <li>• Pupil 1 S2</li> <li>• Pupil 2 S2</li> <li>• Pupil 3 S3</li> </ul>	<p><b>PROJECT RESTORE</b></p> <ul style="list-style-type: none"> <li>• Pupil 1 S2</li> <li>• Pupil 2 S3</li> <li>• Pupil 3 S3</li> <li>• Pupil 4 S3</li> <li>• Pupil 5 S4</li> </ul>			

#engaginglearners ©Greenwood



# GREENWOOD ACADEMY

OFFICIAL SENSITIVE

CONFIDENT INDIVIDUALS  
SUCCESSFUL LEARNERS  
RESPONSIBLE CITIZENS  
EFFECTIVE CONTRIBUTORS

**RESPECT****RESILIENCE****RESPONSIBILITY****HONESTY****KINDNESS**

Actions Term 1 2023	Oct 23 Attendance2	Actions Term 2 2023	Dec 23 Attendance
After School Provision	84%	After School Provision	78%
In School	69%	In School	71%
In School	47%	In School	43%
In School	28%	In School	18%
STR	51%	STR	42%
In School	45%	In School	55%
In School	68%	Online Provision	79%
STR	53%	STR	59%
Project Restore	55%	Project Restore	54%
In School	84%	In School	88%
After School Provision	46%	After School Provision	63%
In School	93%	In School	95%
In School	49%	In School	48%
Outreach Provision	0%	Townend Provision	38%
In School	38%	In School	46%
Townend Provision	20%	Townend Provision	73%
Home Tuition	1%	Home Tuition	33%
Townend Provision	30%	Townend Provision	35%
In School	62%	In School	68%
Townend Provision	59%	Townend Provision	67%
After School Provision	25%	After School Provision	53%
Online Provision	0%	Online Provision	1%
Project Restore	60%	Project Restore	50%
Outreach Provision	100%	Outreach Provision	100%
In School	75%	In School	76%
In School	94%	In School	86%
Outreach Provision	86%	Outreach Provision	93%
Outreach Provision	100%	Home Tuition	100%
Outreach Provision	100%	Outreach Provision	100%

## Monitoring & Tracking

- Tracking attendance
- Tracking attainment
- Review of provision
- TAC meetings



# GREENWOOD ACADEMY

OFFICIAL SENSITIVE

**CONFIDENT INDIVIDUALS  
SUCCESSFUL LEARNERS  
RESPONSIBLE CITIZENS  
EFFECTIVE CONTRIBUTORS**

# RESPECT

# RESILIENCE

# RESPONSIBILITY

# HONESTY

# KINDNESS

NAT 3 APPS		NAT 4 APPS		NAT 5 UNITS		NAT 3 ENG					NAT 4 ENG					NAT 3 BIO					NAT 4 BIO					NAT 3 MOD			NAT 4 MOD				NAT 3 EMP				NAT 4 EMP				SDS	Post-16
NUMERACY	MONEY	SHAPE	NUMERACY	FINANCE	GEOMETRY	AVU	NUMERACY	READING	WRITING	LITERACY	READING	WRITING	LITERACY	AVU	LITERACY	CELL B	MULTI O	LIFE O	CELL B	MULTI O	LIFE O	AVU	DEMOC	SOCIAL	INT	FIRST	BUILD	RESP	DEAL	Appointment	Pathway											
H225 73	HV7Y 73	HV80 73	H225 74	HV7V 74	HV7W 74	HV7X 74	H225 75	H2WT 73	H2WV 73	H23W 73	H23H 74	H23T 74	H23W 74	H23Y 74	H23W 75	H207 73	H208 73	H209 74	H207 74	H208 74	H209 74	H20A 74	H23C 73	H23F 73	H23G 73	F786 10	F787 10	F788 10	F789 10	YES												
																																YES										
																																YES										
																																YES										
																																NO										
																																YES										
																																YES										
																																YES										
																																NO										
																																YES										
																																NO										
																																NO										
																																NO										
																																YES										
																																NO										
																																YES										
																																YES										
																																YES										



# GREENWOOD ACADEMY

OFFICIAL SENSITIVE

**CONFIDENT INDIVIDUALS  
SUCCESSFUL LEARNERS  
RESPONSIBLE CITIZENS  
EFFECTIVE CONTRIBUTORS**



GREENWOOD ACADEMY – STR/Enhanced Provision Review Group  
Session 2023/2024

December @ 11.45am

Staff
P MacDougall
F Wylie
K Dobbie
C Moore

Pupil Recommendations
Pupil 1 5W
Pupil 2 4W1
Pupil 3 3W1
Pupil 4 3B2
Pupil 5 3P1 *
Pupil 6 2M2
Pupil 7 2O1
Pupil 8 2A2
Pupil 9 2W2
Pupil 10 2M1
Pupil 11 2G1 *
Pupil 12 1M1
Pupil 13 1M1

~ Project Restore

\* Amendment to provision



GREENWOOD ACADEMY – STR/Enhanced Provision Review Group  
Session 2023/2024

February 2024

Pupil Recommendations	Outcome	Key Teacher
Pupil 1 S4	Project Restore	K Dobbie
Pupil 2 S3	Enhanced Support - Townend	J Fulton
Pupil 3 S3	STR Provision	J Fulton
Pupil 4 S3	Project Restore	K Dobbie
Pupil 5 S2	STR Provision	A Duncan
Pupil 6 S2	Project Restore – Waiting List	-
Pupil 7 S1	STR Provision	F Wylie
Pupil 8 S1	STR Provision	F Wylie





RESPECT

RESILIENCE

RESPONSIBILITY

HONESTY

KINDNESS



**GREENWOOD ACADEMY**

OFFICIAL SENSITIVE

CONFIDENT INDIVIDUALS  
 SUCCESSFUL LEARNERS  
 RESPONSIBLE CITIZENS  
 EFFECTIVE CONTRIBUTORS

RESPECT

RESILIENCE

RESPONSIBILITY

HONESTY

KINDNESS



X finds Townend easier to manage than the crowds of school.

I enjoy seeing my friends again.



I'm delighted that my son has achieved Nat 4 Biology.

The quiet and calmness of Townend has reassured X and given him the confidence to attend.



My son hasn't been to school for over 2 years. Attending Townend has helped to build his confidence.

X has settled in to engaging with Maths and English.



**GREENWOOD ACADEMY**

OFFICIAL SENSITIVE

**CONFIDENT INDIVIDUALS  
SUCCESSFUL LEARNERS  
RESPONSIBLE CITIZENS  
EFFECTIVE CONTRIBUTORS**

**RESPECT**

**RESILIENCE**

**RESPONSIBILITY**

**HONESTY**

**KINDNESS**

CURRICULUM  
PLANNING

ENVIRONMENT

PARENTAL  
ENGAGEMENT

CHALLENGES



INVESTMENT  
FOR IMPACT

STAFFING

POSITIVE  
DESTINATIONS



**GREENWOOD ACADEMY**

OFFICIAL SENSITIVE

**CONFIDENT INDIVIDUALS  
SUCCESSFUL LEARNERS  
RESPONSIBLE CITIZENS  
EFFECTIVE CONTRIBUTORS**





Nexts steps for Improvement



Sustainable Model



Curriculum Development



Impact Data



Project Restore CLPL



Parental Engagement





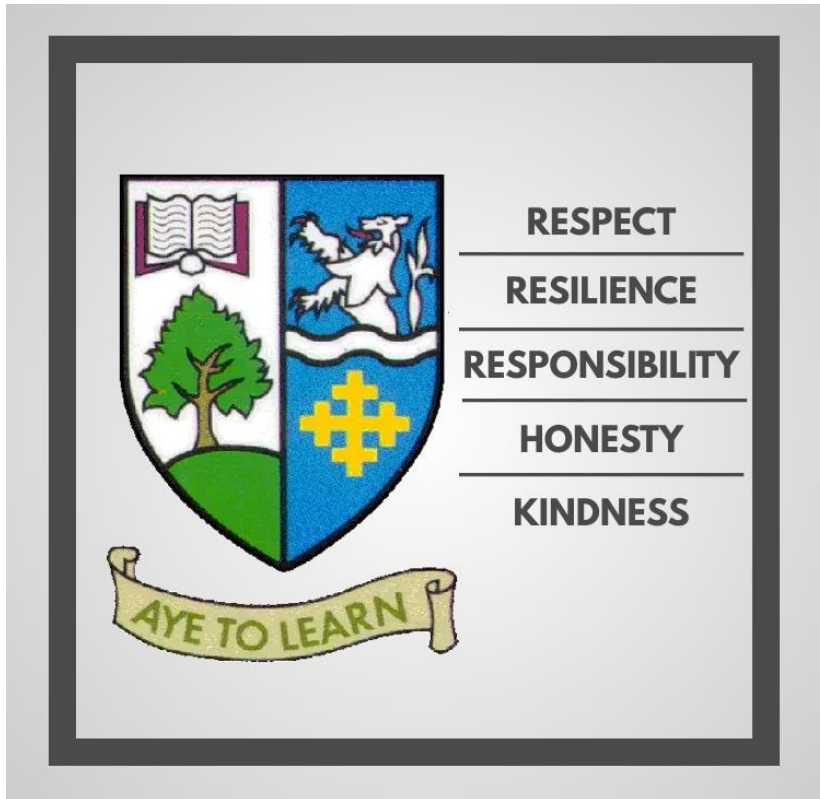
RESPECT

RESILIENCE

RESPONSIBILITY

HONESTY

KINDNESS



# Interventions

## A Community Approach

Katy Hegarty – Headteacher

Phillippa MacDougall – Depute Head Teacher

Kirsty Dobbie – PT Inclusion

Joanne Fulton - PT Inclusion



**GREENWOOD ACADEMY**

OFFICIAL SENSITIVE

CONFIDENT INDIVIDUALS  
SUCCESSFUL LEARNERS  
RESPONSIBLE CITIZENS  
EFFECTIVE CONTRIBUTORS