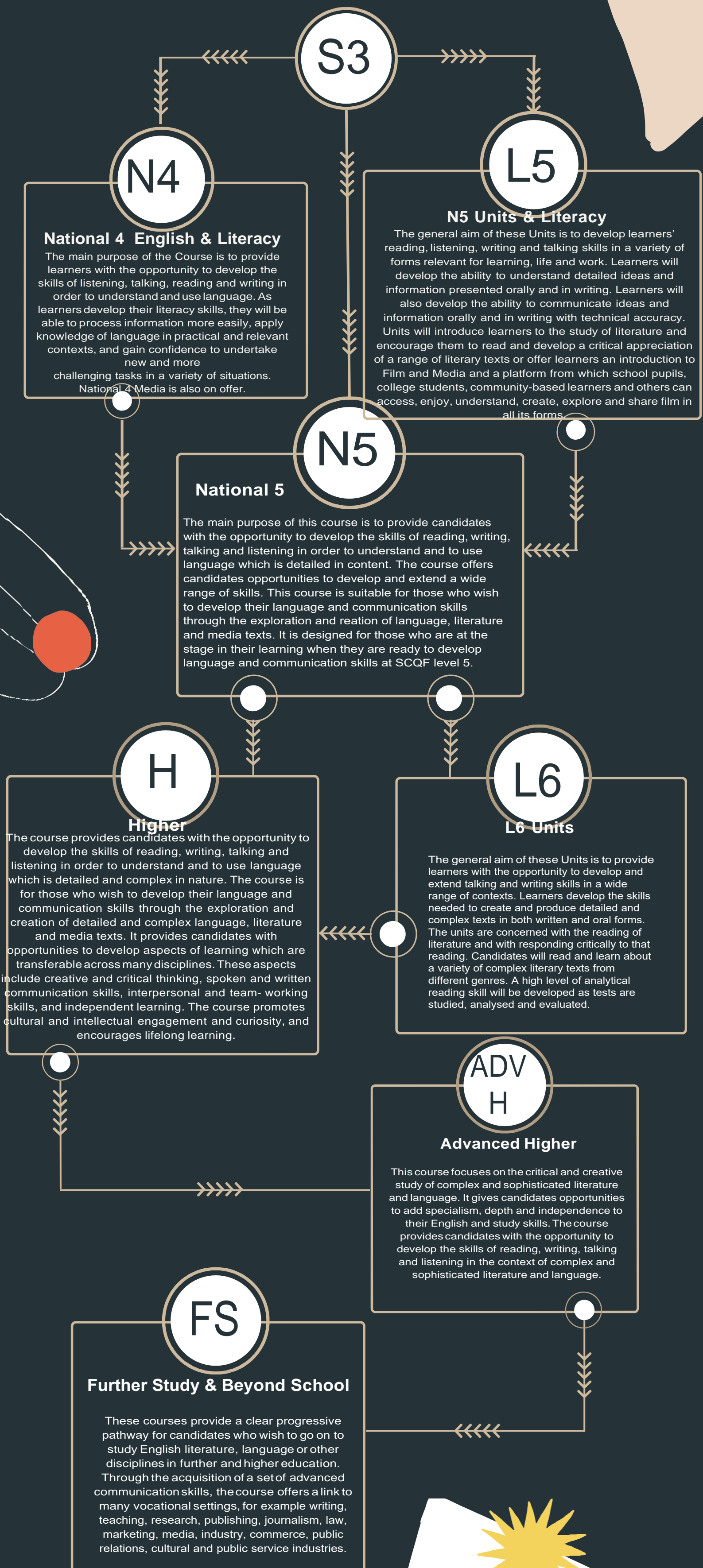
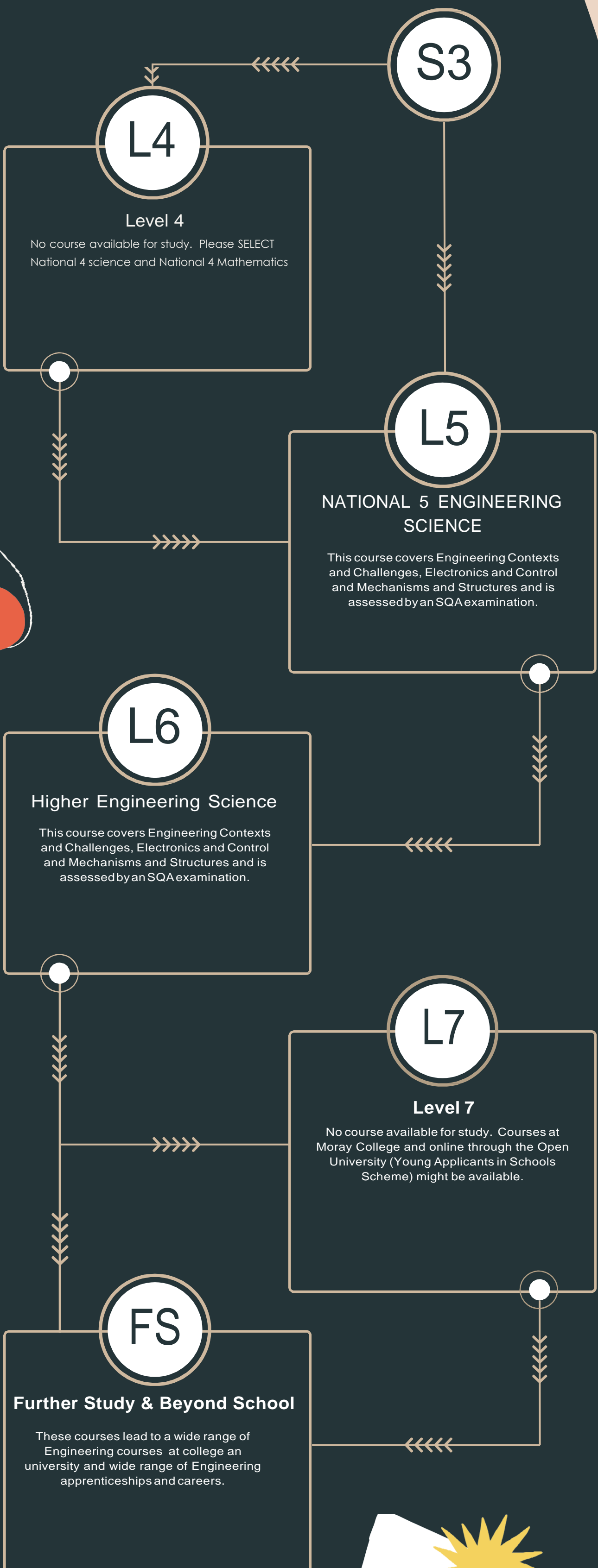


# ENGLISH PROGRESSION MAP



# SENIOR PHASE ENGINEERING SCIENCE PROGRESSION MAP



# SENIOR PHASE PROGRESSION MAP GEOGRAPHY

S3

L3

## Nat 3 People & Society

National 3 People and Society is a great course for those who want to study in the Humanities Department but are not ready to focus on either Geography, History or Modern Studies. The course offers you the opportunity to further develop the skills you have used in S1 à 3 during the BGE phase and is assessed in school, there is no SQA exam. You will work on 3 separate units: Making a Decision, Comparing & Contrasting and Investigating a Topic. You can choose topics to suit your personal interests.

L4

## Nat 4 Geography

National 4 Geography will help you develop the knowledge, understanding and skills you need to better understand and describe the complex world around you. It revolves around 3 key themes: The Human Environment, The Physical Environment and Global Issues. These 3 themes are assessed in school. There is also an 'Added Value Unit' which will present you with the challenge of planning, undertaking, and writing a geographical project. This project works well when it is designed to include fieldwork. This is also assessed in school.

L4

## Nat 4 People & Society

National 4 People and Society is a great course for those who want to study in the Humanities Department. The course offers you the opportunity to practise and develop the skills you will need to make a successful transition to National 4 or 5 Geography, History or Modern Studies. There is no SQA exam, and the 3 units are assessed by your teacher. You will work on 3 separate units: Making a Decision, Comparing & Contrasting and Investigating a Topic, all of which must have a humanities-based theme. Your teacher will advise, support, and help you make sensible decisions regarding each unit, but you should be ready and willing to work independently and make decisions so that your work is based around personal interests.

L5

## Nat 5 Geography

National 5 Geography will help you further develop the knowledge, understanding and skills you need to better understand, describe and explain the complex world in which you live. It revolves around 3 key themes: The Human Environment, The Physical Environment and Global Issues. These 3 themes are assessed in an SQA exam and make up 80% of the overall grade. There is also an 'Assignment' which will present you with the challenge of planning, undertaking, and writing a project with a geographical focus. This project works well when it is designed to include fieldwork. This assignment is assessed by the SQA and makes up 20% of the overall grade.

L6

## Higher Geography

Higher Geography will help you develop, in increasing depth, the knowledge, understanding and skills you need to better understand, describe, explain, and analyse the complex world in which you live. It revolves around the 3 key geographical themes: The Human Environment, The Physical Environment and Global Issues. These 3 themes are assessed in an SQA exam and make up 73% of the overall grade. There is also an 'Assignment' which will present you with the challenge of planning, undertaking, and writing a project with a geographical focus. This project works well when it is designed to include fieldwork. This assignment is assessed by the SQA and makes up 27% of the overall grade.

L7

## Advanced Higher Geography

Advanced Higher Geography aims to offer you a university style experience of the subject. It is entirely assessed by the SQA but unlike the other SQA Geography courses the majority of the grade (66%) comes from a folio: The Geographical Study and The Geographical Issue. The exam itself makes up the rest of the grade (64%). The course suits those who are focused on attending university, can learn independently, are well motivated and have a real interest in geography. Your teacher is more of a tutor than a teacher and you will be expected to meet deadlines and work on multiple topics and areas of the course at the same time. It offers an excellent experience to develop the skills you will require in further education, regardless of subject.

FS

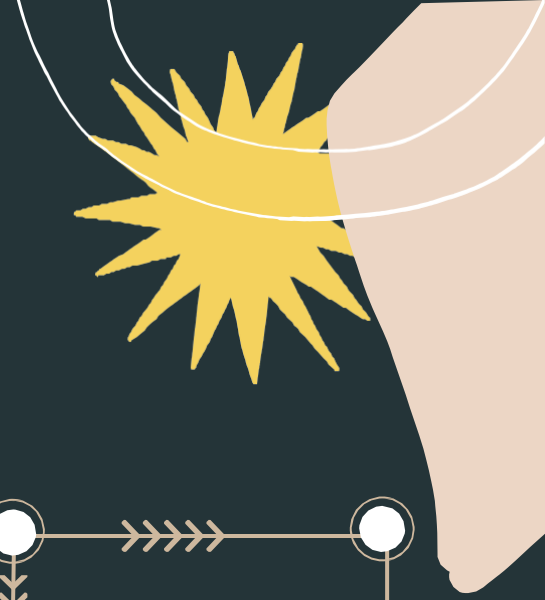
## Further Study

As a geography student, you'll study the world and how humans interact with it. It's largely a science, but you'll also gain insight into other subjects including politics and sociology.

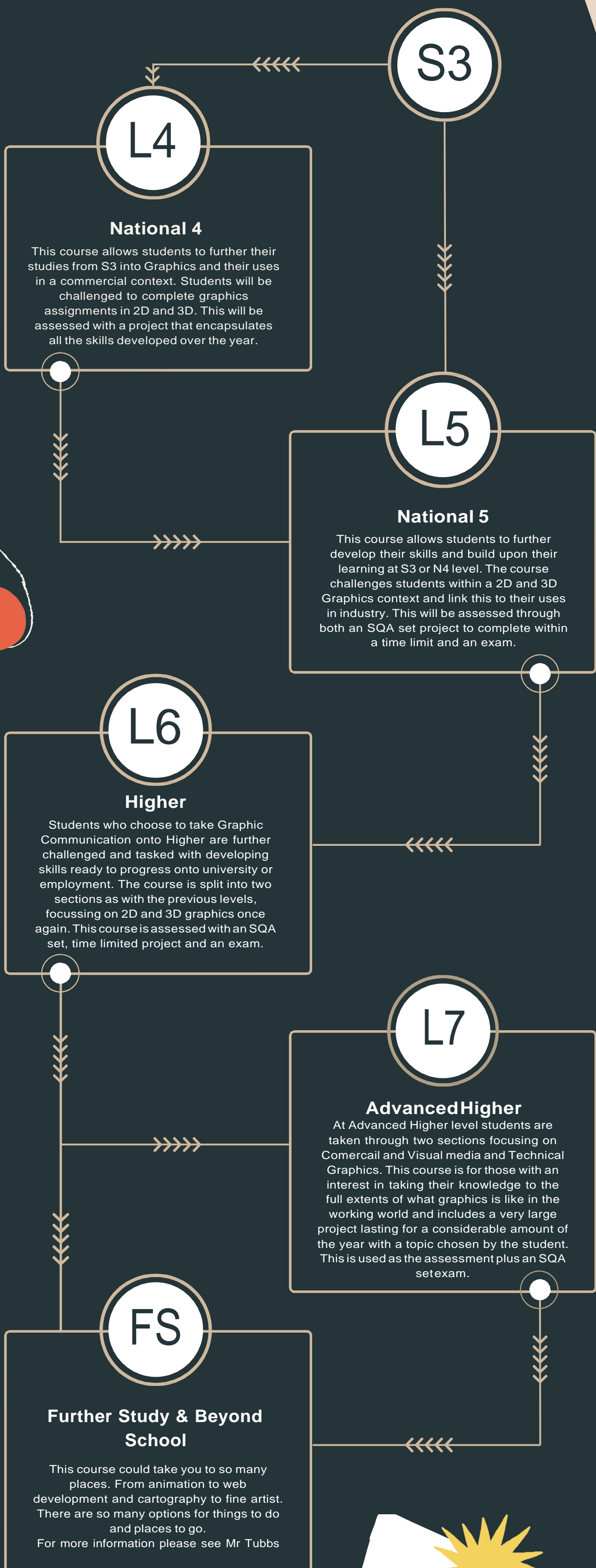
If you're interested in studying geography, there are two routes to choose from:

- Physical geography: The study of the earth and its natural elements. Volcanoes, earthquakes, atmosphere, climate, landscapes, and erosion. Most of the time, this will be a Bachelor of Science (BSc) degree.
- Human geography: How we (humans) interact with the world. Economics, tourism, population, globalisation, and more. This will likely be a Bachelor of Arts (BA).

But you don't have to focus on just the one. You can opt for a combined course.



# GRAPHIC COMMUNICATION PROGRESSION MAP



# SENIOR PHASE PROGRESSION MAP HISTORY

S3

L3

## Nat 3 People & Society

National 3 People and Society is a great course for those who want to study in the Humanities Department but are not ready to focus on either Geography, History or Modern Studies. The course offers you the opportunity to further develop the skills you have used in S1 à 3 during the BGE phase and is assessed in school, there is no SQA exam. You will work on 3 separate units: Making a Decision, Comparing & Contrasting and Investigating a Topic. You can choose topics to suit your personal interests.

L4

## Nat 4 History

National 4 History will help you develop the knowledge, understanding and skills you need to comprehend and describe the past and its significance today. It revolves around 3 key themes: Scottish History, British History and European and World History. National 4 focuses on the following:

- The Era of the Great War, 1900-1928
- The Atlantic Slave Trade, 1770-1807
- Hitler and Nazi Germany, 1919-1939

These themes are assessed in class based on SQA outcomes. Additionally, there is an 'Added Value Unit' which will require students to plan and write a historical project.

L4

## Nat 4 People & Society

National 4 People and Society is a great course for those who want to study in the Humanities Department. The course offers you the opportunity to practise and develop the skills you will need to make a successful transition to National 4 or 5 Geography, History or Modern Studies. There is no SQA exam, and the 3 units are assessed by your teacher. You will work on 3 separate units: Making a Decision, Comparing & Contrasting and Investigating a Topic, all of which must have a humanities-based theme. Your teacher will advise, support, and help you make sensible decisions regarding each unit, but you should be ready and willing to work independently and make decisions so that your work is based around personal interests.

L5

## Nat 5 History

National 5 History will help you further develop the knowledge, understanding and skills you need to comprehend and describe the past and its significance today. It revolves around 3 key themes: Scottish History, British History and European and World History. National 5 focuses on the following:

- The Era of the Great War, 1900-1928
- The Atlantic Slave Trade, 1770-1807
- Hitler and Nazi Germany, 1919-1939

These themes are assessed in the exam and account for 80% of the final grade. The remaining 20% is assessed through 'The Assignment' which will require students to plan and write a historical project.

L6

## Higher History

Higher History will help you develop, in increasing depth, the knowledge, understanding and skills you need to comprehend and describe the past and its significance today. It revolves around 3 key themes: Scottish History, British History and European and World History. Higher focuses on the following:

- Migration and Empire, 1830-1939
- Britain, 1851-1951
- USA, 1918-1968

These themes are assessed in the exam and account for 73% of the final grade. The exam is split into two: paper 1 assessing Scottish History and paper 2 assessing British and European and World History. The remaining 27% is assessed through 'The Assignment' which will require students to plan and write a historical project.

L7

## Advanced Higher History

The Advanced Higher course is based on studying one single topic. The specific topic you are taught will vary depending on what you are interested in and the resources available.

Advanced Higher History is graded out of 140 marks, with grades A-D available for those gaining the award.

- Exam – The course involves an exam worth 90 marks, which is three hours long. Questions will cover essays and source skills.
- Dissertation – There is also a dissertation (research project) worth 50 marks. Time is given to research this topic before handing in the final version.

FS

## Further Study

As a history student, you will be able to study a range of historical topics which explore the medieval, early modern and modern periods. These topics may touch upon various locations across the globe including Scotland, America or France. You will gain a deeper understanding of the relationships between cultures and national traditions. You may encounter a variety of issues, including:

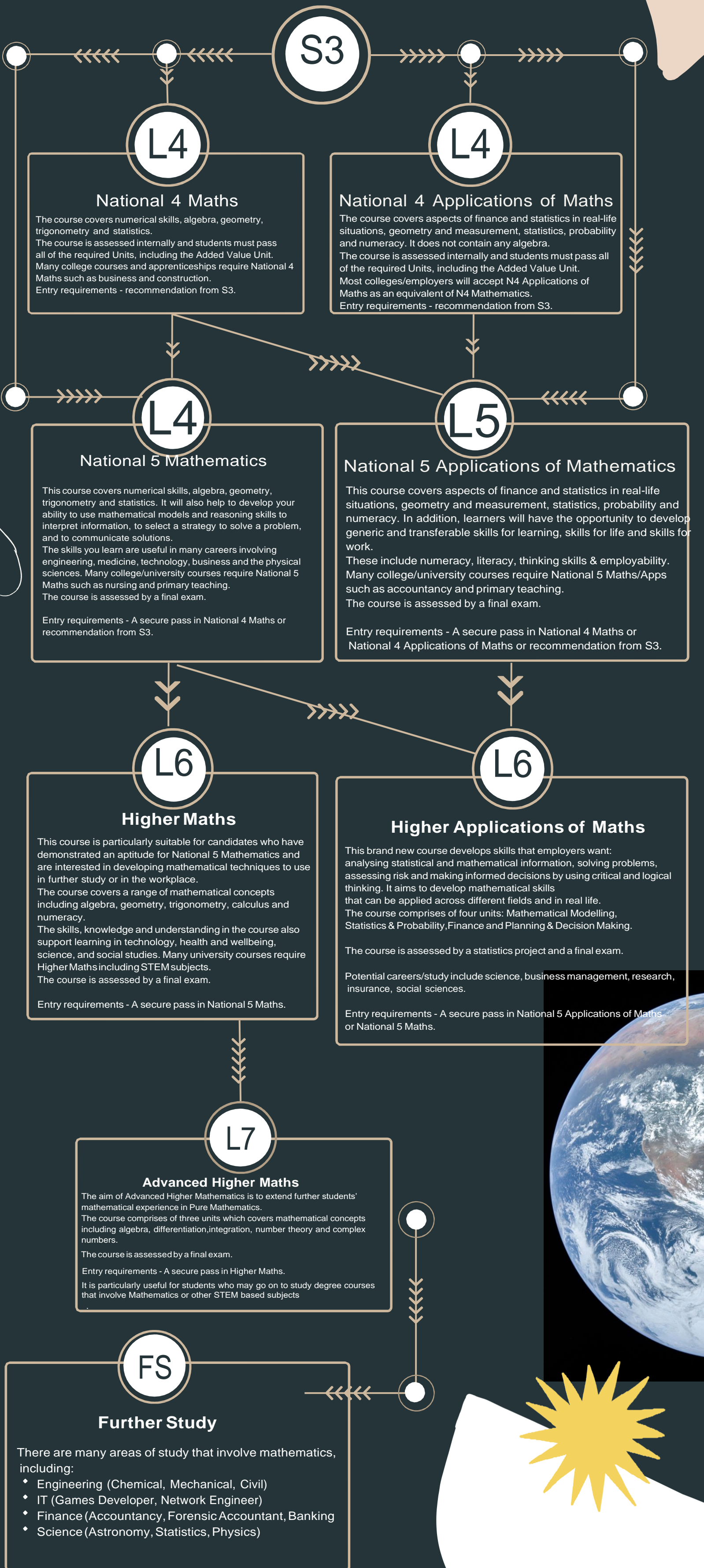
- Political history
- Cultural history
- Social history
- Economic history
- Intellectual history
- Gender history

As a history graduate, you will be able to enter many different careers, from the heritage sector and teaching to consultancy, management and financial services.

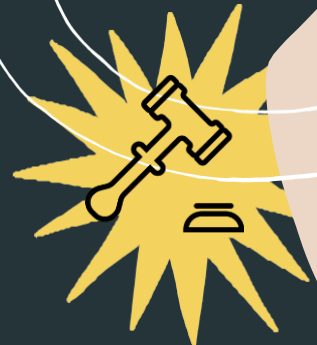
History



# SENIOR PHASE PROGRESSION MAP MATHEMATICS



# SENIOR PHASE PROGRESSION MAP MODERN STUDIES



S3

L3

## Nat 3 People & Society

National 3 People and Society is a great course for those who want to study in the Humanities Department but are not ready to focus on either Geography, History or Modern Studies. The course offers you the opportunity to further develop the skills you have used in S1 à 3 during the BGE phase and is assessed in school, there is no SQA exam. You will work on 3 separate units: Making a Decision, Comparing & Contrasting and Investigating a Topic. You can choose topics to suit your personal interests.

L4

## Nat 4 Modern Studies

You will develop knowledge and understanding of contemporary political, social and international issues. The Course will develop a range of skills including evaluation and research. In Modern Studies you will acquire an understanding and respect for human rights & responsibilities, democracy and the role of government, social issues and the ways in which societies deal with conflict. The course contributes to the broad general education and the transferable skills you develop will be applicable in other subjects and everyday life. Modern Studies will help you to become an informed and active citizen

L4

## Nat 4 People & Society

National 4 People and Society is a great course for those who want to study in the Humanities Department. The course offers you the opportunity to practise and develop the skills you will need to make a successful transition to National 4 or 5 Geography, History or Modern Studies. There is no SQA exam, and the 3 units are assessed by your teacher. You will work on 3 separate units: Making a Decision, Comparing & Contrasting and Investigating a Topic, all of which must have a humanities-based theme. Your teacher will advise, support, and help you make sensible decisions regarding each unit, but you should be ready and willing to work independently and make decisions so that your work is based around personal interests.

L5

## Nat 5 Modern Studies

Modern Studies opens up the world of contemporary society for you. The purpose of Modern Studies is to develop your knowledge and understanding of contemporary political and social issues in 3 different contexts: Scottish, United Kingdom and International. Modern Studies makes a distinctive contribution to the curriculum by drawing on the social sciences of politics, sociology and economics and where appropriate, of associated ideas drawn from other social subjects. It thereby adopts a multidisciplinary approach. Through the Modern Studies Course, you will undertake a coherent study of contemporary society. The Course will develop the skills to help you interpret and participate in the social and political processes you will encounter now and in the future.

L6

## Higher Modern Studies

The course uses a multidisciplinary approach to develop your knowledge and understanding of contemporary political and social issues in 3 contexts: Scottish, United Kingdom (UK) and International.

The course will help you to develop the skills required to successfully interpret and participate in the social and political processes you will encounter in your life. You will also develop a range of research, analytical and evaluating skills, and an understanding of:

- The democratic process and complex political issues
- Complex social and economic issues within the 3 contexts, and ways of addressing needs and inequalities
- State involvement in society
- The nature and processes of conflict resolution
- The importance of human and legal rights and responsibilities, and their application in different societies



L7

## Advanced Modern Studies

The course uses a multidisciplinary approach to develop candidates' knowledge and understanding of contemporary political and social issues in local, Scottish, United Kingdom (UK) and international contexts. Candidates develop the skills to interpret and participate in the social and political processes they encounter in their lives. The course aims to enable candidates to:

- Analyse the complex political and social processes that lead to an understanding of contemporary society
- Understand and analyse complex political or social issues in the UK and adopt a comparative international approach
- Develop a range of independent practical research skills that allow them to carry out research into a contemporary issue
- Present complex ideas in a range of ways
- Analyse, evaluate, and synthesise a range of sources relating to complex issues
- Develop a K&U of social science research methods
- Apply a multidisciplinary approach drawing on analysis from a range of social sciences



FS

## Further Study

Modern Studies lends itself to a number of further education opportunities.

This is due to the wide range of topics and concepts covered and also the variety of skills experienced throughout the Modern Studies pathway.

Popular university course for Modern Studies pupils include:

- BA (Hons) Criminology
- BA (Hons) Sociology
- BA (LLB) Law
- BA (Hons) Politics



# SENIOR PHASE PROGRESSION MAP MUSIC

S3

L4

**National 4 Music**  
This course contains three elements:  
Performing, Composing and Listening  
This course is Internally assessed

**National 4 Music Technology**  
This course contains three elements:  
Understanding 20th and 21st Century Music  
Music Technology Skills  
Music Technology in context

L5

**National 5 Music**  
This course contains three elements:  
Performing, Composing and Listening  
Pupils must perform a programme of music  
on two instruments lasting for a total of 8  
minutes, this is assessed by an external  
examiner and takes place in  
February/March  
Pupils must compose a short piece of music  
in any style on any instrument of their  
choosing - this is assessed by the SQA  
Pupils will sit a listening exam which is  
assessed by the SQA

L6

<p><b>Higher Music</b> This course contains three elements: Performing, Composing and Listening Pupils must perform a programme of music on two instruments lasting for a total of 12 minutes, this is assessed by an external examiner and takes place in February/March  Pupils must compose a short piece of music in any style on any instrument of their choosing - this is assessed by the SQA Pupils will sit a listening exam which is assessed by the SQA</p>	<p><b>Music for Well Being NPA</b> This unit equates to 24 SCQF credit points  This course contains four units: Music and Well being - looking at how music affects mood and well being Organising a community based music activity Professional practice for community musicians - looking at how to make a living out of being a community musician Participate in a community based music making activity All these units are internally assessed</p>
--	--

L7

**Advanced Higher Music**  
This course contains three elements:  
Performing, Composing and Listening  
Pupils must perform a programme of music  
on two instruments lasting for a total of 18  
minutes, this is assessed by an external  
examiner and takes place in May  
Pupils must compose a short piece of music  
in any style on any instrument of their  
choosing - this is assessed by the SQA  
Pupils will sit a listening exam which is  
assessed by the SQA

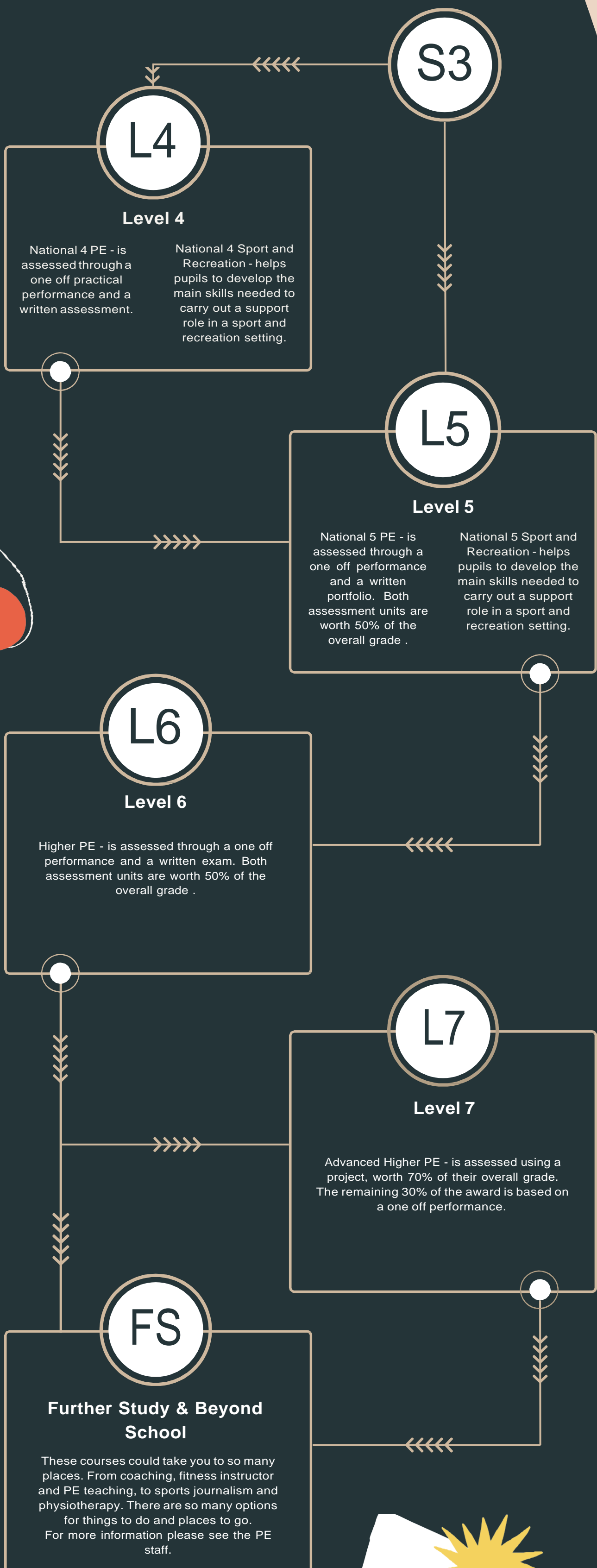
FS

**HNC/HND Music**  
**BMusEd**  
**Performance BA**

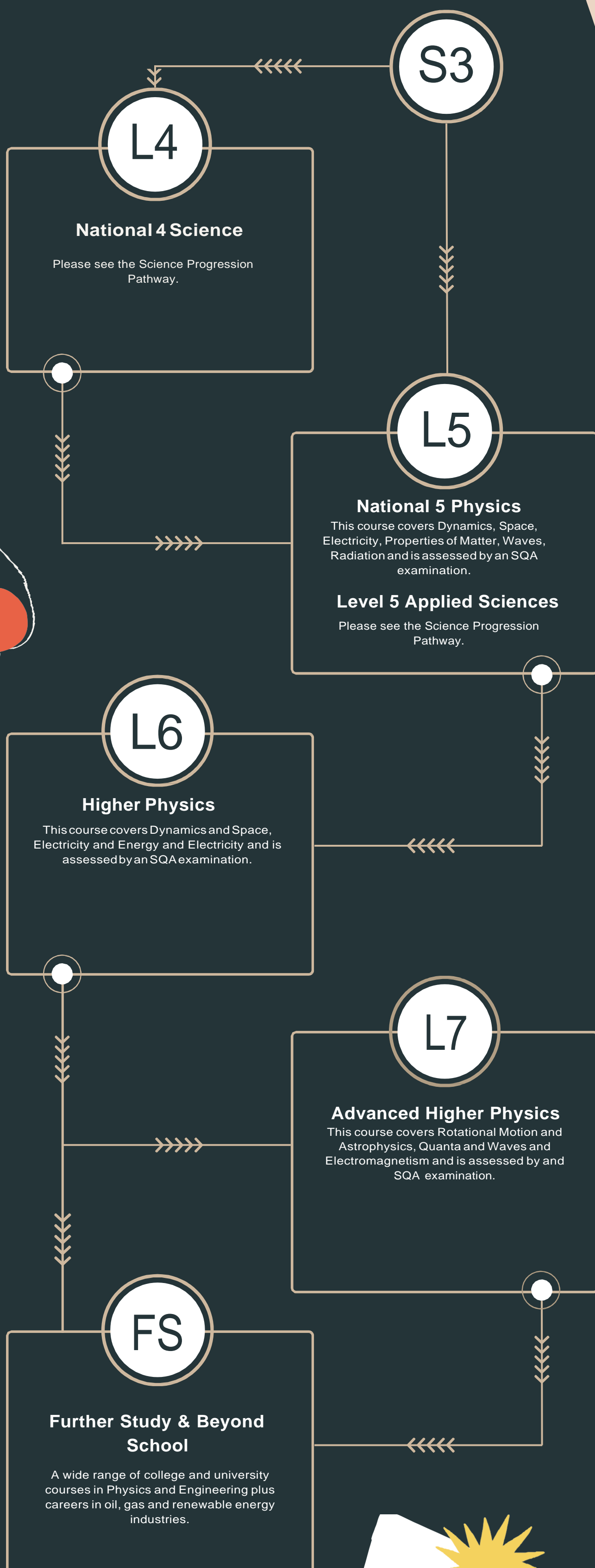




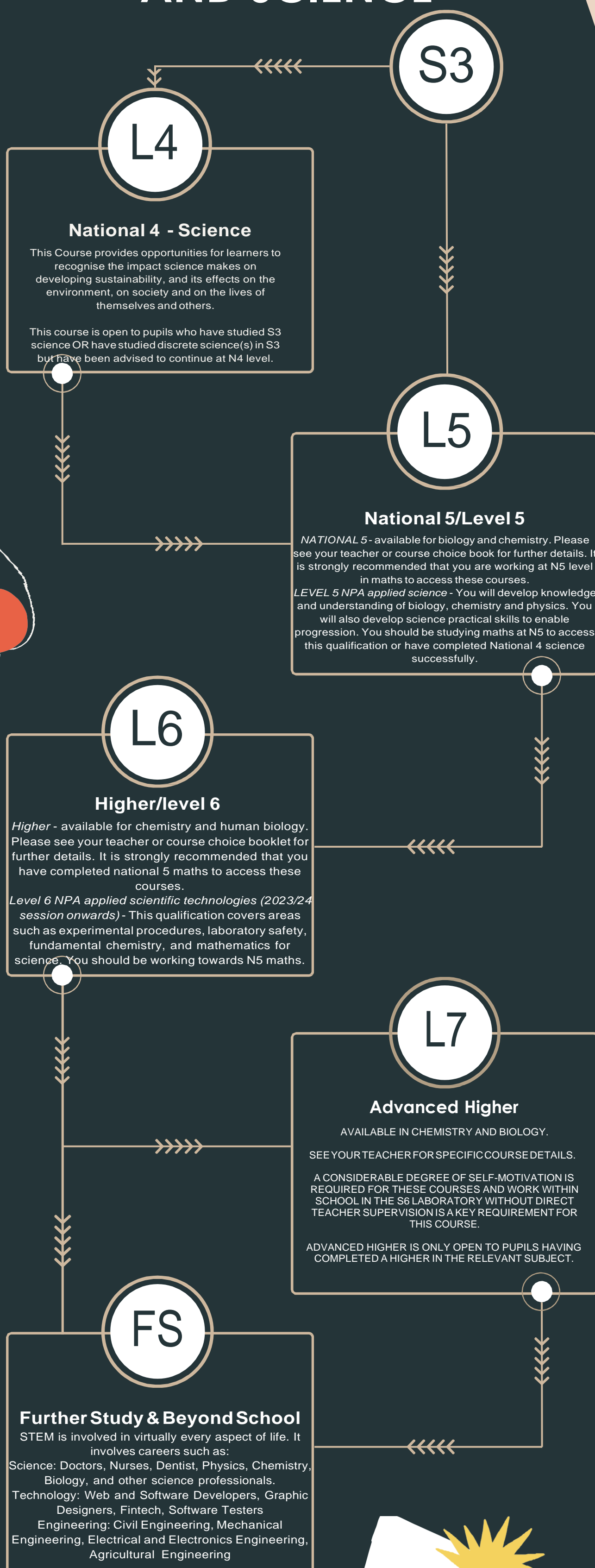
# PHYSICAL EDUCATION SENIOR PHASE PROGRESSION MAP



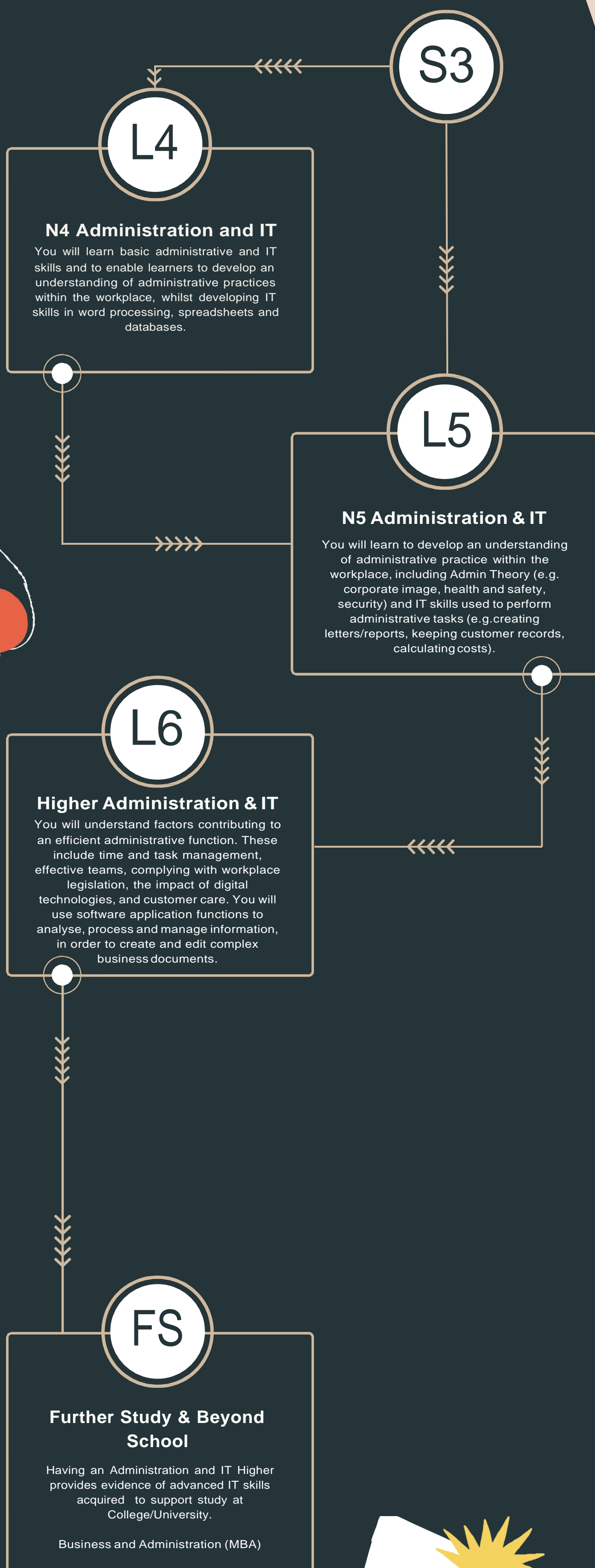
# SENIOR PHASE PHYSICS PROGRESSION MAP



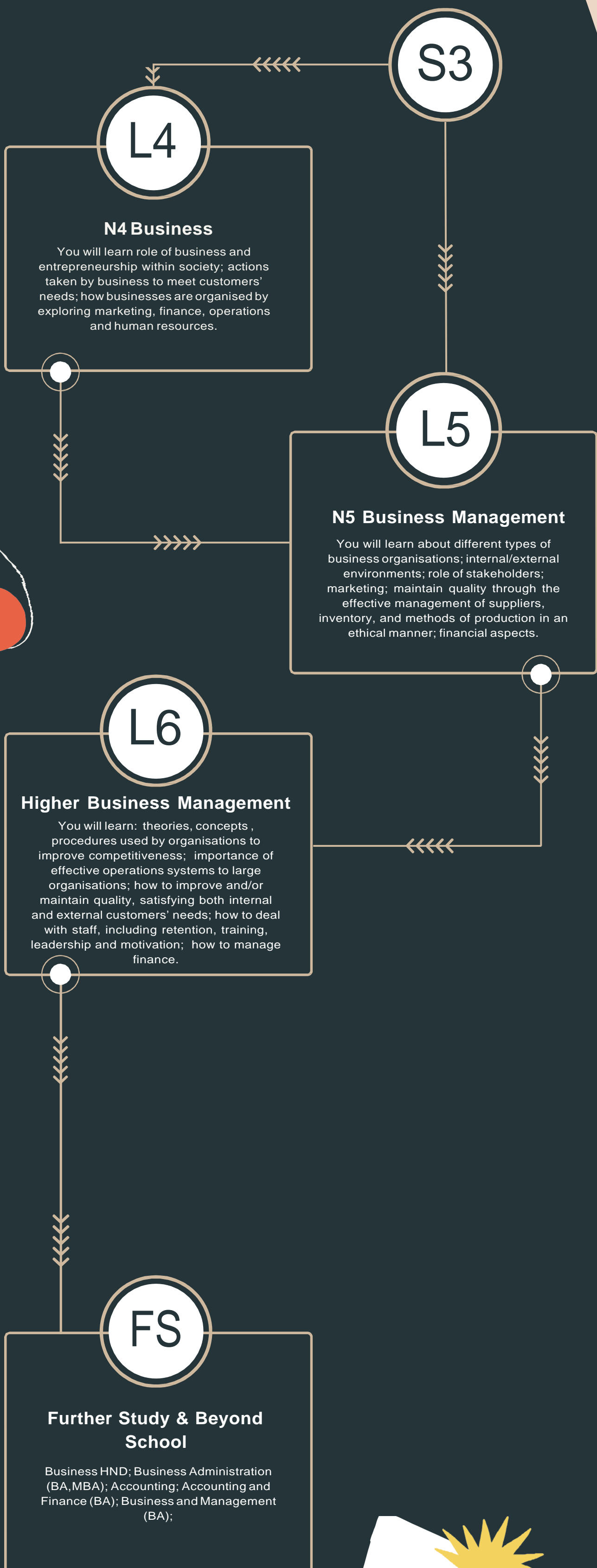
# SENIOR PHASE PROGRESSION MAP - CHEMISTRY, BIOLOGY AND SCIENCE



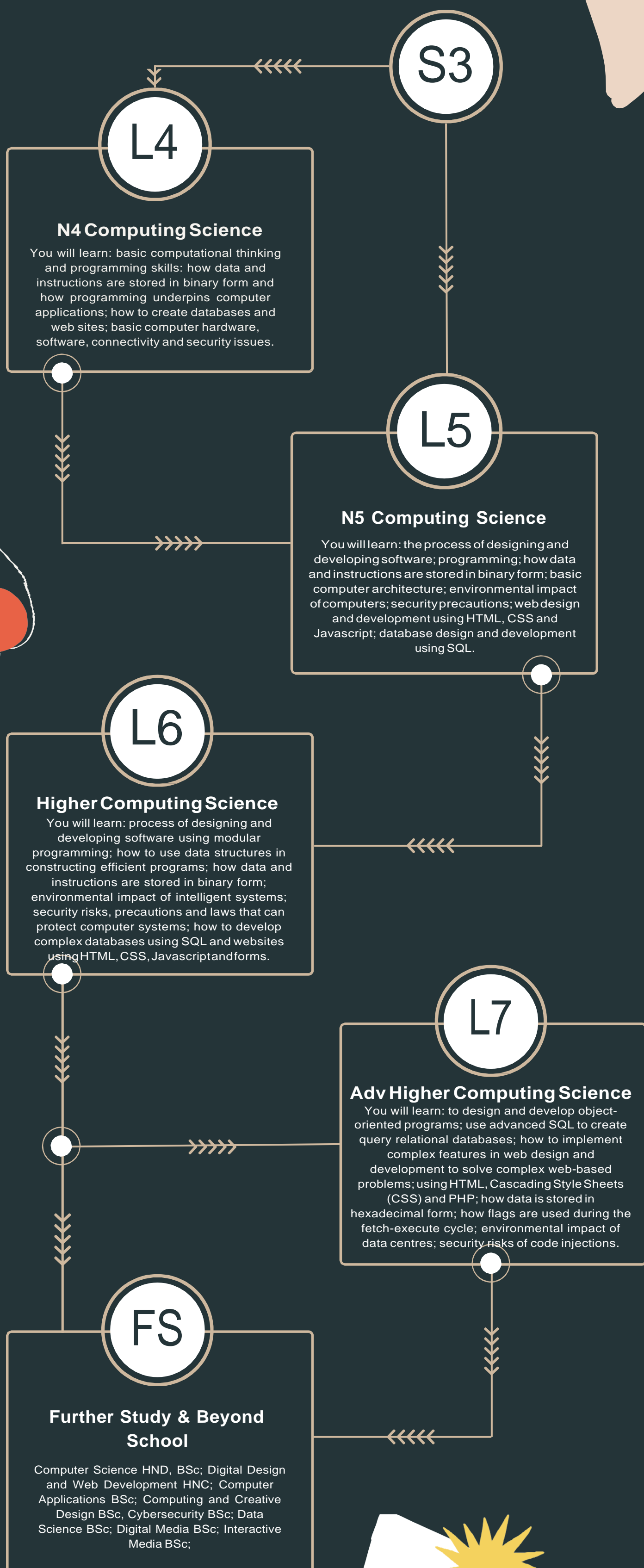
# SENIOR PHASE PROGRESSION MAP ADMIN & IT



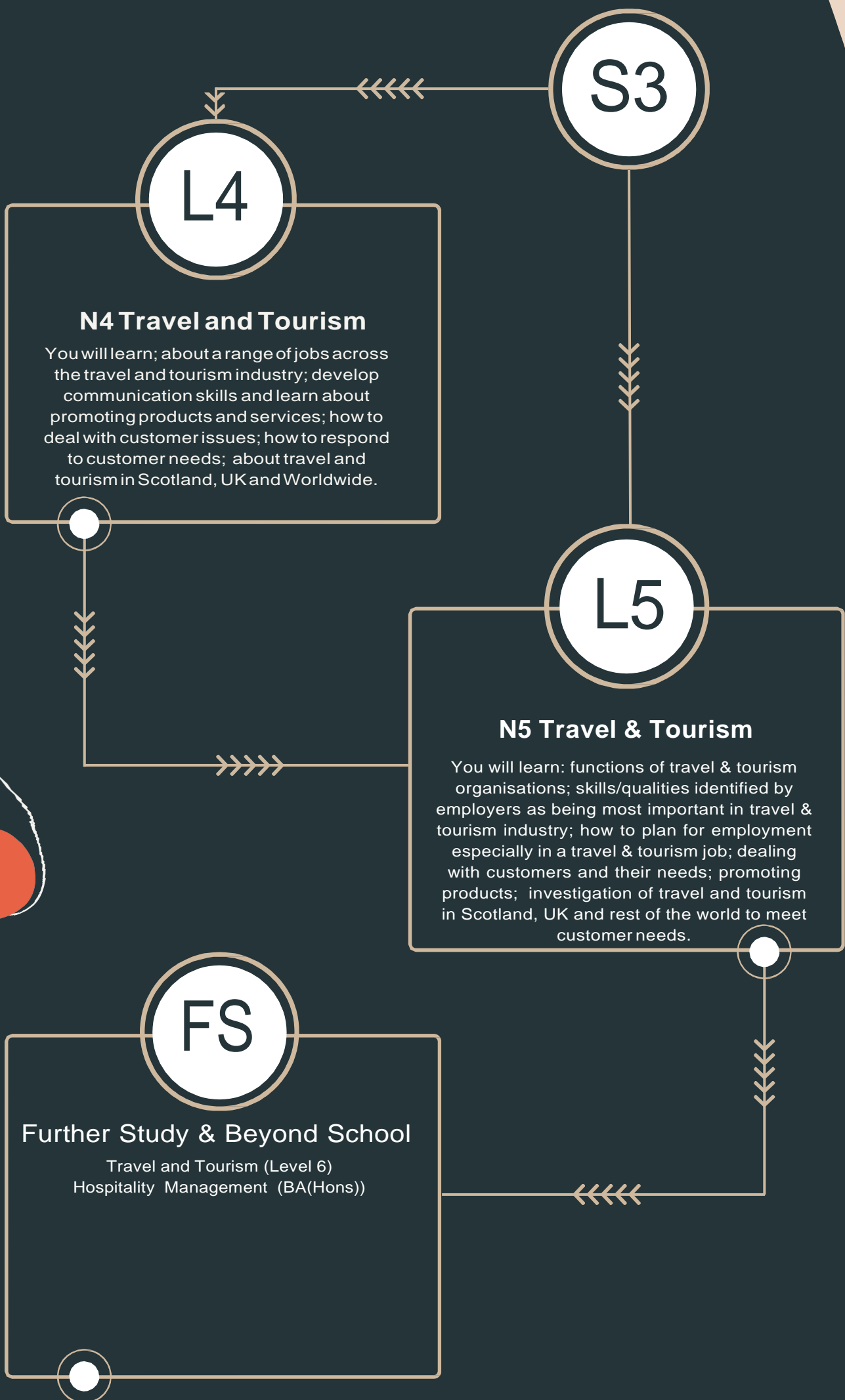
# SENIOR PHASE PROGRESSION MAP BUSINESS



# SENIOR PHASE PROGRESSION MAP COMPUTING



# SENIOR PHASE PROGRESSION MAP TRAVEL & TOURISM



# SENIOR PHASE CAKE CRAFT PROGRESSION MAP

**S3**

**NPA  
BAKERY**

Complete a range of different baked products from bread, pastry and scones etc developing skills and knowledge in a practical setting.

**CAKE  
CRAFT**

Develop skills and knowledge in all stages of cake making and the science behind ingredients and baking process. Design and make cakes for specific occasions using a range of techniques and ingredients.

**FS**

## **Further Study & Beyond School**

Achieving qualifications in both/either cake craft or NPA bakery can lead to a career in food preparation, cake decoration. Further study can be completed at college



# SENIOR PHASE CAKE CRAFT PROGRESSION MAP

**S3**

**NPA  
BAKERY**

Complete a range of different baked products from bread, pastry and scones etc developing skills and knowledge in a practical setting.

**CAKE  
CRAFT**

Develop skills and knowledge in all stages of cake making and the science behind ingredients and baking process. Design and make cakes for specific occasions using a range of techniques and ingredients.

**FS**

## **Further Study & Beyond School**

Achieving qualifications in both/either cake craft or NPA bakery can lead to a career in food preparation, cake decoration. Further study can be completed at college

# SENIOR PHASE PRACTICAL COOKERY PROGRESSION MAP

S3

L3

L4

L5

Complete three units  
Understanding and using ingredients  
Organisational skills  
Cookery skills techniques and processes  
Develop techniques of food preparation and present dishes to a high standard.  
Learn about different ingredients and how to prepare them properly and make high quality dishes.  
Develop knowledge and understanding in sustainability, local produce and dietary goals.

Complete three units  
Understanding and using ingredients  
Organisational skills  
Cookery skills techniques and processes  
Develop techniques of food preparation and present dishes to a high standard.  
Learn about different ingredients and how to prepare them properly and make high quality dishes.  
Develop knowledge and understanding in sustainability, local produce and dietary goals.

Complete three units  
Understanding and using ingredients  
Organisational skills  
Cookery skills techniques and processes  
Exam is to produce 3 dishes within 2hr 30 mins.  
Develop techniques of food preparation and present dishes to a high standard.  
Learn about different ingredients and how to prepare them properly and make high quality dishes.  
Develop knowledge and understanding in sustainability, local produce and dietary goals.

FS

## Further Study & Beyond School

Achieving a Practical cookery qualification supports a career in hospitality, health and nutrition, product development and many more. Further study can be completed at both university and college.

# SENIOR PHASE HEALTH & FOOD PROGRESSION MAP

