



WIMBLEDON
LAWN TENNIS
MUSEUM

EXPLORE WIMBLEDON

PEOPLE AND PLACES



GIRL POWER

Ladies had to wait seven years before they too could compete in their own tournament.

In 1884, the first Ladies' champion was Maud Watson who beat her elder sister in the final.

Three years later, Lottie Dod became Wimbledon's youngest tennis champion at just 15.

She soon became an expert in many other sports.

Can you find eight of the sports below?

C	U	P	O	S	S	A	Q	N
A	A	R	C	H	E	R	Y	U
B	A	A	H	O	C	K	E	Y
C	R	I	C	K	E	T	G	L
R	G	T	A	H	V	I	N	A
A	O	N	W	O	S	A	I	K
F	E	W	I	A	P	J	T	U
L	I	F	I	D	G	X	A	A
O	A	O	E	N	I	A	K	T
G	D	P	T	N	G	R	S	A



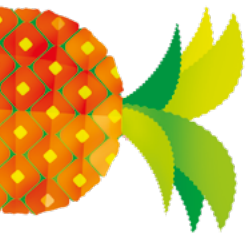
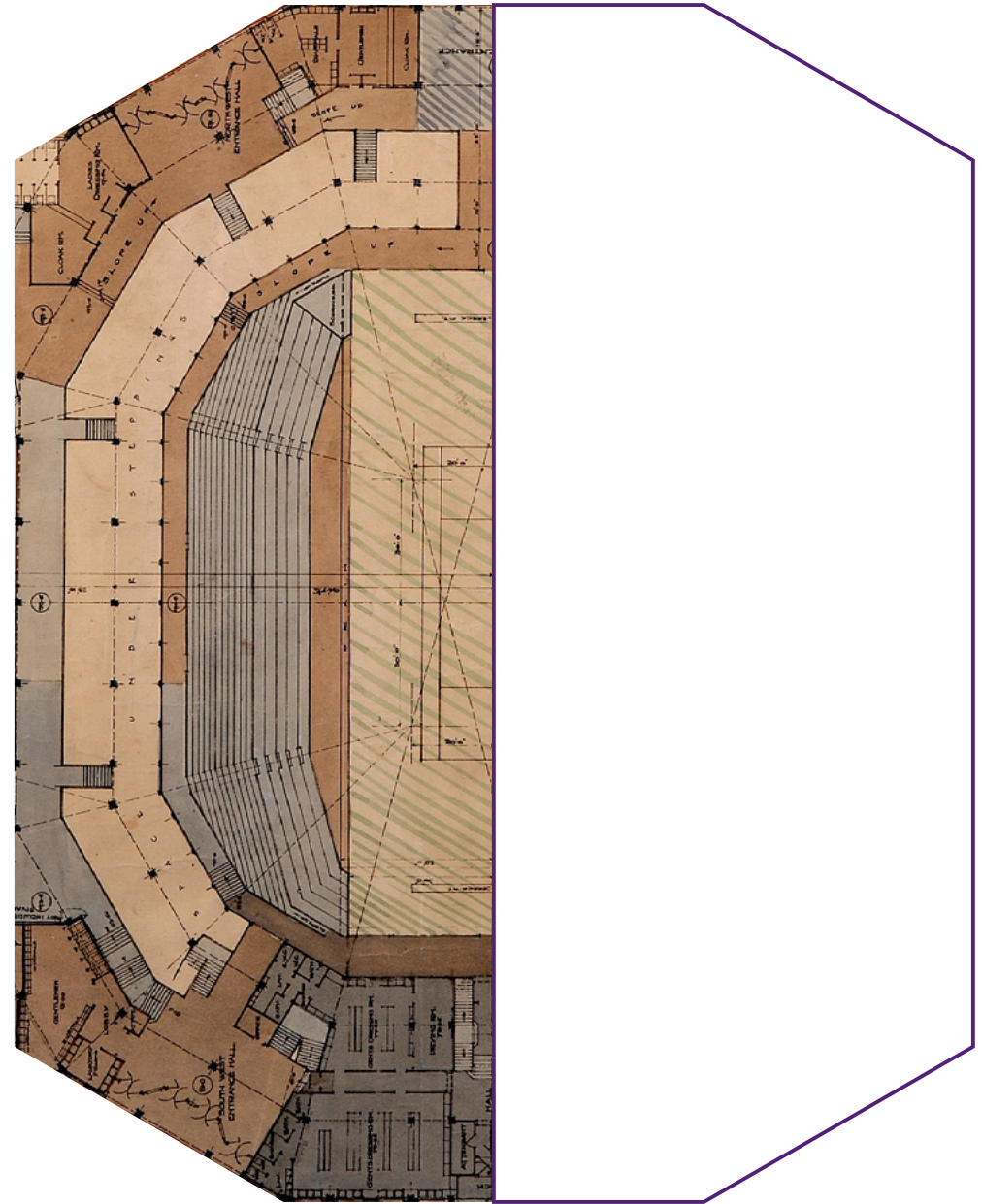
PEACHES & CREAM

After the First World War, Wimbledon became very popular. Spectators from all over the world came to see tennis stars become Wimbledon champions.

The Club decided to find a bigger home and moved from Worple Road to Church Road in 1922. The Championships have been held there ever since.

Architect Captain Stanley Peach was given the important job of designing the 'new' Centre Court.

Use your symmetry skills. Complete the drawing he has started.



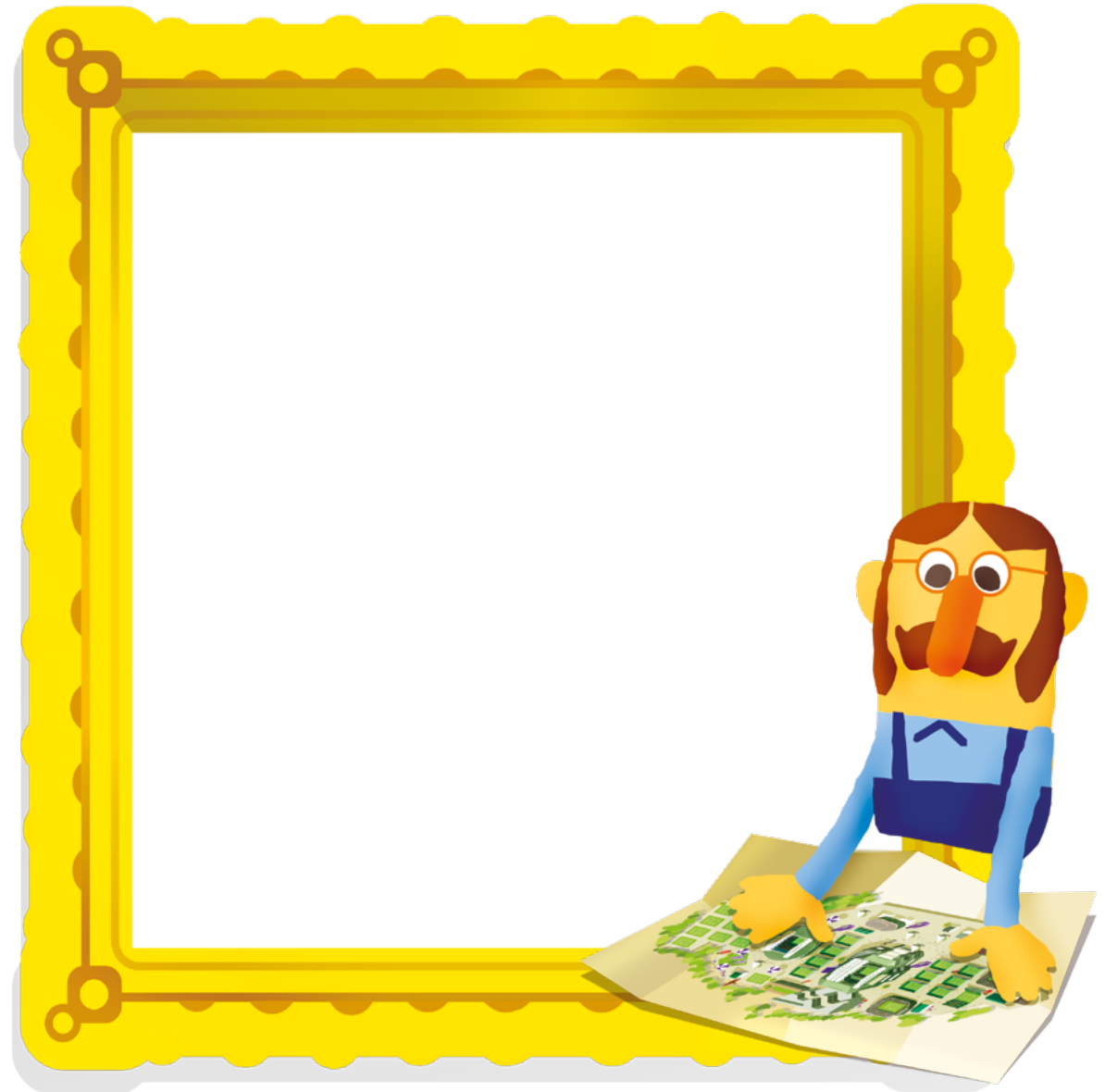
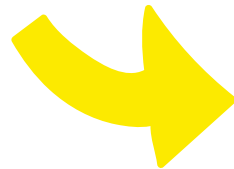
CENTRE STAGE

Centre Court is Wimbledon's oldest and largest stadium. It is one of the most famous tennis stadiums in the world.

15,000 lucky spectators can sit inside Centre Court and watch the best tennis players in the world.

It has a retractable roof, so play can continue rain or shine.

Design your very own Centre Court here.



THE No.1 COURT ROOF

In 2019, we unveiled a brand-new roof on our second biggest stadium, No.1 Court. If it rains heavily, we can keep playing, just like on Centre Court.

DID YOU KNOW?

750

people a day worked on the roof

40

miles of scaffolding required

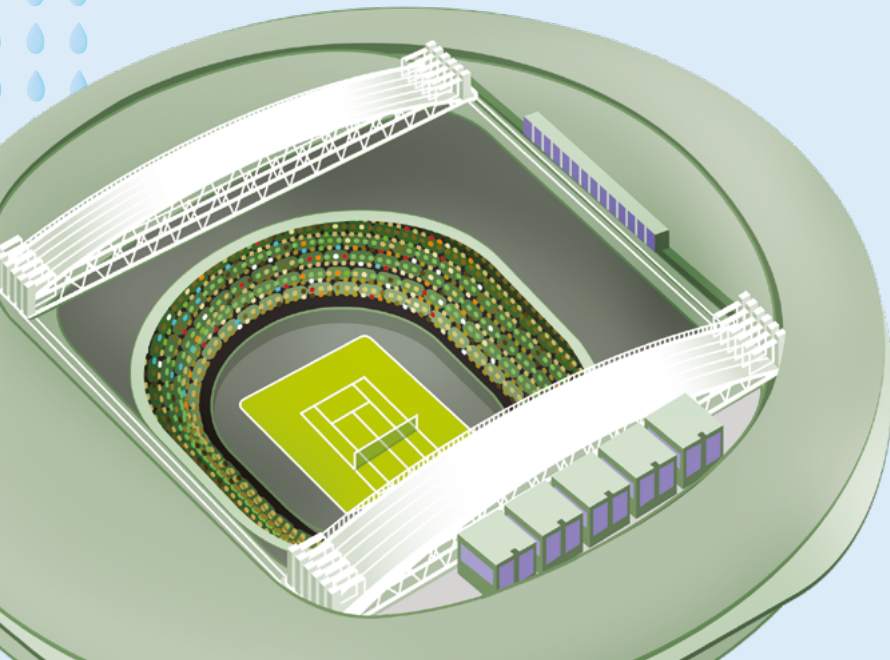
7,500

tonnes of steel required

x11

**THAT'S AS MUCH AS
11 BLUE WHALES!**

The new roof is held together with 11 giant trusses. Each truss weighs **100 tonnes** and was lifted into place by Europe's largest stationary crane used to lift unwieldy things like jumbo jets.



TENNIS ACE

Complete these challenges to see what it takes to become a Wimbledon Champion!

Take on Andy Murray in his #100VolleyChallenge!

Hit or throw a ball with one other person without dropping it.
Can you get to 100?

Take part in the #WimbledonMuseumChallenge on the @WimbledonMuseum Instagram

Recreate a piece of artwork from the Museum's collection

Research your favourite Wimbledon champion.

- When did they start playing tennis?
- Which country are they from?
- How many times have they won Wimbledon?

