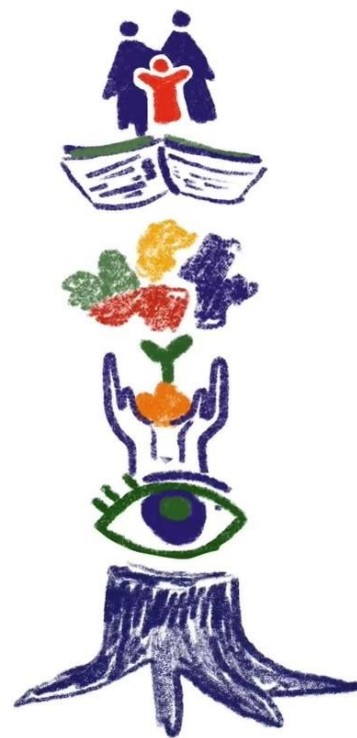


Additional Support Needs (ASN) & Outreach Service

English as an Additional Language



Supporting Ukrainian Children & Young People – information & advice for schools



This pack highlights some key resources as recommended by the English as an Additional Language team to support Ukrainian Children & Young People in schools.

Further resources and information can be found on the EAL website [EAL Ukrainian Support Resources](#) and on the EAL team's Google Drive. Access to the Drive can be requested through the following link [EAL Ukrainian Support Resources \(Google Drive\)](#). Please note, some of the resources linked in this document require access to be granted before they can be viewed.

Please contact your EAL link teacher and/or the ASN & Outreach office (01224 261717) with any queries.

Welcoming Families, Children & Young People

Refugee and Migrant Welcome Packs eis.org.uk	Available as PDFs and audio (P1-4, Primary 5-S3, S4-6 and parent/carer's guides). Parent/carer's guides available in a range of languages (audio and PDF download). Copies of the booklets can be requested by schools through Carole Thorpe (cthorpe@eis.org.uk).
---	--

Translating

Google Translate	Works best for individual words and simple phrases. Not recommended for translation of large amounts of script.
SayHi Translate	Real-time translation through speech recognition. iOS and Android devices.



InterTrans@aberdeencity.gov.uk	For translation of larger volumes of text, documents etc.
--	---

Classroom Support

Read & Write extension on Google Chrome	Available to all schools, quick reference guide available on EAL's Google Drive space R&W Quick Reference Guide . Further support is available using the following links: <ul style="list-style-type: none"> • Texthelp Youtube Playlist • Texthelp Support Pages
Languagenut	Unlimited pupil numbers and no cost for Ukrainian pupils.
Linguascope	Suitable for beginners and improvers. Requires software to be purchased by schools. Has been used previously by the EAL team, whose advice can be sought to help decide whether a purchase is appropriate.
Change language settings on IT devices	You can install and change default languages (including Ukrainian and Russian) on Windows, Apple and Chromebook devices. <ul style="list-style-type: none"> • Windows devices: Check or change language settings (microsoft.com) • Chromebooks: Manage your Chromebook's languages - Chromebook Help (google.com)



	<ul style="list-style-type: none"> • Chrome browser: Change Chrome languages & translate webpages - Computer - Google Chrome Help • Apple devices: Change the language on your iPhone, iPad or iPod touch – Apple Support (UK)
--	--

Professional Learning for staff

Supporting Ukrainian Children & Young People

How to Welcome Ukrainian arrivals in UK schools.	https://youtu.be/YS7imlESFx0
The Central Role of Language in supporting new refugee arrivals.	https://youtu.be/aQoUANFTOPA
Supporting New Refugee Arrivals in the Primary Classroom.	https://youtu.be/M6sB49q88Ws
<p>Understanding the Ukrainian School Context.</p> <p>A Q&A about the Ukrainian schooling system to help ACC staff understand the Children & Young People’s experiences to date.</p>	<p>Teams event with guest speaker, date TBC.</p> <p>The form linked below can be used to register interest and record any questions you would like to be considered.</p> <p>The event will be recorded, questions can be asked even if you are not able to attend.</p> <p>Sign-up and Questions</p>



Supporting all EAL learners

Developing Induction Programmes for newly arrived EAL pupils.	https://youtu.be/1sCPZh8BLvo
Understanding EAL.	https://youtu.be/AiMP8z6s9Zk
Supporting EAL Learners.	https://youtu.be/tv8mnnT1MwY
Supporting EAL learners with building vocabulary.	https://youtu.be/CbrtdZ9MGWk
Practical advice and suggestions from the EAL team.	Class Teachers School Support Staff Early Years
Profiles of Competency. Summary of developmental language characteristics at different stages of English Acquisition with associated support strategies. Aimed at Primary but applies to Secondary also.	Listening & Talking Reading Writing

Trauma & ACES

Compassionate and Connected Classrooms & Communities (as recommended by the Educational Psychology Service).	Supporting Learners (Sharepoint)
--	--