

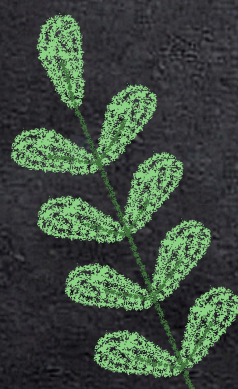
# Family Friendly School Improvement Plan 25-26



## Priority 1 Raising Attainment

### Reading Writing Numeracy

- Develop high quality play experiences in English and Gaelic.
- Increase pupil experiences in outdoor learning.
- Work towards being a Gold Reading School.
- Support teachers to improve the teaching of writing.
- Finalise our 'curriculum rationale' detailing what and how pupils learn at Whinhill.



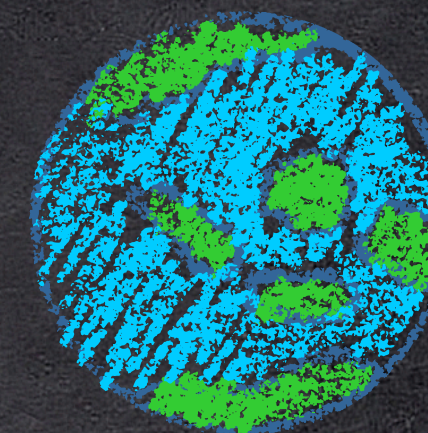
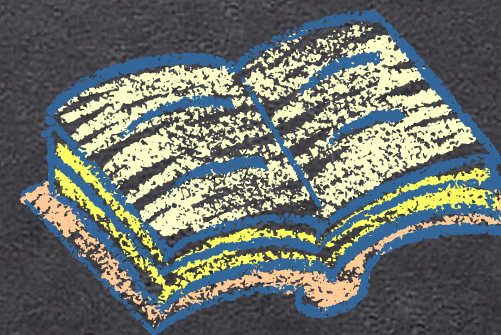
## Priority 2 Closing the attainment gap

- Increase support for pupil attendance.
- Improve pupil progress in reading, writing and numeracy through targeted support.
- Continue to decrease the cost of the school day for families.



## Priority 3 Improvements in Health & Wellbeing

- Continue to develop our understanding of racial literacy.
- Create a new anti-bullying policy with pupils, parents, staff and the wider community.
- Ensure all children experience appropriate interventions to meet their needs including digital technology.
- Create a Family Friendly Padlet to support pupils and parents to overcome barriers to learning.
- Become a 'Dyslexia Changemaker' by continuing to develop as a dyslexia-friendly school.



## Priority 4 Skill Development

- Develop pupil understanding of 'meta-skills'
- Continue to develop a variety of pupil leadership skills.
- Introduce the 'Pinkie Promise' to pupils.
- Implement new science experiences with pupils.