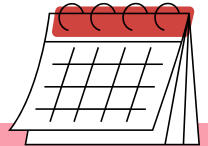




WHINHILL PRIMARY SCHOOL BUN-SGOIL CHNOC A' CHONAISG

Primary 1 newsletter Term 2



What a busy term we've just had! Our boys and girls settled into school so well and worked incredibly hard.

Term 2 is another busy term with lots of very exciting things to work towards!
It's sure to be another great term!

Mrs Smith & Miss Dickson

Term 2 Diary Dates

More info will be provided closer to these dates!

Tuesday 29th October

Stay, Play and Learn - Literacy
(see email for info)

Monday 11th November

PI visit to Greenock South West Library

Thursday 28th November

Stay, Play and Learn - Numeracy & Maths

Friday 6th December

Christmas Market

Tuesday 10th & Wednesday 11th

December
PI-3 Nativity

Tuesday 17th December

PI Christmas Party

Thursday 19th December

Christmas Service

Friday 20th December

Last day of term - school closes at 2:30pm

Reminders

- PE days - Tuesday and Wednesday. Children should come to school with PE kit under uniform or be able to change themselves. No Jewellery.
- Remember water bottles - with water only please.



Follow us on X

@MrsSWhinhill

@MissDicksonWPS



Literacy

- Phonics - alphabet sounds, reading and spelling cvc words.
- Writing - Character descriptions and setting descriptions.
- Reading - Learning to read using wordless books and decodable readers.
- Talking and listening - developing our dialogic skills in class discussions.
- Class focus texts: Katie Morag Stories

Numeracy & Maths

- Developing our number knowledge.
- Recognising, writing and organising numbers to 30 and beyond.
- Subitising
- Early addition - counting
- Time: Daily activities and o'clock.
- Patterns



HWB

- November focus: Achieving
- December focus: Nurtured
- PE focus: Ball skills and possession games.



Other Curricular Areas

- Science: Seasons (focus on Autumn) This will give us opportunities for outdoor learning.
- Technologies: Recognising different technology, using technology appropriately.
- Topic: Katie Morag! We will be reading the Katie Morag stories and using them to compare mainland and island life.
- RME: Welcoming a baby and Christmas.
- Expressive Arts: Music, Drama and Dance for the Nativity!

