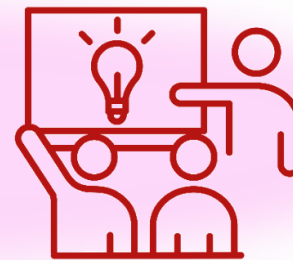




Further improve Learning & Teaching
e.g. digital learning, pupils leading learning, meta-skills



Daily Focus on Attendance
and Late-coming

Involve parents, pupils
and staff to support decision-making



Support all pupils to
take part in wider Achievement
activities

Improve the
number of As and Bs
in SQA Exams

What we plan to improve in our school this session

Further develop
an inclusive curriculum



Plan more outdoor
learning experiences

Review Senior Phase PSE
in preparation
for leaving school



Develop skills to ensure all
leavers enter a positive
destination



Track wellbeing and
put support in place for
those who need it



Support pupils not making
expected progress

Host Family Learning
workshops for S1/2/3

