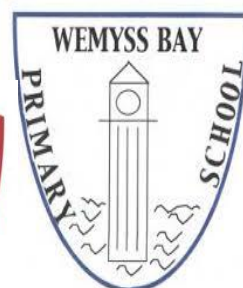


ST. COLUMBA'S HIGH SCHOOL

FAITH. AMBITION. INCLUSION. PERSEVERANCE.



ST JOSEPH'S



MOVING TO ST COLUMBA'S 2021

KEY INFORMATION FOR PRIMARY 7 PUPILS

WELCOME TO ST COLUMBA'S

PRIMARY 7 TRANSITION 2021.

Dear Primary 7,

Firstly a huge welcome to St Columba's High School.

We hope that you are excited about joining us as S1 pupils for our new school session in August 2021.

We have got lots of things in place to make sure that your move to St Columba's goes smoothly and that we know all about you before you arrive.

This booklet is designed to give you a little bit more information about St Columba's and has been designed with the help of some of our current S1 and S2 pupils to make sure you get all the most useful information.

We hope you enjoy reading it!

Mr McLean

Depute Headteacher

Miss Currie

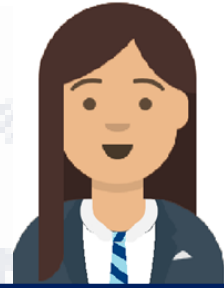
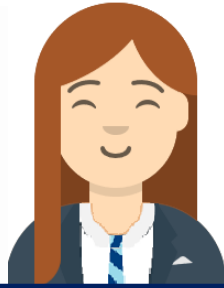
Principal Teacher of Guidance S1



FAITH. AMBITION. INCLUSION. PERSEVERANCE.

THE VALUES OF ST COLUMBA'S

PRIMARY 7 TRANSITION 2021.



FAITH

As a Catholic school we are guided and inspired by the values of the Gospel. Our faith guides our approach and our commitment to love and care for every member of our school community.

AMBITION

We encourage every child to reach their full potential and to believe in themselves. We encourage and nurture God given talents and support pupils to make full use of them.



INCLUSION

We strive to ensure that every member of our school community feels welcomed, valued and supported regardless of their circumstances.

PERSEVERANCE

We seek to equip pupils with the skills needed to keep going and remain focused during challenging times or struggles. We encourage and celebrate the efforts of learners.



FAITH. AMBITION. INCLUSION. PERSEVERANCE.

SUPPORTING YOU

PRIMARY 7 TRANSITION 2021.

Just as in primary school, there are lots of people here to help you as you settle into secondary school. As well as your subject teachers, some teachers have some extra duties to make sure that you are happy, safe and reaching your full potential.



Mrs Devine
HEADTEACHER



Mr McLean
DEPUTE
HEADTEACHER



Miss Currie
PT GUIDANCE (S1)



Mrs Cormack
PT SUPPORT FOR
LEARNING



Mrs McPate
HOME/SCHOOL LINK



FAITH. AMBITION. INCLUSION. PERSEVERANCE.

SUPPORTING YOU

PRIMARY 7 TRANSITION 2021.

Mrs Devine

HEADTEACHER



Mrs Devine is the Headteacher here at St Columba's. She is in charge of the school and making sure that the school runs smoothly. Mrs Devine is looking forward to meeting you all and is always keen to hear about the successes of S1 pupils.

Mr McLean

DEPUTE HEADTEACHER

Mr McLean is one of three Depute Headteachers at St Columba's and among many other things, he has responsibility for both S1 and S2. You will get to know Mr McLean very quickly as he will be working closely with teachers to make sure S1 are meeting our high standards of effort, behaviour and achievement.



FAITH. AMBITION. INCLUSION. PERSEVERANCE.

SUPPORTING YOU

PRIMARY 7 TRANSITION 2021.

Miss Currie

GUIDANCE TEACHER



Every pupil in St Columba's has a Guidance Teacher. This is a teacher that has responsibility to monitor your attendance, classwork and progress, as well as support you settle in and make sure that you are fully supported. The Guidance Teacher for S1 is Miss Currie and she will work closely with Mr McLean to make sure that you settle in quickly.

Mrs Cormack

PRINCIPAL TEACHER SUPPORT FOR
LEARNING

Sometimes, people need a little extra support in classes and in assessments to make sure that they are successful. Mrs Cormack is our Principal Teacher of Support for Learning and she has the important job of putting all of these arrangements in place. Mrs Cormack will work closely with your P7 teachers to make sure that you have everything you need when you move to secondary school



FAITH. AMBITION. INCLUSION. PERSEVERANCE.

SUPPORTING YOU

PRIMARY 7 TRANSITION 2021.

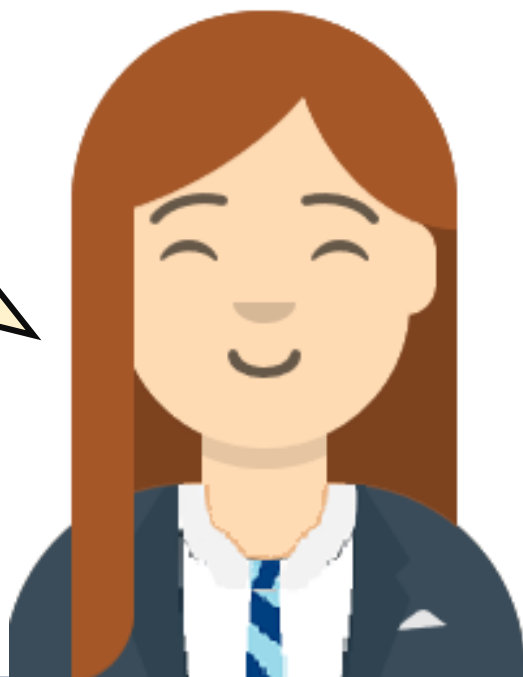
Mrs McPate

HOME LINK WORKER



We are very fortunate to have the support of Mrs McPate. Mrs McPate works with pupils across our school to help them feel safe and happy at school. Mrs McPate knows that moving to secondary school can be scary and she will work with groups of pupils to help them through and make sure that they are enjoying their new school.

Every member of staff at St Columba's is here to help and support you.



FAITH. AMBITION. INCLUSION. PERSEVERANCE.

SOME ANSWERS TO YOUR QUESTIONS

PRIMARY 7 TRANSITION 2021.

We know that you will have lots of questions about your transition to St Columba's. Here, we will take some time to answer some common questions.



I have dyslexia and get support for this in class and extra time in tests. Will this be the same in St Columba's?

An excellent question. Staff from St Columba's led by Mrs Cormack will be speaking to your Primary 7 teachers to find out all about you and the support that you need. This means that we will do everything possible to make sure you get the support you need when you arrive in St Columba's

I am worried that the work will be too hard. How will teachers at St Columba's know what level I am working at?



Again, we will discuss all of this information with your Primary 7 teachers and make sure that all of your class teachers know what level you are working at. The work you do in S1 should feel like a natural progression from Primary 7.

FAITH. AMBITION. INCLUSION. PERSEVERANCE.

I am really worried that I won't know anybody in my class. How will you make sure this doesn't happen?



When we speak with your Primary 7 teachers we will ask them who you work well with and get on with. We will do everything we can to make sure that you are in classes with these people. There will also be lots of new people to meet from other schools. This is one of the most exciting things about starting S1.

I think that I am going to get lost. Will I get into trouble if it makes me late for class?



Even teachers get lost when they start working in a new school so do not worry about this. To help you out in the first week or so we will assign you some guides to help your classes move around the building.

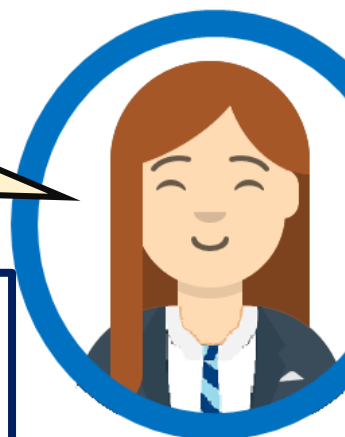
I am worried that I will get bullied. Who should I go to if this happens?



Thankfully, bullying behaviour at St Columba's is very rare. If it does happen, then you report it to any member of staff or one of our Anti-Bullying Ambassadors. Together, we will then be able to support you and put a stop to it.

What will happen at our induction days?

We hope to arrange for you to visit us at school over a couple of days in June 2020. During these days you will have the opportunity to follow a timetable and experience learning across lots of different subject areas.



BECOMING ST COLUMBA'S

PRIMARY 7 TRANSITION 2020.

Over the next few pages, we will look at some of the most important things that you will need to know about before you start S1.

The structure of the school day including your timetable, organising your belongings, school lunches and the school uniform.



FAITH. AMBITION. INCLUSION. PERSEVERANCE.

THE SCHOOL DAY

One of the biggest differences that you will notice when you start secondary school is the structure of the school day.

Unlike in primary school, you will have many different classes and different teachers. Each day, you will follow a timetable and move from class to class. We call these classes periods, and you will have as many as 7 periods each day.

Here is a guide to the structure of the school day.

Registration	8:50-9:00
Period 1	9:00-9:50
Period 2	9:50-10:40
Interval	10:40-10:55
Period 3	10:55-11:45
Period 4	11:45-12:35
Lunchtime	12:35-1:15
Period 5	1:15-2:05
Period 6	2:05-2:55
Period 7 (Monday and Tuesday)	2:55-3:45

FOLLOWING A TIMETABLE

One of the biggest changes that you will need to adapt to is following a timetable each day and making sure that you know what classes you have.

Pupils need to:

- Know how the timetable works
- Know what lessons you have each day



THE SCHOOL DAY

Here is an example of a secondary school timetable. As you can see, each day you will have a variety of different subjects. This means that you will need to be organised and make sure that you bring the right equipment with you each day.

With many different classes, you will meet a range of different teachers. You will also have a registration teacher who you will meet with each morning.

	Reg	Period 1	Period 2	Break	Period 3	Period 4	Lunch	Period 5	Period 6	Period 7
Monday	Reg			Break			Lunch			
Tuesday	Reg			Break			Lunch			
Wednesday	Reg			Break			Lunch			
Thursday	Reg			Break			Lunch			
Friday	Reg			Break			Lunch			

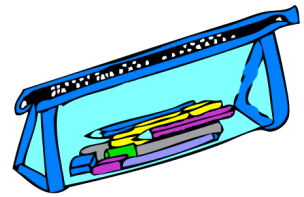
ORGANISATION

In Primary School, most of the equipment that you need is kept inside the classroom.

Secondary School will be very different, and you will be expected to have your own pencils and pens with you in your bag. You should carry these to each class that you attend. A pencil case would be very useful to you.



You should also ensure that you look carefully at your timetable each day to make sure that you have the correct jotters and textbooks for your classes each day. This is especially important when making sure that you carry your PE kit on the correct days.



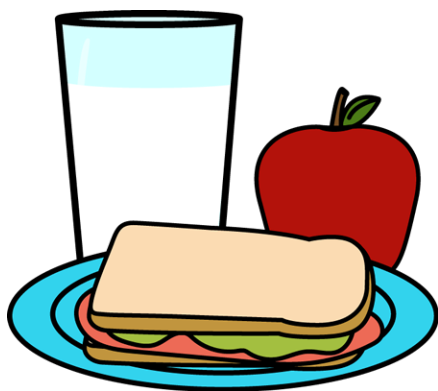
SCHOOL LUNCH

We have a large Dinner Hall and S1 pupils use the Assembly Hall to eat their lunch.

The school lunches are very popular (the Cajun chicken pasta is a particular favourite among staff and pupils!)

School lunches can be purchased through our cashless catering system. There are machines in the canteen where you can add money to your account.

S1 pupils are not allowed to leave the school building during interval and lunchtime.



UNIFORM

All pupils at St Columba's are expected to wear full school uniform at all times. We will be working closely with your parents to make sure these expectations are upheld.

The uniform for S1 pupils is as follows:

- Blazer
- White Shirt/Blouse
- Black Trousers/Appropriate Black School Skirt
- School Tie
- Black Jumper
- Black school shoes/triple black trainers featuring no obvious or coloured logos/branding.
- A PE Kit when required



Black formal trousers or skirt.

White Shirt

School tie

Black shoes or trainers



All Black jumper/ school sweatshirt or cardigan.

UNIFORM

The following items are **not** part of our school uniform and **should not** be worn.

- Trainers with any obvious colour or branding
- Tracksuit tops or hoodies
- Tracksuit trousers
- Grey knitwear



Trainers with any obvious colour or branding



Tracksuit Trousers



Denim/Skinny Jeans



Grey knitwear



Branded Hoodies/
Tracksuit tops



KEEPING IN TOUCH

PRIMARY 7 TRANSITION 2021.

HERE TO HELP

We look forward to welcoming you all for the start of S1.

We will keep in touch with you over the next few months to make sure that you have everything that you need for starting secondary school.

In the meantime, we encourage you to visit the school website and Twitter pages to get a flavour of life at St Columba's



COMMUNICATING WITH YOU

SCHOOL WEBSITE

<https://blogs.glowscotland.org.uk/in/schswebsite/>

SCHOOL TWITTER

[@ stcolumba](#)





Becoming St Columba's

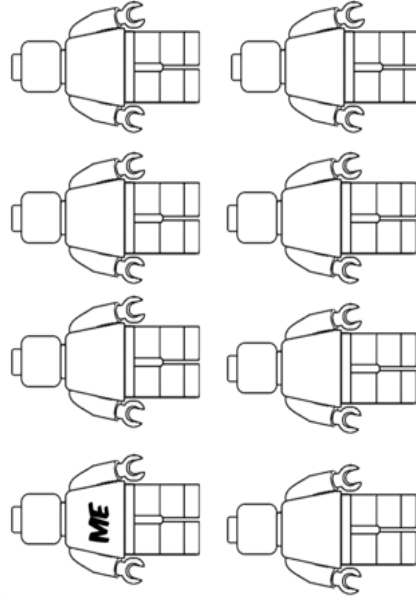
ALL ABOUT ME!



My Name is:

My Primary School:

The members of my family

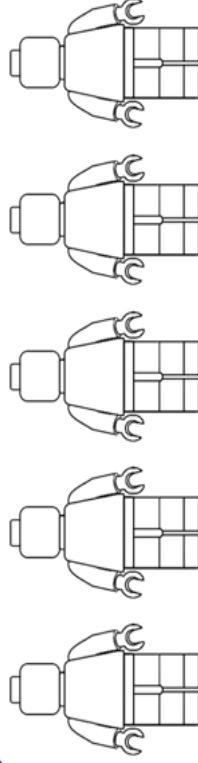


DRAW YOUR FAMILY
(THERE IS EVEN SPACE FOR YOUR PETS)

Things I am good at ...



My Closest Friends



Remember to note their names!

My hobbies and interests



Things in life that I like



Things in life that I dislike



I am looking forward to St Columba's because...

