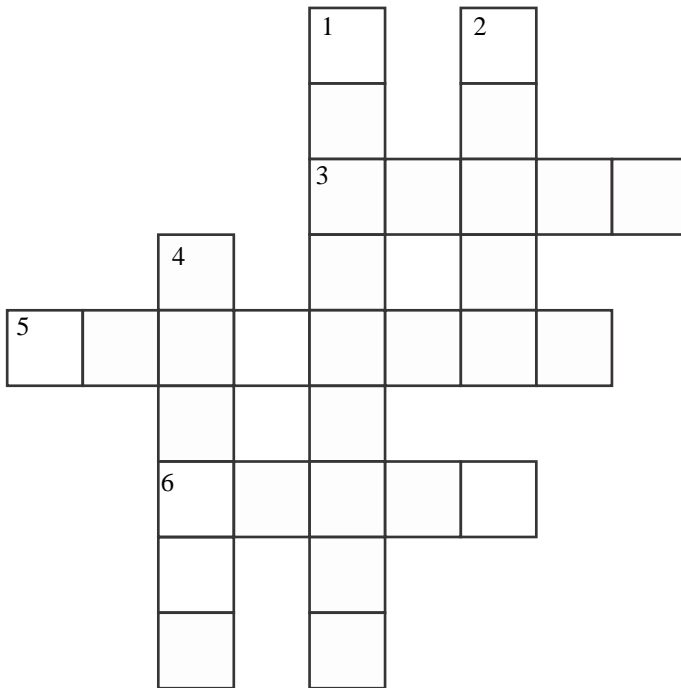


Microscopes and Slides.

Homework 1

Name _____ Class _____ Date _____

1 Fill in the crossword grid by answering the clues.



Across

3 Slides and coverslips are made of this.

5 The name of the thing we want to look at under a microscope.

6 What you want to look at under a microscope is put on one of these.

Down

1 What a microscope does.

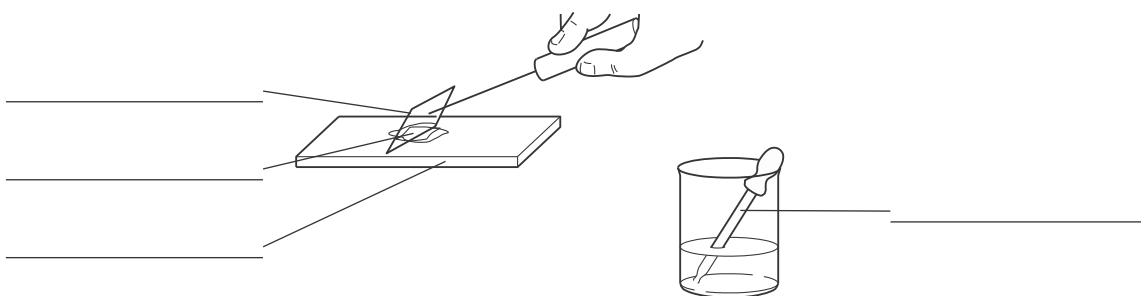
2 Part of a theatre and part of a microscope.

4 A microscope has two types of these.

6

2 a The drawing shows a coverslip being put in place on an animal cell. Label the parts using the words in the box.

coverslip methylene blue slide specimen



2

b What do we use a coverslip for? Tick two reasons.

☐ to squash thick specimens

☐ to hold the specimen in place

☐ to stain the specimen

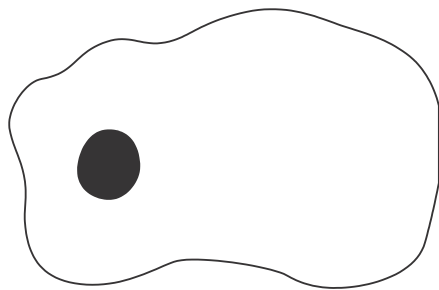
☐ to stop the specimen drying out

☐ to magnify the specimen

☐ to heat up the specimen

1

3 a Draw lines from the words in the box to the correct part of each cell. The words can be used more than once or not at all.



This is _____ cell.

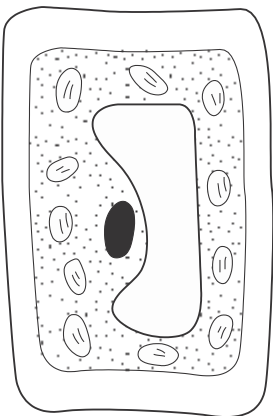
- cell wall

cell membrane

chloroplasts

cytoplasm

nucleus vacuole



This is _____ cell.

5

b In the blank space in the sentence underneath each diagram, fill in the words ‘a plant’ or ‘an animal’.

1

4 Draw lines from the parts of cells to their functions. The first one has been done for you.

Part of cell

Cell membrane
Chloroplasts
Nucleus
Cell wall
Cytoplasm
Vacuole

Function

Tells the cell what to do
Keeps the cell together and controls what goes into and out of the cell
A jelly-like substance in which many of the cell’s activities happen
A storage space filled with sap
Green discs that allow the plant to make food by photosynthesis
Supports the cell

5

Body Systems Homework 2

1. There are around 50 different types of specialised cells in the human body.

Name 1 specialised cell and state its function in the body and how its structure is different (looks different)

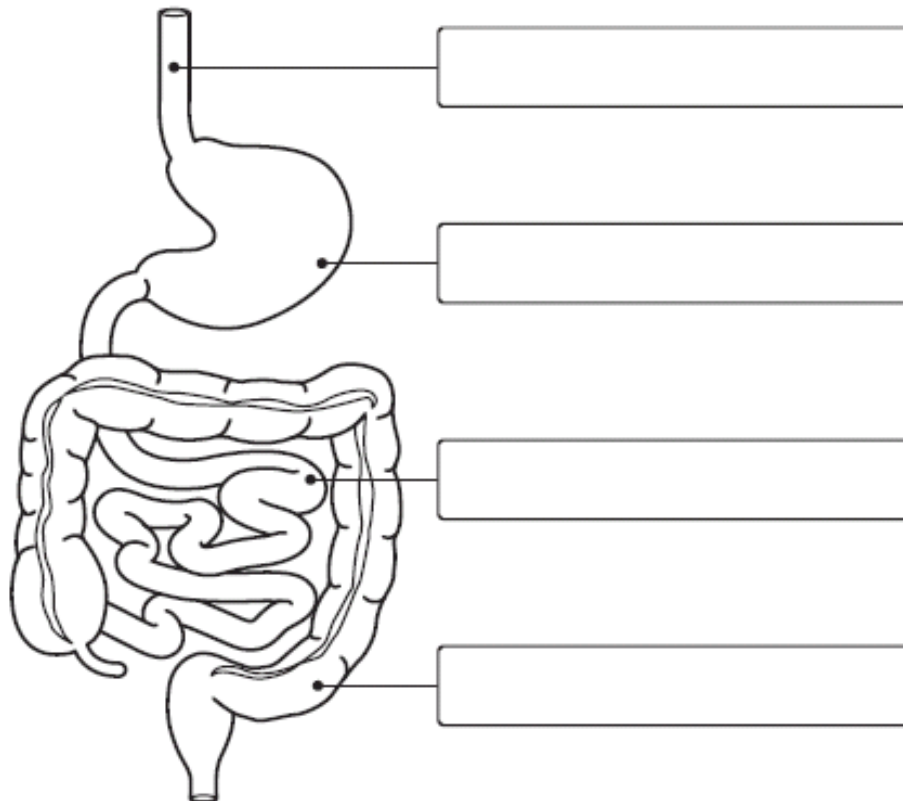
Cell _____

Structure

Function

2.

2. The diagram below shows the digestive system.



4.

- a. Put the correct label in each box.

☐ Biuret solution

☐ copper sulphate solution

☐ starch solution

☐ iodine solution

☐ Optrex®

☐ nitric acid

b) What will happen to this chemical if it comes into contact with starch?

1.

4. Match the description with the body part.

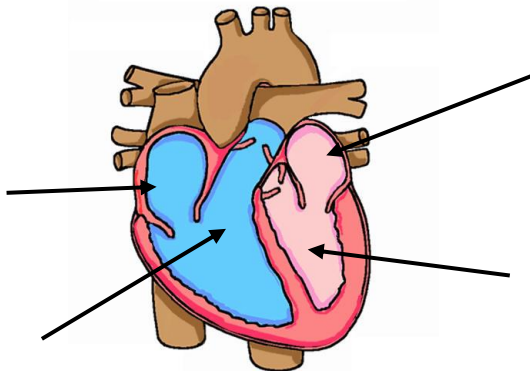
Liver	Where water is absorbed
Small Intestine	Produces Bile
Large Intestine	Where products of digestion are absorbed

2.

Total /10

Body Systems Homework 3

1. Label the 4 chambers of the heart:



4.

2. Why is one half of the heart usually coloured in red and the other half blue?
-
-

3. What do red blood cells do in the body?
-
-

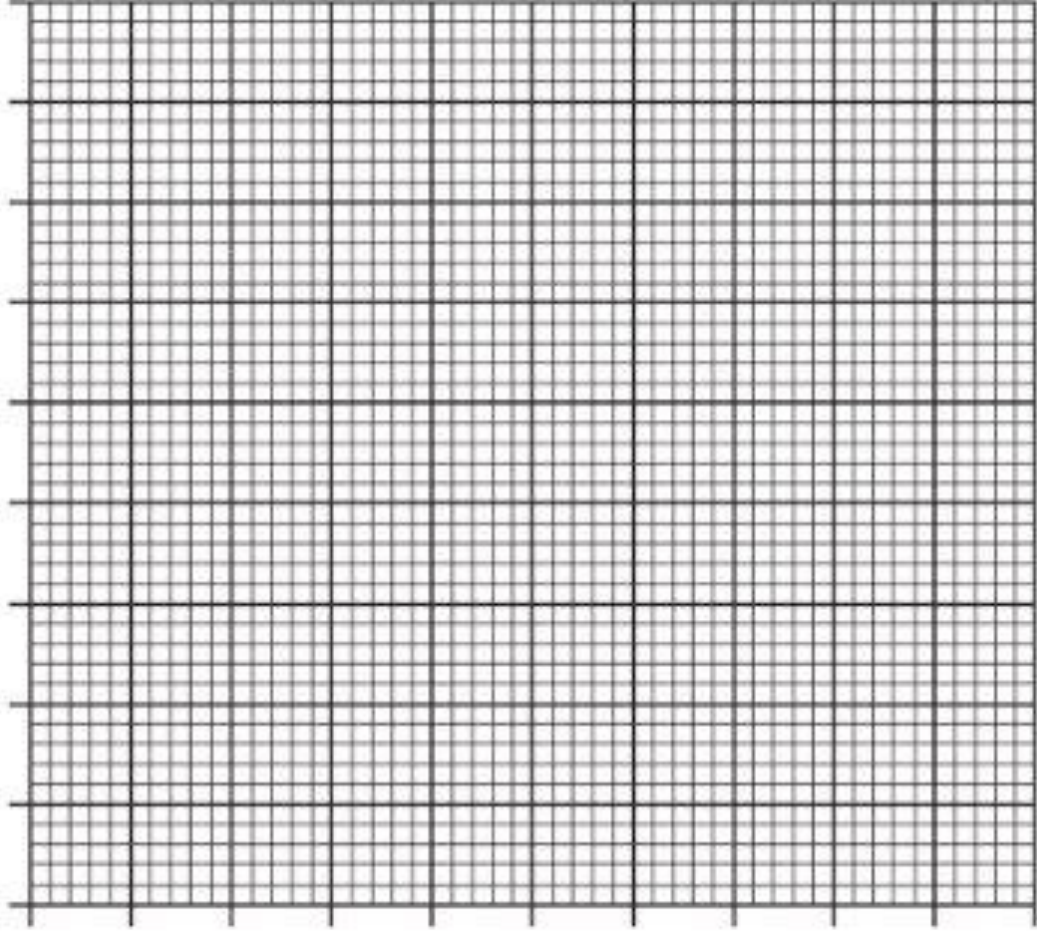
1.

4. Draw a line graph to show your pulse rate after exercise. (You will need graph paper).

1.

Time after exercise (minutes)	Beats per minute
0	110
5	92
10	75
15	68

4.



Total	/10
-------	-----