

Positive Pathways Evening
– S2 into S3 Options
Information Session

Thursday 11th January, 2024



Format



Our Vision



Our Curriculum



Our Qualifications



**A COMMUNITY OF LEARNING
AND FAITH, BUILT UPON
LOVE AND AMBITION**

NOTRE DAME HIGH SCHOOL

Belief



We aspire to live by the Gospel Values, each and every day.

We believe in ourselves and in each other.

We support and encourage each other to be the best versions of ourselves.

Perseverance



We strive to develop our God-given talents to the best of our abilities.

We respond to challenges with determination and resilience.

We are confident in seeking support to help us achieve and progress.

Respect

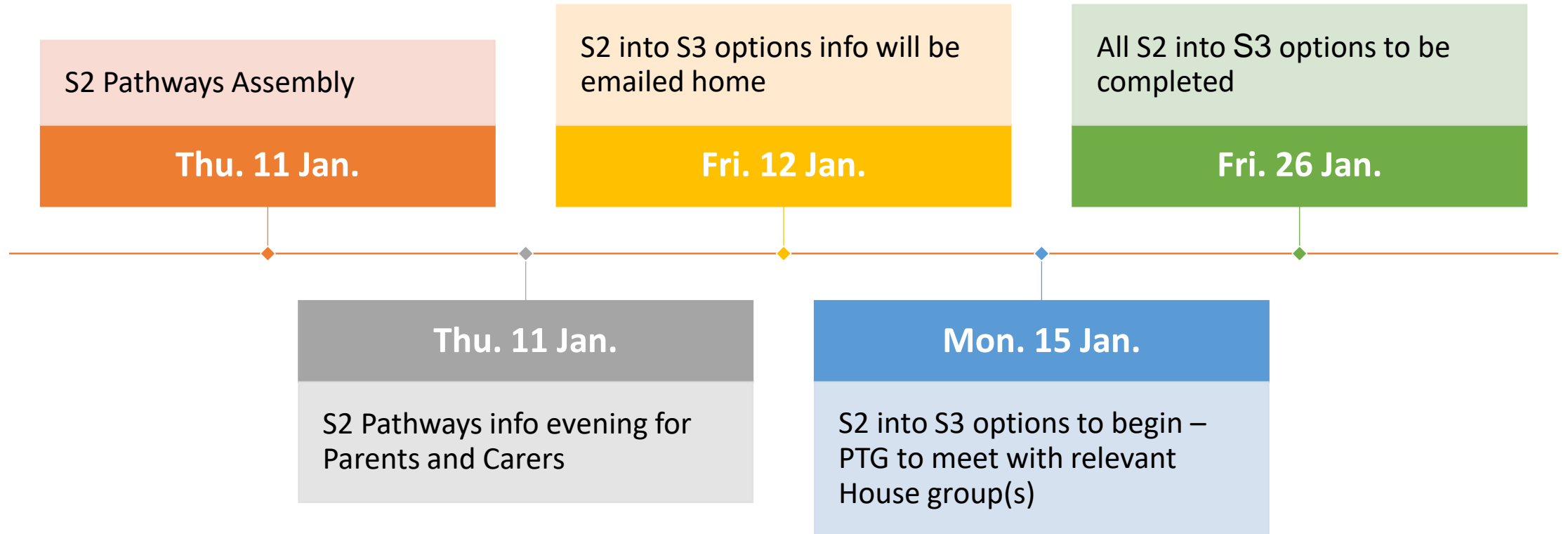


We are kind, caring and respectful of ourselves and others.

We value positive relationships and they are at the centre of all that we do.

We are an important part of our school and wider community and take pride in it.

Timeline



CURRICULUM



Curriculum Rationale

'Now, more than ever, schools must be places where young people learn and develop a rich knowledge, yes, but also the skills to thrive in a future which is increasingly unpredictable.'

Education Scotland A Key to
Successful Curriculum Design



S3 Curriculum

ALL S3 LEARNERS STUDY ENGLISH
AND MATHS (4 PERIODS)



```
graph TD; A[ALL S3 LEARNERS STUDY ENGLISH AND MATHS (4 PERIODS)] --> B[6 CHOICES WITHIN EACH CURRICULAR AREA (3 PERIODS)]; B --> C[1 'FREE CHOICE' OPTION (3 PERIODS)]; C --> D[1 OR 2 LEADERSHIP ACADEMY OPTIONS (3 PERIODS PER WEEK)]; D --> E[RE/PE/PSE - 2 PERIODS EACH];
```

6 CHOICES WITHIN EACH
CURRICULAR AREA (3 PERIODS)

1 'FREE CHOICE' OPTION (3
PERIODS)

1 OR 2 LEADERSHIP ACADEMY
OPTIONS (3 PERIODS PER WEEK)

RE/PE/PSE – 2 PERIODS EACH

S3 Leadership Academy

'Schools' options for young people at this early stage have to balance what they feel young people need to know, with opportunities and the time and space for them to pursue their interests and to experience new areas of interest, too.'

Educ Scotland A Key to Successful Curriculum Design



S3 Leadership Academy

- ABRSM
- Bakery
- Barista Skills
- CAM Enterprise
- Computer Games Development
- Criminology
- DJ Skills
- Horticulture
- Musical Theatre
- Personal Finance
- Psychology
- Rock band
- Sports Leader



Let's hear from
our current S3
Leaders



Skills

- Learning
- Life
- Work



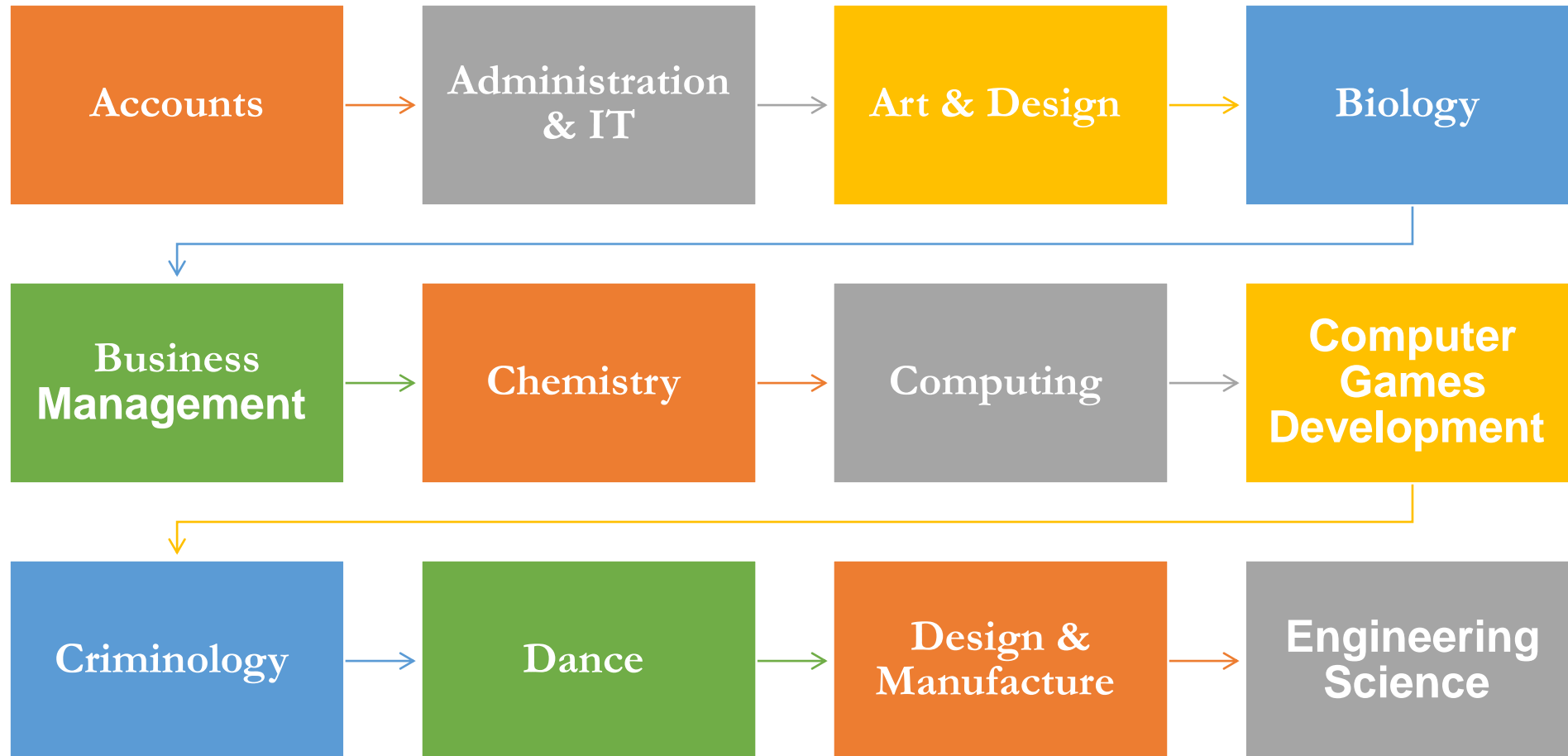


CURRICULAR AIMS:

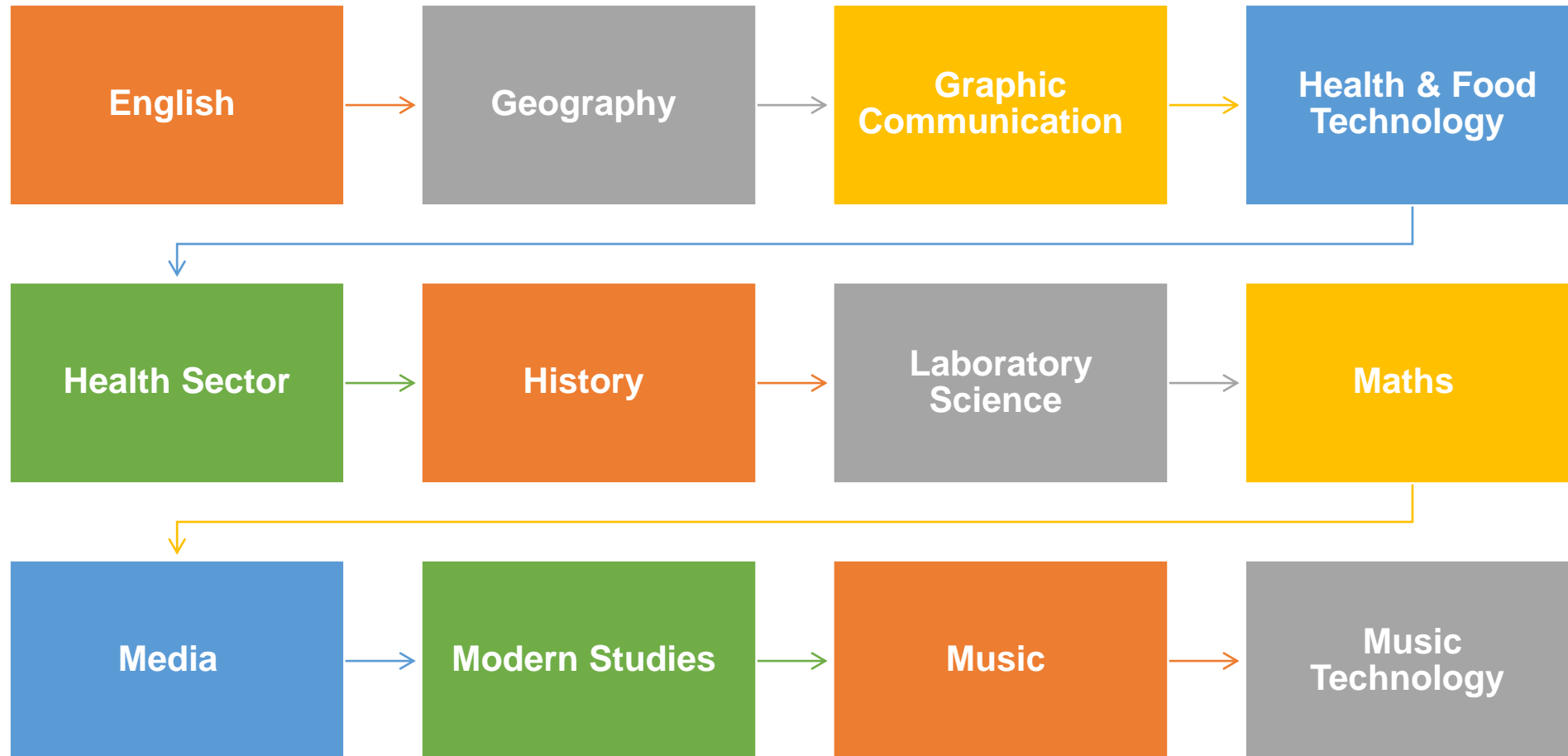
- structured pathways
- progression
- positive +
sustained destinations.



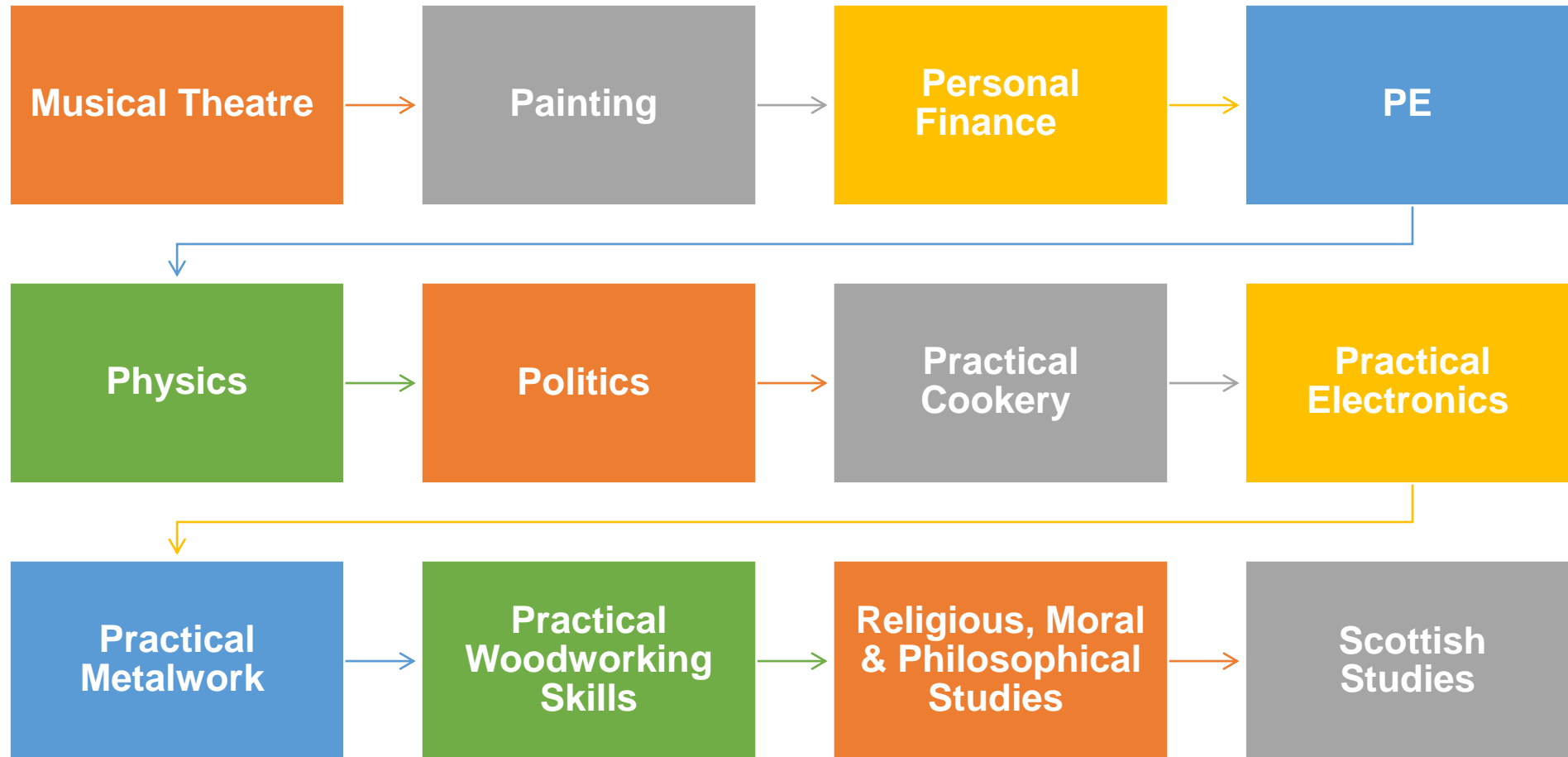
Our SP Curriculum



Our SP Curriculum



Our SP Curriculum



POSITIVE AND
SUSTAINED
DESTINATIONS





EMPLOYMENT



FOUNDATION
APPRENTICESHIP



GRADUATE
APPRENTICESHIP



COLLEGE



UNIVERSITY



COMPETITIVE

5

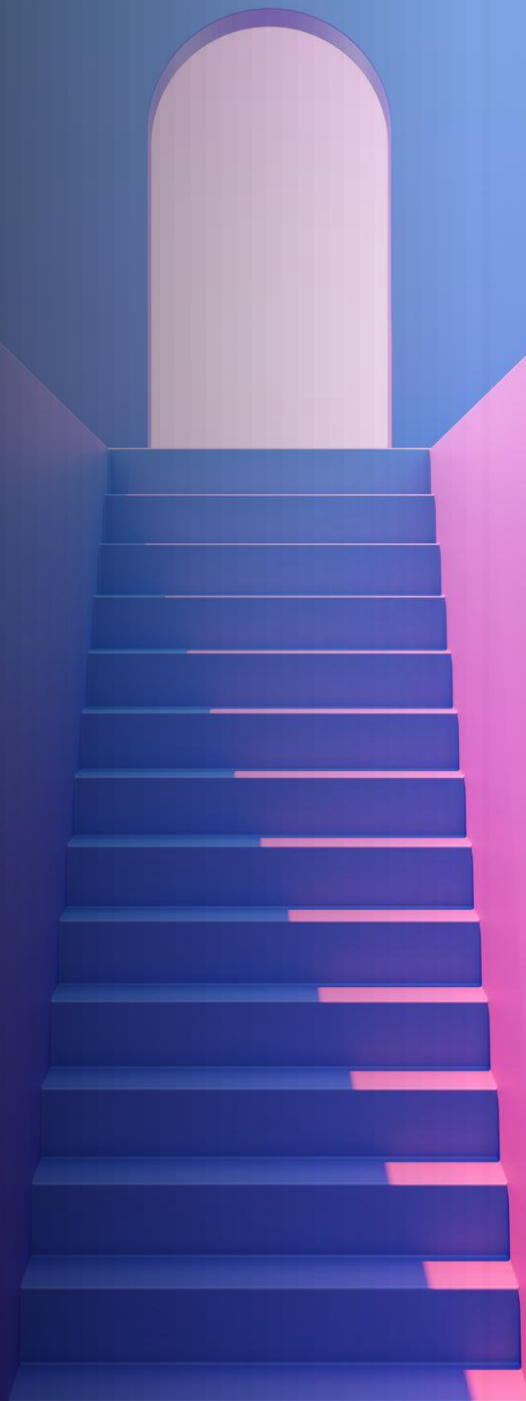




NoWrongPath



GATEWAY SUBJECTS



HIGHER ENGLISH



MATHS (N5)

$D(x) = 2 + 3 + 4.31447$

$\sqrt{a^2 + b^2} = x^2 \cdot x$

$x^2 + y^2 = ab + 4c$

$c(x, y) \begin{cases} xy = 2 \\ cx - cy = 25^2 \\ 2\pi = c \end{cases}$

$24 + \frac{x}{y} + \frac{2^2 + 3^2}{c} + \frac{1}{x}$

men = 984 + n^{20}

$x = 9.22$

$\sum_{x=2}^{n=14} N_{50} \cdot x = \frac{1}{2} [984 + x \cdot 9]$

$x \leq 54$

$\beta = 9 + x^2 + y$

$\begin{bmatrix} 010112 \\ 010002 \\ 011002 \end{bmatrix}$



$y = g(x)$

Secant Lines

$$f'(x) = \lim_{h \rightarrow 0} \frac{f(x+h) - f(x)}{h}$$
$$f(x) = \lim_{h \rightarrow 0} \frac{(x+h)^2 - x^2}{h}$$
$$= \lim_{h \rightarrow 0} \frac{x^2 + 2xh + h^2 - x^2}{h}$$
$$= \lim_{h \rightarrow 0} \frac{2xh + h^2}{h}$$
$$= \lim_{h \rightarrow 0} h(2x + h)$$

$g(x+h) - g(x)$

$$= \lim_{h \rightarrow 0} h(2x + h)$$

Two Maths Pathways

- Maths
- Applications of Maths

5

UG 2024 EDUCATION WITH PRIMARY TEACHING QUALIFICATION MEduc

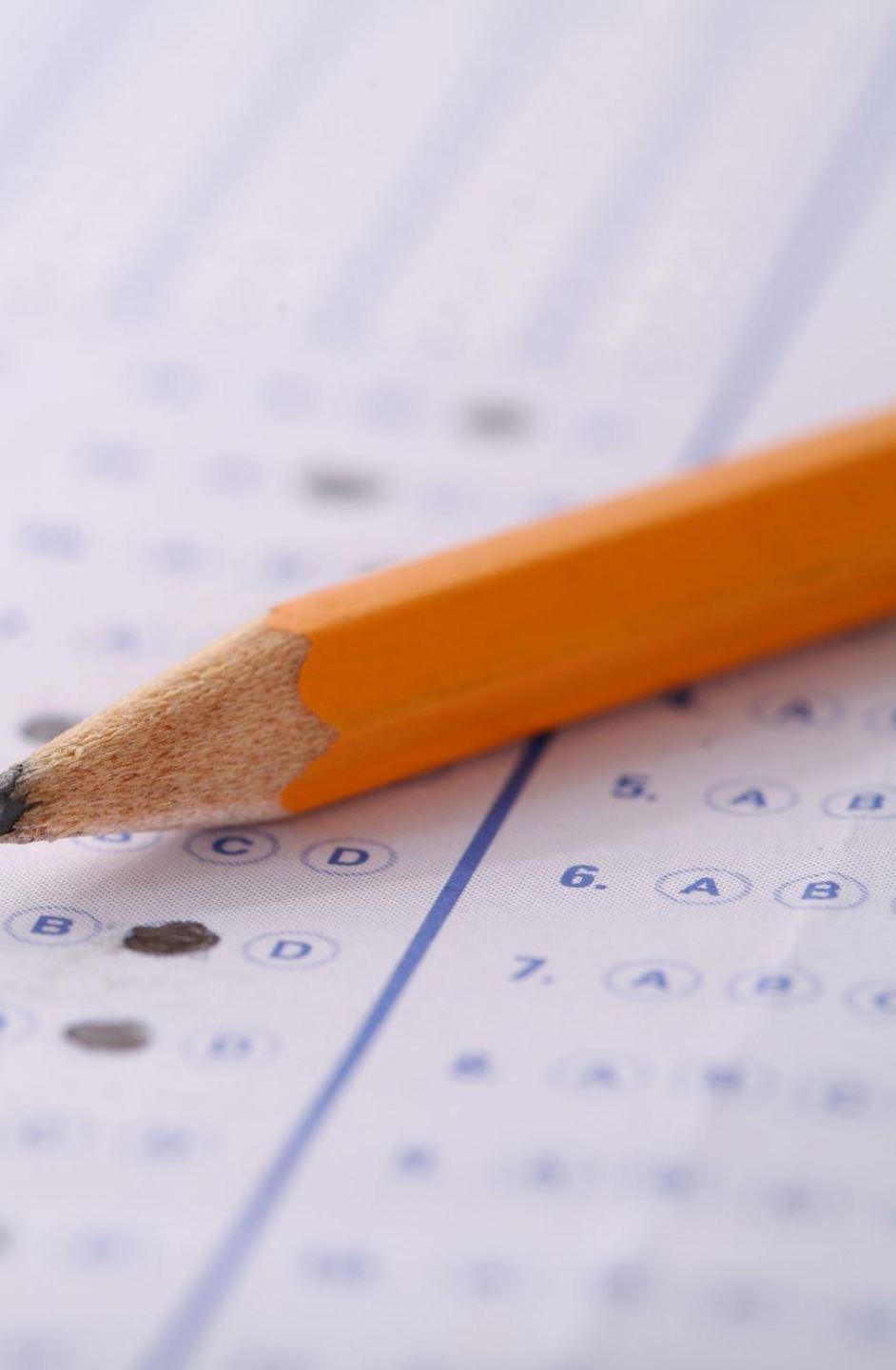
Summary of entry requirements for Education with Primary Teaching Qualification

SQA Higher entry requirements (by end of S6)

- ABBB is the minimum requirement from S5 to be reviewed for an S6 offer
- Offers are not guaranteed to applicants who meet the minimum from S5
- Typically offers will be made at AAABB by end of S6. B at Advanced Higher is equivalent to A at Higher
- Additional requirements: Higher English and National 5 Mathematics or Application of Mathematics at Grade B
- Interview**.



SQA Higher adjusted entry requirements* (by end of S5 or S6)



University of Strathclyde: Primary Teaching

Highers

Standard entry requirements*:

- 1st sitting: AAAB
- 2nd sitting: AAAAB

(Higher English B, and Maths/ Applications of Mathematics National 5 B, or equivalent).

**In addition to Higher English, at least one Higher should come from the following list below.

Minimum entry requirements***:

- 1st sitting: AABB
- 2nd sitting: AAABB

(including English B and Maths/ Applications of Mathematics National 5 B)

University of Strathclyde: Law

Highers

Standard entry requirements*:

- **1st sitting:** AAAAB
- **2nd sitting:** AAAABBB

(Higher English B, Maths/Applications of Mathematics National 5 C, or equivalent)

Minimum entry requirements**:

- **1st sitting:** ABBBB
- **2nd sitting:** AABBBB

(English B, Maths/Applications of Mathematics National 5 C, or equivalent)



Higher Apprentice Naval Ships Project Management Glasgow

Glasgow

Naval Ships

Project management

Higher apprenticeship

[← Back to search](#)

[Share](#) 

[Apply now](#)

Qualification requirements

5x National 5s including English & Maths or Applied Maths at grade C or above and 2x Highers one of which should be English at Grade C or above.

5

A Word of Caution



Not all of the subjects on the previous slides will necessarily be part of our timetable – this is dependent on uptake/demand

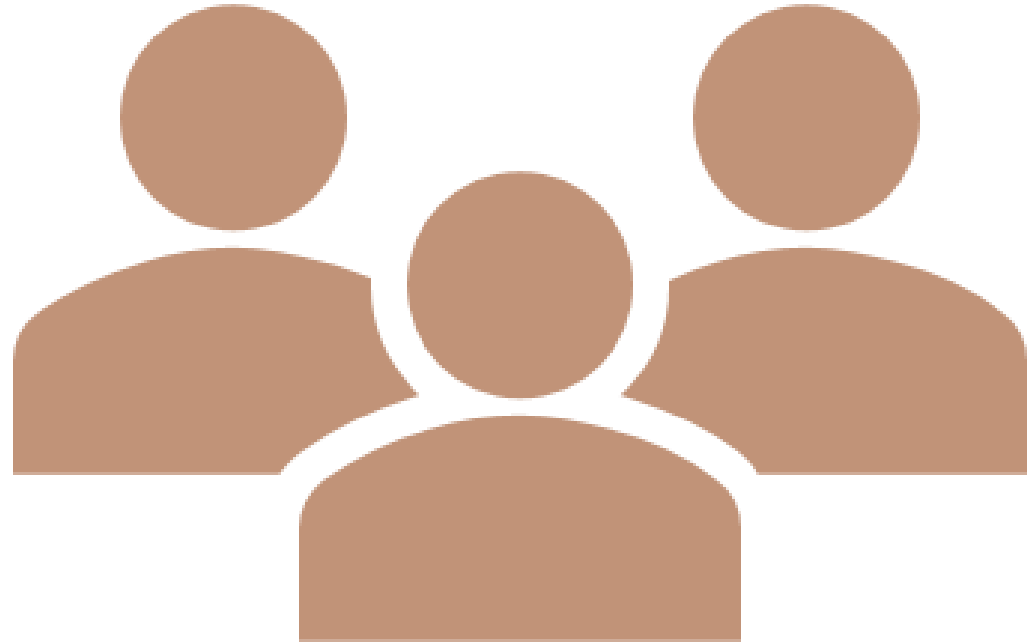


Not all of the Leadership Academy options will necessarily form part of the next year's curriculum



Not every combination of subject will be available. Again, this will be dependent on uptake/demand

Meet the
Departments



Q & A

