

WELCOME TO

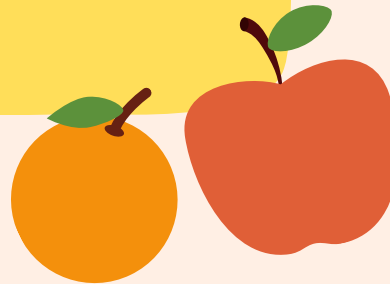
P4/3
TERM 2

Hi there!



I'm Mr Marshall. I am the Primary 4/3 class teacher! This leaflet contains all the information you will need about what we will learn this term.

We have fruit o'clock everyday - please pack a daily piece of fruit or vegetable.



Need to contact me?

Contact the school office in the first instance and follow the school on Twitter/X @MoorfootPr. You can follow me on Twitter @MPSP4_3

Term DATES

- 1 16th August - 11th October
- 2 22nd October - 20th December
- 3 6th January - 4th April
- 4 22nd April - 27th June

Weekly SCHEDULE

M

T

PE Kit (P3)
Swimming (P4)

W

PE Kit

T

F

WELCOME TO

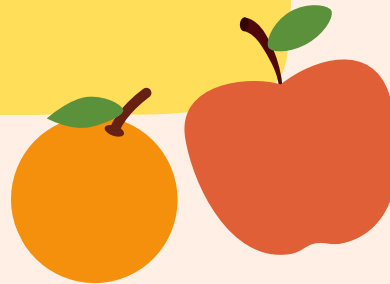
P4/3
TERM 2

Hi there!



I'm Mr Marshall. I am the Primary 4/3 class teacher! This leaflet contains all the information you will need about what we will learn this term.

We have fruit o'clock everyday - please pack a daily piece of fruit or vegetable.



Need to contact me?

Contact the school office in the first instance and follow the school on Twitter/X @MoorfootPr. You can followw me on Twitter @MPSP4_3

Term DATES

- 16th August - 11th October
- 22nd October - 20th December
- 6th January - 4th April
- 22nd April - 27th June

Weekly SCHEDULE

M

T

PE Kit (P3)
Swimming (P4)

W

PE Kit

T

F

CLASS LEAFLET TERM 2

P4
TERM 2

Listed below are the main areas of learning for your child's class in term 2. As a composite class, P4/3 will cover the same concepts, but may access these at different stages. Pupils will be given the right support to match their learning needs and trajectories

MATHS AND NUMERACY

- Throughout the school year P4/3 will develop their mental maths strategies and revise times tables. This term we will focus on
- Addition and Subtraction
- Symmetry
- Multiplication and Division



LITERACY AND ENGLISH

- Cursive Handwriting
- Phonics and spelling.
- Class Novel - The Twits
- Writing - Report and Recount.
- Dictionary skills
- Talking and listening

- Language features:
 - sentence openers
 - connectives
 - proof reading and up-levelling
punctuation: capital letters, full stops,
 - commas, speech marks,
 - apostrophes, question marks,
 - exclamation marks.
 - figurative language: similes, metaphors
- Reading Strategies - skimming and scanning, inference, summarising, use of punctuation when reading aloud, adding expression, control of pace, and fluency when reading aloud.



LITERACY AND ENGLISH



HEALTH AND WELLBEING

- PE - Gymnastics + Swimming
- Friendships, feelings and emotions.
- How to look after our bodies.



INTERDISCIPLINARY LEARNING

- Inventions and Inventors Topic
- Music e.g. Notation and Performance
- Expressive Arts
- Science e.g. Forces, Phases of the Moon and Seasonal Changes



ICT

- Coding
- Data Analysis
- Word Processing

LANGUAGE FOCUS

- French
- BSL

