

Using Glow for learning in School or at home

MARCH 2020

What is Glow?

Across Inverclyde, every pupil is given access to a set of digital resources which allow them to create work online, collaborate with their peers and to communicate with their teachers. This is called Glow. The online web based resource also allows the pupils to have access to these resources on their home computers and if required, from their mobile devices. The package of resources also gives them access to Microsoft Windows Office 365 applications such as Excel, Word, Forms, Sway, PowerPoint and Teams. These applications can also be downloaded to their home computers. Each child has also a Glow email account which allows them to safely communicate with others within their class and school.



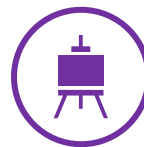
How does your child access Glow?

As Glow is all based online, your child just needs to visit the website:

<https://sts.platform.rmunify.com/Account/SignIn/glow>

The school will have already issued to each child their user name and password that is required to access their account. If they cannot remember these details, they can find this out at the school office or from their class teacher.

They can write this information on the spaces provided here.



User details (Keep secure)

User Name	
Password	

The email address for each person takes the same basic format:

username@glow.sch.uk



"Effective communication requires more than an exchange of information. When done right, communication fosters understanding, strengthens relationships, improves teamwork and builds trust."

Downloading Office 365.

When you are logged on to Glow you will be able to find on the school launch pad a tile which will direct you the Microsoft site where a download of Office 365 is available. It can be Downloaded to iOS, android and windows devices.



Please note that some of the individual applications such as OneNote, Sway and Teams are also freely available for phones.



▶ **Glow Teams** is part of the package that is also available. In order to be able to use fully this application your class teacher(s) will be required to set up a group for your learning activities. Teachers can set up learning resources, communicate directly with individuals and/or groups and set particular assignments to each. It is also possible to provide assessments and feedback on the learning activities.



▶ **Digital Safety:** Within Inverclyde schools, online activity is monitored and carefully filtered to ensure that our staff, children and young people are kept safe. Monitoring is also part of the Glow, so pupils need to use it responsibly. Any individual not using the resources properly may find that their access to these resources is blocked.



Should your child have any difficulty accessing Glow, then they should speak in the first instance to their school teacher. Inverclyde Council unfortunately cannot provide support for individual's home computers or mobile devices.