



November/December 2025

Welcome Hillend Family

We would like to welcome you all to the Team Hillend Family.

We cannot wait to build great relationships/partnerships with you and be part of your child's learning journey. Your children have settled in so well- we are very proud of them all 😊.

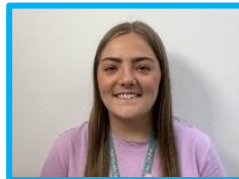
Staff Changes/updates



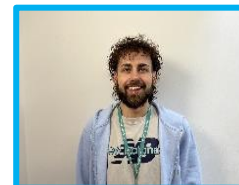
Our Simone has started her maternity leave and we're so excited to share that she's has now had her bundle of joy – [Baby Luca!](#)



We would like to welcome Judith to #TeamHillend. Judith was successful for our Maternity cover EYECO post. You will find Judith in our Snowdrops Room.



Our Allison has now started her maternity leave and we're so excited to share that she's has now had her bundle of joy - [Baby Olivia!](#)



Kieran who is currently our Learning Assistant has been successful in gaining Allison's Maternity post.



We are pleased to announce that Fiona has been successful in securing our Equity & Excellence Lead position within Hillend. Congratulations, Fiona, on this fantastic achievement!

Jewellery

Please ensure your child does not wear jewellery to nursery. Under Inverclyde Council's Health and Safety policy, any child wearing earrings, necklaces etc. cannot participate in outdoor or physical play. If you have any questions please do not hesitate to call for further information.

Medication

Please note that although we are happy to give your child medication this ***must have a pharmacy-dispensing label stating your child's name and dosage on the packaging.***

You will also require to complete a "Medication Passport" booklet, this needs to be signed by a parent. You will get this form from a member of staff. We also ask if you have to leave medication in your child's bag please inform staff as this **MUST** be locked away and not left in child's bag within cloakroom.

Car Park

Please avoid parking in the disabled space or the bus drop off point when picking up and dropping off your child – unless this has been discussed with the management team.

We ask parents if they could avoid parking in the drop off and pick up area between the hours of 8am-9.30am – 12.20pm and 4.45pm – this will support the bus drivers parking & yourselves.

Attendance Matters

Regular attendance at nursery has a positive impact on your child's learning and development. We follow Inverclyde Council's procedures for managing attendance.

If your child is unable to attend due to illness or an appointment, please contact the nursery on 01475 715710 to let us know. If we do not hear from you, we will phone to ensure everything is okay — so please help us by keeping us informed.

We kindly ask that you let us know in advance of any planned holidays or appointments whenever possible.

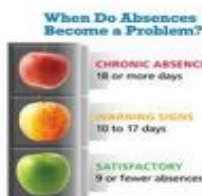
Please also make sure your contact information is up to date. If someone other than yourself is collecting your child, please inform a member of staff and ensure they know your child's password.

This is for the safety and security of both you and your child.

| Attendance Statistics | % of Children with 80%+ Attendance |
|-----------------------|------------------------------------|
| August 25 | 85% |
| September 25 | 74% |
| October 25 | 67% |



**Help Your Child Succeed
Build Good Attendance Habits Early**



We Are Here to Support All Families

Please call the nursery on the first day of absence to let us know your child is unwell. If we do not hear from you, we will call and message everyday. We may also call your emergency contacts. If we cannot contact you for more than 3 days, we may seek assistance from other agencies such as your health visitor, this is a safeguarding measure.

Did you know that we monitor attendance every month to identify families who may need support?

If your child's attendance falls below 90% we will have a chat with you and offer any support we can to help you ensure your child attends.

We understand that each family has individual circumstances and we will work with you to support good attendance at nursery.

DID YOU KNOW?

- Starting nursery with good attendance can set up good attendance habits for life
- Missing 10% or about 2 days per month can make it harder for children to learn

Attending nursery can make children feel good about education and themselves. Start good attendance habits early so that your child learns that going to school on time everyday is important

WHAT YOU CAN DO

- Set up regular bedtime routines
- Lay out clothes the night before
- Have a back up plan for emergencies of who will bring your child to nursery
- Try to book non-emergency appointments outwith nursery time
- Speak to nursery staff if your child is anxious about coming to nursery
- Talk to your child about their day when looking at their learning journal
- When your child is unwell inform the nursery, they will be off and state what illness they have

Outdoor / Indoor Play

Play is the way! So sometimes, we need a little help to support all this wonderful learning and development your child will experience throughout the day.

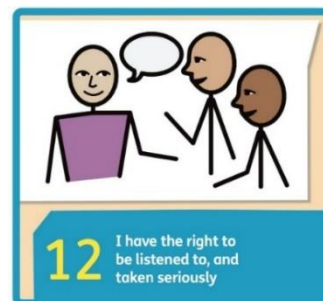
Can you please provide your child with:

- **Welly boots/outdoor shoes**
- **Extra change(s) of clothing/socks/shoes etc.** in case of accidents- messy play- and lots of exploring.

Please could you put your child's name on clothes/shoes as this helps us correctly identify your child's personal belongings.

Please remember to apply sun cream to your child prior to them attending nursery we can reapply throughout the day- this ensures the children can access outdoors as soon as possible.

We understand life is busy therefore if your child has no spare clothes we may need to call you to bring some- Thank you for your understanding.



Online Learning Journals

A reminder of some house rules we would ask you to follow in regards to the learning journals:-

1. It is crucial that you keep us up-to-date with your correct information in order for the learning journals to work.
2. If you need any support using them- please don't hesitate to ask.
3. Please put photos and stories to share their learning and adventures from home too.

Improvement Plan

We would like to share our priorities as a service for this coming session.

They are:-

Priority 1/2:

- Improvements in attainment, particularly in literacy and numeracy.
- Closing the attainment gap between the most and least disadvantage children and young people

Priority 3:

- Improvement in children and young people's health and wellbeing.

Priority 4:

- Placing human rights and needs of every child and young person at the centre of education.

You are all a part of this journey and we welcome you to look at our improvement plan further within our display wall or on our website to see how we will achieve these moving forward and how you would like to be involved.

Child Protection

It is everyone's responsibility to protect children.

At Hillend Children's Centre we ensure we have a caring and safe environment. All adults have a responsibility to protect children and here is further information to support you on this important matter.

Please click the link below regarding key information for Hillend Children's Centre:

[Child Protection | Hillend Children Centre](#)

Please click the link below for further Information through Inverclyde Council:-

[Child Protection - Inverclyde Council](#)

Ways to communication

Please remember the different ways we have of keeping in touch.

Please keep your **contact information** up to date with us.

These methods are important when we share information and keeping you up-to-date with the goings on at Hillend.

You can phone: 01475 715710.

Nursery twitter page: @hillend_cc

Groupcall xpressions app and **Learning Journals**

Email: office@hillend.inverclyde.sch.uk

Closed Facebook group. (Sharing of information- search: - Hillend Children's Centre)

If you require any further information on how to access any of the above please speak to Stacey Barbour—01475 715710.

Sickness

If your child is unwell please contact the nursery.

Please keep us updated until your child is well enough to return to nursery.

We have further information on our Infection control leaflet.

If you have further concerns regarding your child's illness visit NHS inform Scotland for further information.

[Scottish health information you can trust | NHS inform](#)

Security

The nursery has a secure door entry system.

When entering or leaving the building, please be aware of who you're letting in/out around you.

Passwords:

Please do not be offended if we ask the person collecting your child for their password. This is for your child's safety.

Please let us know who's picking your child up if that changes and inform them of your child's password.

The person collecting your child must be a responsible adult.

(No under 18s)

Parental Involvement

We like to encourage parents to become involved in their children's time at nursery in lots of ways!

If you have any skills you could share with the children or have any suggestions we would LOVE to hear from you.

We want you involved in #TeamHillend.

No I in team ☺

Events

Here are some dates to keep in the diary.

Wednesday 19th November 2025- Stay & Play – Numeracy/Maths. *New date*

Wednesday 26th November 2025- Grandparents Day – Bring a special person in.

Wednesday 10th December 2025- Christmas DINNER

Wednesday 17th December 2025- Christmas PARTY TIME

Monday 20th December 2025- **Closed** for Christmas Break

Monday 5th January 2025 – Reopened - All staff and children return.

★ Sponsored Dance ★

Wow! What an *amazing* day we had at our **Sponsored Dance**!

Everyone danced their socks off to brilliant music and showed off their best moves, we're so proud of you all!



Thanks to your fantastic energy and support, we raised an incredible **£1,469.00!** 🎉🎉

A huge **WELL DONE** to every single dancer!

You all helped make the day so special! 😊💖

Website

Please click below on our website for further information.

<https://blogs.glowscotland.org.uk/in/hillendcc/>

We place the Lunch menus, Model calendars, our improvement plans, our standards & quality and many more important items.

Please check out, read and catch up with any further updates and information.

Please don't hesitate to call us if you have any further questions.

Voluntary Nursery Pennies



Overview of Aug / Sept / Oct2025:

Collected: £41.00



Every Wednesday we will be displaying a magic bottle
(Or a magic tin on the buses)

If you ever have some spare **"pennies"** this will be put
towards resources, special events and learning
experiences daily for example: - cooking ingredients.

We will always give an overview of what we have
spent in our newsletters.

🎄 Christmas Hamper Donations 🎁

We're putting together a **Christmas Hamper** to
raffle just before we finish up for the holidays!

All donations are **very welcome** — any items, big
or small, will help make a wonderful prize.

Please place your donated items in the **collection
box at Reception.**

Thank you so much for your generosity and festive
spirit!

Rag Bag Donations

Collected: £51.20

You may have noticed a Rag Bag clothing and textile collection bin located at the main gate.
Please feel free to use this for any unwanted items of clothing. Once the bin has been collected and emptied,
the nursery receives funds based on the amount donated. Thank you for your continuous support.

Sign of the Week

At Hillend we pride ourselves in a variety of total communication methods. We have worked hard to put together our sign of the week.

Every week we will have a sign of the week displayed on our “Communication Station” wall display and we will also share on your child’s learning journal and closed Facebook group. You can even get involved further by being in our videos (just let us know😊) **Please see below signs for Nov to Dec.**

| | |
|---------------------------|--|
| 3 rd November | FINISHED (Fireworks-Special sign) |
| 10 th November | DRINK--MILK WATER Numeracy/Maths Stay & Play TIME- |
| 17 th November | BED/TO SLEEP |
| 24 th November | LOOK Grandparents Day – GRANDAD & GRANNY |
| 1 st December | MERRY CHRISTMAS |
| 8 th December | DINNER |
| 15 th December | SANTA Christmas party's - PARTY |

We would like to build on this further with our staff, children, families and the wider community. This means we are building a deeper understanding and learning together as a team.

Please don't hesitate to ask for resources on the “Communication Station Wall” you see or help yourself when in nursery.

Hillend's Values

Our values were updated last year and are displayed throughout the corridors. They represent what we aim to uphold and achieve every day.

If you'd like to learn more about our values, please don't hesitate to get in touch.



Upcoming Review & Inspection

On the 12th and 13th of November, Hillend Children's Centre will undergo a review by the local authority. We are also expecting an inspection from the Care Inspectorate in the near future.

A big *thank you* for your continuous support — it really means so much to us! ♥
Your thoughts and opinions matter, so please don't hesitate to get in touch. We'd love to hear your suggestions or answer any questions you may have about the information above.

🌐 **Keep in touch!**

Check our website and communication channels regularly for updates and news.

And remember — you can always speak to a member of our Senior Leadership Team:

Sonia, Ann, Joyce, or Stacey — they're always happy to help! 😊

END DOCUMENT