



Hillend Children Centre

Vision



At Hillend Children's Centre, we are dedicated to creating a nurturing and empowering environment where all children, regardless of their abilities, experience a deep sense of **belonging**.

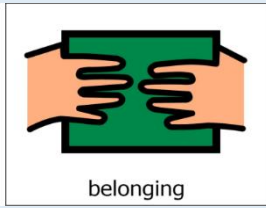
Through **inclusion**, we ensure every child is valued, respected, and given the opportunity to thrive. We believe in fostering **growth**, helping each child reach their full potential with personalised support.

As a community, we encourage **giving** by fostering kindness and generosity, ensuring every child learns to support and care for others. Through **empathy**, we listen, understand, and respond thoughtfully to each child's needs, cultivating a compassionate and supportive space. Meanwhile, **safety** remains our top priority, ensuring children feel secure as they explore, learn, and grow with confidence.

Guided by these principles, we embrace **total communication**, recognising that every child expresses themselves in unique ways. We are committed to supporting them in discovering and using the most effective means to communicate, ensuring every voice is heard and valued.

Our unwavering commitment to our community and values is driven by our staff, whose **BIGGEST hearts** create a loving, supportive, and inspiring environment for every child. By embedding these values in everything we do, we help children develop the skills and confidence to thrive in the world around them.

Values – Our BIGGEST Difference



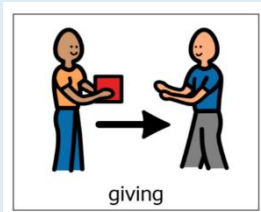
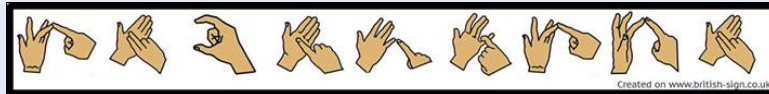
B

Belonging – Every child deserves to feel valued, respected, and part of a community where they are celebrated for who they are



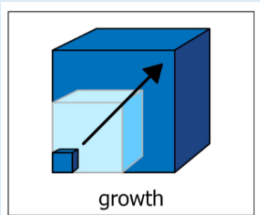
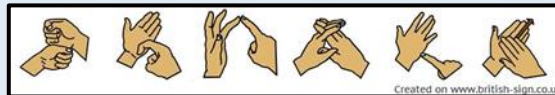
I

Inclusion – We celebrate the uniqueness of every child, ensuring all children, including those with additional support needs, are included, respected and given the opportunity to thrive in an environment where diversity is valued.



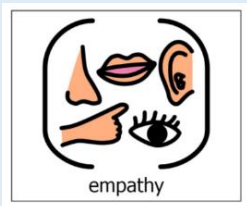
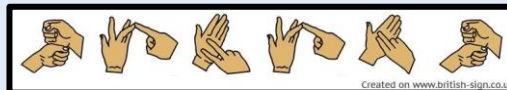
G

Growth – We believe in the potential of every child to develop and reach their full potential, with support that is personalised to their individual needs.



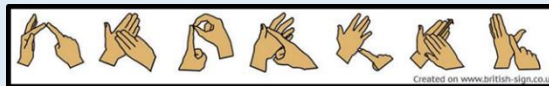
G

Giving – We foster a culture of generosity and kindness, encouraging children to share, support, and help one another in their learning and play.



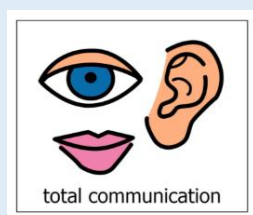
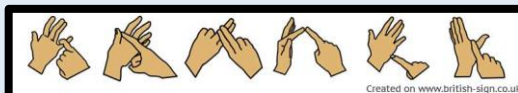
E

Empathy – We cultivate compassion and understanding, listening and responding thoughtfully to the needs and experiences of each child and their families.



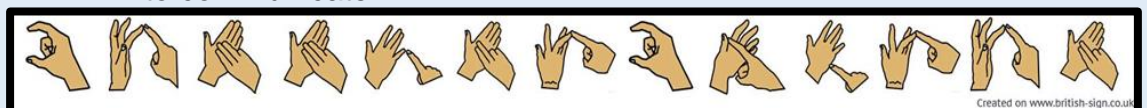
S

Safety – The safety and well-being of every child are our top priority, ensuring a secure environment where they can explore, learn, and express themselves freely.



T

Total Communication – We embrace a variety of communication methods, recognising that every child expresses themselves in unique ways and we strive to support them in using the most effective means to communicate.



Aims



To create an inclusive and accessible learning environment where all children, including those with additional support needs, are fully integrated alongside their typically developing peers, fostering a strong sense of belonging, inclusion and respect



To build strong connections with the local community and external professionals, ensuring every child has access to the support, resources, and opportunities needed for holistic development both within and beyond our setting.



To nurture the individual growth and potential of every child by providing personalised support, guidance, and strategies that empower them to succeed in their learning journey



To promote a culture of giving, where children and staff learn the importance of generosity, kindness, and helping others within the setting and the wider community.



To foster empathy in both children and staff, cultivating a culture of understanding, kindness, and support where each child feels valued and heard.



To ensure that children feel safe and secure, both physically and emotionally, by creating a warm, welcoming, and supportive atmosphere where they can confidently explore and learn.



To facilitate total communication, embracing a range of verbal, non-verbal, sign language, and assistive technology methods to ensure that every child has a voice and is empowered to express themselves



To continuously reflect, adapt, and innovate, ensuring our practice evolves to meet the changing needs of children and families, creating a responsive and inclusive learning environment

By living these aims and values every day, we create a nurturing, inclusive, and empowering space where all children can thrive.