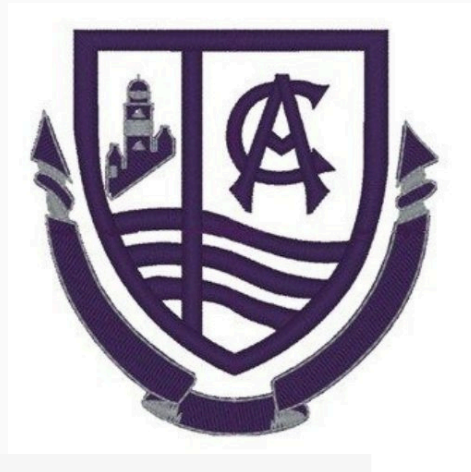




# Clydeview Academy

School Clubs  
2025/26





# Introduction

## Notes





- Joining a club at our school is a great way to make new friends, discover your passions and be apart of Clydeviews wider community. Whether you're interested in sports, arts or leadership, there really is a club out there for everyone. Don't miss out!!! Make the most of your Clydeview experience and get involved.

**Lyle Darroch, Head Boy**

- Clydeview has many clubs that run at lunch and after school. No matter your interest, sports, science or even Lego, there's something for you! Having gone to many of these clubs myself I would greatly recommend going as they are a great way to meet new people and have a good time.

**Lois Herdman, Head Girl**

# Sports Clubs

	Lunchtime	After school Games Hall	After School Gymnasium	After School Outside
Monday	Table Tennis S1-S3			
Tuesday	Boy Fitness Club S1-S3 Basketball Club S1-S3 			Boys Rugby Training S1-S6 
Wednesday	Hockey Club S1-S3 	Girls Netball S1-S3	Girls Fitness S1-S3	
Thursday		Girls Football S1-S6	Badminton Club S1-S6	Girls Rugby Training S1-S6
Friday		Girls Netball S4-6		

Football:

Under 14s Boys Football Team (S2)

Under 16s Boys Football Team (S4)

Under 18s Boys Football Team (S5-6)

Days will vary depending the on the day the fixtures are published.

- Other clubs may be organised throughout the year by Active Schools/partner clubs – look out in announcements
- A sport/activity you would like to see on our timetable? Speak to your PE teacher or one of your Sports Ambassadors or House Captains

# Music Clubs

Day	Activity	Time	Location
<b>Monday</b>	S1/2 Music Group	Lunchtime	Music Room 1
<b>Tuesday</b>	Percussion Club	Lunchtime	Drum Room
<b>Wednesday</b>	String ensemble Guitar Club Woodwind	2.55pm-3.40pm 2.55pm-3.40pm Lunchtime	Music Room 1 Music Room 1 Music Room 1
<b>Thursday</b>	S3-S6 Girls' Choir	Lunchtime	Music Room 1
<b>Friday</b>	Brass Group Friday Fringe	Lunchtime Lunchtime	Music Room 2 Canteen





Club	Year Group	Staff	When	Where
<b>Lego Club</b>	<b>S1/2</b>	<b>Mrs Blackman</b>	<b>Tuesday lunchtime</b>	<b>Social 6</b>

Pupils work in small groups to build Lego models. This enables pupils to develop their problem solving, creativity and critical thinking skills. Pupils are often set challenges that they can build solutions to such as bridge building, water filtration systems and pressure proof structures.

<b>Dungeons and Dragons</b>	<b>S2 &amp; S6 Wednesday S4 &amp; S5 &amp; New players Thursday</b>	<b>Ms Pye / Mr Foster</b>	<b>Wednesday &amp; Thursday 3pm-4pm</b>	<b>Library</b>
-----------------------------	---	-------------------------------	---	----------------

Dungeons and Dragons is back for another year and our imaginations are raring to go. This year we are running two campaigns on Wednesdays after school with each campaign compiling of one senior member from last year's group (known as a Dungeon Master/DM) and up to seven other members. Each campaign will be unique in its imaginative story and will be guided by the decisions of the group members. Each member will create their own character who they will guide through the story as directed by the DM. Please note that the location has changed (alongside the library itself) to the old guidance base just next to Home Ec. Sessions are run by Miss Pye (Librarian) and Mr Foster (Maths). If there is significant interest for more campaigns, then we'll look into accommodating the space. No previous experience of playing is required



<b>Code Club</b>	<b>S1-S2</b>	<b>Mr Robertson</b>	<b>Wednesday Lunchtime</b>	<b>ICT 6</b>
------------------	--------------	---------------------	----------------------------	--------------

Interested in computer coding


<b>Art Club</b>	<b>S1-3</b>	<b>Ms McAllister</b>	<b>Thursdsay Lunchtime</b>	<b>Art 2</b>
-----------------	-------------	----------------------	----------------------------	--------------

Gourock Churches and Schools have come together to set a Christmas Card competition for local school pupils based on the theme Christmas in Gourock.

<b>Darts Club</b>	<b>S1-3</b>	<b>Mr Conley</b>	<b>Thursday Lunchtime</b>	<b>MAT 2</b>
-------------------	-------------	------------------	---------------------------	--------------





Club	Age Group	Staff	When	Where
<b>Wellbeing Wednesday</b>	<b>S1-S4</b>	<b>Various</b>	<b>Wednesday 3-4pm</b>	<b>Pupil Support Hub</b>
<ul style="list-style-type: none"> <li>• Get help with your homework/revision from teachers</li> <li>• Have a snack while you complete your homework/revision</li> <li>• Use the PC's to access Teams</li> <li>• Games, activities and weekly prizes!</li> </ul> 				
<b>Dyslexia Drop in</b>	<b>S1-S3 but all years welcome</b>	<b>Ms McCallum</b>	<b>Wednesday Lunchtime</b>	<b>Pupil Support Hub</b>
This is a support session for young people with dyslexia to access support and advice from senior pupils and support staff.				
<b>Enterprise Group</b>	<b>S2-S3</b>	<b>Ms McKinnon</b>	<b>Wednesday Lunchtime</b>	<b>ICT 3</b>
Pupils can learn and develop their entrepreneurial skills while taking part in group Business style projects and help with planning possible mini events throughout the year. We may also look to enter the YE Tenner Challenge in March depending on the thoughts of the group.				
<b>Boys Autism Group</b>	<b>All</b>	<b>Mrs McGeary</b>	<b>Friday Lunchtime</b>	<b>Old pupil support classroom</b>
Come along to Pupil Support on Friday Lunchtime, were we can practice social skills, get support with homework or take part in activities such as Lego, chess, board games and Rubik's cube. You may want to just have a chat, or want a quiet space to sit.				

Club	Age Group	Staff	When	Where
Boys Autism Group	All	Mrs McGeary	Friday Lunchtime	Old pupil support classroom

Come along to Pupil Support on Friday Lunchtime, where we can practice social skills, get support with homework or take part in activities such as Lego, chess, board games and Rubik's cube. You may want to just have a chat, or want a quiet space to sit.

Crafts Club	S1-4	Ms Fleming	Friday Lunchtime	Soc 1
-------------	------	------------	------------------	-------



The Crafts Club is a welcoming space for young people to explore and express their artistic talents. The club offers a variety of fun activities, including drawing, origami, knitting, collage art, and the opportunity to work with clay. It's the perfect place to try new things and enjoy chatting with friends.

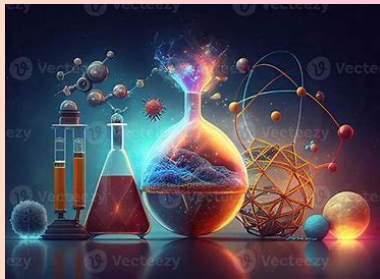
Drama Club	S4-6	Mr McLaughlan	Different time during the year	
------------	------	---------------	--------------------------------	--

Club drama is a group where fans of live theatre can talk and compare notes on shows, musicals and get to see some great live shows.  
Funds will depend on the show and the school bus should suffice so, at present, no funds needed.

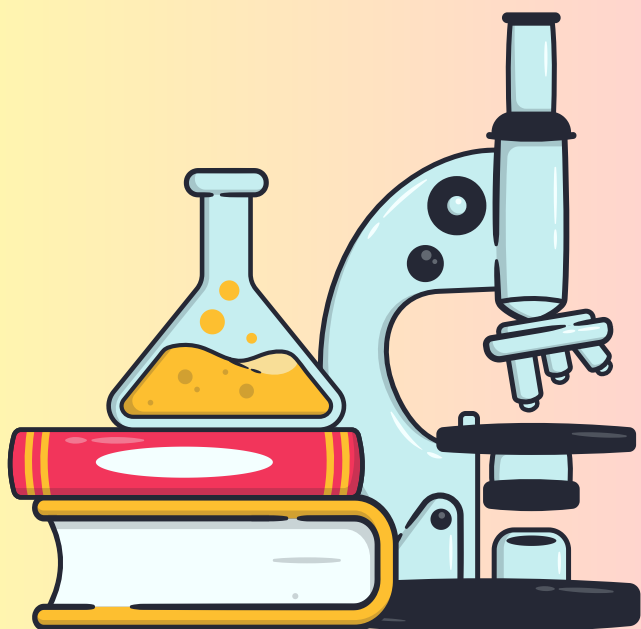




Club	Age Group	Staff	When	Where
Humanities Club	S1-S3	Ms McKeeman	Tuesday Lunchtime	SS7
<p>Interested in History, Geography or Modern Studies? The Humanities Club is a space to explore and share ideas, develop your thinking and have fun!</p> <p>The club offers homework support, quizzes, discussions and debates, escape rooms and other humaniyies themed activities.</p> <p>Why not come along and see how fun the humanities can be</p> <p>See Mrs McKeeman for more information</p> 				
Cinema Club	S1-6	Mr Ashley	Friday 12.34-1.15pm	Eng 6
Watching films chosen by club votes				
Chill Zone	S1-S2	Ms McKinnon	Thursday Lunchtime	ICT 3
<p>Pupils can come to ICT 3 on a Thursday lunch time and can use the space to "chill" - play games on the computer or bring along any games they wish to play with their friends in class.</p>				
Reading Club	S1-2	Ms McCheyne	Thursday Lunchtime	Eng 5
Reading and discussing books				
TECHNICAL				
CAD	All	Mr McQuilken	Monday Lunchtime	Tech 3
Creative Creations	S1	Miss Marshall	Tuesday Lunchtime	Tech
Technology Recycling/ Upcycling Club	S1-S6	Mr Hagen	Tuesday Lunchtime	Tech



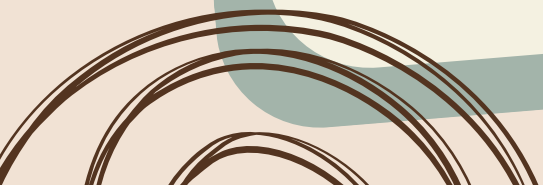
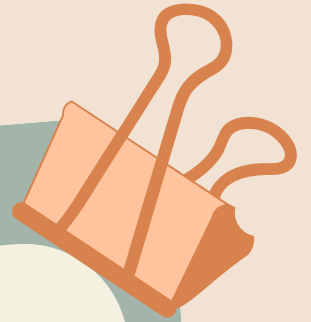
<b>Science Club</b>	<b>S1</b>	<b>Miss McKerlie</b>	<b>Thursday Lunchtime</b>	<b>Science 3</b>
A chance to try your favourite Science experiments and some new ones! Come along and find out more about the world around us!				
<b>S3-S6 Biology Clinic</b>	<b>S3-S6</b>	<b>Mrs McAdam</b>	<b>Friday 12.45-1.15pm</b>	<b>Sci 6</b>
Open to all students for support with classwork and homework				
<b>Physics Drop in</b>	<b>S3</b>	<b>Mrs Currie</b>	<b>Tuesday Lunchtime</b>	<b>Sci 5</b>
Open to all students for support with classwork/skills/homework				
<b>Chemistry Clinic</b>	<b>N5/N6</b>	<b>Miss McKerlie</b>	<b>Wednesday 12.45-1.15pm</b>	<b>Sci 3</b>
Open to all N5/Higher students for support with classwork/skills/homework				



# Why you should join a club?

## Notes

- To develop passions and interests
- To learn new skills
- To blow off steam and have fun
- To meet new friends
- To develop positive relationships with your teachers
- To improve your physical and mental health





# Senior Leadership Team



Head Boy - Lyle Darroch

Head Girl - Lois Herdman

Depute Head Girl - Rachel Fleming

Depute Head Boy - Krish Nathwani & Oliver Wagstaff

