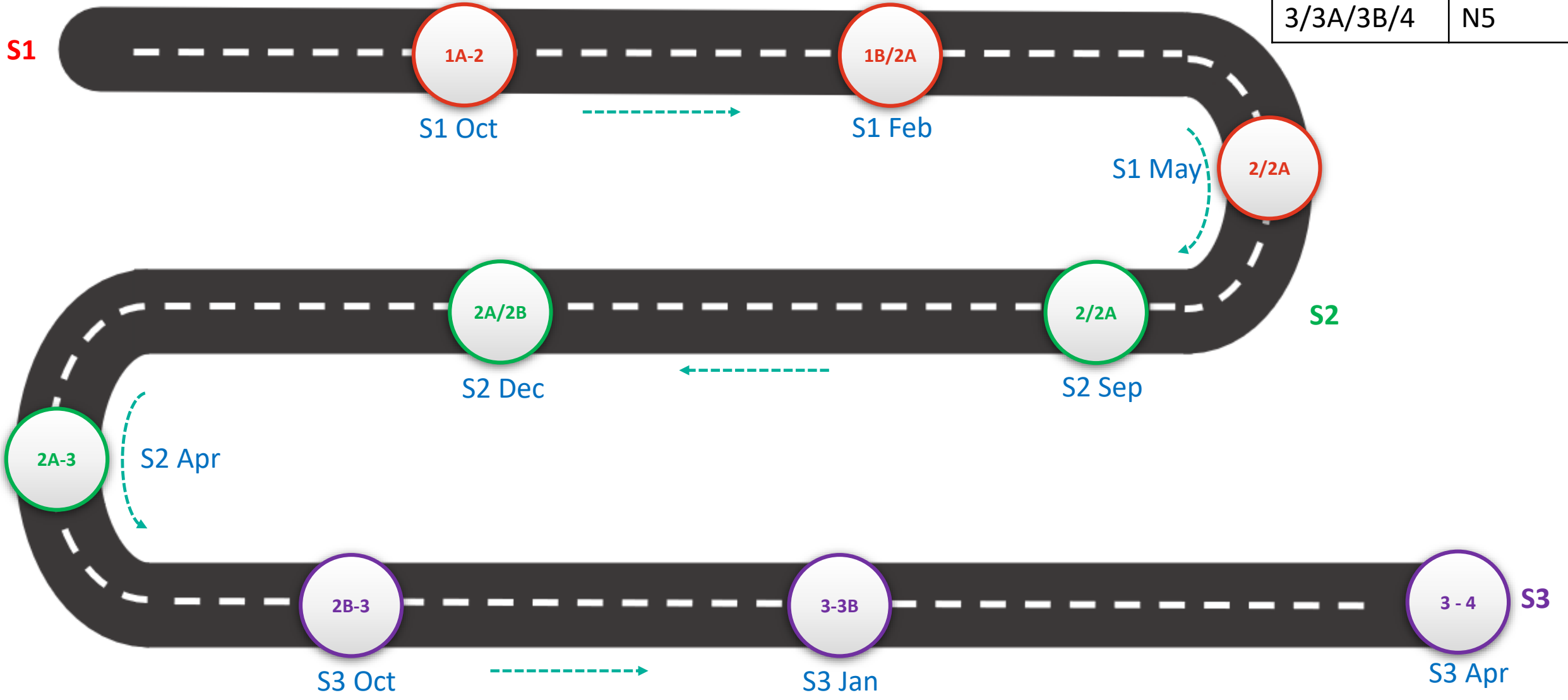


BGE Progression Roadmap to N5

Subject: Art & Design



By April S3	Pathway
1A/1B	N3
2/2A/2B	N4
3/3A/3B/4	N5

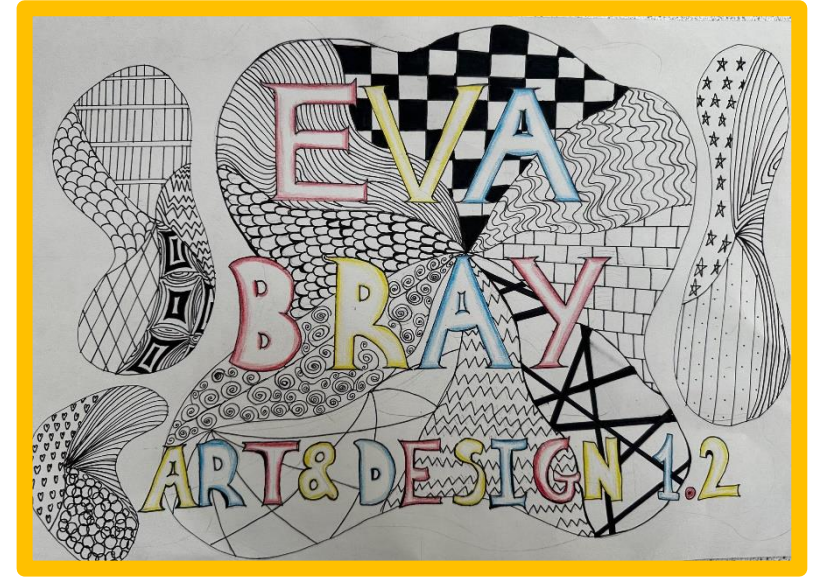
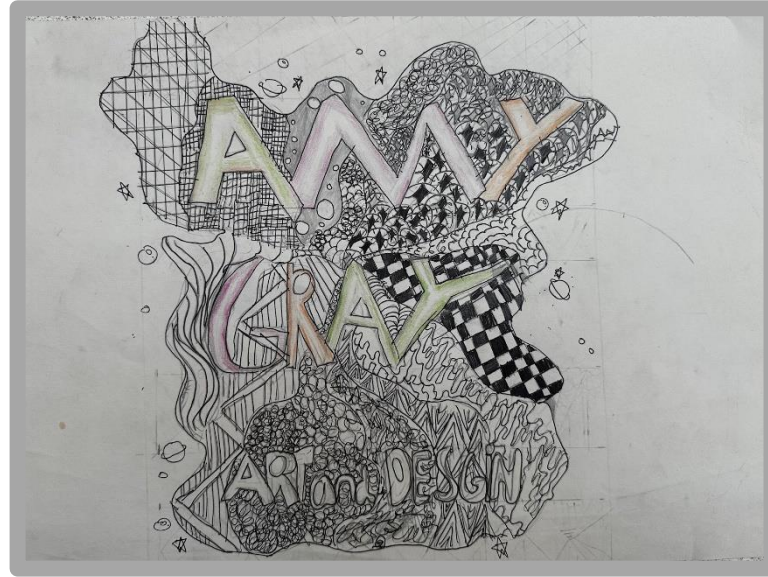


Year	Period	Course Overview	<a href="#">&lt; Back</a>	<a href="#">Next &gt;</a>
S1	August - December	<ul style="list-style-type: none"> <li>• Project Folder Cover Design</li> <li>• Maths Week</li> <li>• Colour Theory test</li> <li>• Sketchbook &amp; Portfolio</li> </ul>		
	January - May	<ul style="list-style-type: none"> <li>• Observational Drawing test</li> <li>• Landscape Composition</li> <li>• Clay Project</li> </ul>		
S2	August - December	<ul style="list-style-type: none"> <li>• Project Folder Cover Design</li> <li>• Sketchbook - Pop Art Unit</li> <li>• Cola Bottle Assessment</li> <li>• Pop Art Painting</li> </ul>		
	January - May	<ul style="list-style-type: none"> <li>• Sketchbook &amp; Portfolio</li> <li>• Design Project</li> </ul>		
S3	August - December	<ul style="list-style-type: none"> <li>• Project Folder Cover Design</li> <li>• Eye study</li> <li>• Half portrait assessment</li> <li>• Portrait Painting</li> <li>• Critical Writing</li> </ul>		
	January - May	<ul style="list-style-type: none"> <li>• Sketchbook &amp; Portfolio</li> <li>• Still Life Unit</li> <li>• Portfolio</li> <li>• Design Project</li> </ul>		

# Art & Design



Type of Assessment											
On-Going High Quality Periodic											
Year Group	Aug	Sept	Oct	Nov	Dec	Jan	Feb	Mar	Apr	May	Jun
S1		Folder Cover	Sketchbook/Math Week Project	Colour Theory Assessment	Clay Project	Sketchbook	Leopard drawing test	Jungle landscape Project	Landscape composition		
S2		Folder Cover	Sketchbook: What Is Pop Art?	Pencil Cola Bottle	Pop Art Painting	Sketchbook	Sketchbook	Design Project	Self-Identity Project		
S3		Folder Cover	Eye Study / Half Portrait	Final Portrait painting	Portrait Critical Writing	Sketchbook	Still life folio work	Sketchbook	Design Project		



## Everyone will have...

---

I have a finished folder cover including my own name, class, and art & design

I have used a ruler to measure accurate guidelines for my lettering

I have added some pattern in the background

## Most people will also have...

---

I have used the skin and bone technique to draw evenly sized bubble lettering

I have added a range of organic and geometric patterns in the background

## Some people will also have...

---

I have embellished my lettering demonstrating creativity and increased visual impact

I have a range of neat and detailed organic and geometric patterns and have used a black pen to add shading, increasing visual impact



Everyone will have...

I can create a 12 segment wheel using a compass with **some support**

I can mix the primary colours to create secondary colours and intermediate with varied success

I can apply paint to the wheel with **some accuracy**



Most people will also have...

I can create a 12 segment wheel using a compass

I can mix the primary colours to create secondary colours and intermediate colours

I can apply paint to the wheel with **increasing accuracy**, using the tip of my brush to ensure the paint stays inside the line.



Some people will also have...

I can create a 12 segment wheel using a compass

I can mix the primary colours to create secondary colours and intermediate colours, achieving a **sophisticated** colour range.

I can apply paint to the wheel with **accuracy**, using the tip of my brush to ensure the paint stays inside the line.



## Everyone will have...

---

I can create a 3D sphere with a **basic** tail and fins as a recognisable fish design

I can use a **limited range** of marks to suggest 2 patterns in different areas

I can apply paint to the fish sculpture with **some understanding** of colour theory



## Most people will also have...

---

I can create a 3D sphere with a **variety** of tail and fins as a recognisable fish design

I can use a **good range** of marks to suggest 2 or more patterns in different areas

I can apply paint to the fish sculpture with a **good understanding** of colour theory



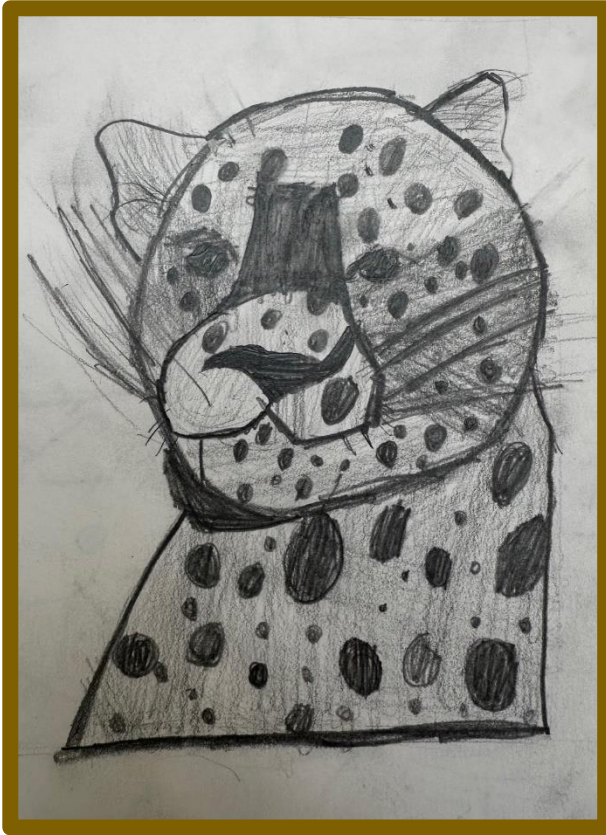
## Some people will also have...

---

I can create a 3D sphere with a **detailed** tail and fins as a recognisable fish design

I can use a **wide range** of carefully applied marks to suggest 2 or more patterns in different areas

I can apply paint to the fish sculpture with a **good understanding** of colour theory and a **controlled application** of paint



## Everyone will have...

---

I have used organic lines and basic shapes to draw my animal with **some** accuracy

I have added a **limited range** of highlights and shadows to add tone and show form

I have made small marks to add texture and detail



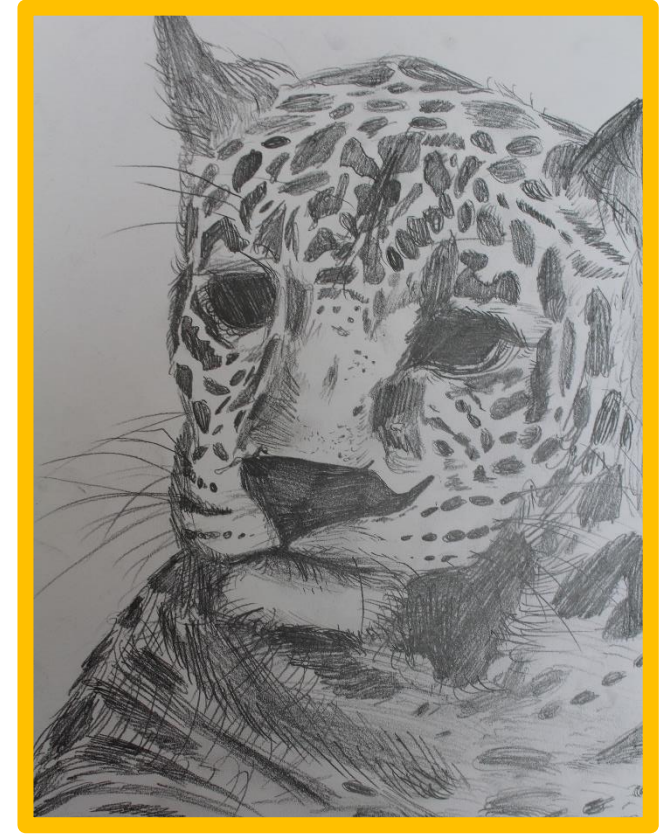
## Most people will also have...

---

I have observed the organic lines and shapes with **increasing accuracy** to draw my animal

I have added a **varied range** of highlights and shadows to add tone and show form

I have made small representational marks to add texture and detail



## Some people will also have...

---

I have observed the organic lines and shapes with **accuracy** to draw my animal

I have added a **wide range** of highlights and shadows to add tone and show form/realism

I have made small accurate marks to add texture and detail



## Everyone will have...

I have a landscape composition including leaves and one animal

I have blended tints and shades of colours to create tone

I have used **basic shapes** to represent my jungle animal

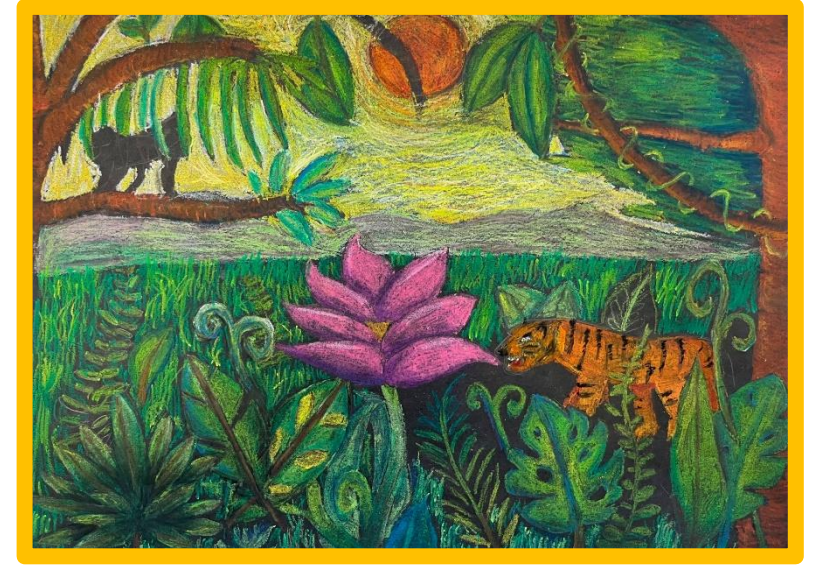


## Most people will also have...

I have layered multiple overlapping leaves and plants to **create depth**

I have used darker colours/tones in the background and lighter colours/tones in the foreground to **increase depth and perspective**

I have **refined the basic shape** of my jungle animal to achieve more detail and realism



## Some people will also have...

I have considered the background of my landscape by adding mountains and a sky to create a more **complex scene**

I have used complimentary colours in the shadows to **increase depth and realism**





## Everyone will have...

---

I have a finished folder cover including my own name, class, and art & design

I have used a ruler to measure guidelines for my lettering

I have used the skin and bone technique to draw bubble lettering



## Most people will also have...

---

I have **embellished** my design with bold shapes and primary colours to link clearly to the pop art theme

I have drawn my lettering **with care** to achieve even sizes and shapes within the guidelines

I have used a ruler to measure **accurate guidelines** for my lettering

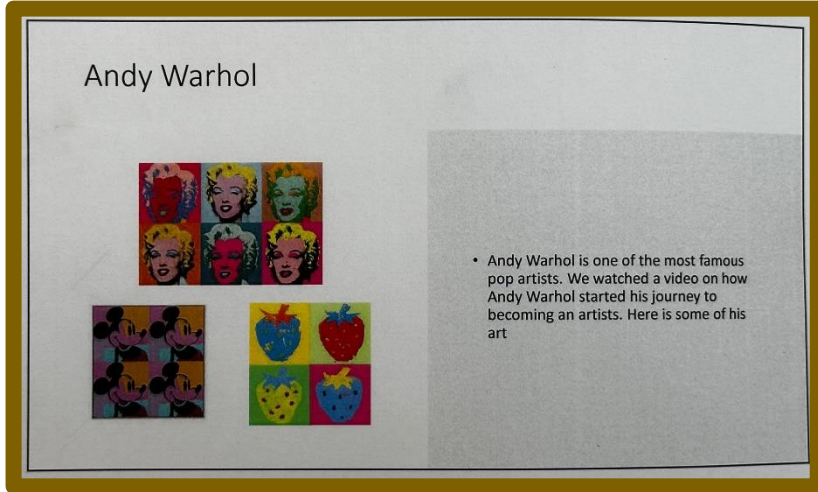


## Some people will also have...

---

I have **added extra detail**, bold patterns such as 'benday' dots to increase the link to the pop art theme

I have added a bold outline and a shadow to my **accurate** lettering to create form and **increase visual impact**



## Everyone will have...

I can demonstrate my understanding of Pop Art styles with a **limited range** of images, showing **some understanding** of colour and style.

## Most people will also have...

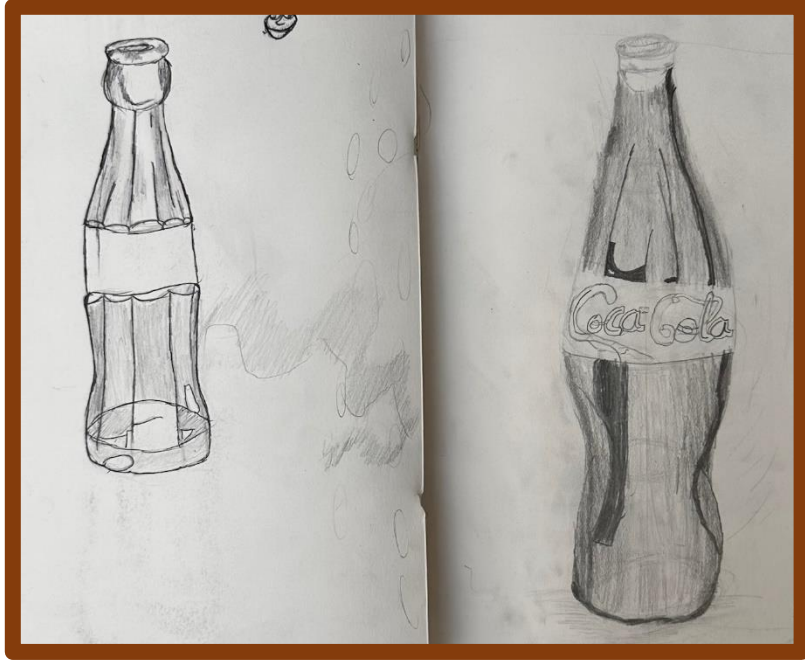
I can demonstrate a **clear understanding** of Pop Art Styles, colour, subject matter and stylisation with a **good range** of image choices

My submission demonstrates **effective** layout and presentation of my research

## Some people will also have...

I can demonstrate a **broad understanding** of a wide range of Pop Art Styles and treatments and have demonstrated this with a **wide range** of image choices and graphic treatment

My submission demonstrates **highly effective** layout and visual impact.



## Everyone will have...

I have used ellipses to draw outlines of a bottle with **increasing accuracy**

I have used skin and bone technique to draw the basic **typography**

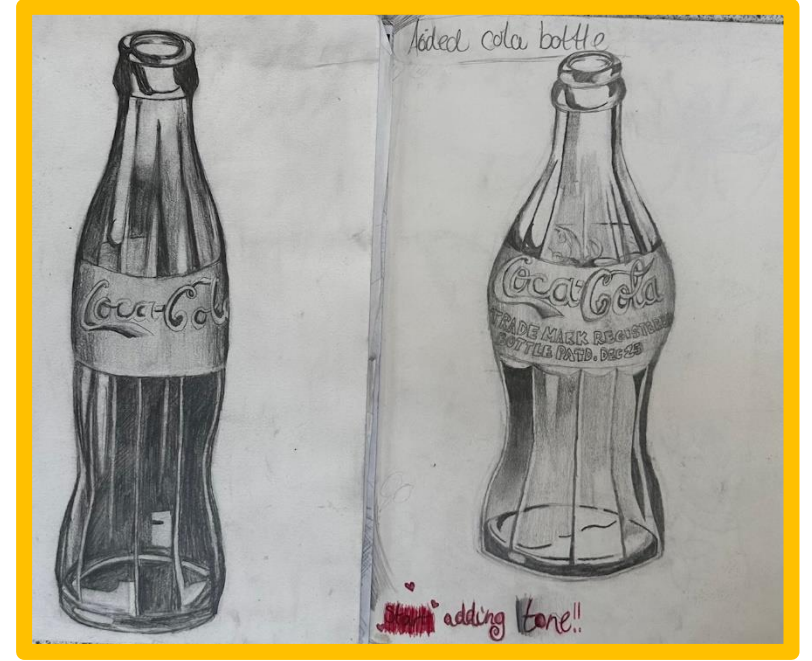
I have sketched **some line** detail on the bottle



## Most people will also have...

I have used some **tone** (light, medium and dark) to **increase accuracy of representation**

I have used varying **weight of line** to achieve detail and **form** on the letters



## Some people will also have...

I have used a **wide variety of tones** to achieve an appearance of **transparency**, demonstrating **accuracy of representation**



## Everyone will have...

I have a painting of a cola bottle completed using a **limited** range tints and shades of one colour

I can apply tints and shades in the correct places to indicate form with **some** control



## Most people will also have...

I have blended a **varied range** of tints and shades of one colour to create form

I can handle the media with **good control** to achieve neat and evenly sized lines



## Some people will also have...

I can handle the media with **control and accuracy** to achieve fine detail. I have blended a **wide range** of tints and shades to create a feeling of form.

I can blend tints and shades **seamlessly** to create **accurate** form and increased realism



## Everyone will have...

---

I can demonstrate **some understanding** of different watercolour techniques, such as wet on wet, to create a variety of effects on my lampshade design

I can create a **simple** card relief for printmaking and can **demonstrate** the printmaking process



## Most people will also have...

---

I can **apply my knowledge** of different watercolour techniques, such as wet on wet, to create a variety of creative effects showing a link to my investigation through colours, patterns and textures on my lampshade design

I can create a **detailed** card relief for printmaking and can **explain and demonstrate** the printmaking process



## Some people will also have...

---

I can **independently apply my knowledge** of different watercolour techniques, such as wet on wet, to create a variety of creative effects showing a clear link to my investigation through colours, patterns and textures on my lampshade design

I can **create a skilful** card relief for printmaking and can **explain and demonstrate** the printmaking process



Everyone will have...

I have a finished folder cover in a Comic book style design with **some** bold shapes, colours and patterns

I have created a nameplate with large text

Most people will also have...

I have a finished folder cover in a Pop Art design with **refined** bold shapes, colours and patterns

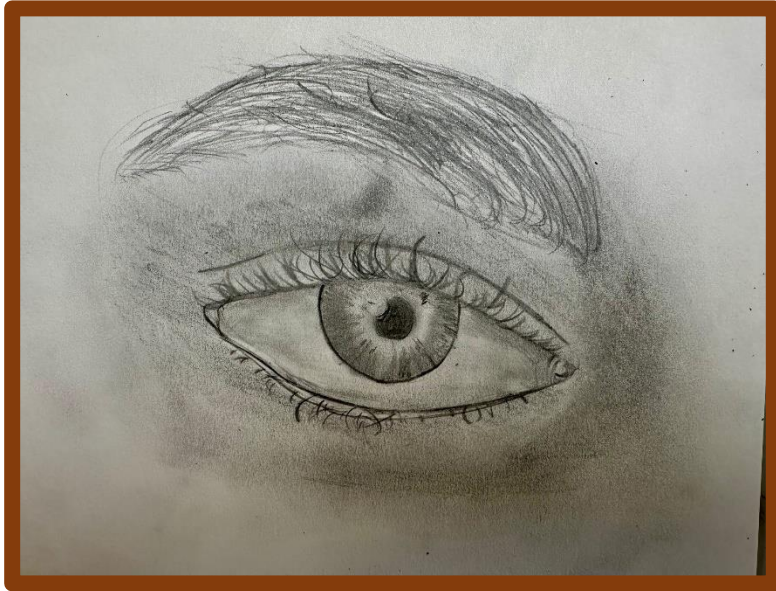
I have used a ruler to **measure guidelines** ensuring all of my letters are the same size and shape/style in keeping with the type style

Some people will also have...

I have a finished folder cover in a Comic book style design with **refined and sophisticated** bold shapes, colours and patterns

I have used a ruler to **measure accurate guidelines** ensuring all of my letters are the same size and shape in keeping with the type style

I have **embellished** my design with 3D typography and illustrations to enhance the Comic book theme



Everyone will have...

---

I have use **simple shapes** to draw three different eyes

I have demonstrated some understanding of different tonal techniques – **blending, cross hatching and pointillism**

Most people will also have...

---

I have been able to achieve a **variety** of light, medium and dark tones using three different tonal techniques

I have been able to **maintain highlights** to achieve **realism**

Some people will also have...

---

I have applied the media with sensitivity to increase **refinement**

I have used a 4B or 6B pencil to increase **depth and definition**, increasing realism and **accuracy of representation**

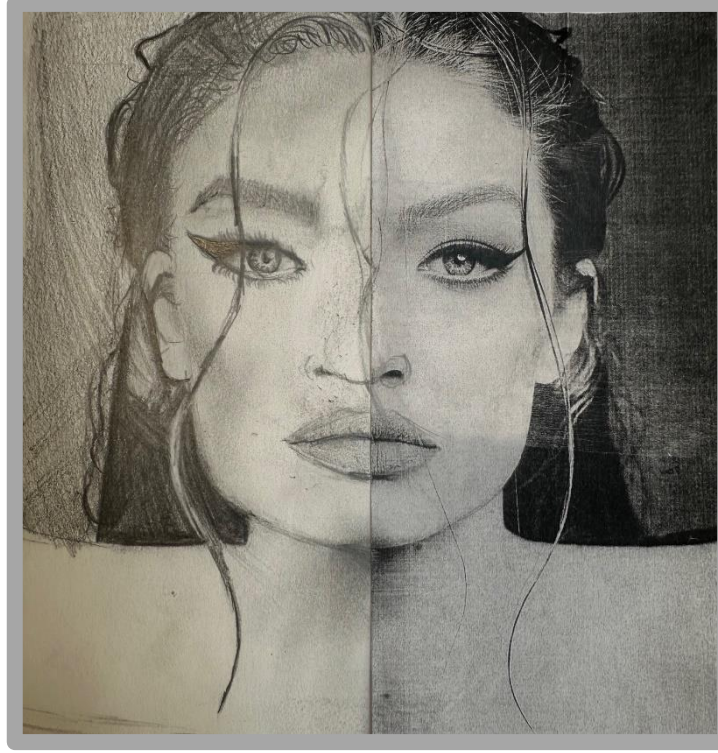


## Everyone will have...

---

I have used my knowledge of proportion to maintain **increasing accuracy** in the features

I have applied some **shading** to indicate **light and shadow**

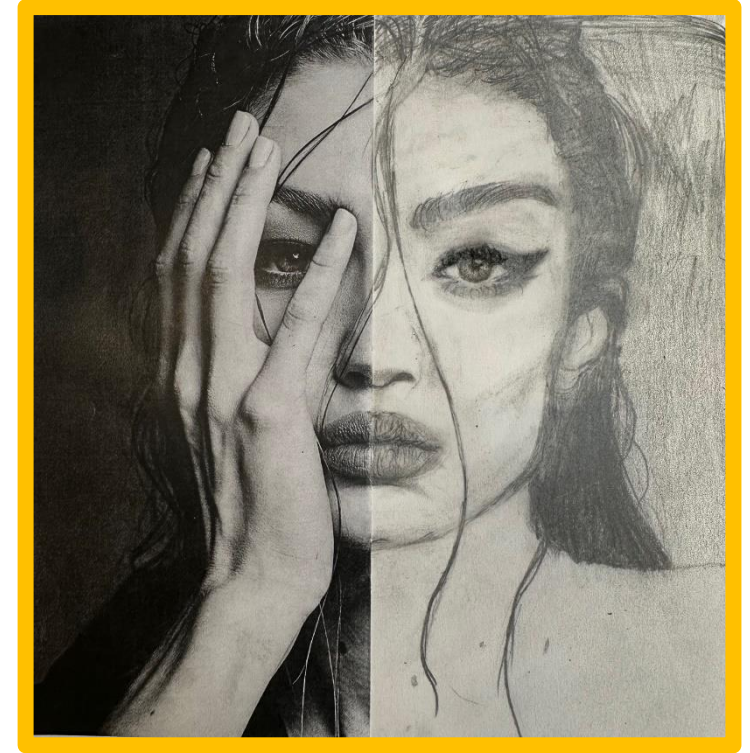


## Most people will also have...

---

I have observed my resources carefully to achieve **detail** and some **realism** in the features

I have applied a **range of tones** using **directional shading** to create the appearance of **form**



## - Some people will also have...

---

I have used varying **weight of line** to achieve **fine details** in hair, skin texture and eyes

I have used a 4B or 6B pencil to add **definition**, increase **contrast** and **accuracy of representation**

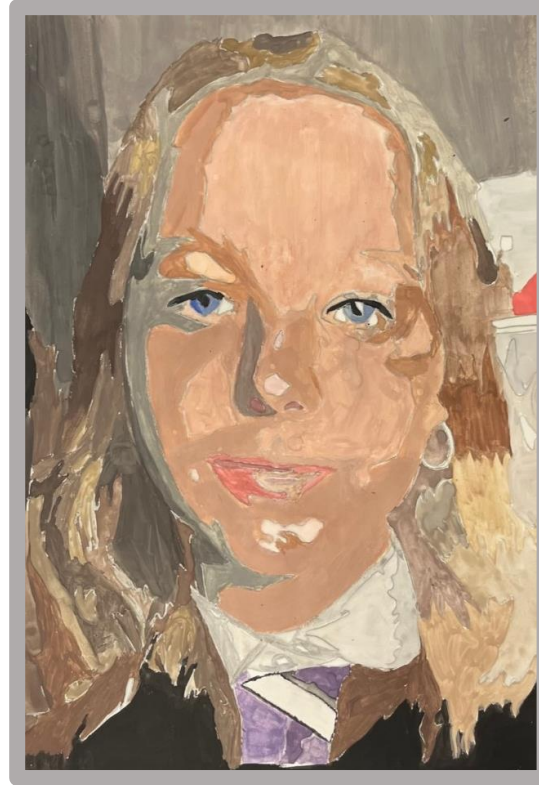




Everyone will have...

I have a stylised self-portrait demonstrating an ability to mix a variety of **skin tones**

I have demonstrated understanding of media properties and visual elements by using a **limited colour palette** to create varying tones



Most people will also have...

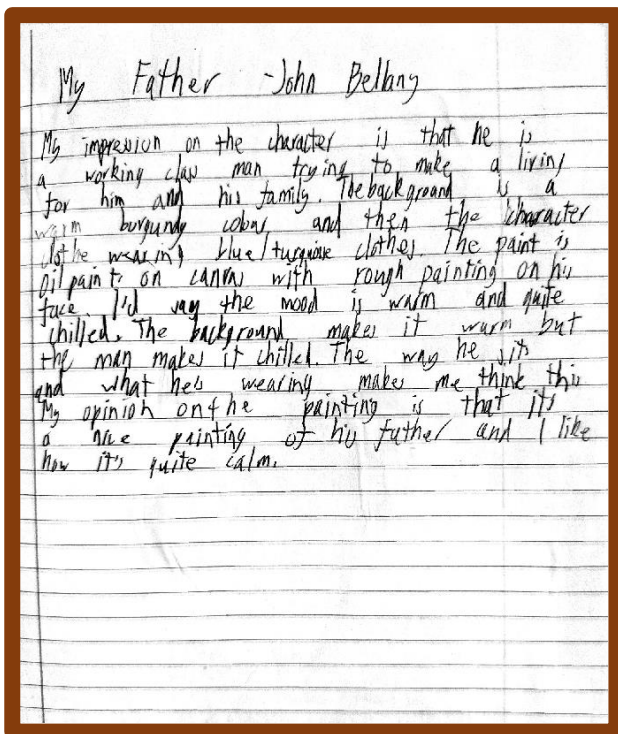
I have handled the media with control and accuracy to achieve **neat and refined** sections

I have used colour and tone with **sensitivity** to achieve **accuracy of representation** of the image



Some people will also have...

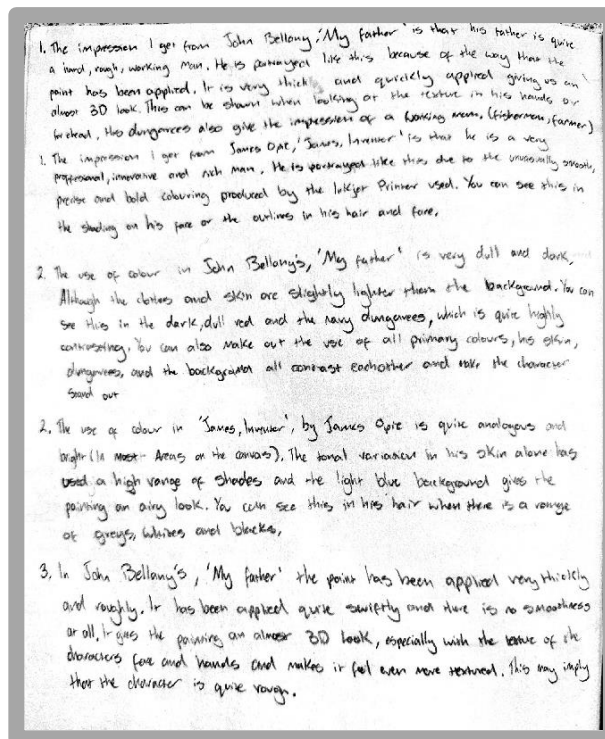
I have demonstrated **depth of understanding** of media handling and techniques by using a fine brush to achieve **detail**



### Everyone will have...

Attempted **all** questions with **limited reference** to the **visual elements** and **limited descriptive information**. Explanation of thought process shows some understanding of the artist's intentions but answers are often not in sentence form and **do not make use of PIE structure**.

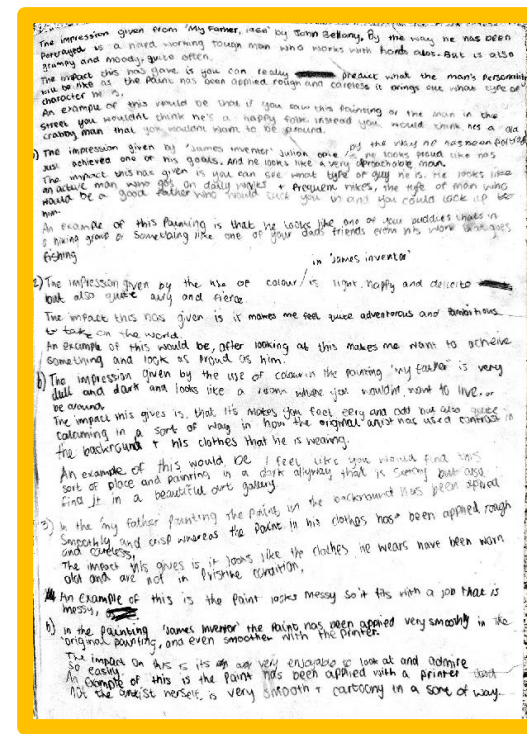
Demonstrates **some** understanding of **visual / artistic elements**, and personal opinion only limited justification of reasoning.



### Most people will also have...

Attempted **all** questions with **clear reference** to the **visual elements** and painting/artwork. **Good descriptive information** provided with some explanation of thought process. Answers are always in sentence form and make use of the **PIE structure** which justifies their personal responses. **A logical interpretation** of the artist's intentions is backed up by referencing the painting.

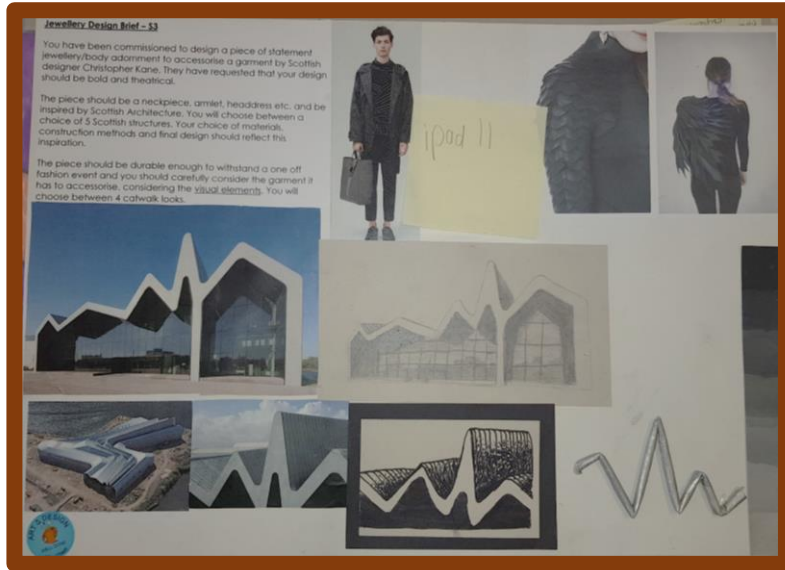
Demonstrates a **solid** understanding of **visual / artistic elements**, with sound personal opinion and justification.



### Some people will also have...

Attempted **all** questions with **clear references** made to the **visual elements** and painting/artwork. **Strong descriptive information** and use of artistic vocabulary. Full answers make use of the **PIE structure** consistently which justifies personal responses. **A logical interpretation** of the artist's intentions is backed up by **referencing the painting** and **articulate vocabulary**.

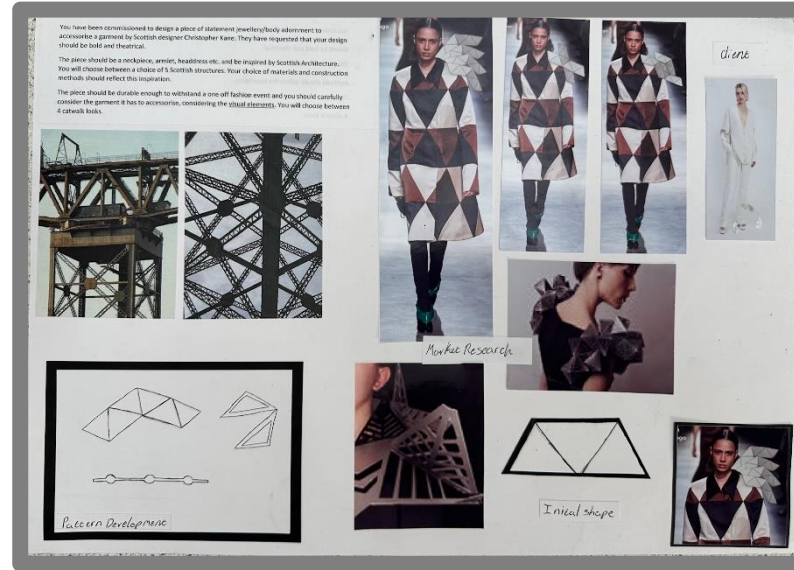
Demonstrates a **broad** understanding of **visual / artistic elements**, with sound personal opinion and justification backed up by **referencing the artwork**.



### Everyone will have...

Created a board which visually displays **most** elements of the design brief with **1 drawing** that describes **some** characteristics of a chosen building. A consideration of **client** and appropriate **colour scheme**, **textures** and **ergonomics** have been partially communicated.

Demonstrated **some** understanding of **layout principles**, and selected an for development into a design. **initial shape**



### Most people will also have...

Created a **visually exciting** board which **accurately** displays **every consideration** of the brief with **some exploration** of textures, shape and ergonomics. Initial shapes will be manipulated in various ways and **experiments** shown of **materials and shape**.

Demonstrated **logical understanding** of layout principles, and selected an initial shape for development into a design that **is shown on the body** in sketch/photo form.



### Some people will also have...

Created a **visually exciting** board which **accurately displays every consideration** of the brief with **thorough exploration** of textures, shape and ergonomics. **Initial shapes** will be manipulated in **various ways** and successful experiments shown with materials to create a design based on a single motif design/pattern.

Demonstrated **good understanding** of **layout principles**, and **communicated ideas** through **annotations and headings**.