

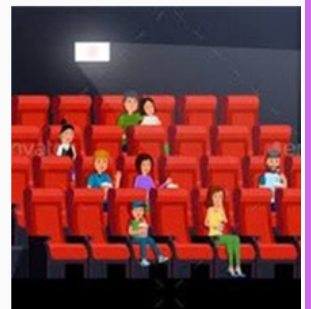
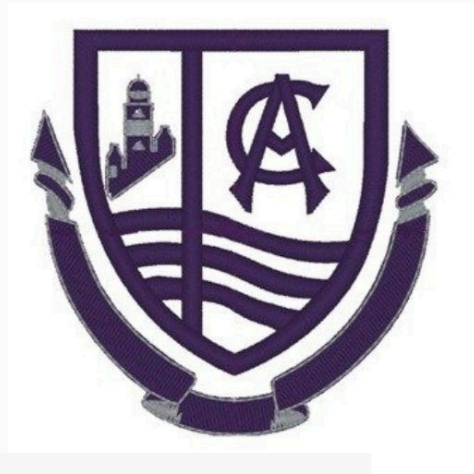


Clydeview Academy

School Clubs

2024/25

School Clubs
2024/25







Introduction

Notes

- At Clydeview, we have a club for everyone! Whether you love your sport or you are scientific - we have something for you. So get involved, make new friends and join a club. You won't regret it!

- Clydeview has so many opportunities for everyone when it comes to clubs, from lunch clubs to after school sports, there is something for everyone! Join a club and meet new people it's well worth it!

Sports Clubs

	After school Games Hall	After School Gymnasium	After School Fitness Suite	After School Outdoors
Monday		Table Tennis		
Tuesday	Basketball S1-S6 			Rugby S1-S6 
Wednesday	Badminton 	S1 Football	Girls Fitness	
Thursday	Netball S1-S3 	Volleyball		
Friday	Netball S4-S6	Dance		
Football:				

Under 14s Boys Football Team (S2)

Under 16s Boys Football Team (S4)

Under 18s Boys Football Team (S5-6)

Days will vary depending the on the day the fixtures are published.

- Other clubs may be organised throughout the year by Active Schools/partner clubs – look out in announcements
- A sport/activity you would like to see on our timetable? Speak to your PE teacher or one of your Sports or House Captains

Music Clubs

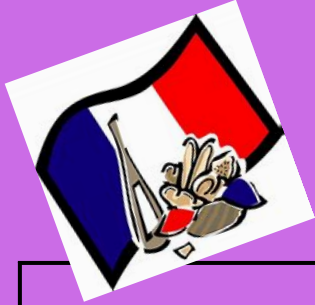
Day	Activity	Time	Location
Monday	S1/2 Music Group	Lunchtime	Music Room 1
Tuesday	Percussion Club	Lunchtime	Drum Room
	Jazz Band	Lunchtime	Music Room 1
Wednesday	String ensemble	Lunchtime	Music Room 1
	Guitar Club	Lunchtime	Guitar Room
	Orchestra	3-3.45pm	Assembly Hall
Thursday	VOISS	Lunchtime	Music Room 1
	Ceilidh Band	Lunchtime	Music Room 2
Friday	Brass Group	Lunchtime	Music Room 1
	Friday Fringe	Lunchtime	Canteen





Club	Year Group	Staff	When	Where
Lego Club	S1/2	Mrs Blackman	Tuesday lunchtime	Social 6
<p>Pupils work in small groups to build Lego models. This enables pupils to develop their problem solving, creativity and critical thinking skills. Pupils are often set challenges that they can build solutions to such as bridge building, water filtration systems and pressure proof structures.</p>				
Science Club	S1	Ms McKerlie/Mr Wylie	Tuesday Lunchtime	Science 3
<p>Having fun exploring weird and gross science. Have an experiment you want to try, you can help decide our activities.</p>				
Dungeons and Dragons	S1-S6	Ms Pye / Mr Foster	Wednesday 3pm-4pm	Library
<p>Dungeons and Dragons is back for another year and our imaginations are raring to go. This year we are running two campaigns on Wednesdays after school with each campaign compiling of one senior member from last year's group (known as a Dungeon Master/DM) and up to seven other members. Each campaign will be unique in its imaginative story and will be guided by the decisions of the group members. Each member will create their own character who they will guide through the story as directed by the DM. Please note that the location has changed (alongside the library itself) to the old guidance base just next to Home Ec. Sessions are run by Miss Pye (Librarian) and Mr Foster (Maths). If there is significant interest for more campaigns, then we'll look into accommodating the space. No previous experience of playing is required</p>				
British Sign Language (BSL)	S1/S2	Mrs McQuarrie	Wednesday 12.50-1.15pm	Deaf Ed Dept
<p>Interested in learning how to sign? Come along to the Deaf Education Dept (Just past Home Economics). Look forward to seeing you there!</p>				





Club	Age Group	Staff	When	Where
Code Club	S1-S2	Mr Robertson	Wednesday Lunchtime	ICT 6
Interested in computer coding				
Dyslexia Drop in	S1-S6	Ms McCallum	Friday Lunchtime	Pupil Support Hub
<p>This is for all year groups, especially 1-4th year and support from the Literacy Ambassadors.</p> <p>Do you have dyslexia? Could you benefit from further support with homework or practice scribing or using ICT? The dyslexia drop in sessions will run every Thursday lunchtime in the pupil support classroom. Senior pupils will be on hand to provide advice or help with any concerns you may have. Please speak to Miss Fox for further information.</p>				
Film Club	S1-6	Mr Ashley	Friday 12.40-1.15pm	Eng 6
Film watching and chatting about them.				
Art Club	S1-3	Mrs Afuakwah/Ms McAteer	Thursday Lunchtime	Art 2
<p>Gourock Churches and Schools have come together to set a Christmas Card competition for local school pupils based on the theme Christmas in Gourock.</p>				





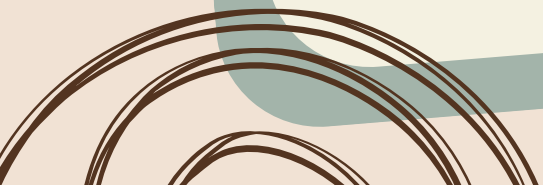
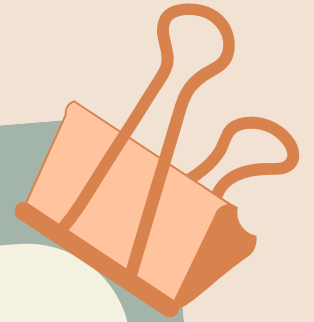
Club	Age Group	Staff	When	Where
Golf Club	S1-S6	Mr Campbell / Mr Wallace	TBC	TBC
<p>Times will vary and will be dependent on weather. We are hoping to set up games/competitions with other schools so it won't be a weekly club. To compete against other schools. Use local facilities to improve skills and gain new experiences</p>				
Technology Recycling/Up cycling Club	S1-S6	Mr Hagen	Friday Lunchtime	Tech
<p> </p>				
Boys Autism Group		Ms Fox	Friday Lunchtime	Pupil Support Hub
<p>Come along to Pupil Support on Friday Lunchtime, were we can practice social skills, get support with homework or take part in activities such as Lego, chess, board games and Rubik's cube. You may want to just have a chat, or want a quiet space to sit.</p>				



Why you should join a club?

Notes

- To develop passions and interests
- To learn new skills
- To blow off steam and have fun
- To meet new friends
- To develop positive relationships with your teachers
- To improve your physical and mental health





Pupil Leadership Team



Head Boy - Jack Ramsay Head Girl - Sophie Gallagher
Depute Head Boy - Stephen McIlroy Depute Head Boy - Carys Donaldson



A
TOWARD

Molly Anderson
Jian Bao
Isla Carrol



B
GANTOCK

Ellie Millar
Sophie Aird
Esme Jack



C
CUMBRAE

Zak Bancroft
Xanthe Thomson
Stephen Mcilroy



D
CLOCH

Millie Paton
Emily Passmore
Lilly Mennim



E
PLADDA

Freya Lindsay
Lauren McLellan
Betty Fischer-Keogh



F
GARROCH

Carys Donaldson
Emma Wilson
Lexi Brown

