



Maxwellton Primary School

Remote Learning Newsletter 1



Remote Learning – Week One

Dear Parents/Carers,

As the end to our first week of remote learning comes to a close we hope that everyone has survived!

We know how challenging a time that this can be for families at present and we wanted to send a short weekly newsletter as a way of staying in touch and connected to our families during this lockdown.



A Very Warm Maxwellton Welcome!

I wish to give a huge Maxwellton welcome to 3 new pupils that have started with us this week in Maxwellton. I am delighted to welcome Aila to Primary 4 and Eliyana and Elis to Primary 2. I had the pleasure of meeting these girls this week and I know already that they are going to be a wonderful addition to our school.

On behalf of all the Maxwellton community I would like to give a huge welcome to Maxi! We hope you will love it here and make many special friends and memories.

We look forward to everyone meeting you in person but for now everyone can say hello to the girls on Google Classroom in P4 and P2.

Contacting us

A reminder to all our families that our school remains open Monday –Friday within the usual working hours.

If at any time you need to contact the school during lockdown, please remember that we are here. We wish to support our families during this time so if you need help or support in any way, please do not hesitate to make contact with us.

Phone 01355 222 521

Email

School Office – gw14maxwelltonoffice@glow.sch.uk

Head Teacher Mrs Laing – gw14maxwelltonht@glow.sch.uk

Principal Teacher Mrs Brown – gw19browncarolyn@glow.sch.uk

If you wish to contact your child's class teacher during lockdown please do this directly through the school office email to ensure that all emails are passed on and follow the correct procedures so that any enquiries can be addressed as quickly as possible

Resources/Materials/ Equipment

If at any time your child needs to replenish their resources jotters, pencils etc please make contact with us and we will get these materials to you.

If you feel there are any materials that would benefit your child at this time also, please let us know and we will try to do all we can to oblige.

Google Classroom

This week has seen the first week of all our learners, parents/carers and staff using Google Classroom again. Hopefully any glitches or problems have been ironed out this week and learners and staff have established again new rhythms in using this platform.

New Expectations

As I am sure you will be aware, the way we are running Google Classroom this time round has progressed from the way we were using it in the first lockdown.

Schools are being asked to meet new expectations and to try and run Google Classroom as close to a normal curriculum learning programme as possible.

This means there should be a substantial amount of differentiated learning tasks posted for your child each day.

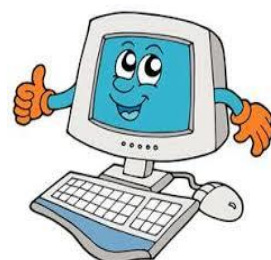
If you find the amount too much or overwhelming for your child then please prioritise the literacy and numeracy learning tasks each day.

The health and wellbeing of all our pupils, families and staff is at the forefront of our minds and as a school we are trying to balance this with fulfilling the expectations placed upon us also.

You will also see staff using new tools this time round over the course of lockdown and the use of pre-recorded learning tasks through using tools such as Screen Castify, PowerPoint with voice over and Jam boards. Please be gracious to staff as they put these new skills into use in a very public forum.

Digital Inclusion

As part of our 'Contingency Planning' and preparations we have worked hard to make sure that every child within Maxwellton is able to access Google Classroom in some way. All families who made contact with us before Christmas have been issued with a brand new device. It is imperative that you make contact with us to let us know if your family has **no way** of accessing Google Classroom. This may be because you may not have Wifi or a device to access it. Please note that google Classroom can be accessed via X-boxes also. We are able to seek support from SLC for devices for children that cannot access Google Classroom however, **this is prioritised on a needs basis with vulnerable and Free School Meals pupils being the priority.** We want all children in Maxwellton to have access to a device but we need families to inform us if there is an issue. Let us know so that we can help!



Google Classroom Engagement Monitoring

Please see below a summary of our Google Classroom engagement monitoring over the course of this week

	Active The learner has activated and signed on to the Google Classroom platform	Commented The learner has commented on the stream and is interacting with their teacher and peers	Posted Work The learner has returned their work and posted it on Google Classroom for their teacher to see and mark	Level 3 Engagement The learner is engaging in the fullest way on Google Classroom
Primary 1	84%	84%	76%	76%
Primary 2	92%	76%	76%	76%
Primary 3	100%	76%	67%	67%
Primary 4	100%	92%	92%	92%
Primary 5	95%	82%	64%	64%
Primary 6	94%	88%	67%	67%
Primary 7	97%	83%	60%	60%

Technical Support – All in it Together!

Mrs Brown IT Coordinator

If you need any technical support whatsoever with Google Classroom then please make contact with us. There is no question too small and we really are all in this together. Mrs Brown is our very own, IT helpdesk and is a whizz kid on Google Classroom solving many issues very quickly.



Maxwellton Twitter – Please note that our twitter page is full of helpful digital tips also

Maxwellton Digital Support Booklet

As a school we also created a Maxwellton Digital Support Booklet and we emailed this to all our families before remote learning began on the 11th January. We have attached this booklet again with this email to help families.

South Lanarkshire Council – Remote Learning Support Site

South Lanarkshire Council has also created a site to help with remote learning support. Please copy and paste the link below to access it.

<https://sites.google.com/sl.glow.scot/slcremotelearning/home>

Google Classroom Reminders

- Please encourage your child to be as interactive on the Google Classroom platform as possible. Teachers want to hear pupils thoughts and opinions in the stream and chat function regarding learning
- Each teacher will ask a question first thing in the morning at 9am. Whatever time your child logs on to Google classroom your child should comment and answer under this question each day. Please make your child aware of this daily question or check in. These daily questions are being used as a register and engagement monitoring so it is important that your child interacts to get the most benefit from the platform.
- Please remind your child that Google Classroom is a classroom space and therefore any comments added to the stream should be entirely appropriate. A good rule to go by is if you wouldn't say it in the classroom then it shouldn't be said on the Google Classroom stream.
- Please remind children that as much as we want to encourage interactions between peers the stream however should not be used for social interaction that would not be appropriate in the classroom during a lesson
- Children should upload their work for the teacher to mark and see as much is possible. A step by step how to guide is included in our digital support booklet and a video clip on how to do this has also been pinned to our Twitter page
- All work will be marked by the teachers but please remember that this may not be immediate. Teachers may have meetings, preparation of learning tasks and other responsibilities throughout the day also. Teachers may also be working within our school hub supervising keyworker children too.

The Hub

Our school hub is open for children of keyworker parents. Children during the hub are also working on their Google Classroom activities and being supervised by staff. The children are completing the exact same Google Classroom learning activities as the children working from home.

If your child needs their novel or any specific material from their paper pack, please remember to send this in with them when they attend our school hub.

Children in attendance of the school hub can wear dress down/comfy clothes.

P1 Enrolment

Infant enrolment week - January 2021

Registration of children starting school - Is your child due to start school in August 2021?

Parents/carers of children who are five years of age between 1 March 2021 and the end of February 2022 are required to register their child for starting school.

To enrol your child at school you will be asked to complete an online registration form which will be available from Thursday 14 January 2021 from the SLC Website. If you have any difficulties regarding this please contact us at the school.

Nursery Registration

Any parent wishing to register their child for our nursery, should email our school office to ask for a nursery application. The office staff will then direct parents through this process from there.

Sumdog & RM Maths

A reminder for all our families that pupils at Maxwellton will also have access **every day** to the following programmes.

- Sumdog – numeracy, spelling & grammar
- RM Maths



Log ins and passwords for these have been issued to all pupils in their paper home learning packs.

Details of how to access these have been sent out in our ‘Digital Support Guide’ – also attached to this email



These are wonderful programmes which pupils can complete independently and which pupils really enjoy. If your child has not been on these programmes yet at home we strongly recommend them to you.

Live Lesson Programmes

Education Scotland – e-sgoil

Education Scotland have organised a programme of live lessons available for our learners also through their e-sgoil website. If you click on the link below you will be able to see the range of live lessons that are available through each week through e-sgoil



<http://www.e-sgoil.com/lockdown-live/>

South Lanarkshire Council

SLC will also be offering some central Live lessons for pupils and class teachers will direct pupils to these through their Google Classroom.

BBC

The BBC are also offering arrange of Live Lessons throughout lockdown. For more information on this please visit the BBC Bitesize web page where you will find a programme for the week posted.

Bitesize					Lockdown Learning Mon 11 - Fri 15 Jan				
Monday	Tuesday	Wednesday	Thursday	Friday	Monday	Tuesday	Wednesday	Thursday	Friday
Primary Learning on CBBC									
09:00 BBC Bitesize Daily 5-7 years Maths & History	09:00 BBC Bitesize Daily 5-7 years English	09:00 BBC Bitesize Daily 5-7 years Science	09:00 BBC Bitesize Daily 5-7 years Maths & French	09:00 BBC Bitesize Daily 5-7 years English & Wellbeing	09:00 BBC Bitesize Daily 7-9 years Maths & History	09:00 BBC Bitesize Daily 7-9 years English	09:00 BBC Bitesize Daily 7-9 years Science	09:00 BBC Bitesize Daily 7-9 years Maths & French	09:00 BBC Bitesize Daily 7-9 years English & Wellbeing
09:40 BBC Bitesize Daily 9-11 years Maths & History	09:40 BBC Bitesize Daily 9-11 years English	09:40 BBC Bitesize Daily 9-11 years Science	09:40 BBC Bitesize Daily 9-11 years Maths & French	09:40 BBC Bitesize Daily 9-11 years English & Wellbeing	10:05 Celebrity Supply Teacher Maths with Mark Labbett	10:05 Celebrity Supply Teacher English with Gert Horner	10:05 Celebrity Supply Teacher PE with Marcus Rashford	10:05 Celebrity Supply Teacher Gardening with Jeff Hardy & Zan Henry	10:05 Celebrity Supply Teacher Food Science with Nestor Blumenthal
10:15 Horrible Histories	10:15 Horrible Histories	10:15 Horrible Histories	10:15 Horrible Histories	10:15 Horrible Histories	10:45 Our School	10:45 Our School	10:45 Our School	10:45 Our School	10:45 Our School
11:05 Art Ninja	11:05 Art Ninja	11:05 Art Ninja	11:05 Art Ninja	11:05 Art Ninja	11:35 Operation Ouch!	11:35 Operation Ouch!	11:35 Operation Ouch!	11:35 Operation Ouch!	11:35 Operation Ouch!

Head Teacher Remote Recognition Awards

	<i>Well done to these pupils that stood out on Google Classroom for their super attitudes and efforts</i>	
Primary 1	<p>Brooke – Resilience</p> <p>Completing all tasks to a fabulous standard and giving her very best</p>	<p>Harris – Respect</p> <p>For working so hard, showing amazing adaptability and politeness and respect in every interaction. Always having a big smile in his activities!</p>
Primary 2	<p>Mya – Resilience</p> <p>For working so hard, showing amazing adaptability and having a I can do it attitude</p>	<p>Jonah – Respect</p> <p>Demonstrating a respect and politeness in all interactions and posts and respecting learning</p>
Primary 3	<p>Megan T – Respect</p> <p>For demonstrating an incredible work ethic and giving the best to all learning and having a positive, enthusiastic attitude!</p>	<p>Danielle – Respect</p> <p>For demonstrating an incredible work ethic and giving the best to all learning and having a positive, enthusiastic attitude!</p>
Primary 4	<p>Lucy – Respect</p> <p>For demonstrating respect for learning and being so enthusiastic and keen. An infectious, positive attitude!</p>	<p>Mikey – Resilience</p> <p>For working so hard and never giving up in submitting his work! Well done for a champion effort!</p>
Primary 5	<p>Brooke M – Respect</p> <p>For working so hard and demonstrating a respectful manner in every interaction</p>	<p>Cameron – Resilience</p> <p>Always trying his hardest even when things are tricky and giving a great effort</p>
Primary 6	<p>Caitlyn Mc – Resilience</p> <p>For working so hard and demonstrating fabulous work ethic and enthusiasm</p>	<p>John - Resilience</p> <p>For working so hard and demonstrating a respectful manner in every interaction</p>
Primary 7	<p>Morgan – Respect</p> <p>For respecting learning and demonstrating a fabulous work ethic</p>	<p>Callum – Resilience</p> <p>For working so hard this week and making great progress in learning</p>



Twitter Fun

For a bit of fun and a sense of Maxi community we are asking from Monday if you get the chance to upload a little picture to our twitter account of your children doing their remote learning!

Some people have already been sharing photos of them doing this and we thought it was a lovely idea and a nice way to see everyone!

We look forward to seeing the photos of those that get a chance to upload them!

A bit of fun to bring a smile and to help us all feel connected! **@MaxwelltonPS**



SLC Winter Clothing Campaign

If your family needs any help or support purchasing winter clothing please make contact with the school as we have been given a small fund from SLC to help families in need with this. Please email me directly at my Head Teachers email address if this is required gw14maxwelltonht@glow.sch.uk

Guitar Lessons

We are delighted to say that our guitar lessons are continuing for our P7 pupils during lockdown. Mr Harris will be available as usual through Google Classroom on a Monday for these pupils.



Secondary Transition

All our P7 Secondary transition packs have been issued to our P7 families when you collected your paper home learning packs.

It is vital that these forms are returned as soon as possible to our school office.

These forms can be returned in person or emailed to our school office.

The forms should be returned by Wednesday 20th January 2021.

Please ensure that your form is signed and if you have any queries or difficulties completing this form, please do not hesitate to get in touch with our school office.

Thank You & Well done!

I would like to take this opportunity to thank all our learners for their incredible achievements this week on Google Classroom!

I have been so impressed with their work ethic, resilience and adaptability of our learners not to mention the range of digital skills, which they are demonstrating every day!

A huge well done!

A big thank you to all our families including grandparents that have been supporting children with learning!

We know this is a tricky time but hopefully we will all feel the support of one another!

Well done for the completion of week One!



