

SLCN CLG: Our Year 2019/20



LCFE Training presentation and resources updated

'Ongoing CLPL Opportunities: Staying connected during COVID-19' document created

'Supporting the return to educational settings: transition supports for children and young people with SLCN' document created

VERP / LCFE presentation and booklet updated



27

establishments trained
(1 postponed due to Covid-19)



8

establishments validated
(10 postponed due to Covid-19)



73

establishments in mentoring



1

focus group evidencing positive impact

LCFE

Inclusion Support and Development Groups

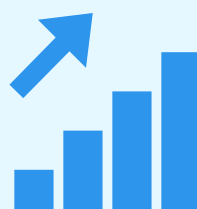
60

Early Years establishments represented

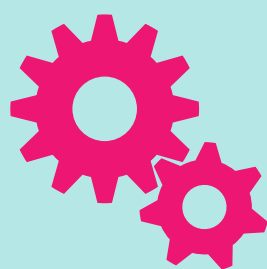


46

Primary establishments represented



all groups reported increased confidence in supporting young people with asn



Strong partnership working with Speech and Language Therapy colleagues

Positively evaluated SLCN training inputs to...

330

Probationer Teachers

50

Support for Learning Workers



31 establishments via Alternative Autism Strategies, in collaboration with Middlefield staff

Next steps...



Twitter strategy to promote LCFE and TALK strategies



Working Group to consider implementation of SCERTS within ASN establishments



Quality assurance / data analysis to capture long-term impact of LCFE