

**The remit of the Early Years Support Service (outreach) include the following:**

- Point of contact for Glasgow Early Years Services, establishing close working partnerships and effective collaborative practice
- Providing timely support through short term, targeted, outreach support within the child's local EYC and primary
- To ensure that children and young people are provided with the support they need to help them work towards achieving their full potential
- To promote collaborative working among all those supporting children and young people;
- Working collegiately with Education Services' staff to build capacity through staff development, coaching and mentoring within the early years and early level in primary settings
- Working with colleagues within Education Services in order to contribute to building capacity and improving outcomes for children and young people

**For more information contact**

**Cat Maclennan**

**Service Co-ordinator**

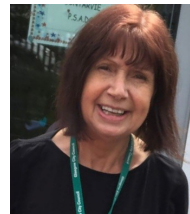
**[CMaclennan@hazelwood.glasgow.sch.uk](mailto:CMaclennan@hazelwood.glasgow.sch.uk)**



**The Early Years Support Service (Outreach) team**



**Cat Maclennan**  
Co-ordinator



**Maureen Carr**  
Clerical Assistant



**Hollie Hamilton CDO**  
(East P/T)



**Kayleigh McNicol CDO**  
(East P/T)



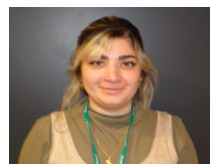
**Heather Kerr CDO**  
(South)



**Megan McGowan CDO**  
(South)



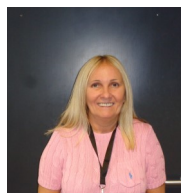
**Elizabeth McGrail CDO**  
(West)



**Fatemeh Namazi CDO**  
(West)



**Isobel Bird**  
SFLW (P/T)



**Carol McGuire**  
SFLW (P/T)



**Sandra Gemmell**  
SFLW (P/T)



**Early Years Support Service**

**c/o Hazelwood School**

**50 Dumbreck Court**

**Glasgow**

**G41 5DQ**



## WHO ARE THE EARLY YEARS SUPPORT SERVICE ? (EYSS)

The Early Years Support Service is one team with two strands;

Early Years Support Service  
(Transition)

**Formerly known as EYAS**

**Referrals from Health colleagues only to;**

AND

Early Years Support Service  
(Outreach)

**Referrals from Education colleagues to;**

**[Eyss@hazelwood.glasgow.sch.uk](mailto:Eyss@hazelwood.glasgow.sch.uk)**



## The main duties and responsibilities of the Early Years Support Service (Transition)

**For children who are not yet accessing their local early years settings, who have an identified Additional Support Need and are no younger than 18 months of age, with parental consent referrals can be made into the service via Health.**

Delivery of an inclusive and diverse service that protects and cares for children whilst working with the child and their family at home, in partnership with all relevant stakeholders e.g. Psychological Services, Health teams and local Early Years Settings.

The team, which consists of 3 CDO's, will gather information through discussions with families and involved professionals, and through play sessions in the child's home environment.

This information is then used to develop a transition profile, which will in turn support joint-working and collaboration with neighbourhood ELC centres to support inclusion. The team will support the child, their family and the local EYC throughout the transition.



Dianne  
McGrattan  
(West)



Susan  
McDermid  
(East)



Linda  
McGowan  
(South)

## The main duties and responsibilities of the Early Years Support Service (Outreach)

**Referrals are made into the service via local Early Years Establishments after discussion and agreement at their local SIIM**

The Early Years Support Service will establish close working partnerships with Early Years establishments and local Primary schools (Early Level).

The team will provide short term and targeted support in the format of up to 6-8 supportive visits, to Early Years Centres and Primary Schools across the Early Level /pre-Early Level through outreach support within the child's local education establishment.

The team consists of 6 Child Development Officers and 3 part time Support for Learning Workers, who will work collegiately with Education Services staff across the city.

Their purpose is to build capacity through staff development, coaching and mentoring within the early years / Early Level context which will in turn support relevant and appropriate professional development

The criteria and referral documents are available upon request.

Our SFLW's work across both strands of the service

***It is worth noting at this point that the Early Years Support Service do not make recommendations for school placements.***