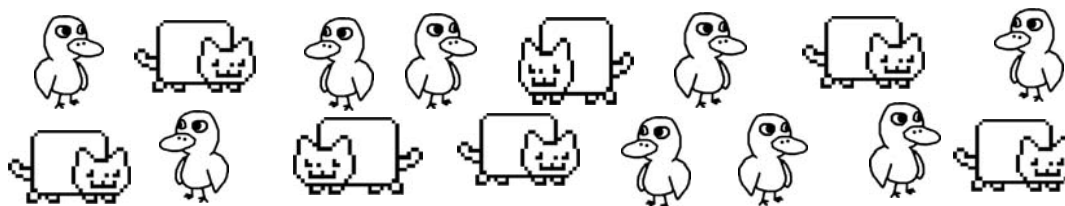


## National 4 Homework Exercise 8 Ratio

**Q1**



Write down the ratio of ducks to cats.

**Q2** Simplify each ratio as far as possible: -

a) 9:15

b) 36:20

c) 23:46

d) 11:66

**Q3** A Recipe for pancakes uses 3 cups of flour to 2 cups of milk.  
If you have 24 cups of flour how many cups of milk would you need?



**Q4** On a school trip the ratio of teachers to pupils must be 1:10.

a) 200 pupils are going on a school trip to Blackpool. How many teachers will need to go?

b) 8 teachers are available for a school trip to strathclyde park. What is the maximum number of pupils who can go?



**Q5** A wealthy businessman dies and leaves £340 000 in his will to be shared between his two sons, Bob and Jim, in the ratio 3:2

Write down how much money each son receives.

**Q6** A manufacturer has changed its washing machine liquid so that less liquid will be needed for each wash.

As a result the new 150ml bottle gives the same number of washes as the old 400ml bottle.

A family wash used 80ml of the old of the old 400ml bottle. How much liquid will be used for a family wash now?

