

# National Early Language and Communication (NELC) Project

## Newsletter 5

Explore NELC resources & materials [here](#)



### PROJECT STATUS

As the NELC project nears completion, this will be our final newsletter. We are delighted to share that **Scottish Government** has commissioned a **second phase of the NELC project**, which will be hosted by **NES**, to continue and expand on this work.

*THANK YOU!*

We would like to **thank you** for your continued support and collaboration throughout the project, with a special thanks to **Education Scotland** for hosting and supporting throughout phase one.

### PROJECT ACTIVITY and CONNECTIONS



**LEADERSHIP:** An Early Years Speech, Language and Communication Action Plan is due to be published in the autumn term. Impact and delivery of this has been included in the Programme for Government 2025-2026.



**NELC 2 will continue to embed early SLC as a national priority during implementation of the Action Plan.**

**CHILDREN & FAMILIES:** In May 2025 NELC team coordinated a parental engagement process to ensure that the views of families were reflected in the action plan. NELC continue to respond to opportunities to strengthen SLC messaging within existing family support offers.



**NELC 2 will continue to promote a strengths-based, public health approach to SLC that supports families from pregnancy onwards.**

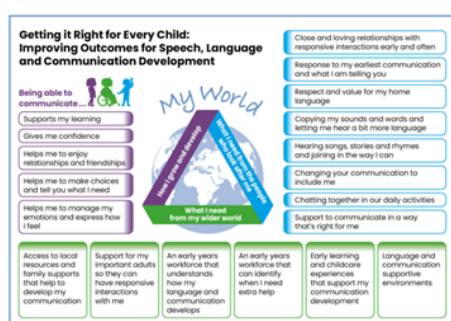
**WORKFORCE:** The NELC team has published:

- An ELC guide to [Language and Communication Supportive Environments](#), based on research evidence and best practice. It identifies key aspects of **interactions**, **experiences**, and **spaces** that support early SLC development for all babies and young children.
- A [SLC Knowledge and Skills Matrix](#), developed for the early years workforce from pre-birth to school entry. It outlines the key knowledge and skills required at every level of the system, to support positive SLC outcomes.



**NELC 2 will work within the Action Plan to support the workforce across health, education, social care and third sector.**

### ACTIVITY IN FOCUS



Introducing the **SLC My World Triangle** which compliments the evidence paper **'Early SLC: Factors Associated with Better and Poorer Outcomes'** and gives practitioners and leaders a familiar framework to consider prevention opportunities for SLC concerns.