



Motivator Board Instructions



What can I do to get a jigsaw piece?



Complete 3 timetabled activities.



Challenge myself



Why else might I get a jigsaw piece?



Working hard



Great work



How many pieces do I add?

1

1 piece



What happens when my jigsaw is full?



10 mins



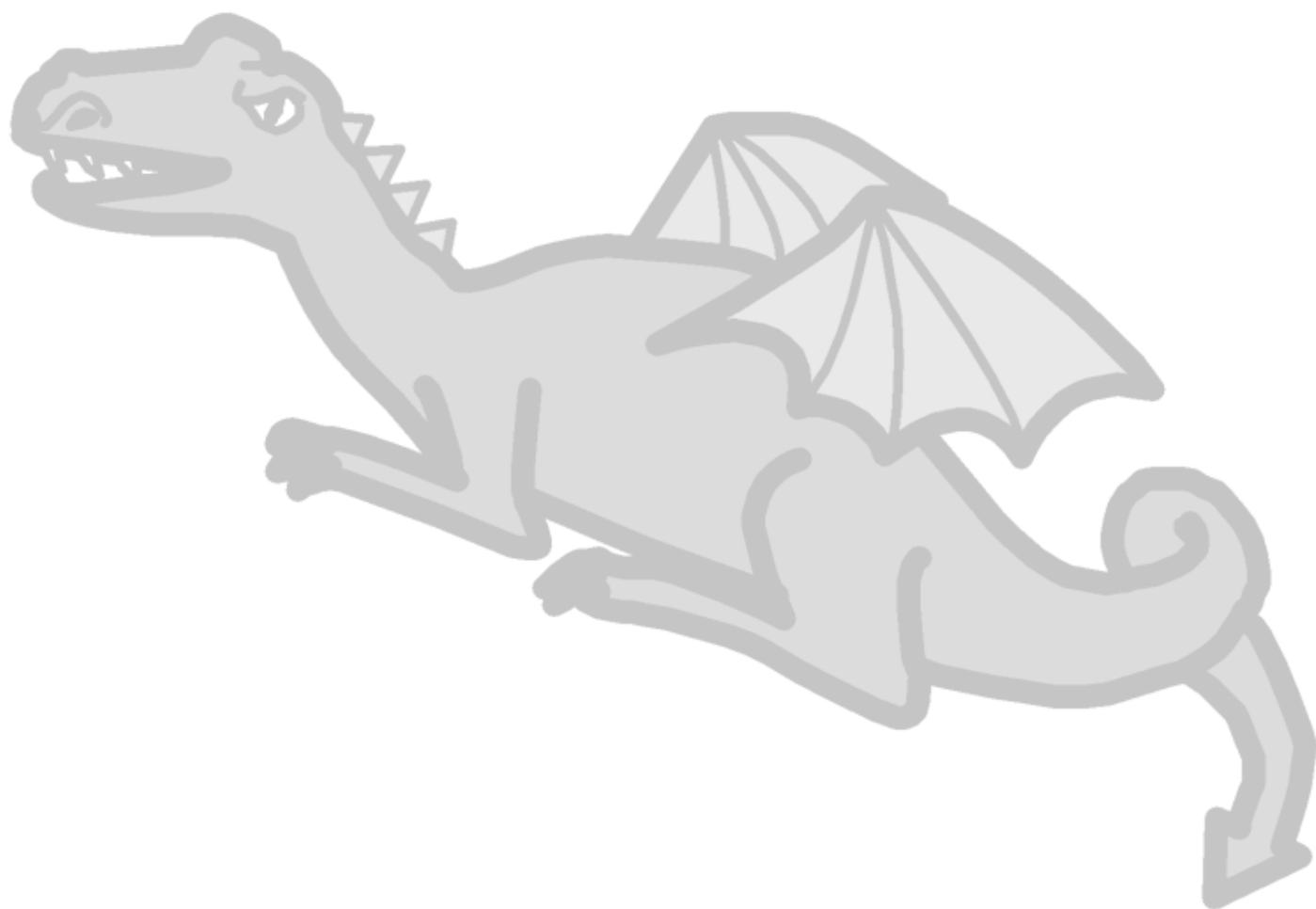
choice of activity



start again



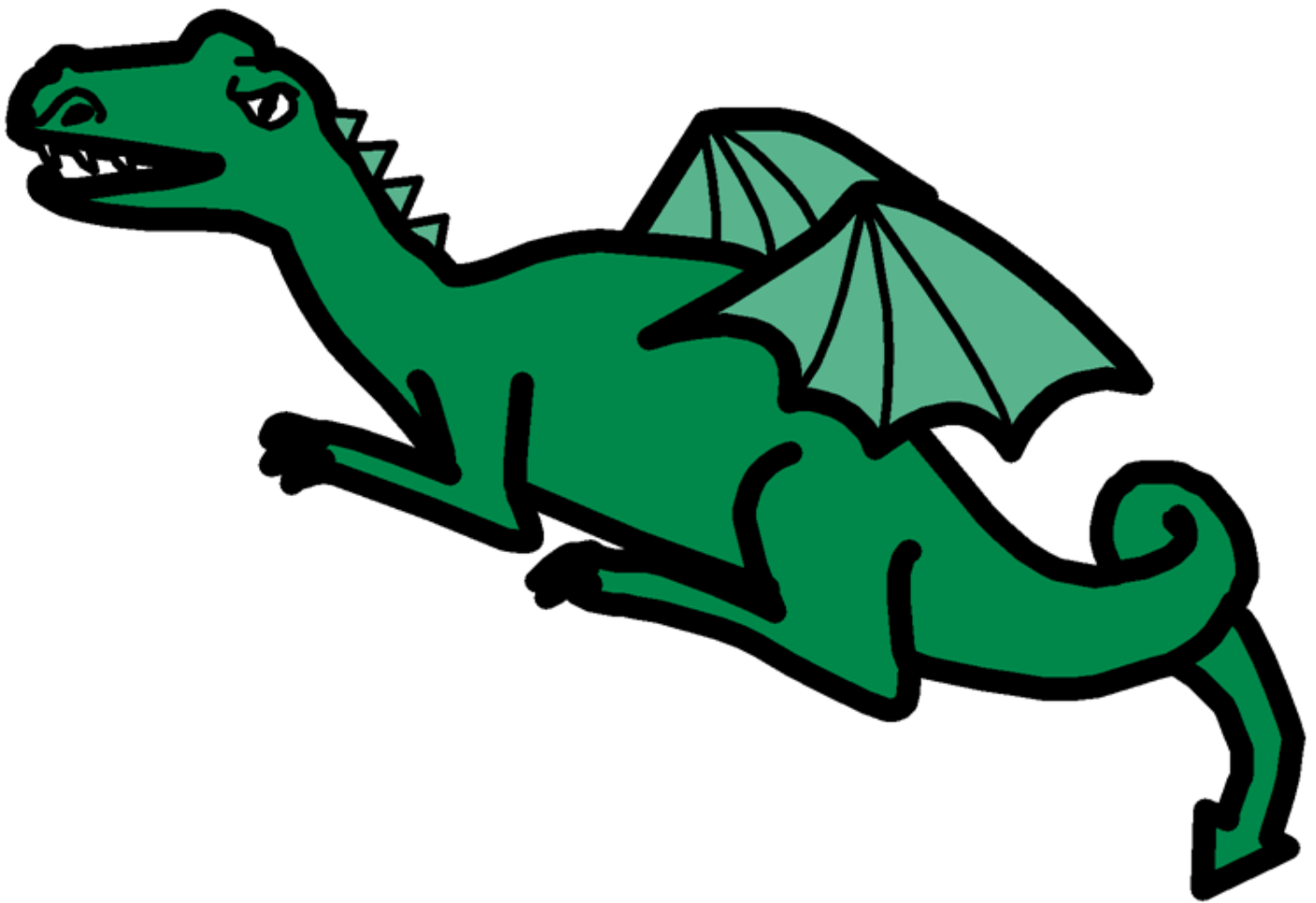
Once my puzzle is complete I can spent ten bonus minutes
doing my choice activity.



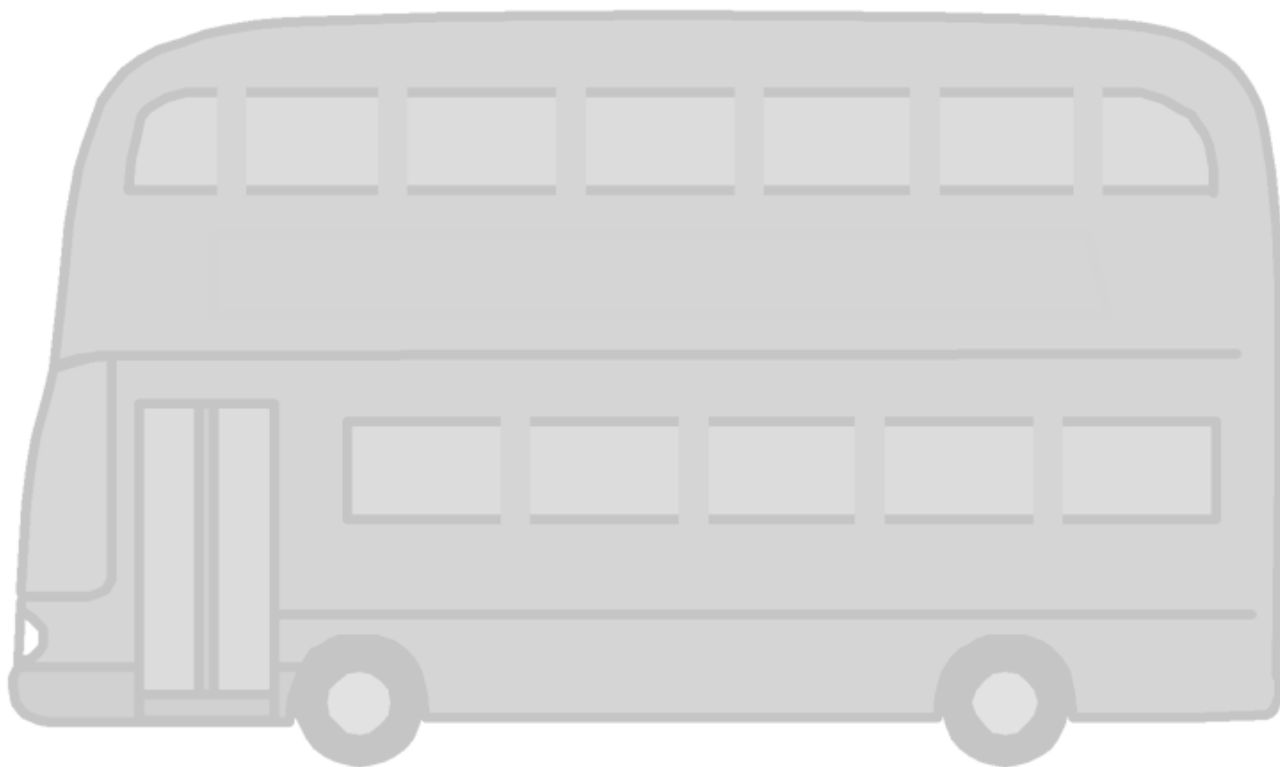
The staff will give me a part of my puzzle when I complete
work tasks.



Cut this into pieces. The number of pieces needs to be achievable. Add Velcro or blu tac to the black and white version



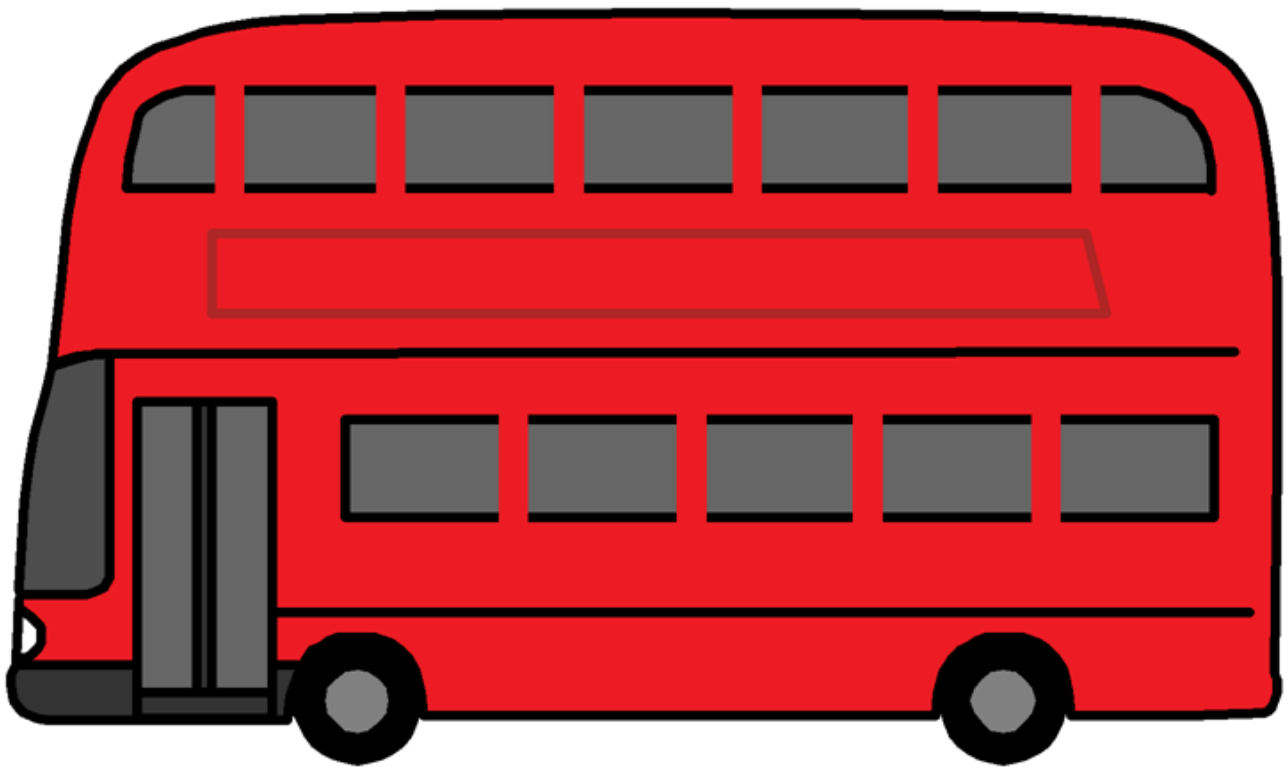
Once my puzzle is complete I can spent ten bonus minutes
doing my choice activity.



The staff will give me a part of my puzzle when I complete
work tasks.



Cut this into pieces. The number of pieces needs to be achievable. Add Velcro or blu tac to the black and white version



Once my puzzle is complete I can spent ten bonus minutes
doing my choice activity.



The staff will give me a part of my puzzle when I complete
work tasks.



Cut this into pieces. The number of pieces needs to be achievable. Add Velcro or blu tac to the black and white version



Once my puzzle is complete I can spent ten bonus minutes
doing my choice activity.



The staff will give me a part of my puzzle when I complete
work tasks.



Cut this into pieces. The number of pieces needs to be achievable. Add Velcro or blu tac to the black and white version



Once my puzzle is complete I can spent ten bonus minutes
doing my choice activity.



The staff will give me a part of my puzzle when I complete
work tasks.



Cut this into pieces. The number of pieces needs to be achievable. Add Velcro or blu tac to the black and white version

